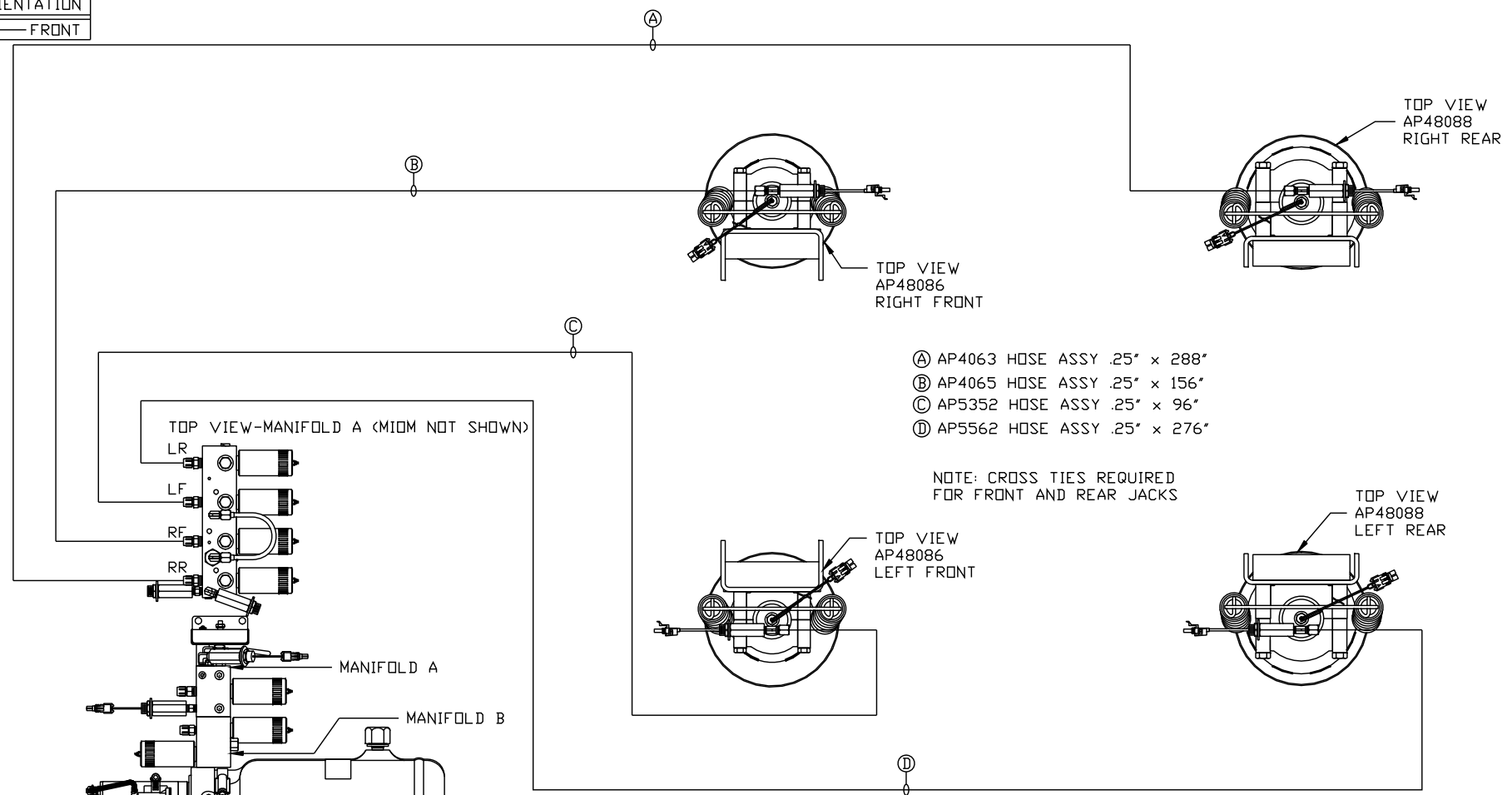
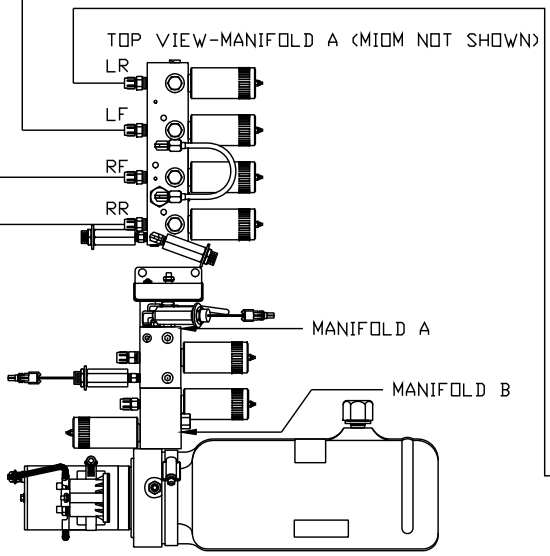


ORIENTATION  
← FRONT



- Ⓐ AP4063 HOSE ASSY .25" x 288"
- Ⓑ AP4065 HOSE ASSY .25" x 156"
- Ⓒ AP5352 HOSE ASSY .25" x 96"
- Ⓓ AP5562 HOSE ASSY .25" x 276"

NOTE: CROSS TIES REQUIRED FOR FRONT AND REAR JACKS



SIDE VIEW PUMP/MANIFOLD-AP47686

LOCATION AND ORIENTATION OF PUMP/MANIFOLD ASSEMBLY WILL DIFFER DEPENDING UPON O.E.M.

NOTE: INSTALLATION MUST CONFORM TO GOOD SHOP PRACTICES, SAE STANDARDS, RVIA STANDARDS, AND OTHER APPLICABLE STANDARDS.

SYNC KIT: AP53871
PUMP KIT: AP47685
LEVELING SYSTEM: AP48123

NO.	DATE	REVISION

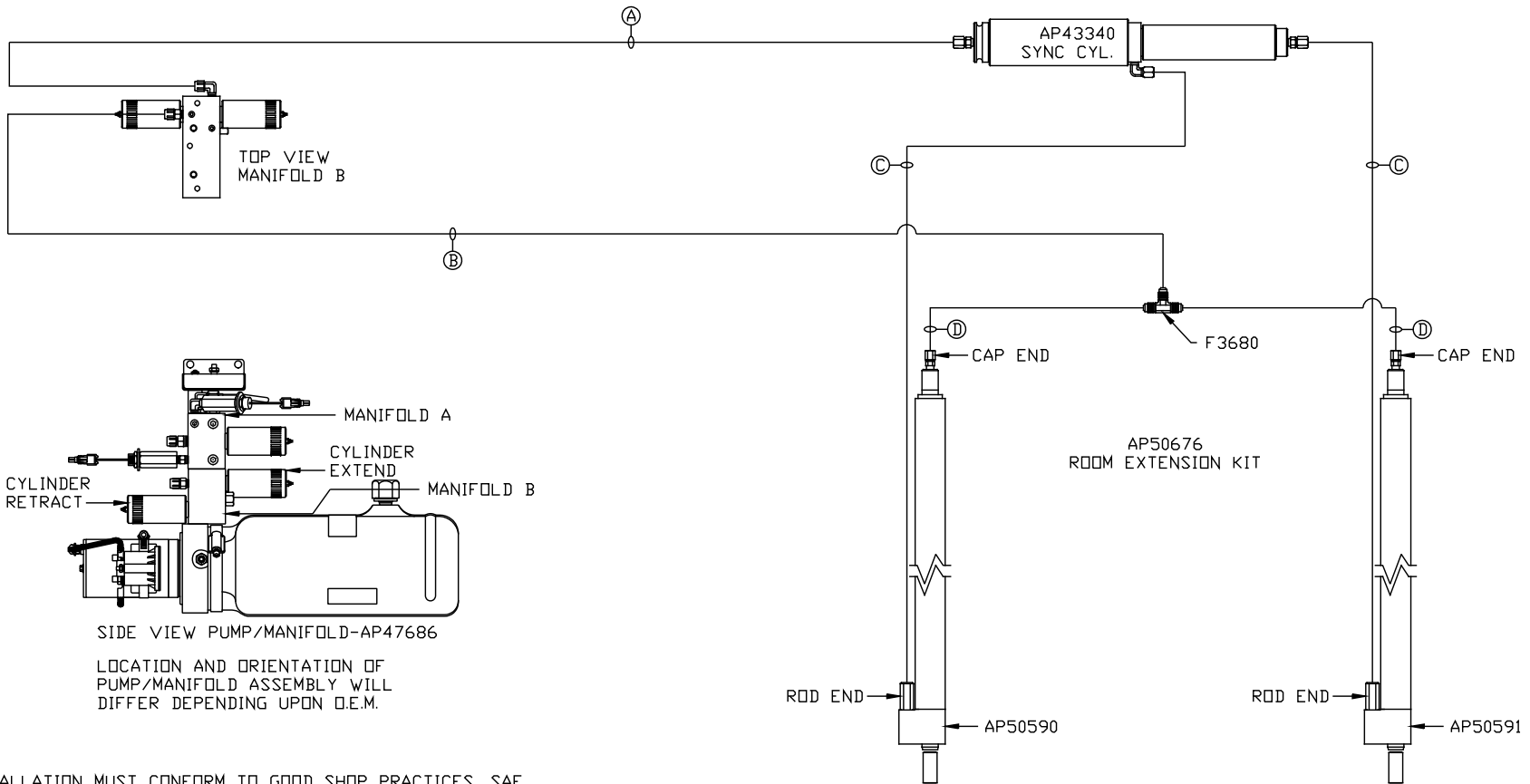
THE INFORMATION DISCLOSED ON THIS DRAWING IS CONFIDENTIAL AND MUST NOT BE DISCLOSED OR USED IN ANY MANNER WHICH WILL BE DETRIMENTAL TO THE HWH CORPORATION

<b>HWH</b>			I-80 EXIT 267 SOUTH RT 1 MOSCOW, IOWA 52760		
SCALE 1:6	DATE 10JUL14	DRAWN BY .			
<b>HYD CONN DIAGRAM</b>					
<b>TIFFIN</b>				DRAWING NUMBER MP70800 A/B	

ORIENTATION

← FRONT

- Ⓐ AP4159 HOSE ASSY .25" x 72"  
ROD END - ALWAYS PRESSURIZED
- Ⓑ AP5352 HOSE ASSY .25" x 96"  
CAP END
- Ⓒ AP49517 HOSE ASSY 03 x 180"  
ROD END - ALWAYS PRESSURIZED  
HOSES MUST MAINTAIN EQUAL  
LENGTH AND DIAMETER
- Ⓓ AP10913 HOSE ASSY .25" x 162"  
CAP END - HOSES MUST MAINTAIN  
EQUAL LENGTH AND DIAMETER



NOTE: INSTALLATION MUST CONFORM TO GOOD SHOP PRACTICES, SAE STANDARDS, RVIA STANDARDS, AND OTHER APPLICABLE STANDARDS.

MP70800 B/B  
10JUL14