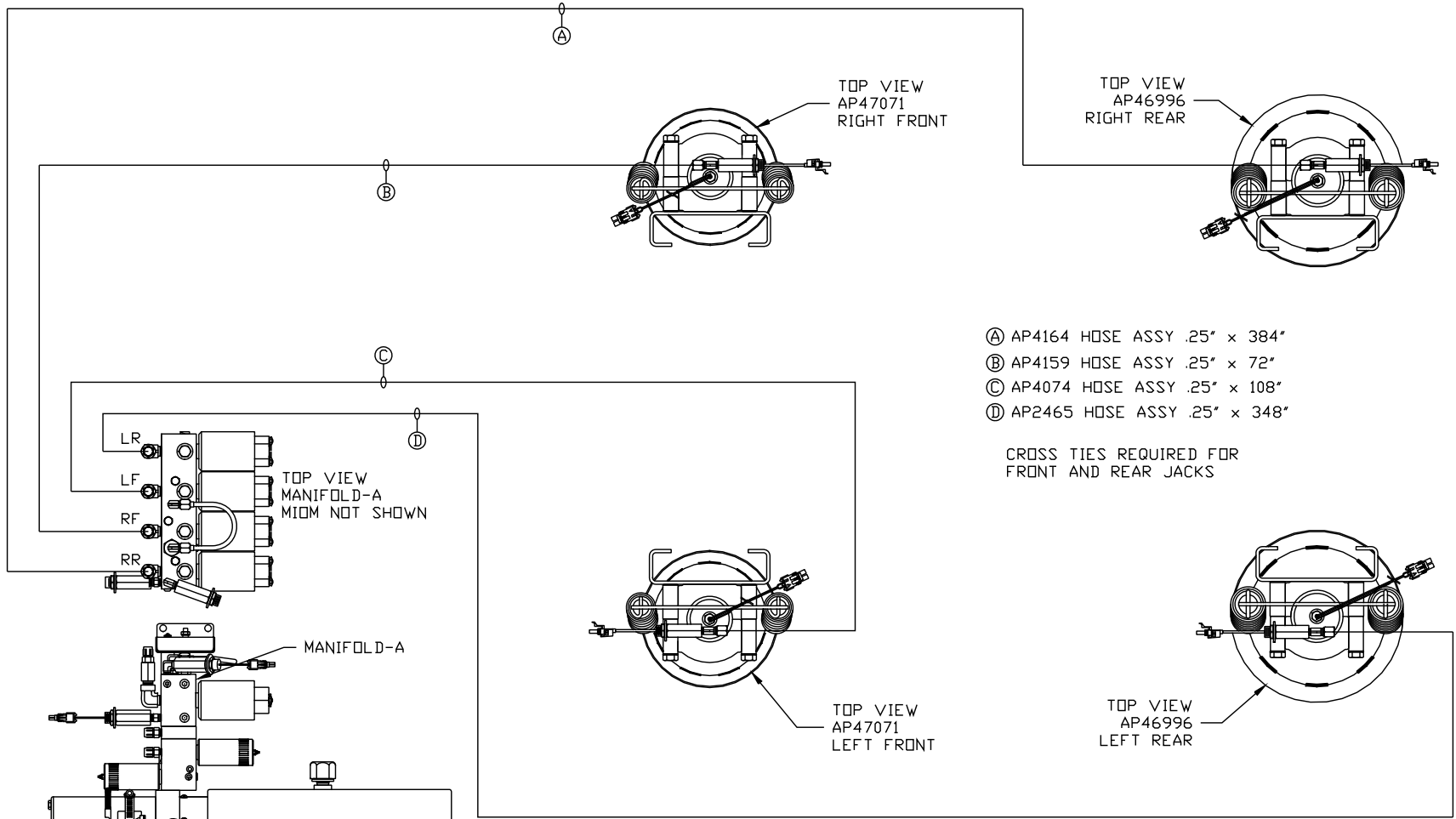


ORIENTATION  
← FRONT



- Ⓐ AP4164 HOSE ASSY .25" x 384"
- Ⓑ AP4159 HOSE ASSY .25" x 72"
- Ⓒ AP4074 HOSE ASSY .25" x 108"
- Ⓓ AP2465 HOSE ASSY .25" x 348"

CROSS TIES REQUIRED FOR FRONT AND REAR JACKS

SIDE VIEW PUMP/MANIFOLD-AP54805

LOCATION AND ORIENTATION OF PUMP/MANIFOLD ASSEMBLY WILL DIFFER DEPENDING UPON O.E.M.

NOTE: INSTALLATION MUST CONFORM TO GOOD SHOP PRACTICES, SAE STANDARDS, RVIA STANDARDS, AND OTHER APPLICABLE STANDARDS.

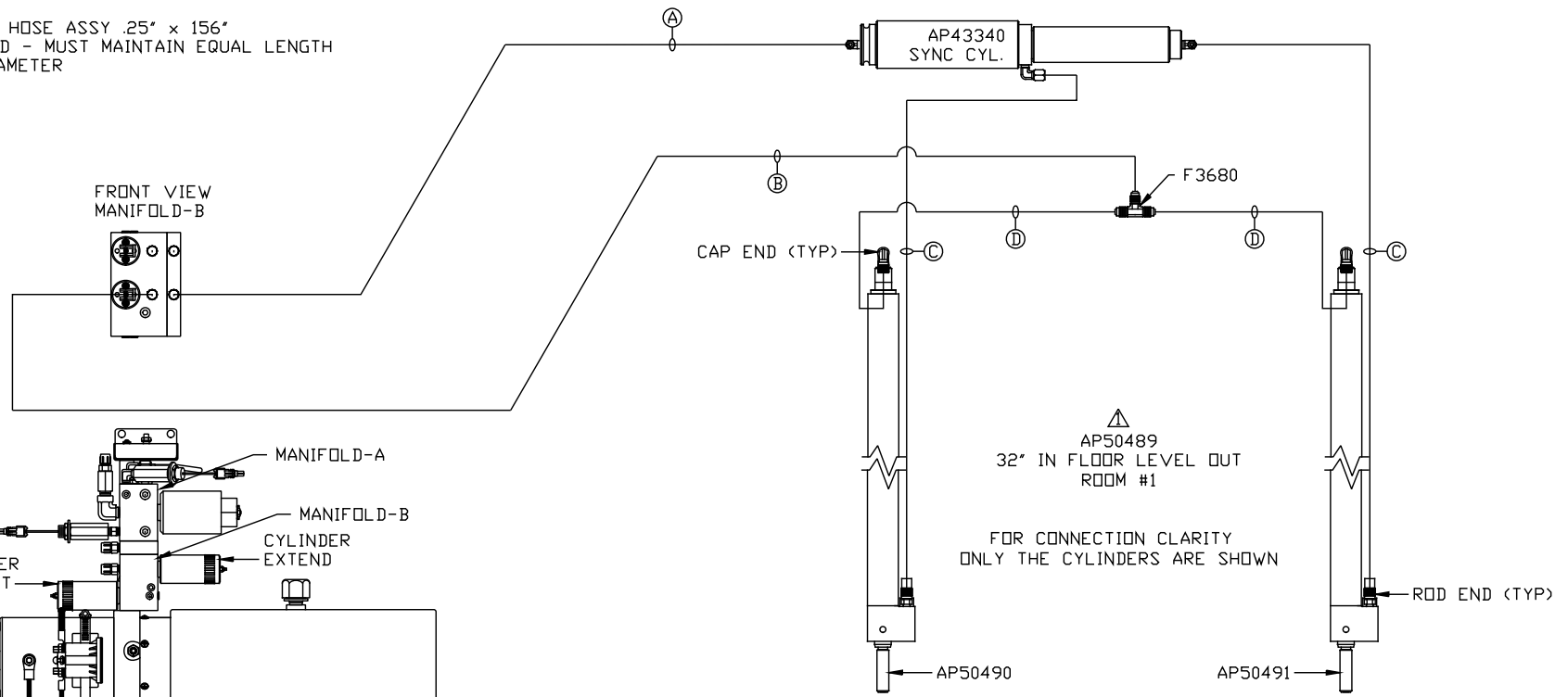
NO.	DATE	REVISION
16FEB16		UPDATED HOSE
24NOV15		WAS AP50912
08MAY15		CORRECTED PART #
SYNC KIT: AP53363		
PUMP KIT: AP50865	THE INFORMATION DISCLOSED ON THIS DRAWING IS CONFIDENTIAL AND MUST NOT BE DISCLOSED OR USED IN ANY MANNER WHICH WILL BE DETRIMENTAL TO THE HWH CORPORATION	
JACK KIT: AP50420		

<b>HWH</b>			I-80 EXIT 267 SOUTH RT 1 MOSCOW, IOWA 52760		
SCALE 1:6	DATE 10JUL14	DRAWN BY .			
HYD CONN DIAGRAM					
TIFFIN				DRAWING NUMBER MP70801 A/C	

ORIENTATION

← FRONT

- Ⓐ AP4073 HOSE ASSY .25" x 60"  
ROD END - ALWAYS PRESSURIZED
- Ⓑ AP4159 HOSE ASSY .25" x 72"  
CAP END
- Ⓒ AP49246 HOSE ASSY 03" x 156"  
ROD END - ALWAYS PRESSURIZED - MUST  
MAINTAIN EQUAL LENGTH AND DIAMETER
- Ⓓ AP4065 HOSE ASSY .25" x 156"  
CAP END - MUST MAINTAIN EQUAL LENGTH  
AND DIAMETER



SIDE VIEW PUMP/MANIFOLD-AP54805

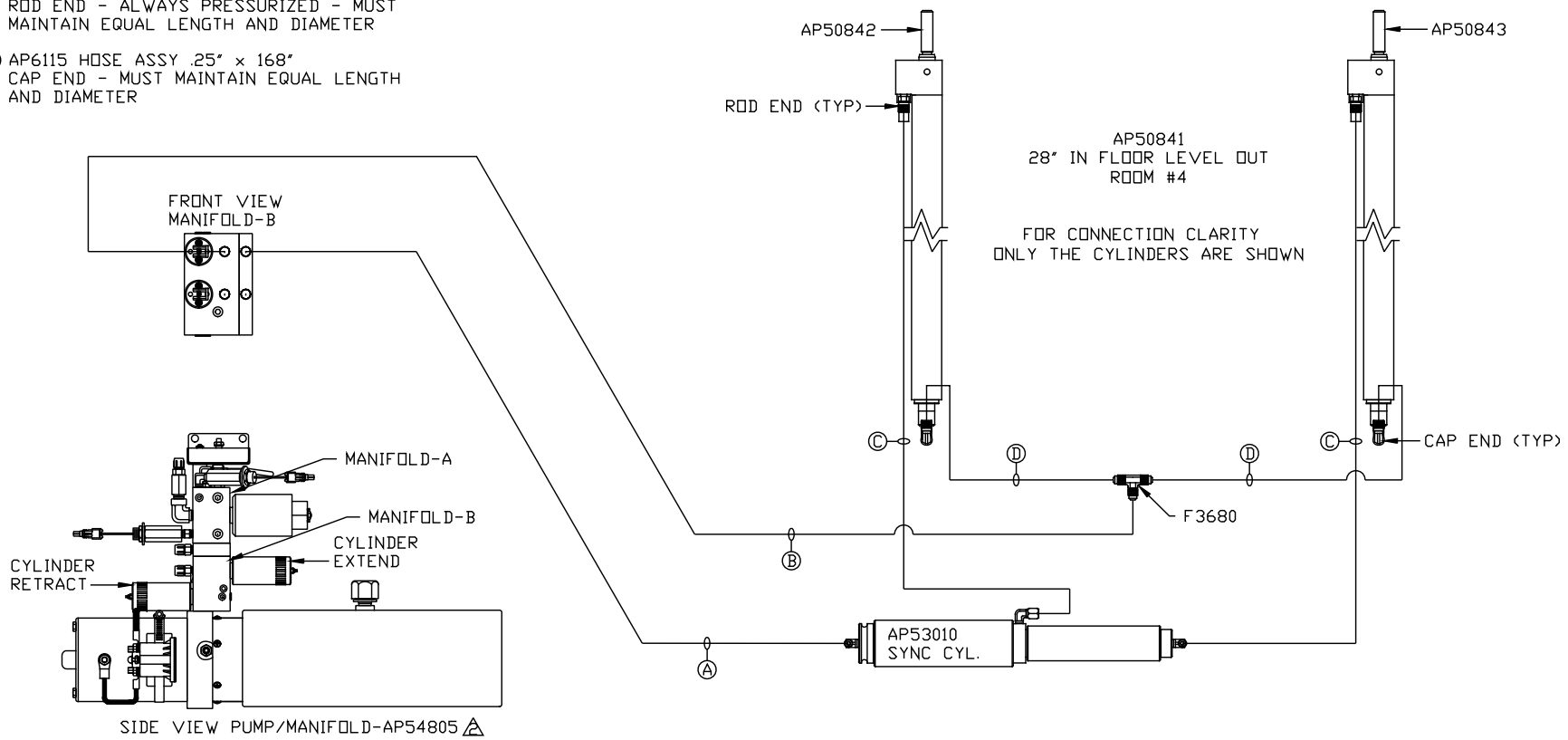
LOCATION AND ORIENTATION OF  
PUMP/MANIFOLD ASSEMBLY WILL  
DIFFER DEPENDING UPON O.E.M.

NOTE: INSTALLATION MUST CONFORM TO GOOD SHOP PRACTICES, SAE  
STANDARDS, RVIA STANDARDS, AND OTHER APPLICABLE STANDARDS.

ORIENTATION

← FRONT

- ⚠ A AP5351 HOSE ASSY .25" x 66"  
WAS AP4664 HOSE ASSY .25" x 64"  
ROD END - ALWAYS PRESSURIZED
- B AP5352 HOSE ASSY .25" x 96"  
CAP END
- C AP50261 HOSE ASSY 03" x 168"  
ROD END - ALWAYS PRESSURIZED - MUST  
MAINTAIN EQUAL LENGTH AND DIAMETER
- D AP6115 HOSE ASSY .25" x 168"  
CAP END - MUST MAINTAIN EQUAL LENGTH  
AND DIAMETER



LOCATION AND ORIENTATION OF  
PUMP/MANIFOLD ASSEMBLY WILL  
DIFFER DEPENDING UPON O.E.M.

NOTE: INSTALLATION MUST CONFORM TO GOOD SHOP PRACTICES, SAE  
STANDARDS, RVIA STANDARDS, AND OTHER APPLICABLE STANDARDS.