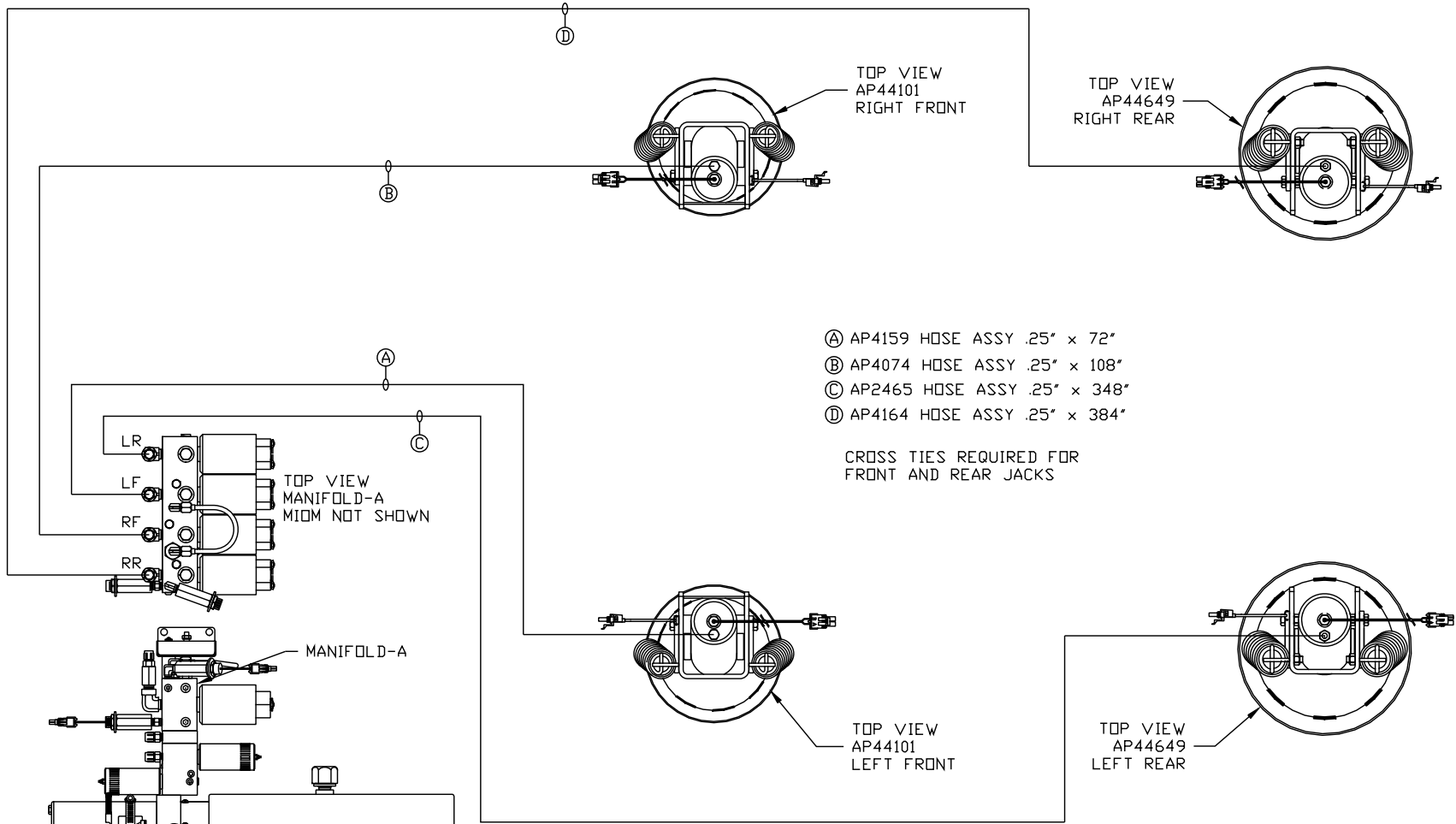
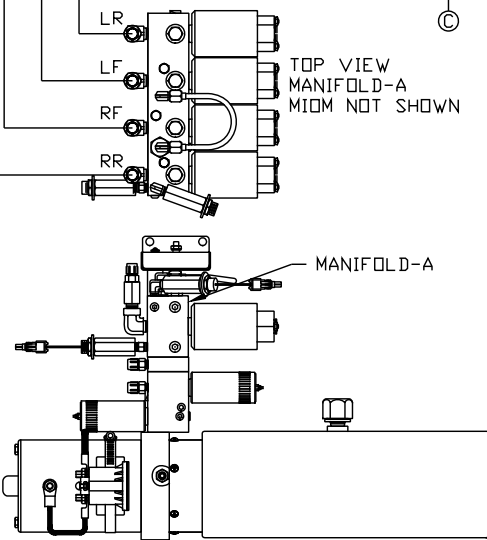


ORIENTATION
← FRONT



- Ⓐ AP4159 HOSE ASSY .25" x 72"
- Ⓑ AP4074 HOSE ASSY .25" x 108"
- Ⓒ AP2465 HOSE ASSY .25" x 348"
- Ⓓ AP4164 HOSE ASSY .25" x 384"

CROSS TIES REQUIRED FOR FRONT AND REAR JACKS



SIDE VIEW PUMP/MANIFOLD-AP54805 Δ
LOCATION AND ORIENTATION OF PUMP/MANIFOLD ASSEMBLY WILL DIFFER DEPENDING UPON O.E.M.

NOTE: INSTALLATION MUST CONFORM TO GOOD SHOP PRACTICES, SAE STANDARDS, RVIA STANDARDS, AND OTHER APPLICABLE STANDARDS.

NO.	DATE	REVISION
Δ	18FEB16	UPDATED HOSES
Δ	24NOV15	WAS AP48130
NO.	DATE	REVISION
SYNC KIT: AP53359		
PUMP KIT: AP48122		
JACK KIT: AP48362		
THE INFORMATION DISCLOSED ON THIS DRAWING IS CONFIDENTIAL AND MUST NOT BE DISCLOSED OR USED IN ANY MANNER WHICH WILL BE DETRIMENTAL TO THE HWH CORPORATION		

HWH I-80 EXIT 267 SOUTH
RT 1 MOSCOW, IOWA 52760

SCALE 1:6 DATE 15JUL14 DRAWN BY .

HYD CONN DIAGRAM

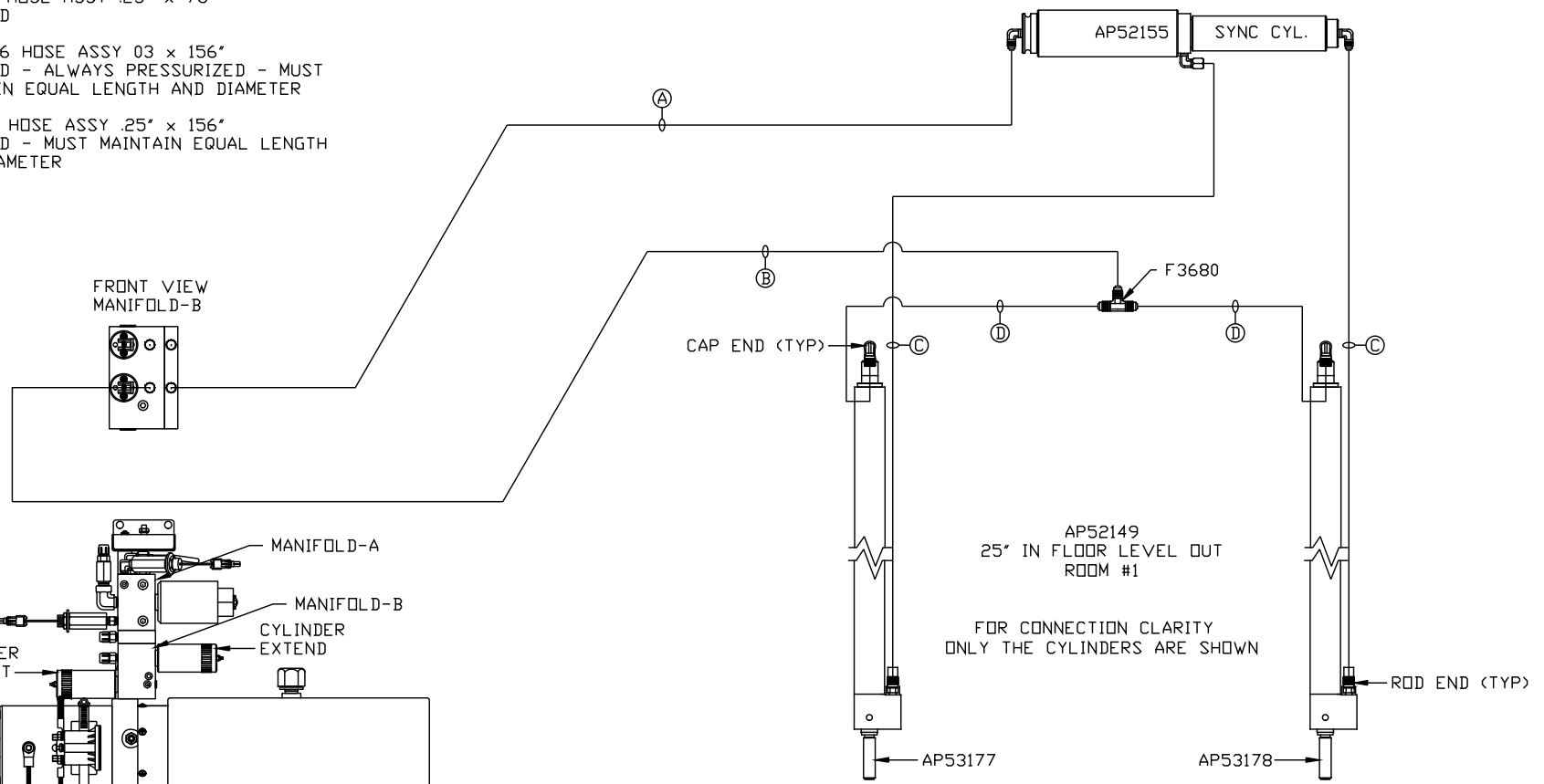
TIFFIN

DRAWING NUMBER
MP70805 A/C

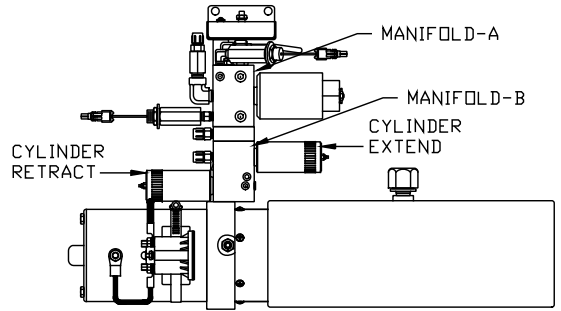
ORIENTATION

← FRONT

- Ⓐ AP4159 HOSE ASSY .25" x 72"
ROD END - ALWAYS PRESSURIZED
- Ⓑ AP5215 HOSE ASSY .25" x 78"
CAP END
- Ⓒ AP49246 HOSE ASSY 03" x 156"
ROD END - ALWAYS PRESSURIZED - MUST
MAINTAIN EQUAL LENGTH AND DIAMETER
- Ⓓ AP4065 HOSE ASSY .25" x 156"
CAP END - MUST MAINTAIN EQUAL LENGTH
AND DIAMETER



FRONT VIEW
MANIFOLD-B



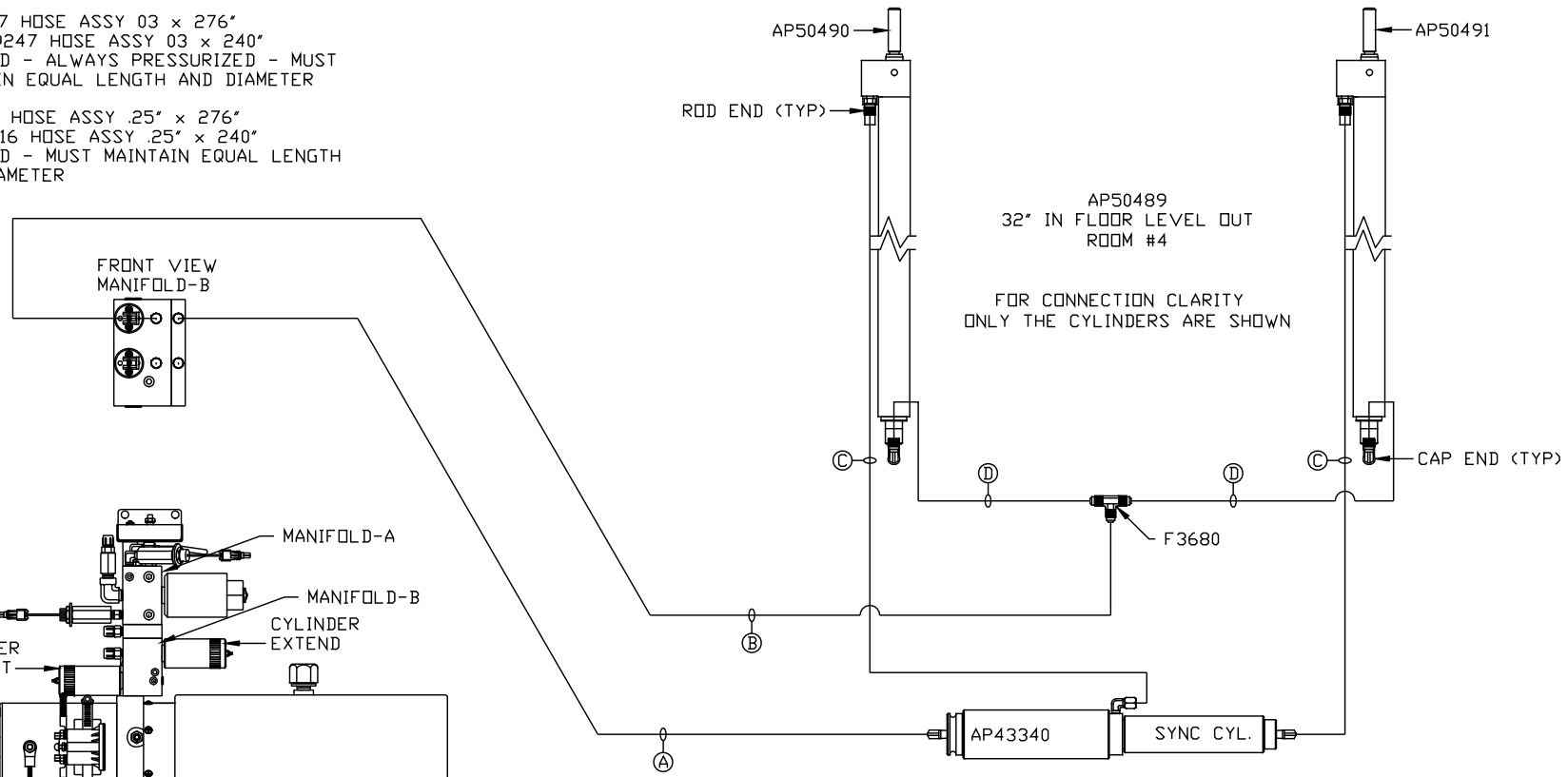
SIDE VIEW PUMP/MANIFOLD-AP54805

LOCATION AND ORIENTATION OF
PUMP/MANIFOLD ASSEMBLY WILL
DIFFER DEPENDING UPON O.E.M.

NOTE: INSTALLATION MUST CONFORM TO GOOD SHOP PRACTICES, SAE
STANDARDS, RVIA STANDARDS, AND OTHER APPLICABLE STANDARDS.

ORIENTATION
 ← FRONT

- Ⓐ AP1412 HOSE ASSY .25" x 84"
ROD END - ALWAYS PRESSURIZED
- Ⓑ AP5352 HOSE ASSY .25" x 96"
CAP END
- Ⓒ AP53067 HOSE ASSY 03 x 276"
WAS AP49247 HOSE ASSY 03 x 240"
ROD END - ALWAYS PRESSURIZED - MUST
MAINTAIN EQUAL LENGTH AND DIAMETER
- Ⓓ AP5562 HOSE ASSY .25" x 276"
WAS AP6116 HOSE ASSY .25" x 240"
CAP END - MUST MAINTAIN EQUAL LENGTH
AND DIAMETER



SIDE VIEW PUMP/MANIFOLD-AP54805 ⚠
 LOCATION AND ORIENTATION OF
 PUMP/MANIFOLD ASSEMBLY WILL
 DIFFER DEPENDING UPON O.E.M.

NOTE: INSTALLATION MUST CONFORM TO GOOD SHOP PRACTICES, SAE
 STANDARDS, RVIA STANDARDS, AND OTHER APPLICABLE STANDARDS.

MP70805 C/C
 18FEB16