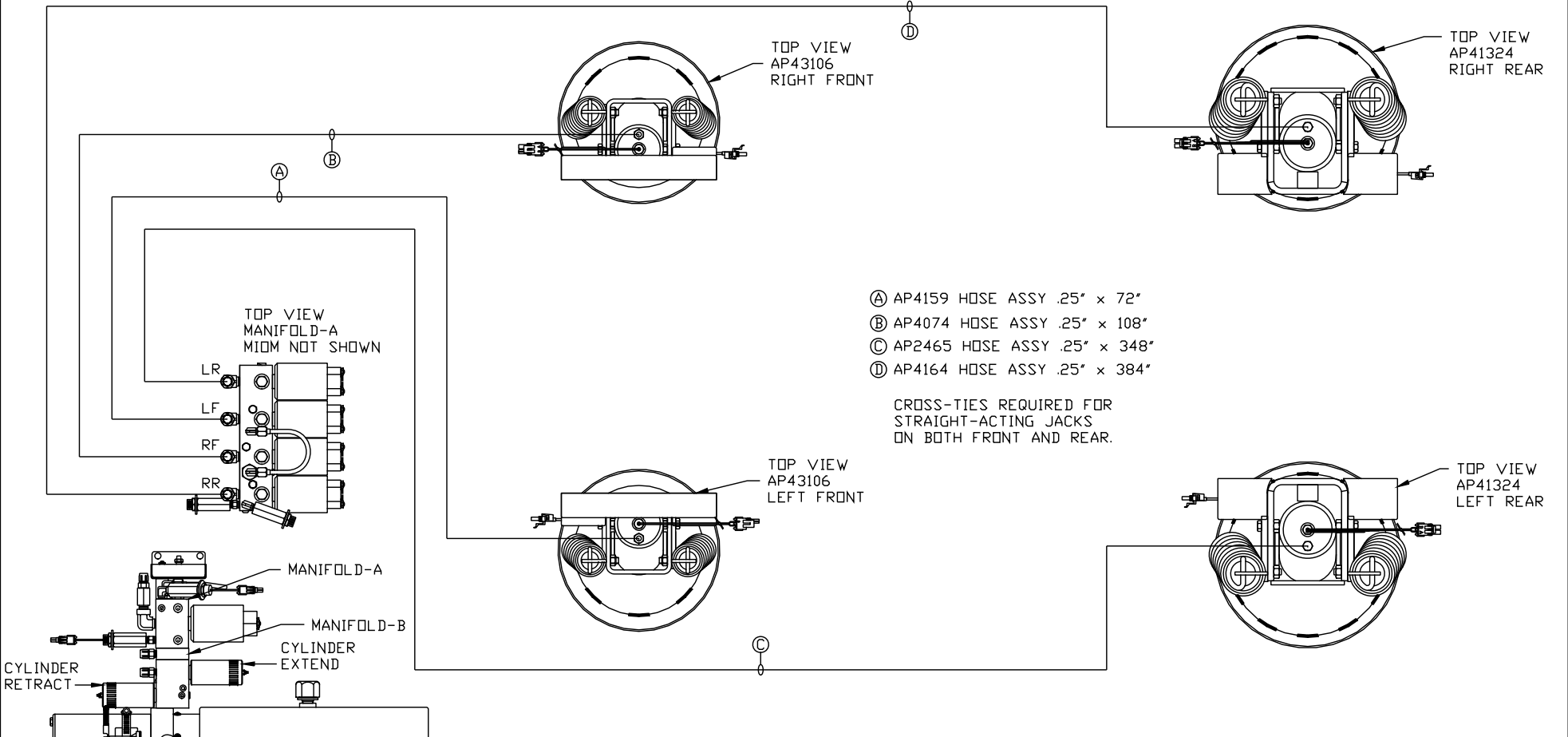
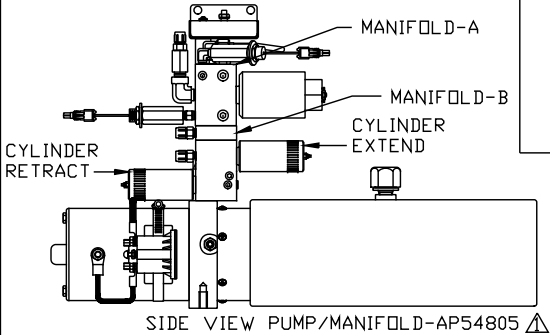


ORIENTATION  
← FRONT



- Ⓐ AP4159 HOSE ASSY .25" x 72"
- Ⓑ AP4074 HOSE ASSY .25" x 108"
- Ⓒ AP2465 HOSE ASSY .25" x 348"
- Ⓓ AP4164 HOSE ASSY .25" x 384"

CROSS-TIES REQUIRED FOR STRAIGHT-ACTING JACKS ON BOTH FRONT AND REAR.



SIDE VIEW PUMP/MANIFOLD-AP54805 ⚠

LOCATION AND ORIENTATION OF PUMP/MANIFOLD ASSEMBLY WILL DIFFER DEPENDING UPON O.E.M.

NOTE: INSTALLATION MUST CONFORM TO GOOD SHOP PRACTICES, SAE STANDARDS, RVIA STANDARDS, AND OTHER APPLICABLE STANDARDS.

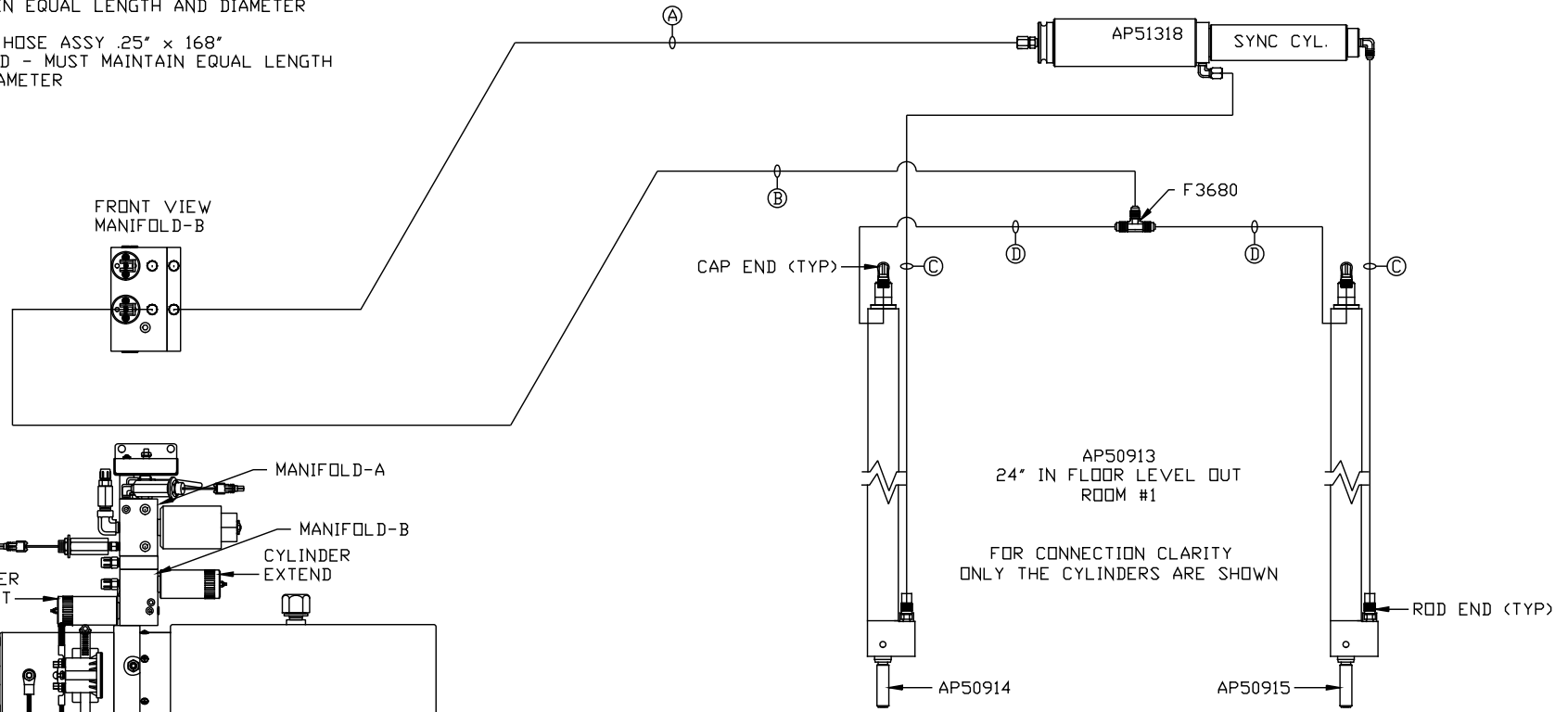
NO.	DATE	REVISION
⚠	18FEB16	UPDATED HOSES
⚠	24NOV15	WAS AP48130
SYNC KIT: AP53371 PUMP KIT: AP48122 JACK KIT: AP50795		
THE INFORMATION DISCLOSED ON THIS DRAWING IS CONFIDENTIAL AND MUST NOT BE DISCLOSED OR USED IN ANY MANNER WHICH WILL BE DETRIMENTAL TO THE HWH CORPORATION		

<b>HWH</b> I-80 EXIT 267 SOUTH RT 1 MOSCOW, IOWA 52760		
SCALE 1:6	DATE 15JUL14	DRAWN BY .
<b>HYD CONN DIAGRAM</b>		
<b>TIFFIN</b>		DRAWING NUMBER <b>MP70807 A/C</b>

ORIENTATION

← FRONT

- Ⓐ AP4073 HOSE ASSY .25" x 60"  
ROD END - ALWAYS PRESSURIZED
- Ⓑ AP5352 HOSE ASSY .25" x 96"  
CAP END
- Ⓒ AP49517 HOSE ASSY 03" x 180"  
ROD END - ALWAYS PRESSURIZED - MUST  
MAINTAIN EQUAL LENGTH AND DIAMETER
- Ⓓ AP6115 HOSE ASSY .25" x 168"  
CAP END - MUST MAINTAIN EQUAL LENGTH  
AND DIAMETER

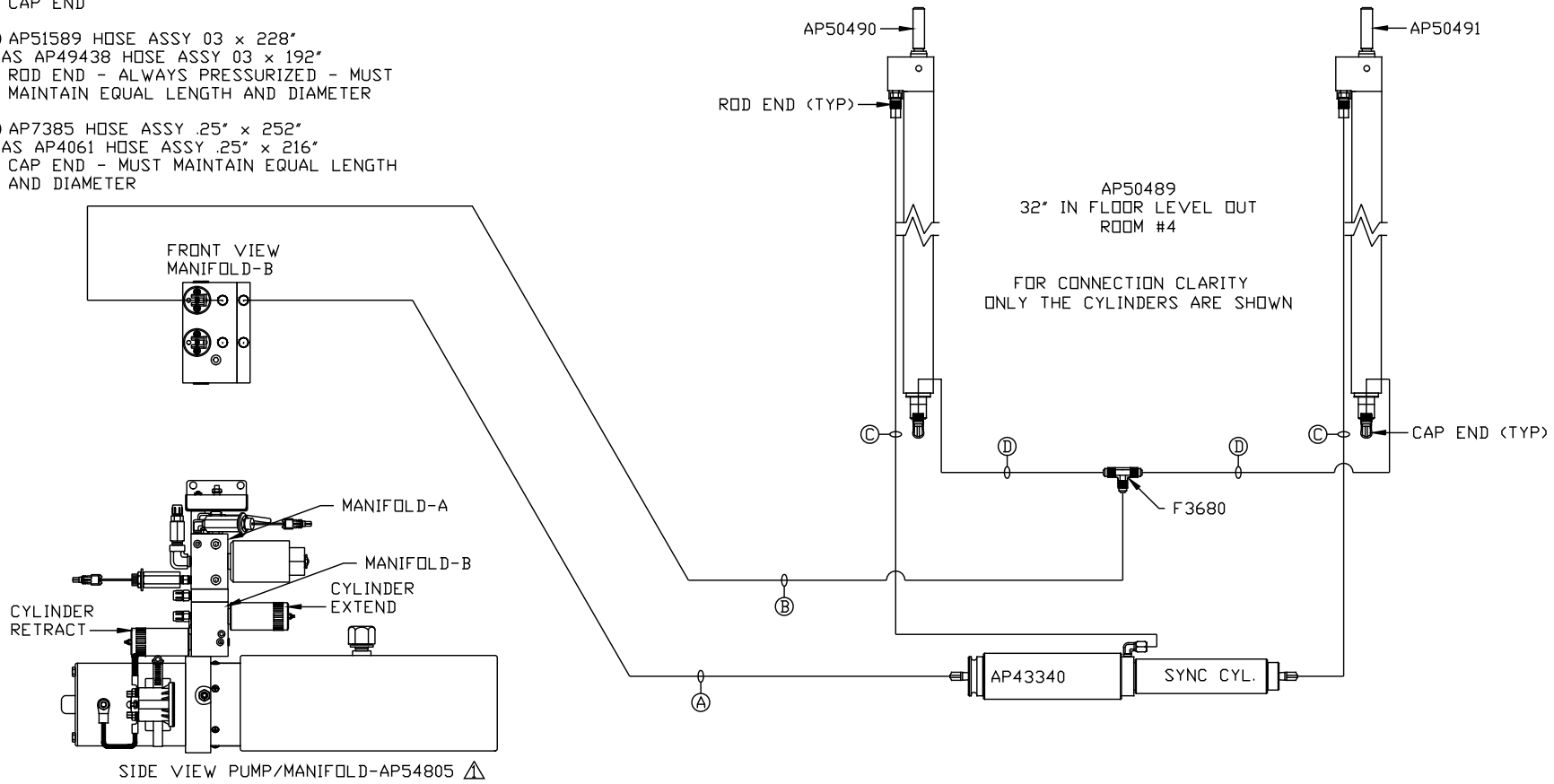


SIDE VIEW PUMP/MANIFOLD-AP54805 ⚠  
LOCATION AND ORIENTATION OF  
PUMP/MANIFOLD ASSEMBLY WILL  
DIFFER DEPENDING UPON O.E.M.

NOTE: INSTALLATION MUST CONFORM TO GOOD SHOP PRACTICES, SAE  
STANDARDS, RVIA STANDARDS, AND OTHER APPLICABLE STANDARDS.

ORIENTATION  
 ← FRONT

- ⚠ A AP4827 HOSE ASSY .25" x 144"  
 WAS AP4159 HOSE ASSY .25" x 72"  
 ROD END - ALWAYS PRESSURIZED
- ⓑ AP4074 HOSE ASSY .25" x 108"  
 CAP END
- Ⓒ AP51589 HOSE ASSY 03 x 228"  
 WAS AP49438 HOSE ASSY 03 x 192"  
 ROD END - ALWAYS PRESSURIZED - MUST  
 MAINTAIN EQUAL LENGTH AND DIAMETER
- Ⓓ AP7385 HOSE ASSY .25" x 252"  
 WAS AP4061 HOSE ASSY .25" x 216"  
 CAP END - MUST MAINTAIN EQUAL LENGTH  
 AND DIAMETER



SIDE VIEW PUMP/MANIFOLD-AP54805 ⚠

LOCATION AND ORIENTATION OF  
 PUMP/MANIFOLD ASSEMBLY WILL  
 DIFFER DEPENDING UPON O.E.M.

NOTE: INSTALLATION MUST CONFORM TO GOOD SHOP PRACTICES, SAE  
 STANDARDS, RVIA STANDARDS, AND OTHER APPLICABLE STANDARDS.

MP70807 C/C  
 18FEB16