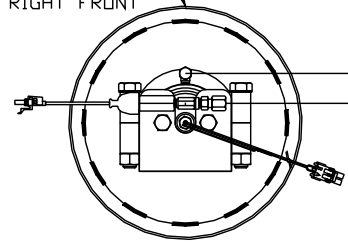


ORIENTATION

← FRONT

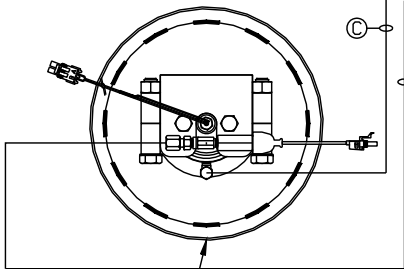
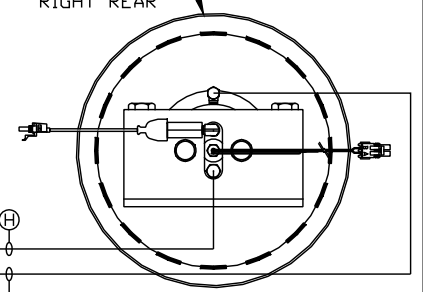
TOP VIEW  
AP45129  
RIGHT FRONT



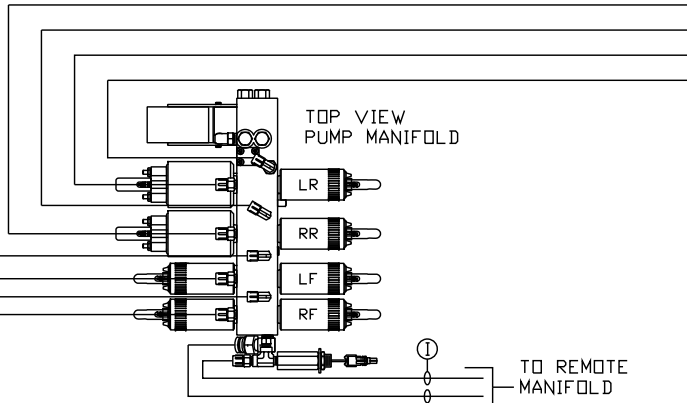
- Ⓐ AP6601 HOSE ASSY 04 X 198" ROD END RIGHT FRONT JACK
- Ⓑ AP43436 HOSE ASSY .25/05 X 180" CAP END RIGHT FRONT JACK
- Ⓒ AP5965 HOSE ASSY 04 X 180" ROD END LEFT FRONT JACK
- Ⓓ AP45367 HOSE ASSY .25/05 X 168" CAP END LEFT FRONT JACK
- Ⓔ AP4061 HOSE ASSY 04 X 216" ROD END LEFT REAR JACK

- ⓕ AP45368 HOSE ASSY .25/05 X 216" CAP END LEFT REAR JACK
- ⓖ AP6116 HOSE ASSY 04 X 240" ROD END RIGHT REAR JACK
- ⓗ AP45368 HOSE ASSY .25/05 X 216" CAP END RIGHT REAR JACK
- ① HOSE ASSY 04 PRESSURE
- ② RETURN LINE .5" OD RETURN

TOP VIEW  
AP43838  
RIGHT REAR



TOP VIEW  
AP45129  
LEFT FRONT



CYLINDER RETRACT  
CYLINDER EXTEND

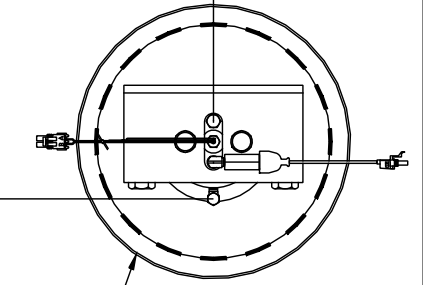
SIDE VIEW PUMP/MANIFOLD-AP48090

LOCATION AND ORIENTATION OF PUMP/MANIFOLD ASSEMBLY WILL DIFFER DEPENDING UPON O.E.M.

ⓕ

Ⓔ

TOP VIEW  
AP43838  
LEFT REAR



NOTE: INSTALLATION MUST CONFORM TO GOOD SHOP PRACTICES, SAE STANDARDS, RVIA STANDARDS, AND OTHER APPLICABLE STANDARDS.

LEVELING SYSTEM: AP53143

△	16FEB16	WAS G & H
NO.	DATE	REVISION

THE INFORMATION DISCLOSED ON THIS DRAWING IS CONFIDENTIAL AND MUST NOT BE DISCLOSED OR USED IN ANY MANNER WHICH WILL BE DETRIMENTAL TO THE HWH CORPORATION

HWH 1-80 EXIT 267 SOUTH  
RT 1 MOSCOW, IOWA 52760

SCALE 1:6 DATE 21AUG14 DRAWN BY .

HYD CONN DIAGRAM

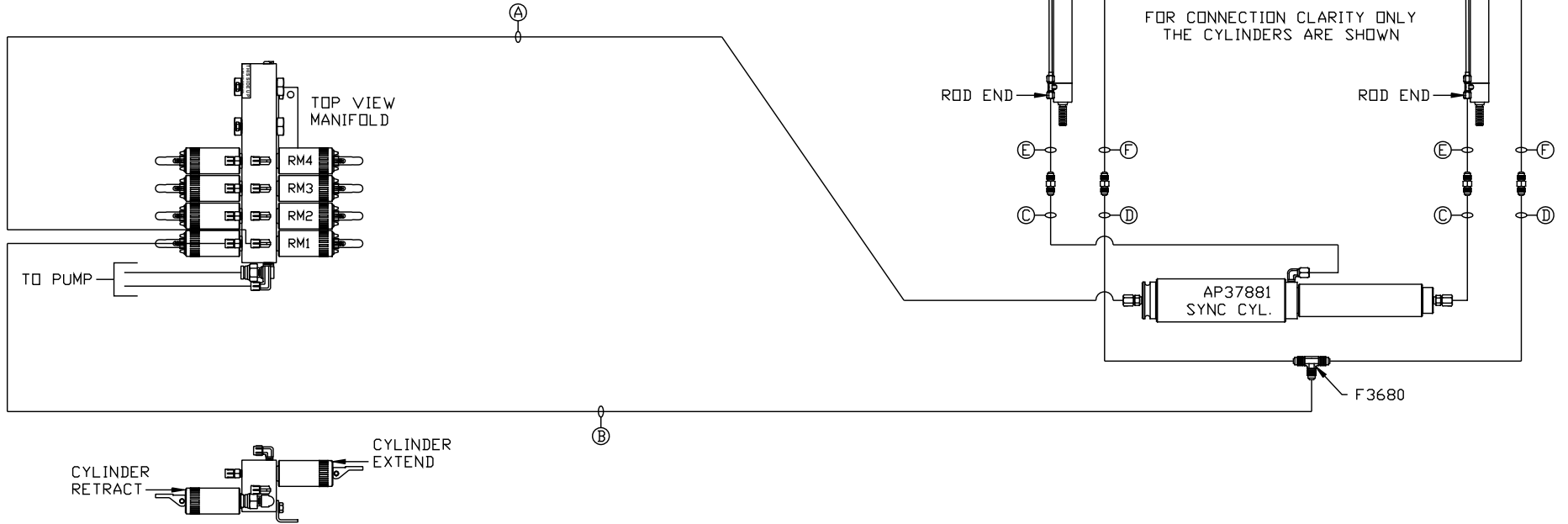
LPD TRAILERS

DRAWING NUMBER  
MP70821 A/E

NOTE: HOSES (E) AND (F) ARE INCLUDED WITH THE ROOM EXTENSION MECHANISM

- (A) HOSE ASSY 04  
ROD END - ALWAYS PRESSURIZED
- (B) HOSE ASSY 04  
CAP END
- (C) HOSE ASSY 03  
ROD END - ALWAYS PRESSURIZED  
HOSES MUST MAINTAIN EQUAL LENGTH AND DIAMETER
- (D) HOSE ASSY 04  
CAP END - HOSES MUST MAINTAIN EQUAL LENGTH AND DIAMETER

- (E) AP24632 HOSE ASSY HWH02HP x 48"  
ROD END - ALWAYS PRESSURIZED  
HOSES MUST MAINTAIN EQUAL LENGTH AND DIAMETER
- (F) AP24818 HOSE ASSY HWH02HP x 86"  
CAP END - MUST MAINTAIN EQUAL LENGTH AND DIAMETER



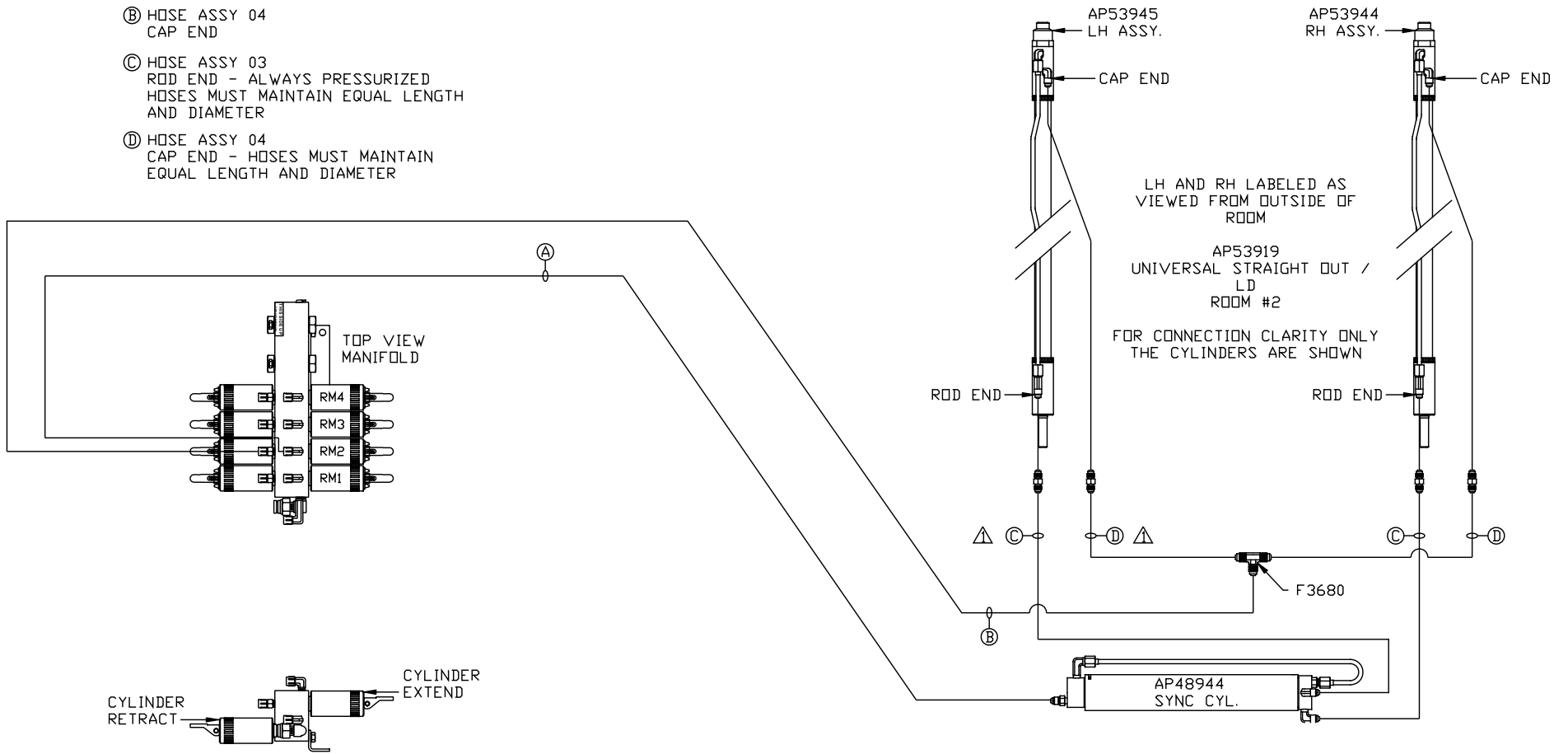
SIDE VIEW OF MANIFOLD-AP46854

LOCATION AND ORIENTATION OF PUMP/MANIFOLD ASSEMBLY WILL DIFFER DEPENDING UPON O.E.M.

NOTE: INSTALLATION MUST CONFORM TO GOOD SHOP PRACTICES, SAE STANDARDS, RVIA STANDARDS, AND OTHER APPLICABLE STANDARDS.

MP70821 B/E  
21AUG14

- Ⓐ HOSE ASSY 04  
ROD END - ALWAYS PRESSURIZED
- Ⓑ HOSE ASSY 04  
CAP END
- Ⓒ HOSE ASSY 03  
ROD END - ALWAYS PRESSURIZED  
HOSES MUST MAINTAIN EQUAL LENGTH  
AND DIAMETER
- Ⓓ HOSE ASSY 04  
CAP END - HOSES MUST MAINTAIN  
EQUAL LENGTH AND DIAMETER



SIDE VIEW OF MANIFOLD-AP46854

LOCATION AND ORIENTATION OF PUMP/MANIFOLD ASSEMBLY WILL DIFFER DEPENDING UPON O.E.M.

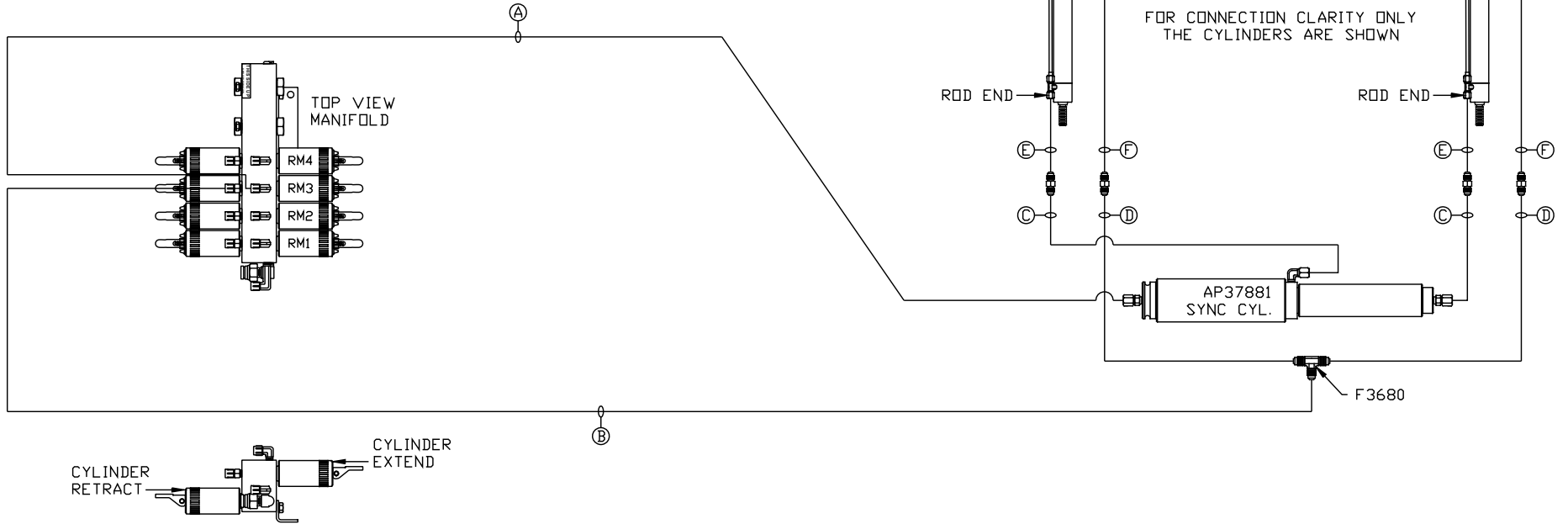
NOTE: INSTALLATION MUST CONFORM TO GOOD SHOP PRACTICES, SAE STANDARDS, RVIA STANDARDS, AND OTHER APPLICABLE STANDARDS.

MP70821 C/E  
16FEB16

NOTE: HOSES (E) AND (F) ARE INCLUDED WITH THE ROOM EXTENSION MECHANISM

- (A) HOSE ASSY 04  
ROD END - ALWAYS PRESSURIZED
- (B) HOSE ASSY 04  
CAP END
- (C) HOSE ASSY 03  
ROD END - ALWAYS PRESSURIZED  
HOSES MUST MAINTAIN EQUAL LENGTH AND DIAMETER
- (D) HOSE ASSY 04  
CAP END - HOSES MUST MAINTAIN EQUAL LENGTH AND DIAMETER

- (E) AP24632 HOSE ASSY HWH02HP x 48"  
ROD END - ALWAYS PRESSURIZED  
HOSES MUST MAINTAIN EQUAL LENGTH AND DIAMETER
- (F) AP24818 HOSE ASSY HWH02HP x 86"  
CAP END - MUST MAINTAIN EQUAL LENGTH AND DIAMETER



SIDE VIEW OF MANIFOLD-AP46854

LOCATION AND ORIENTATION OF PUMP/MANIFOLD ASSEMBLY WILL DIFFER DEPENDING UPON O.E.M.

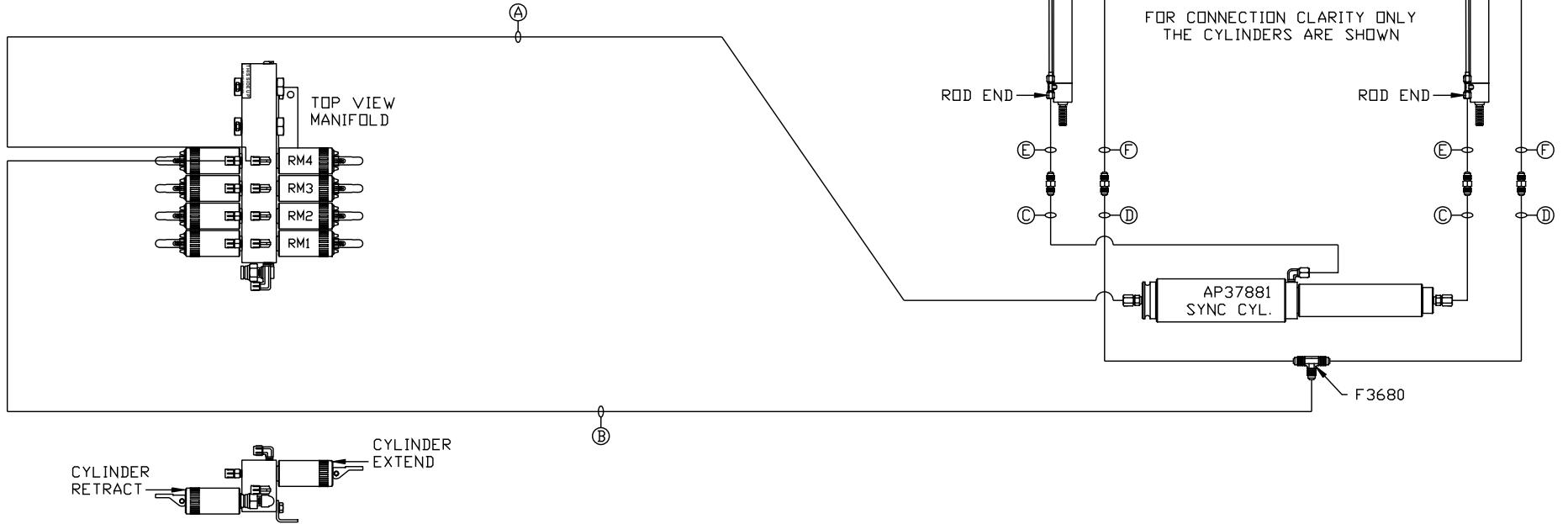
NOTE: INSTALLATION MUST CONFORM TO GOOD SHOP PRACTICES, SAE STANDARDS, RVIA STANDARDS, AND OTHER APPLICABLE STANDARDS.

MP70821 D/E  
21AUG14

NOTE: HOSES (E) AND (F) ARE INCLUDED WITH THE ROOM EXTENSION MECHANISM

- (A) HOSE ASSY 04  
ROD END - ALWAYS PRESSURIZED
- (B) HOSE ASSY 04  
CAP END
- (C) HOSE ASSY 03  
ROD END - ALWAYS PRESSURIZED  
HOSES MUST MAINTAIN EQUAL LENGTH AND DIAMETER
- (D) HOSE ASSY 04  
CAP END - HOSES MUST MAINTAIN EQUAL LENGTH AND DIAMETER

- (E) AP24632 HOSE ASSY HWH02HP x 48"  
ROD END - ALWAYS PRESSURIZED  
HOSES MUST MAINTAIN EQUAL LENGTH AND DIAMETER
- (F) AP24818 HOSE ASSY HWH02HP x 86"  
CAP END - MUST MAINTAIN EQUAL LENGTH AND DIAMETER



SIDE VIEW OF MANIFOLD-AP46854

LOCATION AND ORIENTATION OF PUMP/MANIFOLD ASSEMBLY WILL DIFFER DEPENDING UPON O.E.M.

NOTE: INSTALLATION MUST CONFORM TO GOOD SHOP PRACTICES, SAE STANDARDS, RVIA STANDARDS, AND OTHER APPLICABLE STANDARDS.

MP70821 E/E  
21AUG14