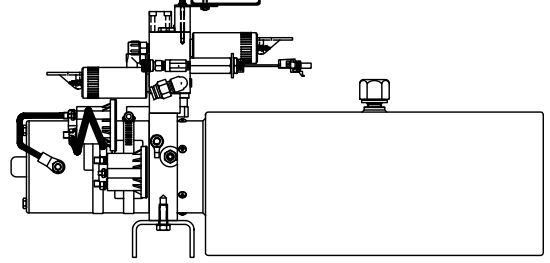
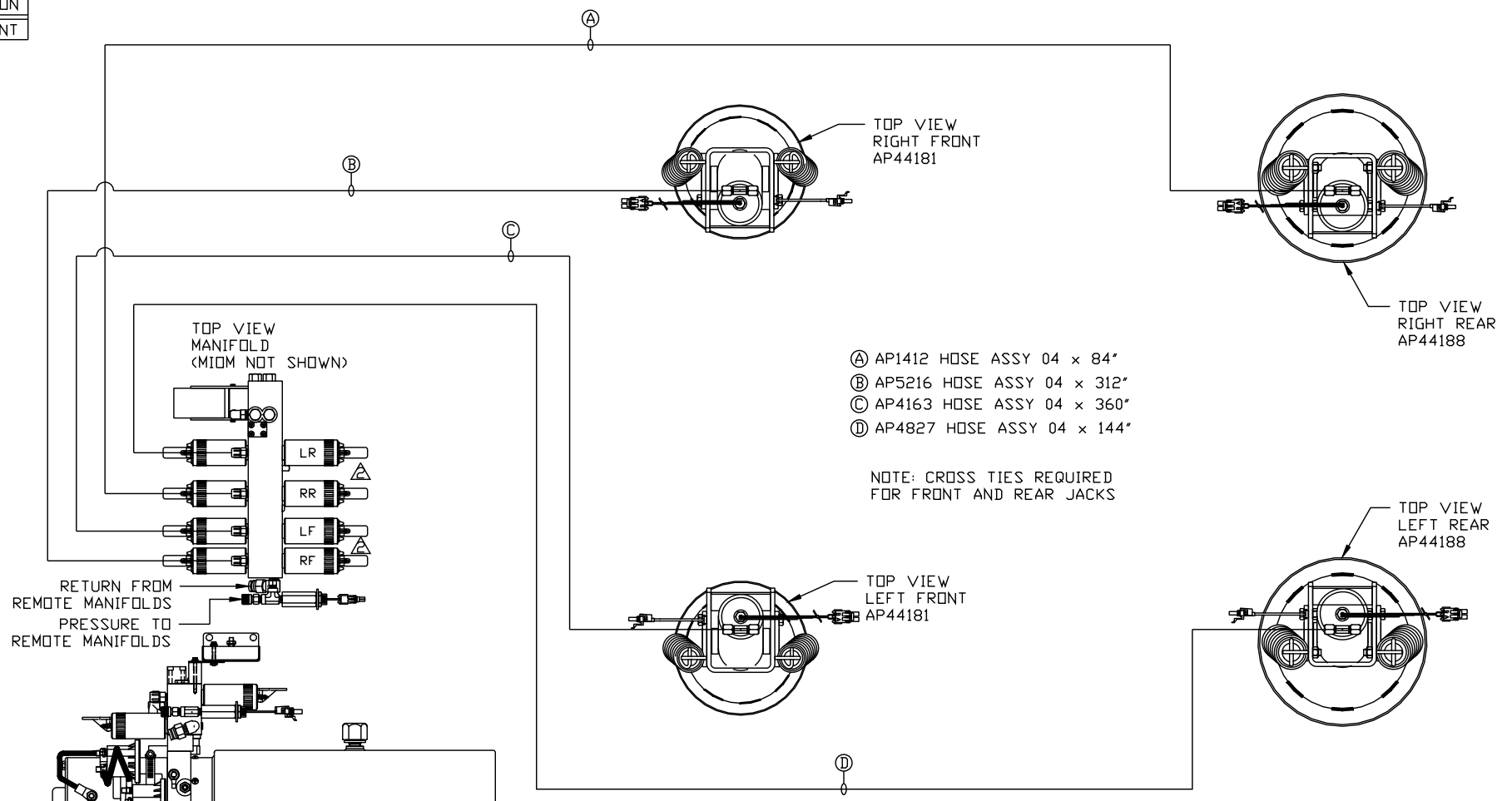


ORIENTATION
← FRONT



SIDE VIEW PUMP/MANIFOLD-AP54033

LOCATION AND ORIENTATION OF PUMP/MANIFOLD ASSEMBLY WILL DIFFER DEPENDING UPON O.E.M.

NOTE: INSTALLATION MUST CONFORM TO GOOD SHOP PRACTICES, SAE STANDARDS, RVIA STANDARDS, AND OTHER APPLICABLE STANDARDS.

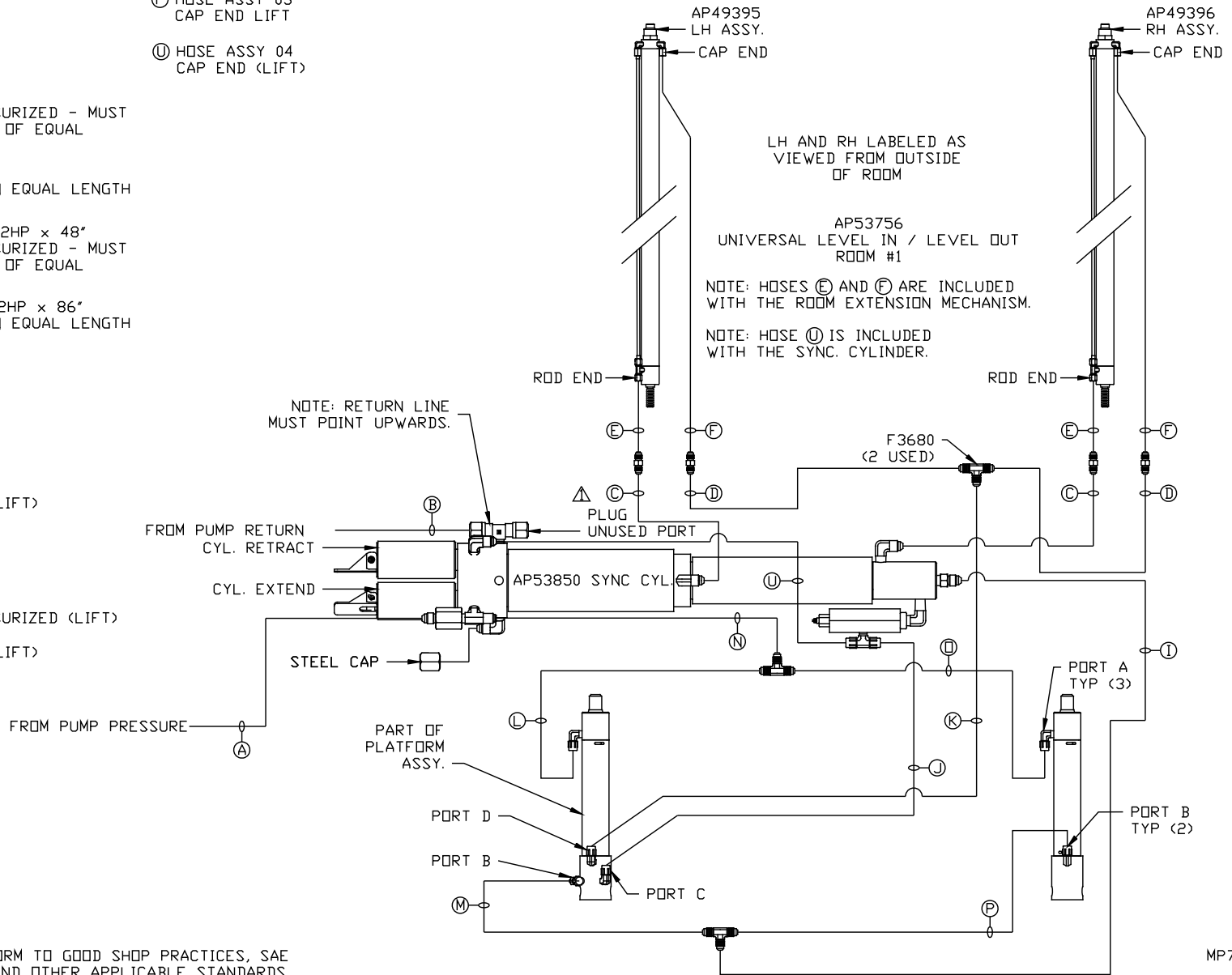
LEVELING SYSTEM: AP53773

		HWH		I-80 EXIT 267 SOUTH RT 1 MOSCOW, IOWA 52760	
①	18AUG16	SWAPPED FRONT, REAR		SCALE 1:6	DATE 22AUG14
②	14MAY15	CORRECTED TYPO		DRAWN BY .	
NO.	DATE	REVISION		HYD CONN DIAGRAM	
THE INFORMATION DISCLOSED ON THIS DRAWING IS CONFIDENTIAL AND MUST NOT BE DISCLOSED OR USED IN ANY MANNER WHICH WILL BE DETRIMENTAL TO THE HWH CORPORATION				DRAWING NUMBER	
				MP70823 A/B	

FARBER

- Ⓐ HOSE ASSY 04
PRESSURE
- Ⓑ .375" OD NYLON TUBING
RETURN
- Ⓒ HOSE ASSY 03
ROD END - ALWAYS PRESSURIZED - MUST
BE HIGH PRESSURE HOSES OF EQUAL
LENGTH AND DIAMETER
- Ⓓ HOSE ASSY 04
CAP END - MUST MAINTAIN EQUAL LENGTH
AND DIAMETER
- Ⓔ AP24632 HOSE ASSY HWH02HP x 48"
ROD END - ALWAYS PRESSURIZED - MUST
BE HIGH PRESSURE HOSES OF EQUAL
LENGTH AND DIAMETER
- Ⓕ AP24818 HOSE ASSY HWH02HP x 86"
CAP END - MUST MAINTAIN EQUAL LENGTH
AND DIAMETER
- Ⓖ HOSE ASSY 04
CAP END (LIFT)
- Ⓙ HOSE ASSY 03
CAP END (ROOM)
- Ⓚ HOSE ASSY 03
CAP END (ROOM)
- Ⓛ HOSE ASSY 03 ROD END (LIFT)
ALWAYS PRESSURIZED
- Ⓜ HOSE ASSY 03
CAP END (LIFT)
- Ⓝ HOSE ASSY 04
ROD END - ALWAYS PRESSURIZED (LIFT)
- Ⓟ HOSE ASSY 03 ROD END (LIFT)
ALWAYS PRESSURIZED

- Ⓠ HOSE ASSY 03
CAP END LIFT
- Ⓡ HOSE ASSY 04
CAP END (LIFT)



NOTE: INSTALLATION MUST CONFORM TO GOOD SHOP PRACTICES, SAE STANDARDS, RVIA STANDARDS, AND OTHER APPLICABLE STANDARDS.

MP70823 B/B
14MAY15