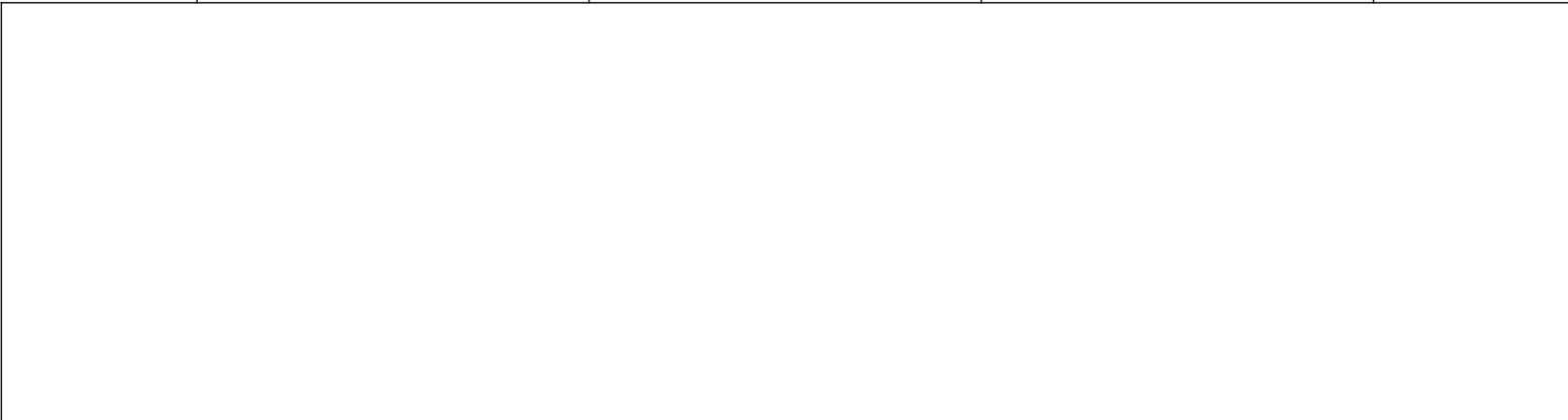


ORIENTATION
 ← FRONT

AP44808
 DUAL CYLINDER ROOM EXTENSION / 48"
 FUNCTION 2
 "A" ROOM

OEM PROVIDED
 ROOM



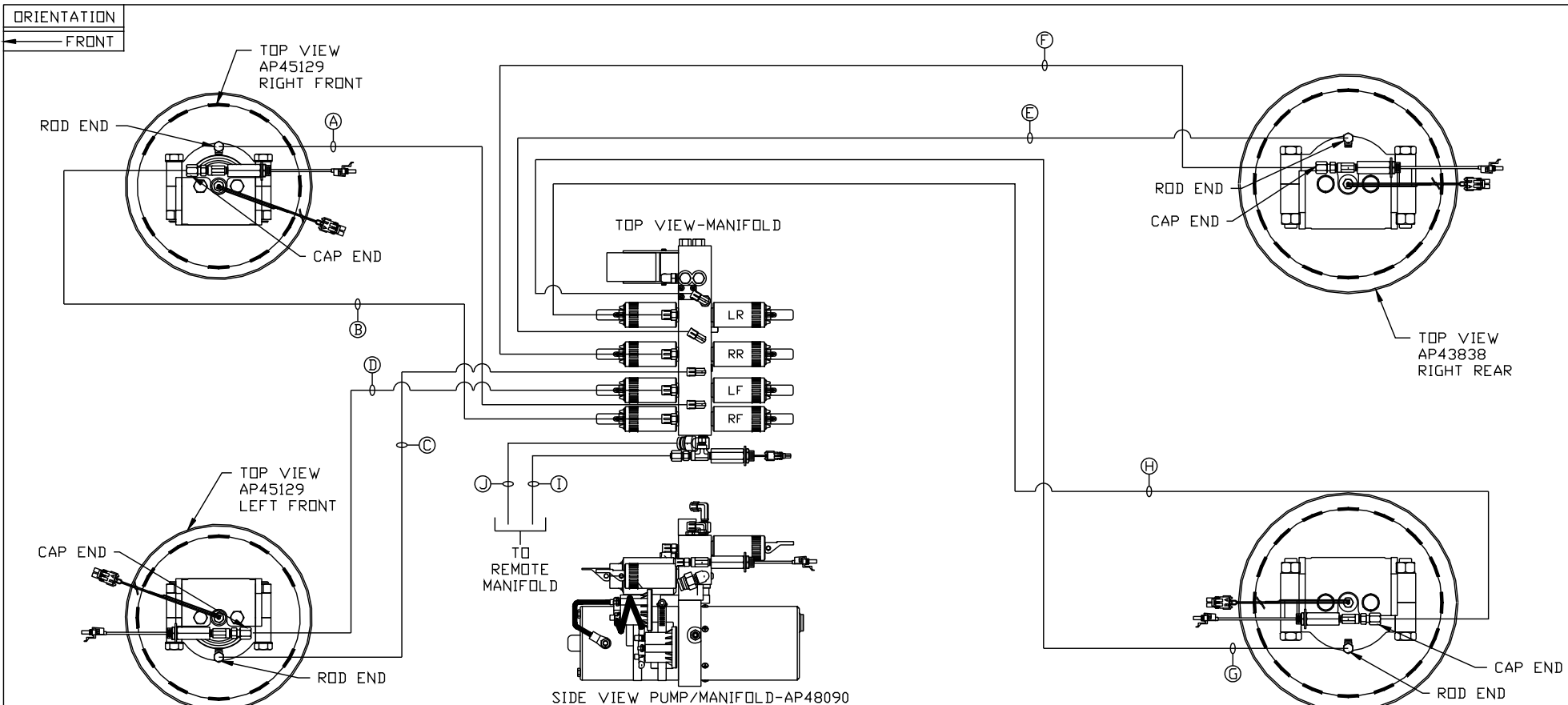
OEM PROVIDED
 ROOM

AP45774
 DUAL CYLINDER ROOM EXTENSION /
 39.5"
 FUNCTION 1
 "A" ROOM

NOTE: INSTALLATION MUST CONFORM TO GOOD SHOP PRACTICES, SAE STANDARDS, RVIA STANDARDS, AND OTHER APPLICABLE STANDARDS.

LEVELING SYSTEM: AP53261

		HWH		I-80 EXIT 267 SOUTH RT 1 MOSCOW, IOWA 52760	
		SCALE 1:6	DATE 01OCT14	DRAWN BY .	
		HYD CONN DIAGRAM			
NO.	DATE	REVISION		TZABAR	
THE INFORMATION DISCLOSED ON THIS DRAWING IS CONFIDENTIAL AND MUST NOT BE DISCLOSED OR USED IN ANY MANNER WHICH WILL BE DETRIMENTAL TO THE HWH CORPORATION				DRAWING NUMBER MP70824 A/D	



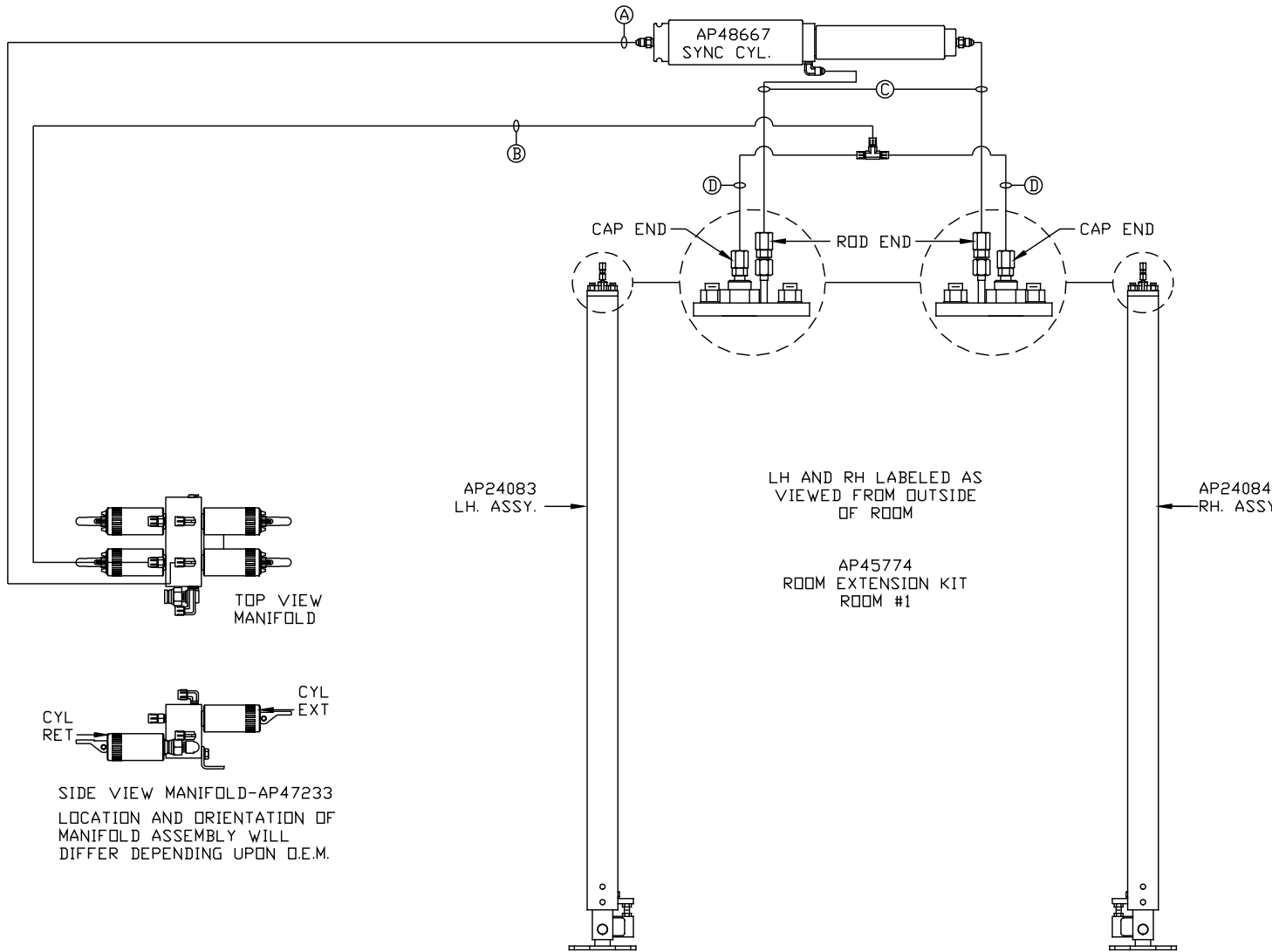
- Ⓐ AP4310 HOSE ASSY 04 × 204" - RF ROD END
- Ⓑ AP43436 HOSE ASSY .25/05 × 180" - RF CAP END
- Ⓒ AP16172 HOSE ASSY 04 × 150" - LF ROD END
- Ⓓ AP44863 HOSE ASSY .25/05 × 132" - LF CAP END
- Ⓔ AP7385 HOSE ASSY 04 × 252" - RR ROD END
- Ⓕ AP51468 HOSE ASSY .25/05 × 232" - RR CAP END
- Ⓖ AP4061 HOSE ASSY 04 × 216" - LR ROD END
- Ⓗ AP46310 HOSE ASSY .25/05 × 192" - LR CAP END
- Ⓢ AP3314 HOSE ASSY 04 × 48" - PRESSURE TO REMOTE MANIFOLD
- Ⓣ RETURN LINE 3/8" OD × 48" - RETURN FROM REMOTE MANIFOLD

NOTE: INSTALLATION MUST CONFORM TO GOOD SHOP PRACTICES, SAE STANDARDS, RVIA STANDARDS, AND OTHER APPLICABLE STANDARDS.

MP70824 B/D
01OCT14

ORIENTATION

← FRONT



- Ⓐ HOSE ASSY 04
ROD END - ALWAYS PRESSURIZED
- Ⓑ HOSE ASSY 04
CAP END
- Ⓒ HOSE ASSY 03
ROD END - ALWAYS PRESSURIZED
HOSES MUST MAINTAIN EQUAL
LENGTH AND DIAMETER
- Ⓓ HOSE ASSY 04
CAP END - HOSES MUST MAINTAIN
EQUAL LENGTH AND DIAMETER

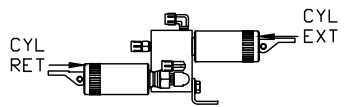
AP24083
LH. ASSY.

LH AND RH LABELED AS
VIEWED FROM OUTSIDE
OF ROOM

AP45774
ROOM
EXTENSION KIT
ROOM #1

AP24084
RH. ASSY.

TOP VIEW
MANIFOLD

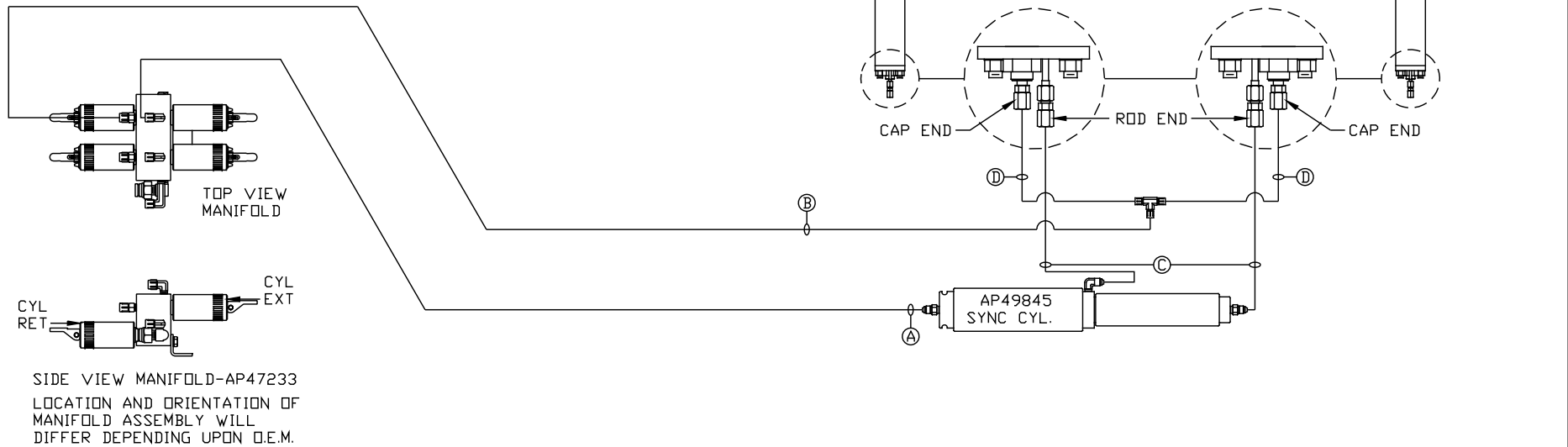


SIDE VIEW MANIFOLD-AP47233
LOCATION AND ORIENTATION OF
MANIFOLD ASSEMBLY WILL
DIFFER DEPENDING UPON O.E.M.

ORIENTATION

← FRONT

- Ⓐ HOSE ASSY 04
ROD END - ALWAYS PRESSURIZED
- Ⓑ HOSE ASSY 04
CAP END
- Ⓒ HOSE ASSY 03
ROD END - ALWAYS PRESSURIZED
HOSES MUST MAINTAIN EQUAL
LENGTH AND DIAMETER
- Ⓓ HOSE ASSY 04
CAP END - HOSES MUST MAINTAIN
EQUAL LENGTH AND DIAMETER



NOTE: INSTALLATION MUST CONFORM TO GOOD SHOP PRACTICES, SAE STANDARDS, RVIA STANDARDS, AND OTHER APPLICABLE STANDARDS.

MP70824 D/D
01OCT14