

THIS PAGE INTENTIONALLY LEFT BLANK

NOTE: INSTALLATION MUST CONFORM TO GOOD SHOP PRACTICES, SAE STANDARDS, RVIA STANDARDS, AND OTHER APPLICABLE STANDARDS.

CONTROL PACKAGE: AP54234

			HWH	I-80 EXIT 267 SOUTH RT 1 MOSCOW, IOWA 52760	
			SCALE 1:6	DATE 09OCT14	DRAWN BY .
1	20JUL15	UPDATED HOSES	HYD CONN DIAGRAM		
NO.	DATE	REVISION			
THE INFORMATION DISCLOSED ON THIS DRAWING IS CONFIDENTIAL AND MUST NOT BE DISCLOSED OR USED IN ANY MANNER WHICH WILL BE DETRIMENTAL TO THE HWH CORPORATION			RENEGADE-KIBBI	DRAWING NUMBER MP70827 A/D	

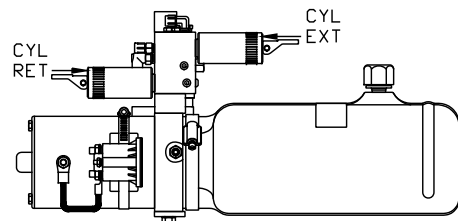
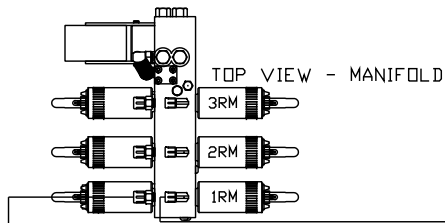
AP54237 HOSE KIT ROOM 1

*: PART OF THE ROOM
EXTENSION MECHANISM.

- Ⓐ AP6116 HOSE ASSY 04 x 240"
ROD END - ALWAYS PRESSURIZED
- Ⓑ AP6116 HOSE ASSY 04 x 240"
CAP END
- Ⓒ AP50779 HOSE ASSY 03 x 144"
WAS AP24645 HOSE ASSY 02 x 144" HWH HP
ROD END - ALWAYS PRESSURIZED - MUST
BE HIGH PRESSURE HOSES OF EQUAL
LENGTH AND DIAMETER
- Ⓓ AP4827 HOSE ASSY 04 x 144"
CAP END - MUST MAINTAIN EQUAL LENGTH
AND DIAMETER

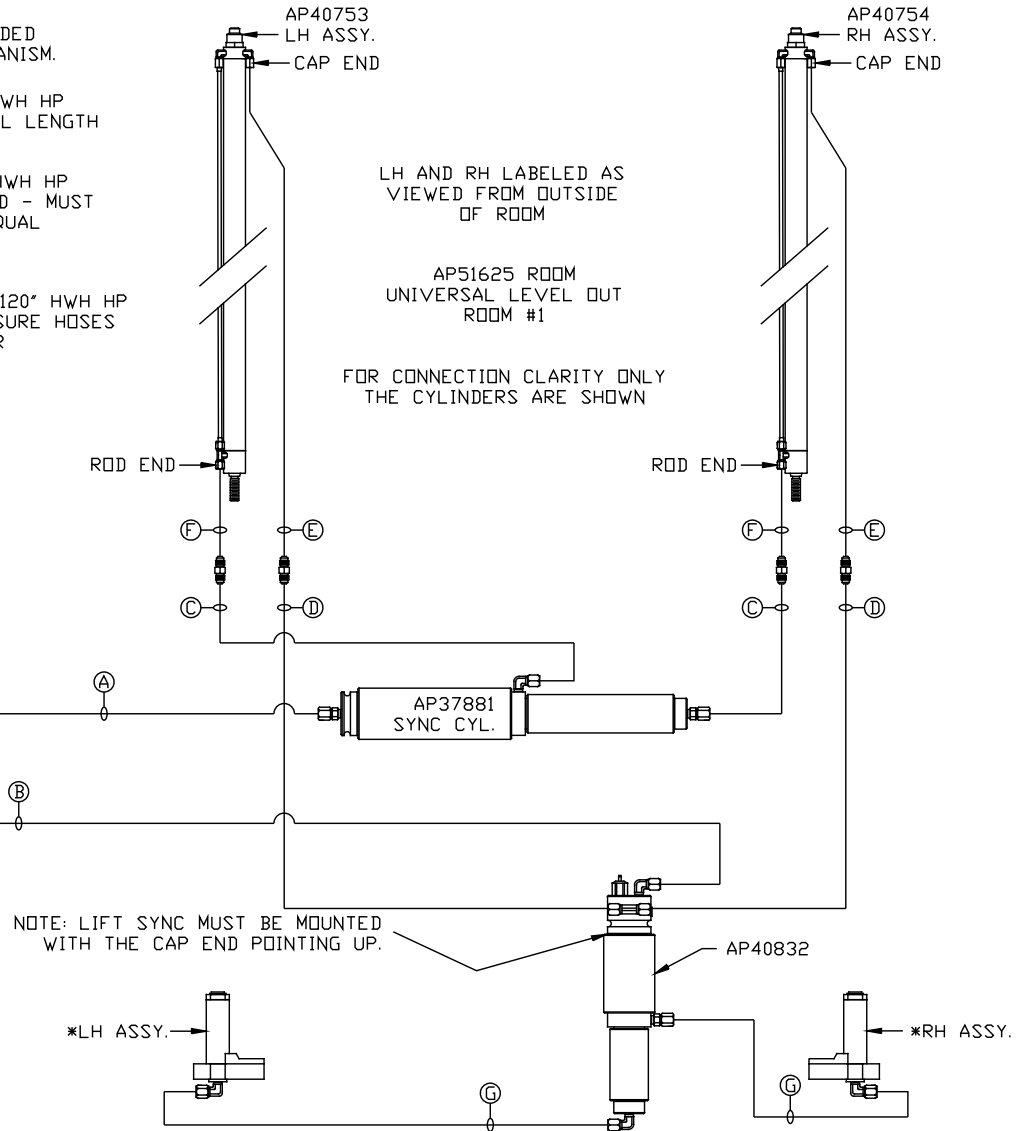
NOTE: HOSES Ⓔ AND Ⓕ ARE INCLUDED
WITH THE ROOM EXTENSION MECHANISM.

- Ⓔ AP24818 HOSE ASSY 02 x 86" HWH HP
CAP END - MUST MAINTAIN EQUAL LENGTH
AND DIAMETER
- Ⓕ AP24632 HOSE ASSY 02 x 48" HWH HP
ROD END - ALWAYS PRESSURIZED - MUST
BE HIGH PRESSURE HOSES OF EQUAL
LENGTH AND DIAMETER
- Ⓖ AP49245 HOSE ASSY 03 x 120"
WAS AP24642 HOSE ASSY 02 x 120" HWH HP
CAP END - MUST BE HIGH PRESSURE HOSES
OF EQUAL LENGTH AND DIAMETER



LOCATION AND ORIENTATION OF
PUMP/MANIFOLD ASSEMBLY WILL
DIFFER DEPENDING UPON O.E.M.

NOTE: INSTALLATION MUST CONFORM TO GOOD SHOP PRACTICES, SAE
STANDARDS, RVIA STANDARDS, AND OTHER APPLICABLE STANDARDS.



MP70827 B/D
20JUL15

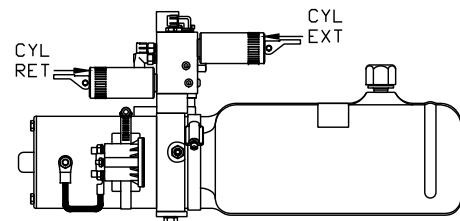
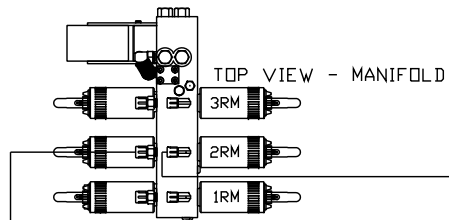
AP54238 HOSE KIT ROOM 2

*: PART OF THE ROOM
EXTENSION MECHANISM.

- Ⓐ AP4163 HOSE ASSY 04 x 360"
ROD END - ALWAYS PRESSURIZED
- Ⓑ AP4163 HOSE ASSY 04 x 360"
CAP END
- Ⓒ AP50779 HOSE ASSY 03 x 144"
WAS AP24645 HOSE ASSY 02 x 144" HWH HP
ROD END - ALWAYS PRESSURIZED - MUST
BE HIGH PRESSURE HOSES OF EQUAL
LENGTH AND DIAMETER
- Ⓓ AP4827 HOSE ASSY 04 x 144"
CAP END - MUST MAINTAIN EQUAL LENGTH
AND DIAMETER

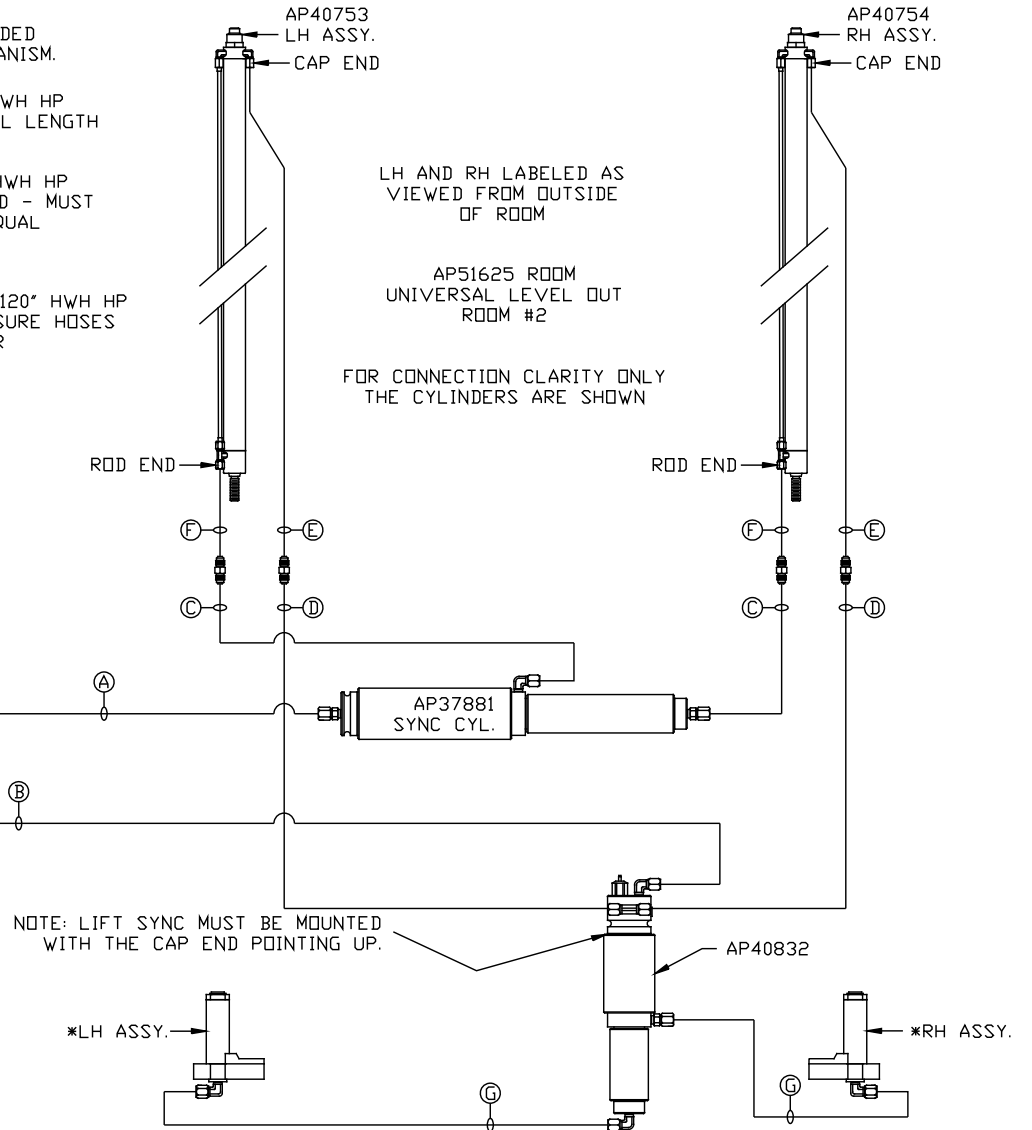
NOTE: HOSES Ⓔ AND Ⓕ ARE INCLUDED
WITH THE ROOM EXTENSION MECHANISM.

- Ⓔ AP24818 HOSE ASSY 02 x 86" HWH HP
CAP END - MUST MAINTAIN EQUAL LENGTH
AND DIAMETER
- Ⓕ AP24632 HOSE ASSY 02 x 48" HWH HP
ROD END - ALWAYS PRESSURIZED - MUST
BE HIGH PRESSURE HOSES OF EQUAL
LENGTH AND DIAMETER
- Ⓖ AP49245 HOSE ASSY 03 x 120"
WAS AP24642 HOSE ASSY 02 x 120" HWH HP
CAP END - MUST BE HIGH PRESSURE HOSES
OF EQUAL LENGTH AND DIAMETER



LOCATION AND ORIENTATION OF
PUMP/MANIFOLD ASSEMBLY WILL
DIFFER DEPENDING UPON O.E.M.

NOTE: INSTALLATION MUST CONFORM TO GOOD SHOP PRACTICES, SAE
STANDARDS, RVIA STANDARDS, AND OTHER APPLICABLE STANDARDS.



MP70827 C/D
20JUL15

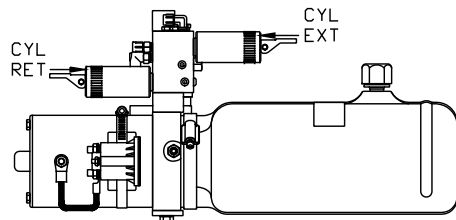
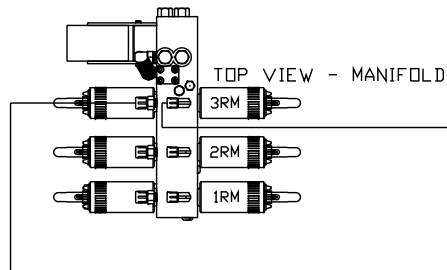
AP54239 HOSE KIT ROOM 3

*: PART OF THE ROOM
EXTENSION MECHANISM.

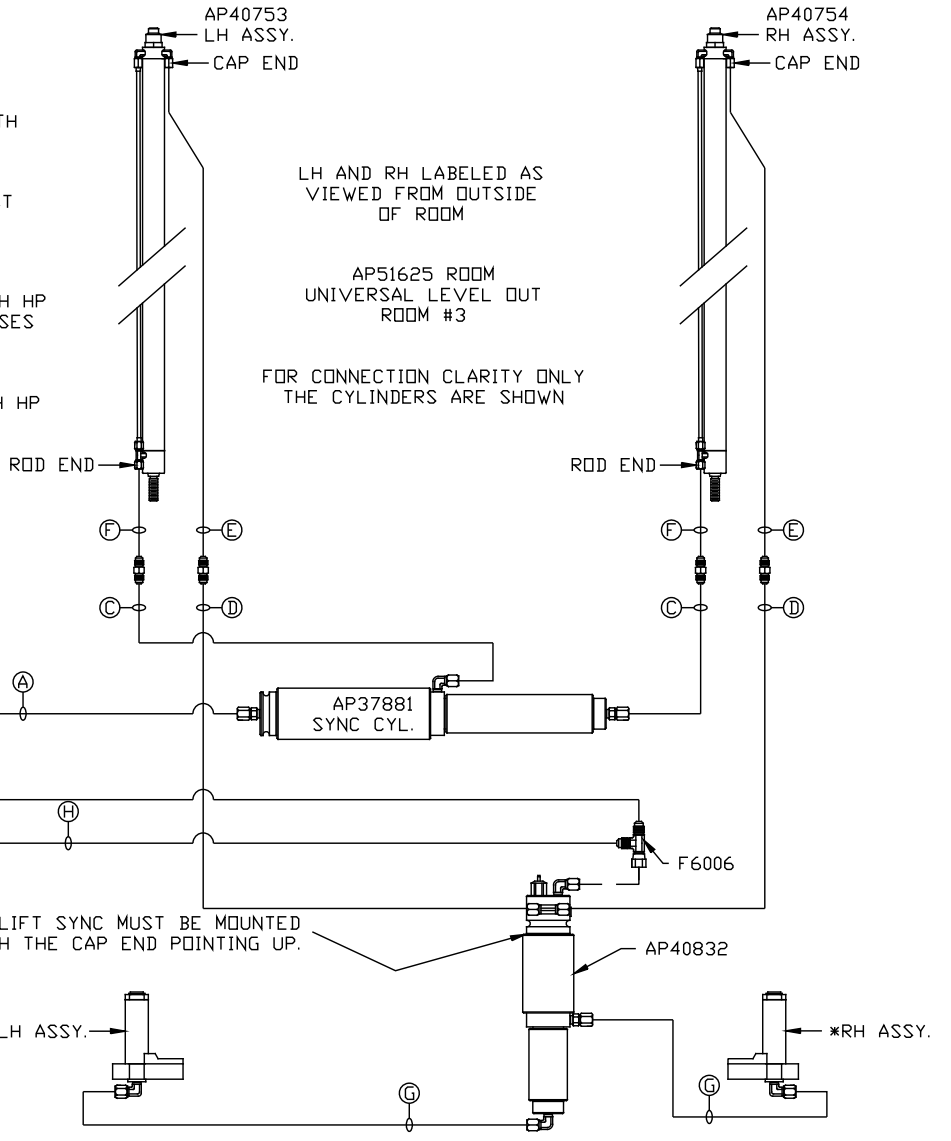
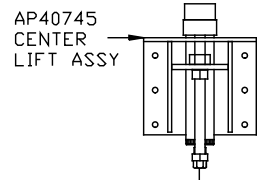
- Ⓐ AP53032 HOSE ASSY 04 x 420"
ROD END - ALWAYS PRESSURIZED
- Ⓑ AP53032 HOSE ASSY 04 x 420"
CAP END
- Ⓒ AP49517 HOSE ASSY 03 x 180"
WAS AP24651 HOSE ASSY 02 x 180" HWH HP
ROD END - ALWAYS PRESSURIZED - MUST
BE HIGH PRESSURE HOSES OF EQUAL
LENGTH AND DIAMETER
- Ⓓ AP5965 HOSE ASSY 04 x 180"
CAP END - MUST MAINTAIN EQUAL LENGTH
AND DIAMETER

NOTE: HOSES Ⓔ AND Ⓕ ARE INCLUDED
WITH THE ROOM EXTENSION MECHANISM.

- Ⓔ AP24818 HOSE ASSY 02 x 86" HWH HP
CAP END - MUST MAINTAIN EQUAL LENGTH
AND DIAMETER
- Ⓕ AP24632 HOSE ASSY 02 x 48" HWH HP
ROD END - ALWAYS PRESSURIZED - MUST
BE HIGH PRESSURE HOSES OF EQUAL
LENGTH AND DIAMETER
- Ⓖ AP49245 HOSE ASSY 03 x 120"
WAS AP24642 HOSE ASSY 02 x 120" HWH HP
CAP END - MUST BE HIGH PRESSURE HOSES
OF EQUAL LENGTH AND DIAMETER
- Ⓗ AP50909 HOSE ASSY 03 x 72"
WAS AP24635 HOSE ASSY 02 x 72" HWH HP
CAP END



LOCATION AND ORIENTATION OF
PUMP/MANIFOLD ASSEMBLY WILL
DIFFER DEPENDING UPON D.E.M.



NOTE: INSTALLATION MUST CONFORM TO GOOD SHOP PRACTICES, SAE
STANDARDS, RVIA STANDARDS, AND OTHER APPLICABLE STANDARDS.

MP70827 D/D
20JUL15