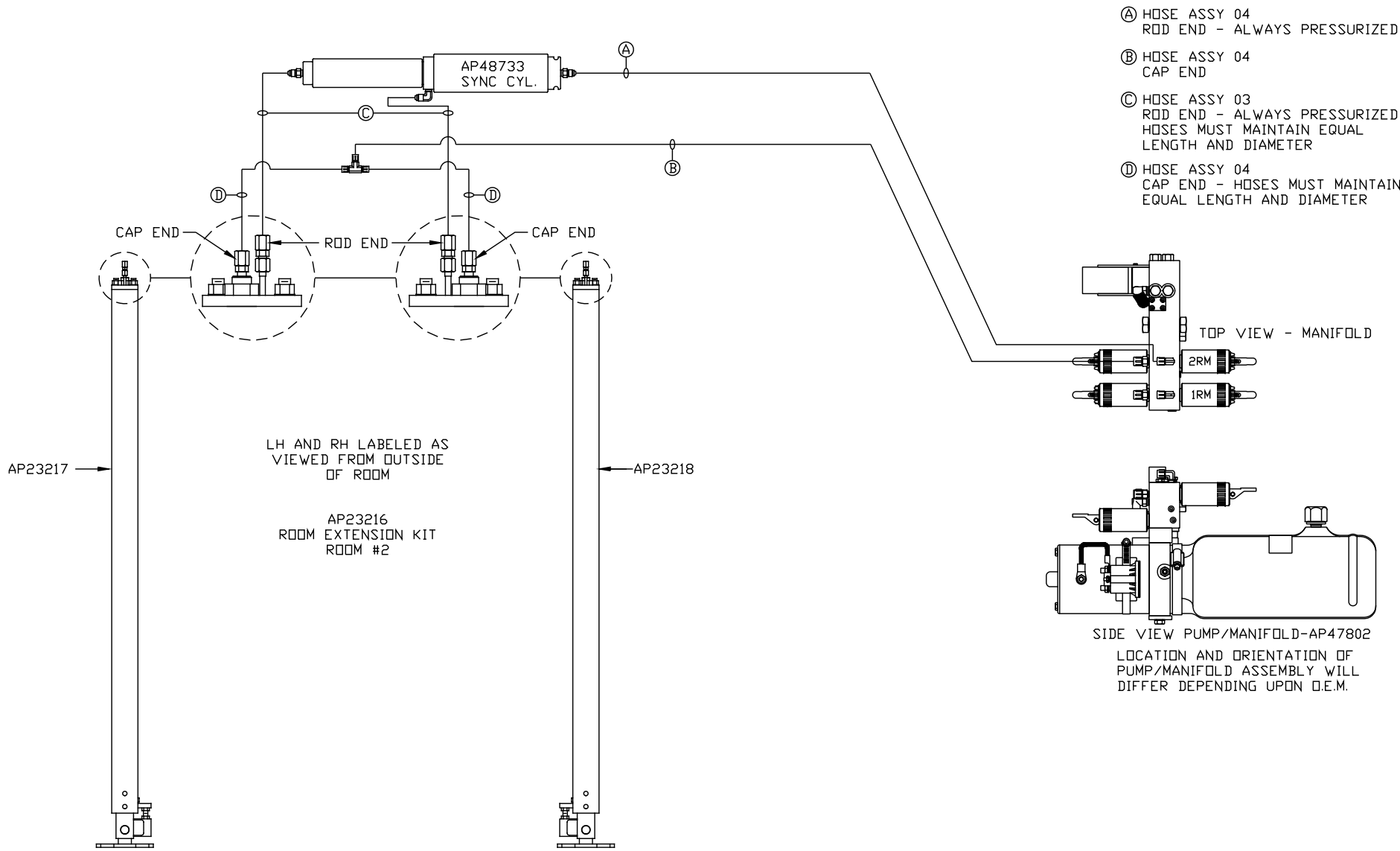


- ④ HOSE ASSY 04  
ROD END - ALWAYS PRESSURIZED
- ② HOSE ASSY 04  
CAP END
- ③ HOSE ASSY 03  
ROD END - ALWAYS PRESSURIZED  
HOSES MUST MAINTAIN EQUAL LENGTH AND DIAMETER
- ① HOSE ASSY 04  
CAP END - HOSES MUST MAINTAIN EQUAL LENGTH AND DIAMETER

NOTE: INSTALLATION MUST CONFORM TO GOOD SHOP PRACTICES, SAE STANDARDS, RVIA STANDARDS, AND OTHER APPLICABLE STANDARDS.

CONTROL PACKAGE: AP53570

			HWH	I-80 EXIT 267 SOUTH RT 1 MOSCOW, IOWA 52760
			SCALE 1:6	DATE 26NOV14
			DRAWN BY .	
			HYD CONN DIAGRAM	
			ULTRA SANTEK	DRAWING NUMBER MP70831 A/B
NO.	DATE	REVISION	THE INFORMATION DISCLOSED ON THIS DRAWING IS CONFIDENTIAL AND MUST NOT BE DISCLOSED OR USED IN ANY MANNER WHICH WILL BE DETRIMENTAL TO THE HWH CORPORATION	



- Ⓐ HOSE ASSY 04  
ROD END - ALWAYS PRESSURIZED
- Ⓑ HOSE ASSY 04  
CAP END
- Ⓒ HOSE ASSY 03  
ROD END - ALWAYS PRESSURIZED  
HOSES MUST MAINTAIN EQUAL LENGTH AND DIAMETER
- Ⓓ HOSE ASSY 04  
CAP END - HOSES MUST MAINTAIN EQUAL LENGTH AND DIAMETER

NOTE: INSTALLATION MUST CONFORM TO GOOD SHOP PRACTICES, SAE STANDARDS, RVIA STANDARDS, AND OTHER APPLICABLE STANDARDS.