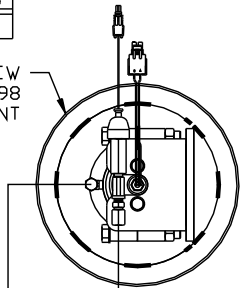


ORIENTATION

← FRONT

TOP VIEW
AP43998
RIGHT FRONT

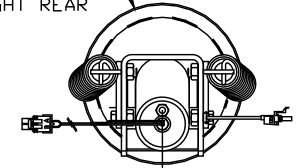


AP55021 JACK HOSE KIT

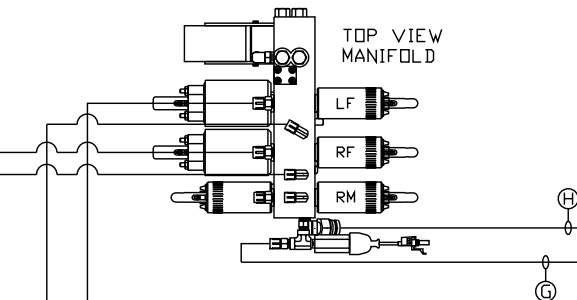
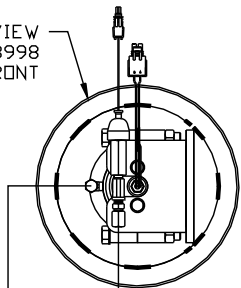
- Ⓐ AP6115 HOSE ASSY 04 x 168" ROD END RIGHT FRONT JACK
- Ⓑ AP23233 HOSE ASSY 05 x 168" CAP END RIGHT FRONT JACK
- Ⓒ AP5352 HOSE ASSY 04 x 96" ROD END LEFT FRONT JACK
- Ⓓ AP8383 HOSE ASSY 05 x 96" CAP END LEFT FRONT JACK

- Ⓔ AP5561 HOSE ASSY 04 x 336" CAP END LEFT REAR JACK
- Ⓕ AP4164 HOSE ASSY 04 x 384" CAP END RIGHT JACK
- Ⓖ AP4060 HOSE ASSY 04 x 24" PRESSURE
- Ⓗ P31138 RETURN LINE .375" x 36" RETURN

TOP VIEW
AP43876
RIGHT REAR

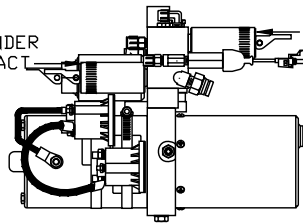


TOP VIEW
AP43998
LEFT FRONT



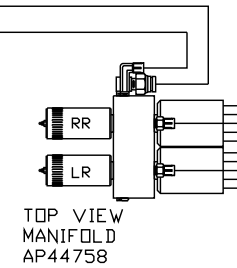
CYLINDER
RETRACT

CYLINDER
EXTEND

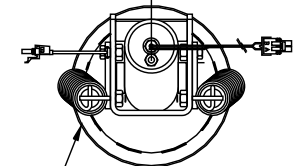


SIDE VIEW PUMP/MANIFOLD-AP46592

LOCATION AND ORIENTATION OF
PUMP/MANIFOLD ASSEMBLY WILL
DIFFER DEPENDING UPON O.E.M.



TOP VIEW
AP43876
LEFT REAR



NOTE: INSTALLATION MUST CONFORM TO GOOD SHOP PRACTICES, SAE STANDARDS, RVIA STANDARDS, AND OTHER APPLICABLE STANDARDS.

LEVELING SYSTEM: AP55015

1	17MAY16	REVISED SYNC. CYL.
NO.	DATE	REVISION

THE INFORMATION DISCLOSED ON THIS DRAWING IS CONFIDENTIAL AND MUST NOT BE DISCLOSED OR USED IN ANY MANNER WHICH WILL BE DETRIMENTAL TO THE HWH CORPORATION

HWH I-80 EXIT 267 SOUTH
RT 1 MOSCOW, IOWA 52760

SCALE 1:6 DATE 26MAY15 DRAWN BY .

HYD CONN DIAGRAM

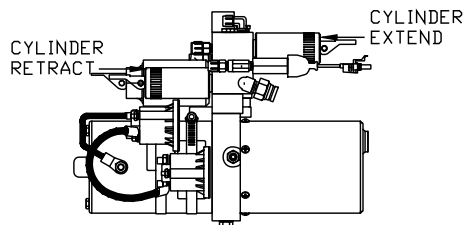
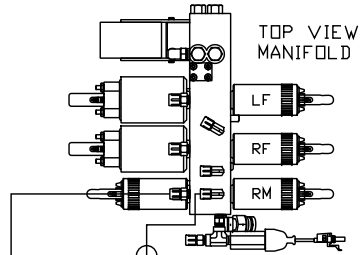
ROLLINGSTAR

DRAWING NUMBER
MP70864 A/B

NOTE: HOSES ① AND ② ARE INCLUDED WITH THE ROOM EXTENSION MECHANISM

- Ⓐ HOSE ASSY 04
ROD END - ALWAYS PRESSURIZED
- Ⓑ HOSE ASSY 04
CAP END (ROOM)
- Ⓒ HOSE ASSY 04
ROD END - ALWAYS PRESSURIZED (LIFT)
- Ⓓ HOSE ASSY 04
CAP END (ROOM)
- Ⓔ HOSE ASSY 04
CAP END (LIFT)
- Ⓕ HOSE ASSY 04
CAP END (ROOM)

- Ⓖ HOSE ASSY 03
ROD END - ALWAYS PRESSURIZED
HOSES MUST BE HIGH PRESSURE
HOSES OF EQUAL LENGTH AND DIAMETER
- Ⓗ HOSE ASSY 04
CAP END - HOSES MUST MAINTAIN
EQUAL LENGTH AND DIAMETER
- Ⓘ AP24632 HOSE ASSY HWH02HP x 48"
ROD END - ALWAYS PRESSURIZED -
MUST BE HIGH PRESSURE HOSES OF
EQUAL LENGTH AND DIAMETER
- Ⓝ AP24818 HOSE ASSY HWH02HP x 86"
CAP END - MUST MAINTAIN EQUAL
LENGTH AND DIAMETER
- Ⓚ HOSE ASSY 04 CAP END (LIFT)
MUST MAINTAIN EQUAL LENGTH
AND DIAMETER
- Ⓛ HOSE ASSY 04 ROD END (LIFT)
ALWAYS PRESSURIZED - MUST MAINTAIN
EQUAL LENGTH AND DIAMETER

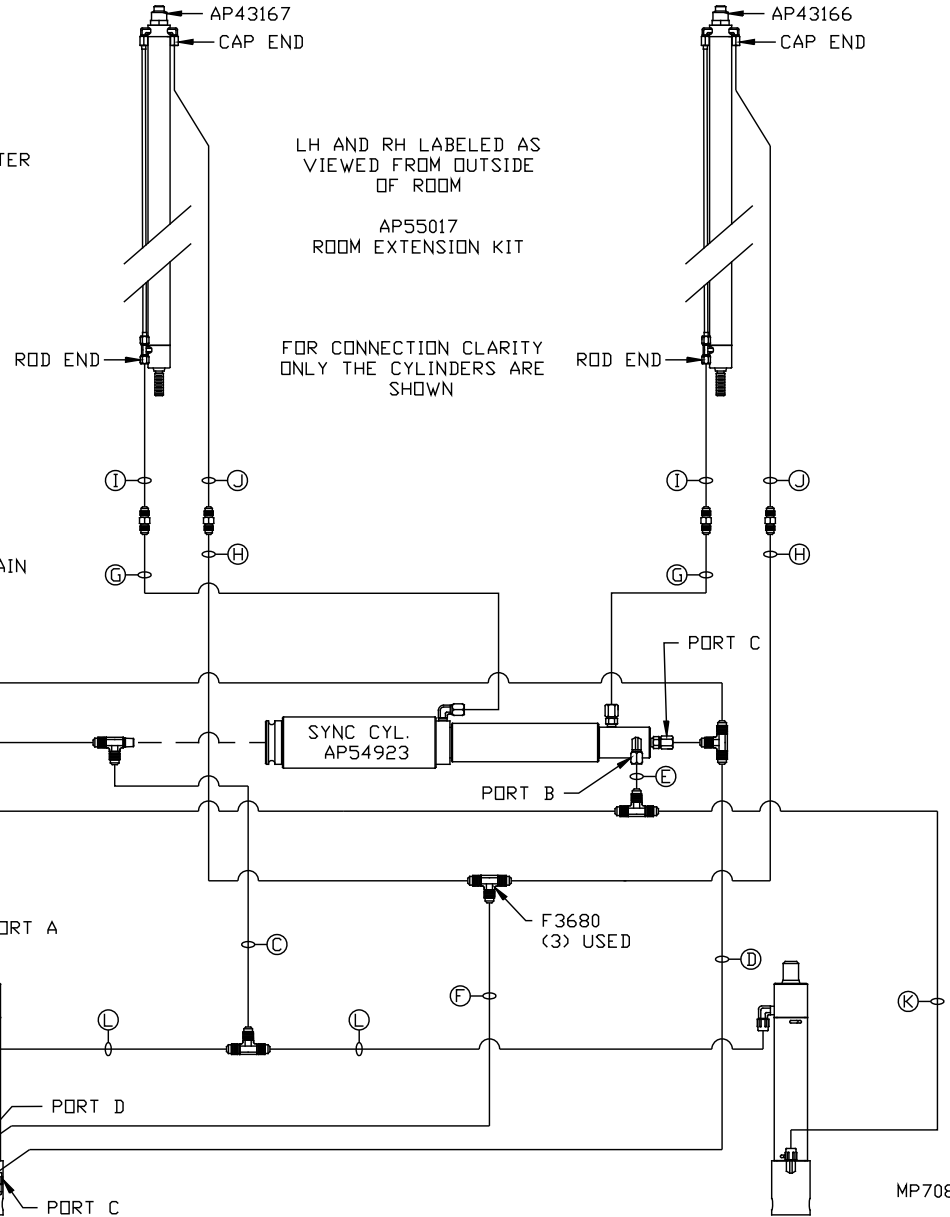


LOCATION AND ORIENTATION OF
PUMP/MANIFOLD ASSEMBLY WILL
DIFFER DEPENDING UPON O.E.M.

CYL ASSY
(PART OF AP47850
PLATFORM ASSY.)

NOTE: GENERIC VIEWS FOR CLARITY. CYLINDERS MAY BE REVERSED

NOTE: INSTALLATION MUST CONFORM TO GOOD SHOP PRACTICES, SAE
STANDARDS, RVIA STANDARDS, AND OTHER APPLICABLE STANDARDS.



MP70864 B/B
17MAY16