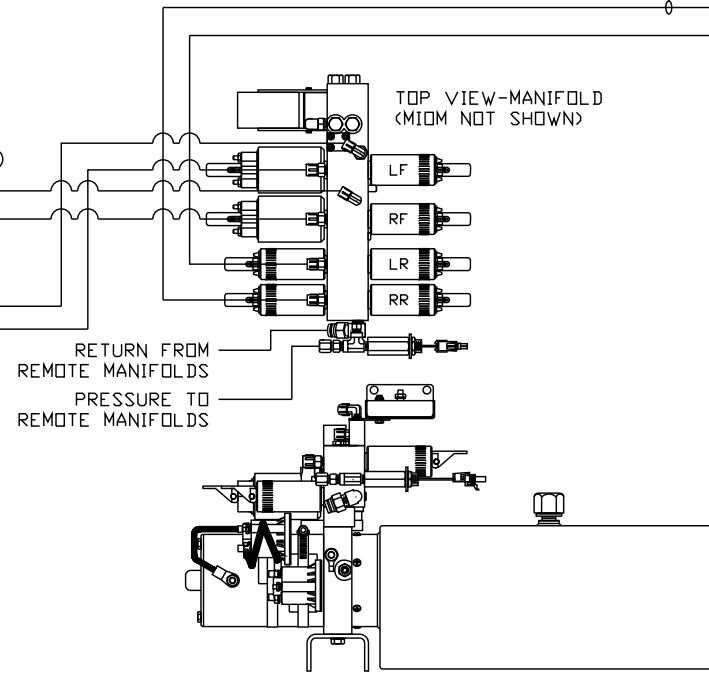
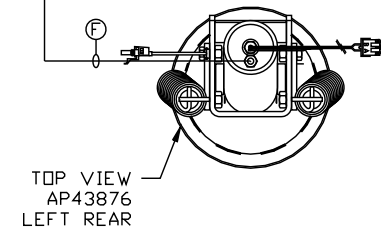
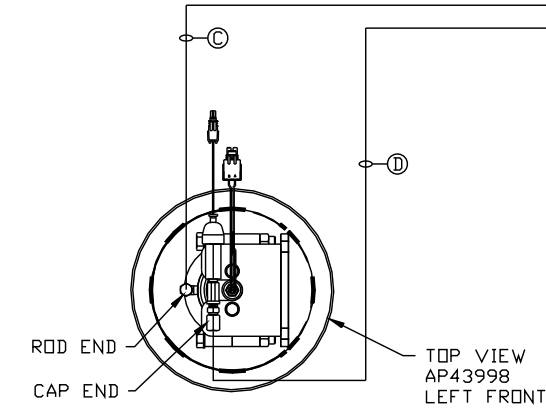
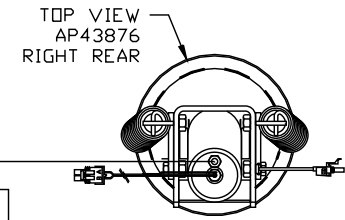
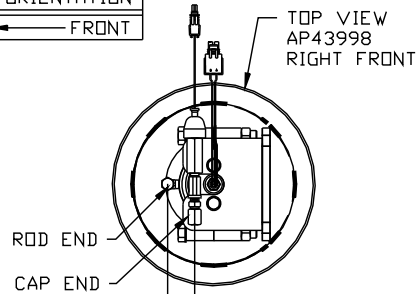


ORIENTATION
← FRONT



NOTE: CROSS TIES REQUIRED FOR FRONT AND REAR JACKS

SIDE VIEW PUMP/MANIFOLD-AP55220
LOCATION AND ORIENTATION OF PUMP/MANIFOLD ASSEMBLY WILL DIFFER DEPENDING UPON O.E.M.

- Ⓐ AP6115 HOSE ASSY 04 X 168" - RF ROD END
- Ⓑ AP23233 HOSE ASSY 05 X 168" - RF CAP END
- Ⓒ AP5352 HOSE ASSY 04 X 96" - LF ROD END
- Ⓓ AP8383 HOSE ASSY 05 X 96" - RF CAP END
- Ⓔ AP4669 HOSE ASSY 04 X 408" - RR CAP END
- Ⓕ AP4163 HOSE ASSY 04 X 360" - LR CAP END

NOTE: INSTALLATION MUST CONFORM TO GOOD SHOP PRACTICES, SAE STANDARDS, RVIA STANDARDS, AND OTHER APPLICABLE STANDARDS.

LEVELING SYSTEM: AP55250

NO.	DATE	REVISION
THE INFORMATION DISCLOSED ON THIS DRAWING IS CONFIDENTIAL AND MUST NOT BE DISCLOSED OR USED IN ANY MANNER WHICH WILL BE DETRIMENTAL TO THE HWH CORPORATION		

HWH I-80 EXIT 267 SOUTH
RT 1 MOSCOW, IOWA 52760

SCALE 1:6 DATE 09JUN15 DRAWN BY .

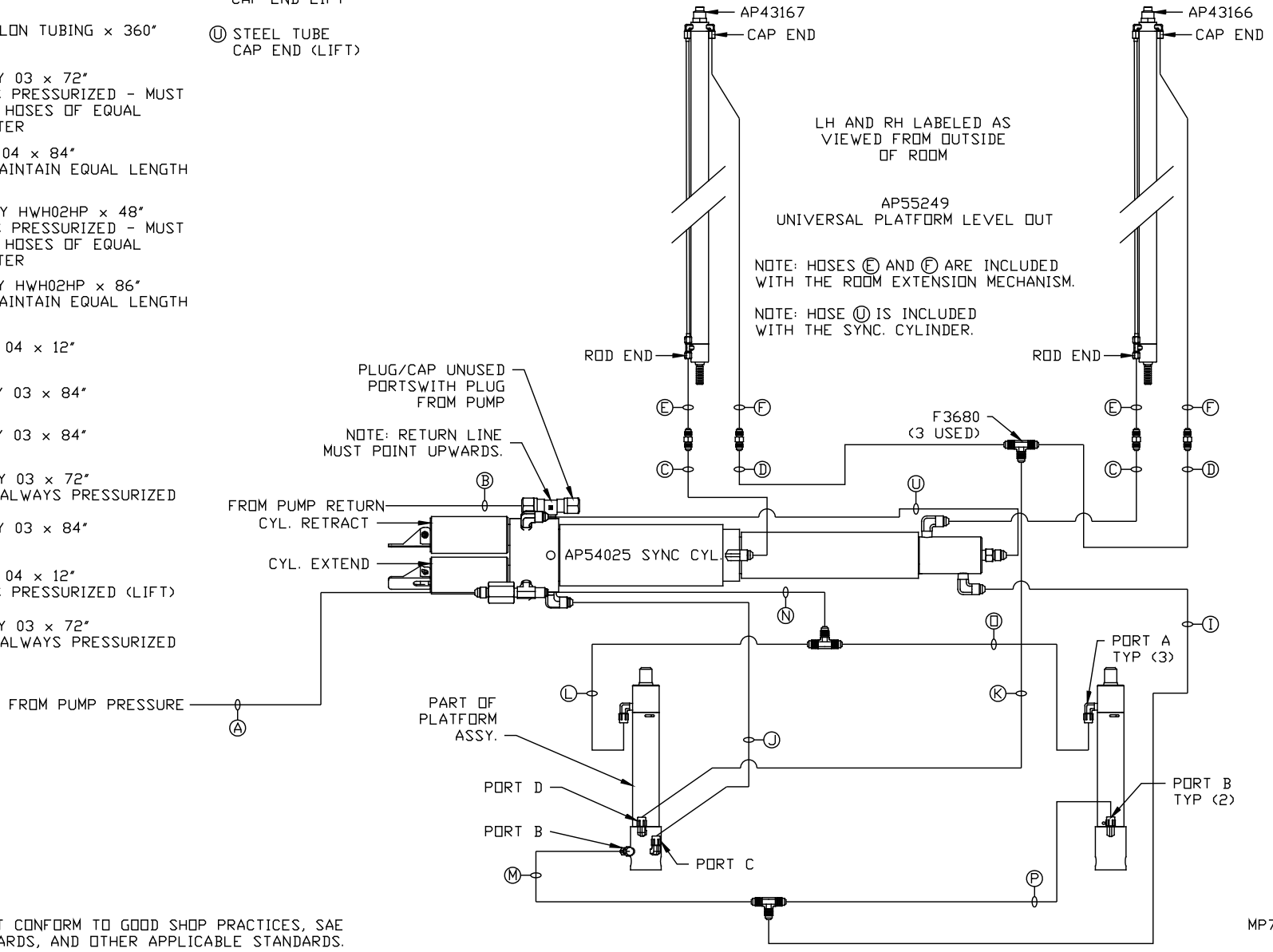
HYD CONN DIAGRAM

ROLLINGSTAR

DRAWING NUMBER
MP70886 A/B

- (A) AP4064 HOSE ASSY 04 x 300" PRESSURE
- (B) P4479 .375" OD NYLON TUBING x 360" RETURN
- (C) AP50909 HOSE ASSY 03 x 72" ROD END - ALWAYS PRESSURIZED - MUST BE HIGH PRESSURE HOSES OF EQUAL LENGTH AND DIAMETER
- (D) AP1412 HOSE ASSY 04 x 84" CAP END - MUST MAINTAIN EQUAL LENGTH AND DIAMETER
- (E) AP24632 HOSE ASSY HWH02HP x 48" ROD END - ALWAYS PRESSURIZED - MUST BE HIGH PRESSURE HOSES OF EQUAL LENGTH AND DIAMETER
- (F) AP24818 HOSE ASSY HWH02HP x 86" CAP END - MUST MAINTAIN EQUAL LENGTH AND DIAMETER
- (I) AP4158 HOSE ASSY 04 x 12" CAP END (LIFT)
- (J) AP50671 HOSE ASSY 03 x 84" CAP END (ROOM)
- (K) AP50671 HOSE ASSY 03 x 84" CAP END (ROOM)
- (L) AP50909 HOSE ASSY 03 x 72" ROD END (LIFT) - ALWAYS PRESSURIZED
- (M) AP50671 HOSE ASSY 03 x 84" CAP END (LIFT)
- (N) AP4158 HOSE ASSY 04 x 12" ROD END - ALWAYS PRESSURIZED (LIFT)
- (O) AP50909 HOSE ASSY 03 x 72" ROD END (LIFT) - ALWAYS PRESSURIZED

- (P) AP50671 HOSE ASSY 03 x 84" CAP END LIFT
- AP55255 HOSE KIT 1 ROOM
- (U) STEEL TUBE CAP END (LIFT)



NOTE: INSTALLATION MUST CONFORM TO GOOD SHOP PRACTICES, SAE STANDARDS, RVIA STANDARDS, AND OTHER APPLICABLE STANDARDS.

MP70886 B/B
09JUN15