

- Ⓐ AP4159 HOSE ASSY 04 x 72" - RF ROD END
- Ⓑ AP42057 HOSE ASSY 05 x 72" - RF CAP END
- Ⓒ AP4159 HOSE ASSY 04 x 72" - LF ROD END
- Ⓓ AP42057 HOSE ASSY 05 x 72" - LF CAP END
- Ⓔ AP4163 HOSE ASSY 04 x 360" - RR ROD END
- Ⓕ AP8381 HOSE ASSY 05 x 360" - RR CAP END
- Ⓖ AP4163 HOSE ASSY 04 x 360" - LR ROD END
- Ⓗ AP8381 HOSE ASSY 05 x 360" - LR CAP END

SIDE VIEW PUMP/MANIFOLD-AP55210
 LOCATION AND ORIENTATION OF PUMP/MANIFOLD ASSEMBLY WILL DIFFER DEPENDING UPON O.E.M.

NOTE: INSTALLATION MUST CONFORM TO GOOD SHOP PRACTICES, SAE STANDARDS, RVIA STANDARDS, AND OTHER APPLICABLE STANDARDS.

LEVELING SYSTEM: AP55324

NO.	DATE	REVISION

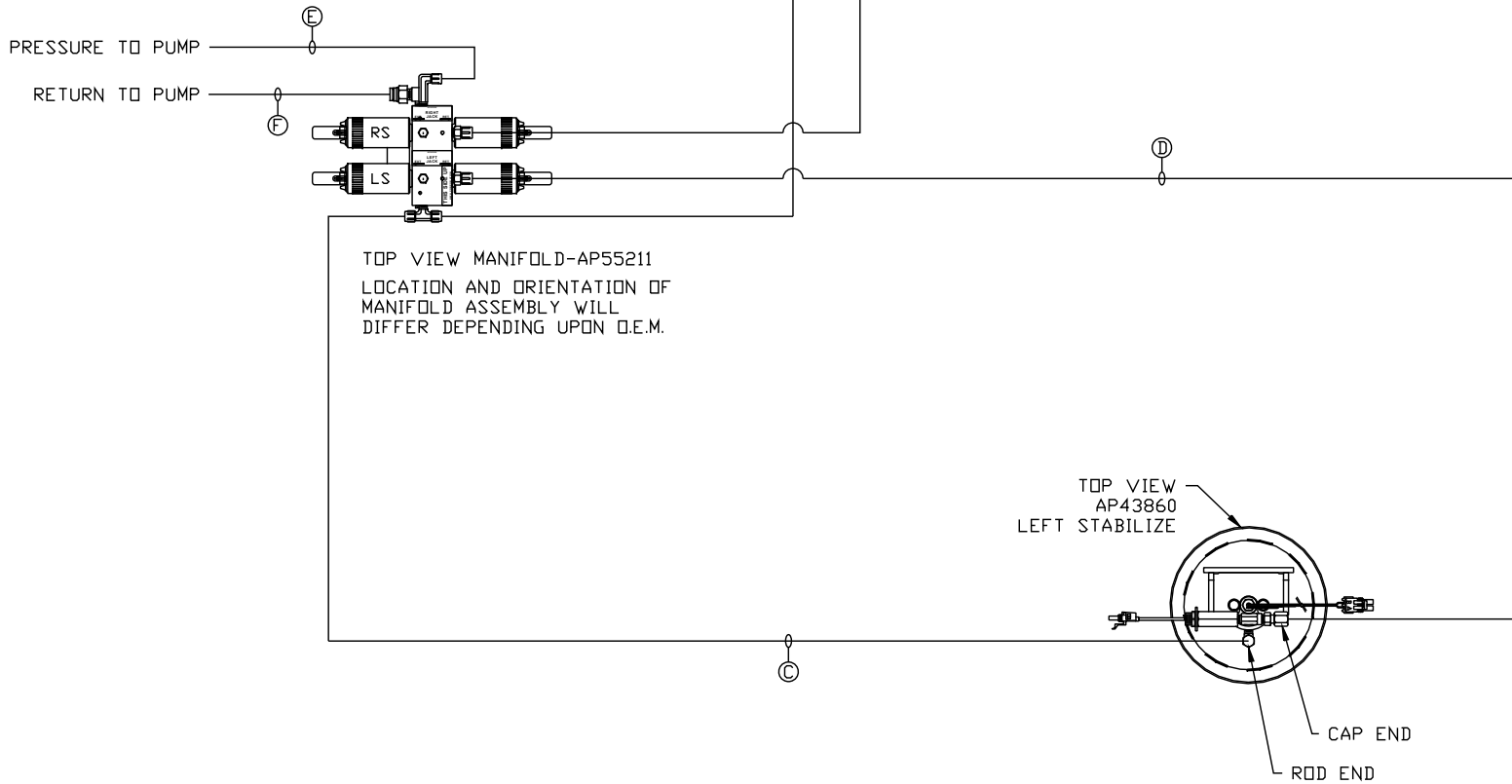
THE INFORMATION DISCLOSED ON THIS DRAWING IS CONFIDENTIAL AND MUST NOT BE DISCLOSED OR USED IN ANY MANNER WHICH WILL BE DETRIMENTAL TO THE HWH CORPORATION

HWH			I-80 EXIT 267 SOUTH RT 1 MOSCOW, IOWA 52760	
SCALE 1:6	DATE 10JUN15	DRAWN BY .		
HYD CONN DIAGRAM				
PLAYMOR TRAILER				DRAWING NUMBER MP70887 A/B

ORIENTATION

← FRONT

- Ⓐ AP3314 HOSE ASSY 04 × 48" - RS ROD END
- Ⓑ AP17475 HOSE ASSY 05 × 48" - RS CAP END
- Ⓒ AP3314 HOSE ASSY 04 × 48" - LS ROD END
- Ⓓ AP17475 HOSE ASSY 05 × 48" - LS CAP END
- Ⓔ AP7178 HOSE ASSY 04 × 504" - PRESSURE
- Ⓕ M402375 3/8" TUBING × 42' - RETURN



NOTE: INSTALLATION MUST CONFORM TO GOOD SHOP PRACTICES, SAE STANDARDS, RVIA STANDARDS, AND OTHER APPLICABLE STANDARDS.

MP70887 B/B
10JUN15