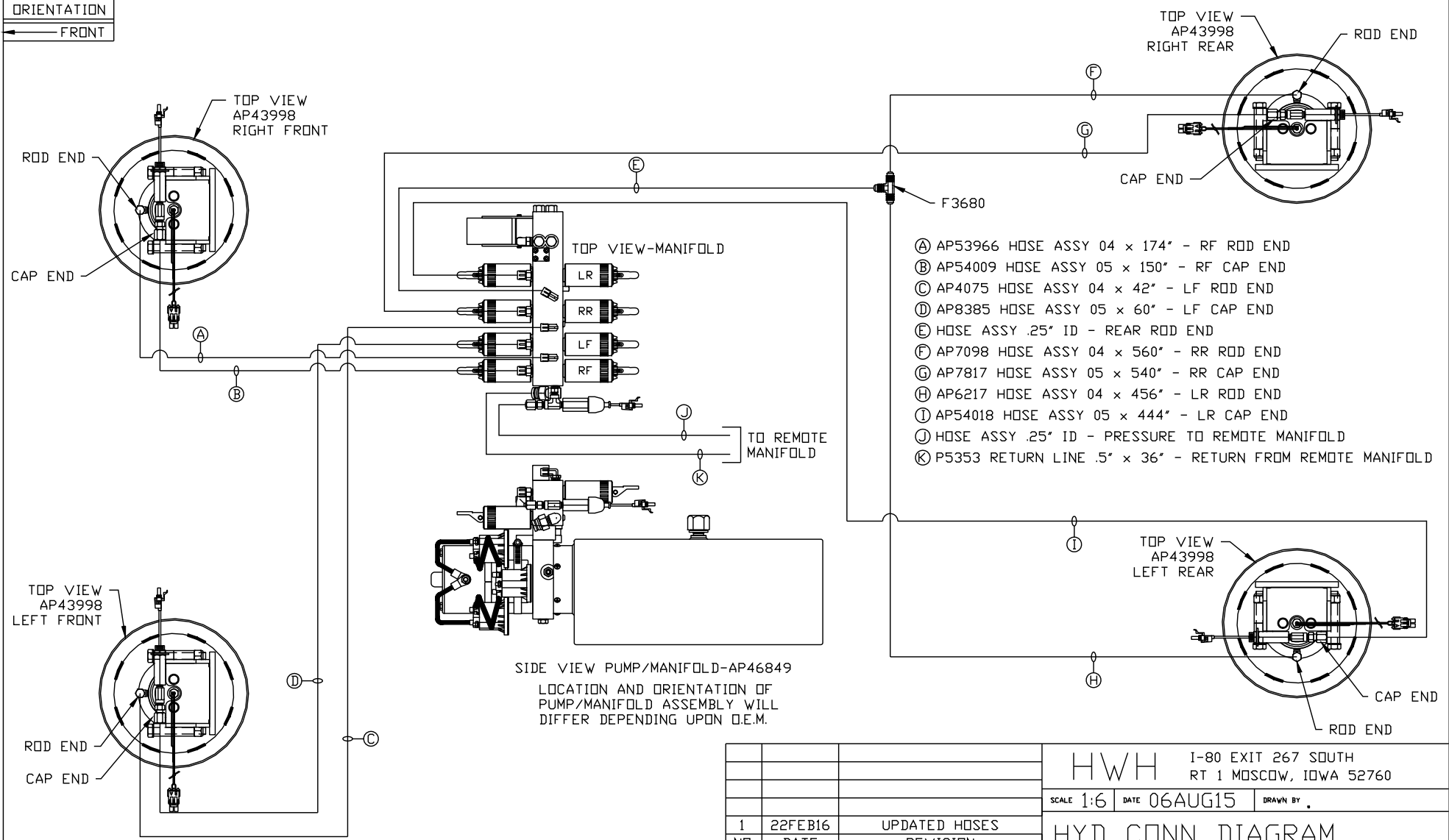


ORIENTATION
← FRONT



NOTE: INSTALLATION MUST CONFORM TO GOOD SHOP PRACTICES, SAE STANDARDS, RVIA STANDARDS, AND OTHER APPLICABLE STANDARDS.

LEVELING SYSTEM: AP55616

1	22FEB16	UPDATED HOSES
NO.	DATE	REVISION

THE INFORMATION DISCLOSED ON THIS DRAWING IS CONFIDENTIAL AND MUST NOT BE DISCLOSED OR USED IN ANY MANNER WHICH WILL BE DETRIMENTAL TO THE HWH CORPORATION

HWH I-80 EXIT 267 SOUTH
RT 1 MOSCOW, IOWA 52760

SCALE 1:6 DATE 06AUG15 DRAWN BY .

HYD CONN DIAGRAM

GOLD RUSH, INC. DRAWING NUMBER MP70899 A/B

Ⓐ AP4162 HOSE ASSY 04 × 192"
ROD END - ALWAYS PRESSURIZED

Ⓑ AP4162 HOSE ASSY 04 × 192"
CAP END

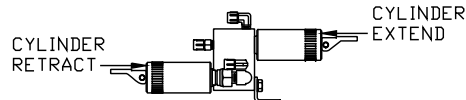
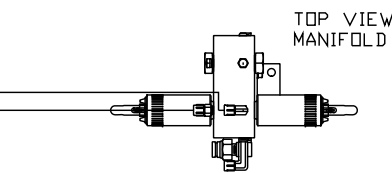
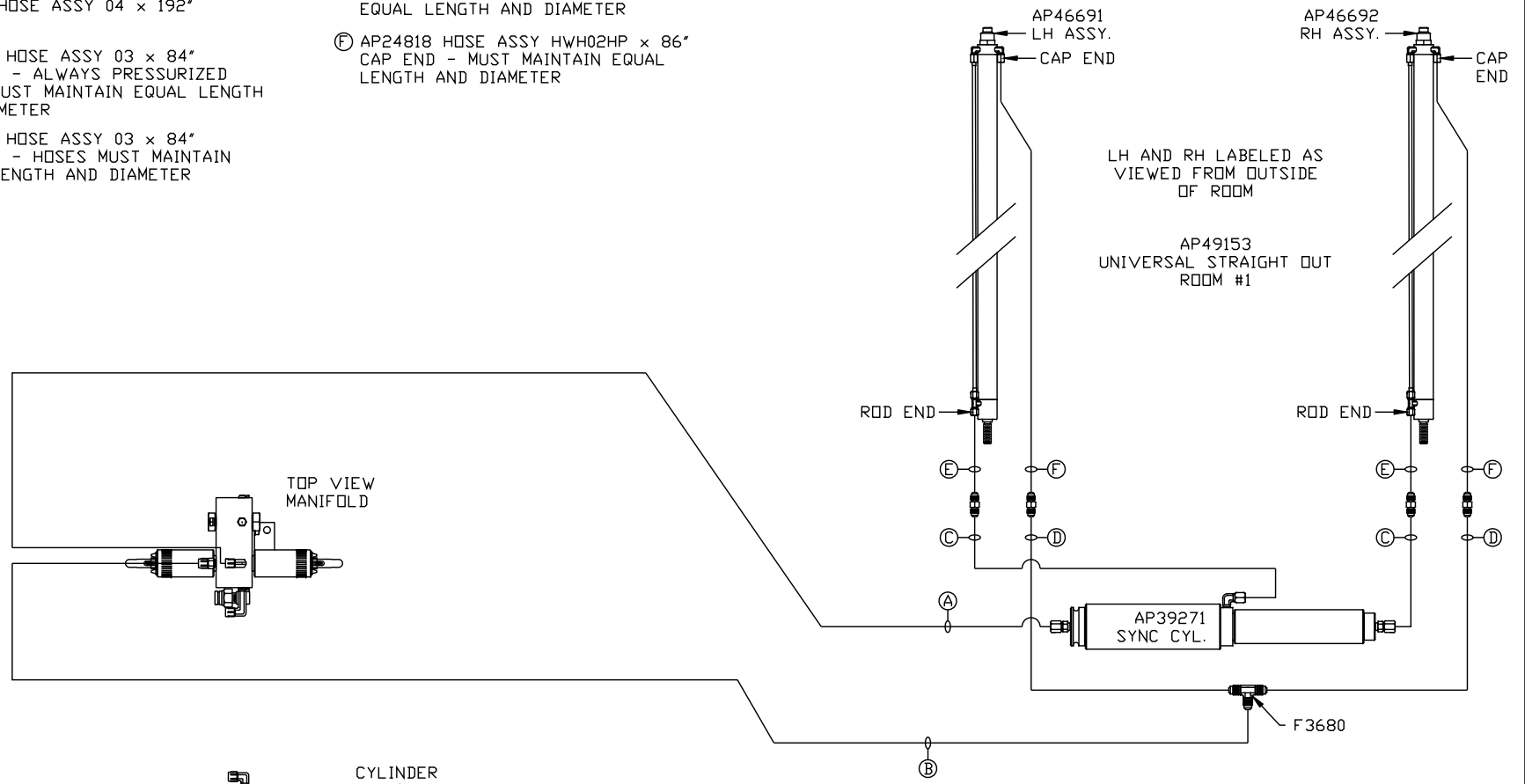
Ⓒ AP50671 HOSE ASSY 03 × 84"
ROD END - ALWAYS PRESSURIZED
HOSES MUST MAINTAIN EQUAL LENGTH
AND DIAMETER

Ⓓ AP50671 HOSE ASSY 03 × 84"
CAP END - HOSES MUST MAINTAIN
EQUAL LENGTH AND DIAMETER

Ⓔ AP24632 HOSE ASSY HWH02HP × 48"
ROD END - ALWAYS PRESSURIZED -
MUST BE HIGH PRESSURE HOSES OF
EQUAL LENGTH AND DIAMETER

Ⓕ AP24818 HOSE ASSY HWH02HP × 86"
CAP END - MUST MAINTAIN EQUAL
LENGTH AND DIAMETER

NOTE: HOSES Ⓔ AND Ⓕ ARE INCLUDED
WITH THE ROOM EXTENSION MECHANISM



SIDE VIEW MANIFOLD-AP46662
LOCATION AND ORIENTATION OF
MANIFOLD ASSEMBLY WILL
DIFFER DEPENDING UPON O.E.M.

NOTE: INSTALLATION MUST CONFORM TO GOOD SHOP PRACTICES, SAE
STANDARDS, RVIA STANDARDS, AND OTHER APPLICABLE STANDARDS.

MP70899 B/B
22FEB16