

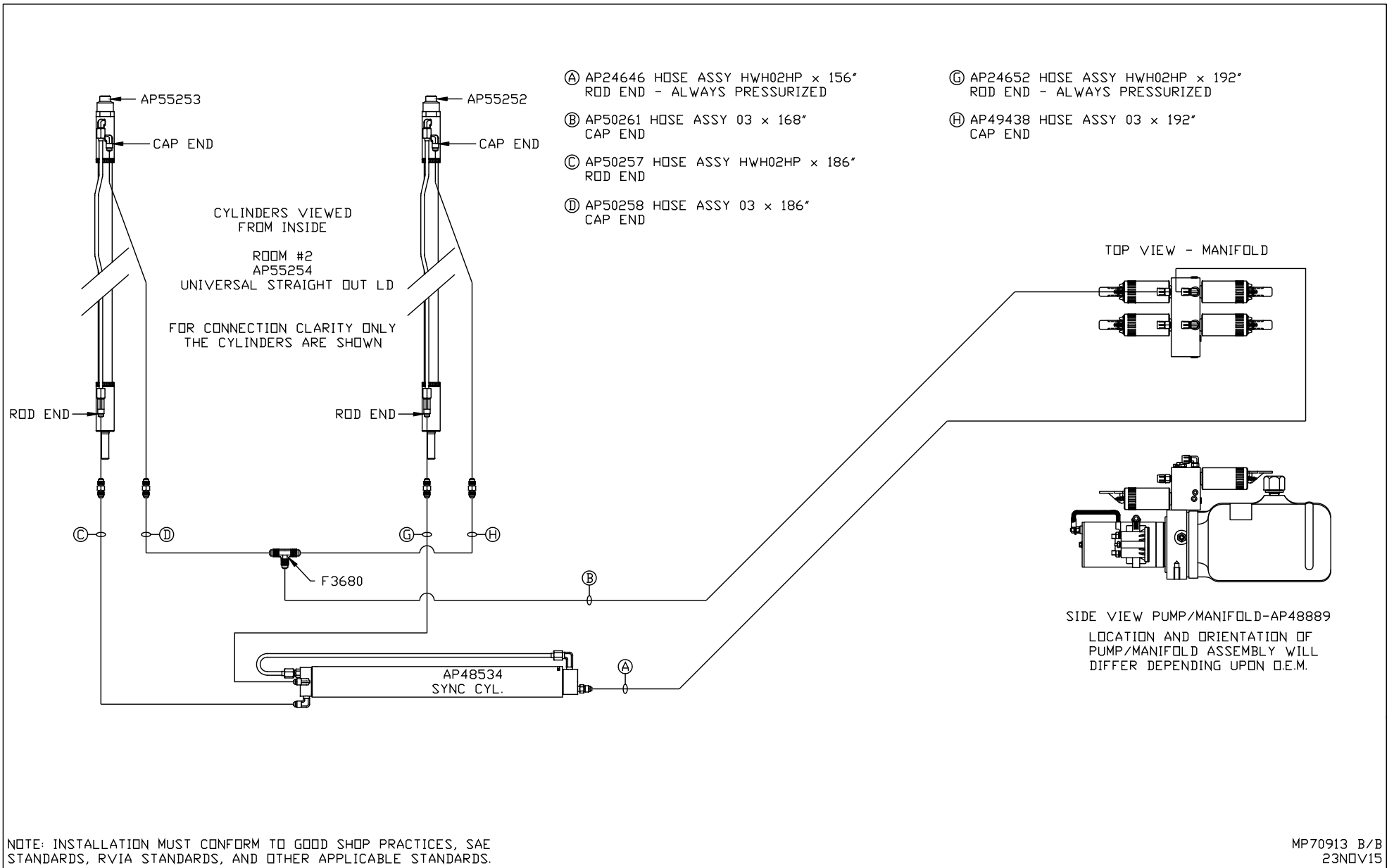
NOTE: INSTALLATION MUST CONFORM TO GOOD SHOP PRACTICES, SAE STANDARDS, RVIA STANDARDS, AND OTHER APPLICABLE STANDARDS.

LEVELING SYSTEM: AP48870
PUMP/HOSE/HARN KIT: AP48868

NO.	DATE	REVISION

THE INFORMATION DISCLOSED ON THIS DRAWING IS CONFIDENTIAL AND MUST NOT BE DISCLOSED OR USED IN ANY MANNER WHICH WILL BE DETRIMENTAL TO THE HWH CORPORATION

HWH			I-80 EXIT 267 SOUTH RT 1 MOSCOW, IOWA 52760		
SCALE 1:6	DATE 23NOV15	DRAWN BY .			
HYD CONN DIAGRAM					
TIFFIN				DRAWING NUMBER MP70913 A/B	



- Ⓐ AP24646 HOSE ASSY HWH02HP x 156"
ROD END - ALWAYS PRESSURIZED
- Ⓑ AP50261 HOSE ASSY 03 x 168"
CAP END
- Ⓒ AP50257 HOSE ASSY HWH02HP x 186"
ROD END
- Ⓓ AP50258 HOSE ASSY 03 x 186"
CAP END

- Ⓔ AP24652 HOSE ASSY HWH02HP x 192"
ROD END - ALWAYS PRESSURIZED
- Ⓕ AP49438 HOSE ASSY 03 x 192"
CAP END