

- Ⓐ AP5924 HOSE ASSY 04 x 228" - RF ROD END
- Ⓑ AP22078 HOSE ASSY 05 x 204" - RF CAP END
- Ⓒ AP2464 HOSE ASSY 04 x 324" - LF ROD END
- Ⓓ AP6638 HOSE ASSY 05 x 300" - LF CAP END
- Ⓔ AP7385 HOSE ASSY 04 x 252" - RR ROD END
- Ⓕ AP31034 HOSE ASSY 05 x 228" - RR CAP END
- Ⓖ AP2465 HOSE ASSY 04 x 348" - LR ROD END
- Ⓗ AP17476 HOSE ASSY 05 x 324" - LR CAP END

NOTE: INSTALLATION MUST CONFORM TO GOOD SHOP PRACTICES, SAE STANDARDS, RVIA STANDARDS, AND OTHER APPLICABLE STANDARDS.

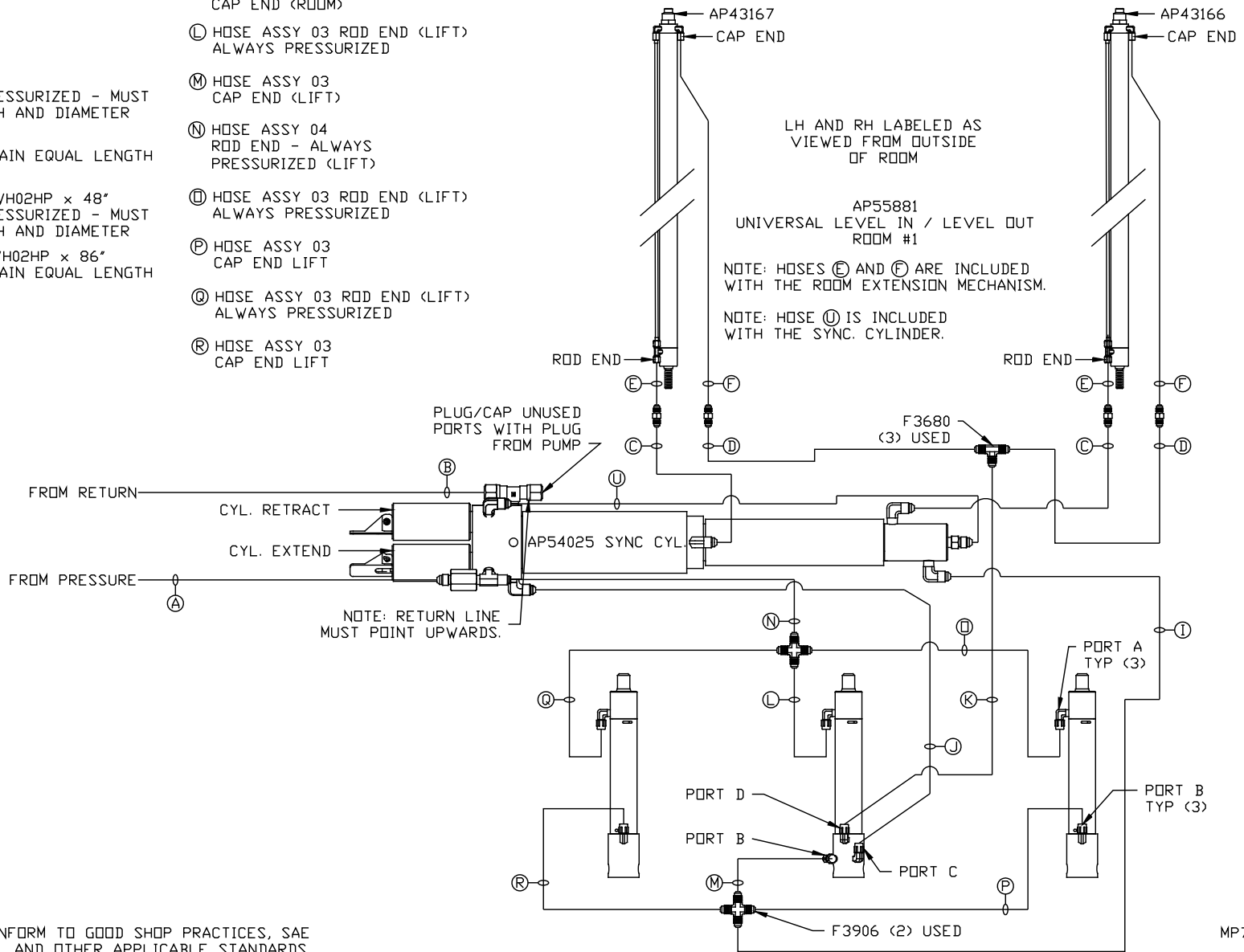
LEVELING SYSTEM: AP55877

△	12FEB16	CORRECTED ROD/CAP
NO.	DATE	REVISION
THE INFORMATION DISCLOSED ON THIS DRAWING IS CONFIDENTIAL AND MUST NOT BE DISCLOSED OR USED IN ANY MANNER WHICH WILL BE DETRIMENTAL TO THE HWH CORPORATION		

HWH			I-80 EXIT 267 SOUTH RT 1 MOSCOW, IOWA 52760	
SCALE 1:6	DATE 16DEC15	DRAWN BY .		
HYD CONN DIAGRAM				
ITB			DRAWING NUMBER MP70973 A/B	

- (A) HOSE ASSY 04
PRESSURE
- (B) .375" OD NYLON TUBING
RETURN
- (C) HOSE ASSY 03
ROD END - ALWAYS PRESSURIZED - MUST
MAINTAIN EQUAL LENGTH AND DIAMETER
- (D) HOSE ASSY 04
CAP END - MUST MAINTAIN EQUAL LENGTH
AND DIAMETER
- (E) AP24632 HOSE ASSY HWH02HP x 48"
ROD END - ALWAYS PRESSURIZED - MUST
MAINTAIN EQUAL LENGTH AND DIAMETER
- (F) AP24818 HOSE ASSY HWH02HP x 86"
CAP END - MUST MAINTAIN EQUAL LENGTH
AND DIAMETER
- (I) HOSE ASSY 04
CAP END (LIFT)
- (J) HOSE ASSY 03
CAP END (ROOM)

- (K) HOSE ASSY 03
CAP END (ROOM)
- (L) HOSE ASSY 03 ROD END (LIFT)
ALWAYS PRESSURIZED
- (M) HOSE ASSY 03
CAP END (LIFT)
- (N) HOSE ASSY 04
ROD END - ALWAYS
PRESSURIZED (LIFT)
- (O) HOSE ASSY 03 ROD END (LIFT)
ALWAYS PRESSURIZED
- (P) HOSE ASSY 03
CAP END LIFT
- (Q) HOSE ASSY 03 ROD END (LIFT)
ALWAYS PRESSURIZED
- (R) HOSE ASSY 03
CAP END LIFT



NOTE: INSTALLATION MUST CONFORM TO GOOD SHOP PRACTICES, SAE
STANDARDS, RVIA STANDARDS, AND OTHER APPLICABLE STANDARDS.

MP70973 B/B
16DEC15