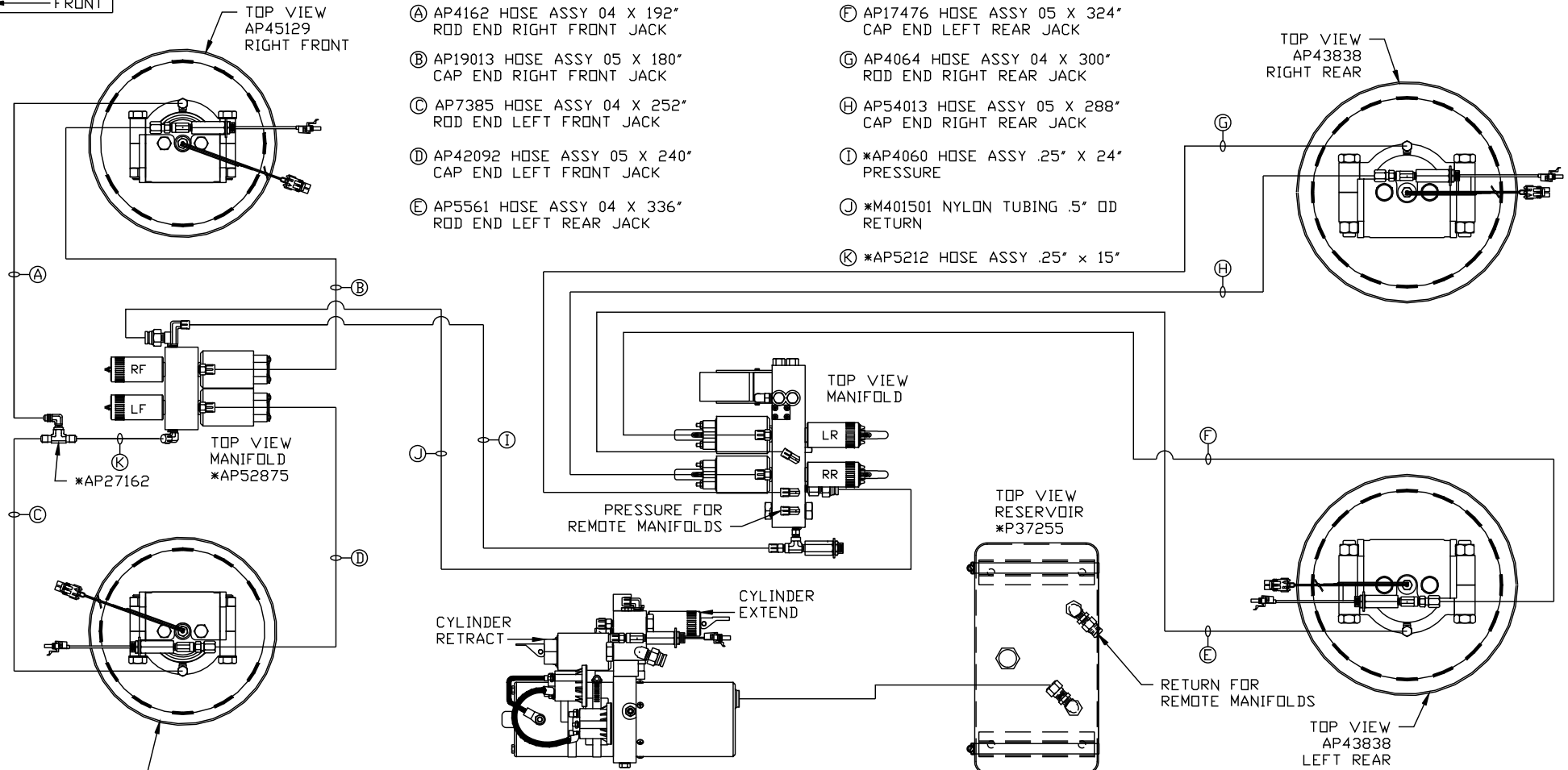


ORIENTATION
← FRONT



- (A) AP4162 HOSE ASSY 04 X 192" ROD END RIGHT FRONT JACK
- (B) AP19013 HOSE ASSY 05 X 180" CAP END RIGHT FRONT JACK
- (C) AP7385 HOSE ASSY 04 X 252" ROD END LEFT FRONT JACK
- (D) AP42092 HOSE ASSY 05 X 240" CAP END LEFT FRONT JACK
- (E) AP5561 HOSE ASSY 04 X 336" ROD END LEFT REAR JACK
- (F) AP17476 HOSE ASSY 05 X 324" CAP END LEFT REAR JACK
- (G) AP4064 HOSE ASSY 04 X 300" ROD END RIGHT REAR JACK
- (H) AP54013 HOSE ASSY 05 X 288" CAP END RIGHT REAR JACK
- (I) *AP4060 HOSE ASSY .25" X 24" PRESSURE
- (J) *M401501 NYLON TUBING .5" OD RETURN
- (K) *AP5212 HOSE ASSY .25" X 15"

SIDE VIEW OF PUMP/MANIFOLD--*AP52881
 LOCATION AND ORIENTATION OF PUMP/MANIFOLD ASSEMBLY WILL DIFFER DEPENDING UPON O.E.M.
 * NOTE: PART OF AP55057 POWER CONTROL

NO.	DATE	REVISION

HWH I-80 EXIT 267 SOUTH
 RT 1 MOSCOW, IOWA 52760
 SCALE 1:6 DATE 13APR16 DRAWN BY .

HYD CONN DIAGRAM

NOTE: INSTALLATION MUST CONFORM TO GOOD SHOP PRACTICES, SAE STANDARDS, RVIA STANDARDS, AND OTHER APPLICABLE STANDARDS.

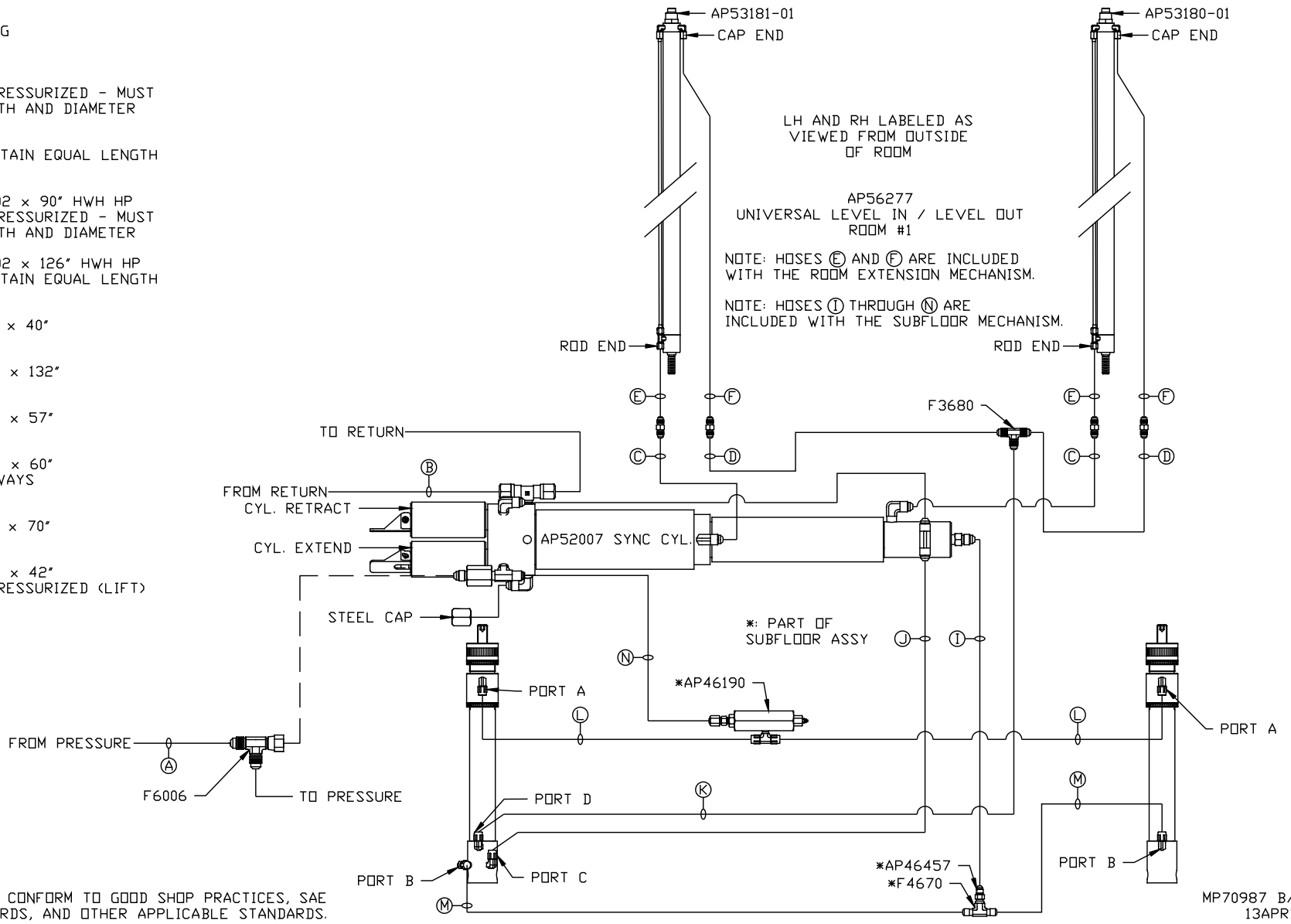
LEVELING SYSTEM: AP56488

THE INFORMATION DISCLOSED ON THIS DRAWING IS CONFIDENTIAL AND MUST NOT BE DISCLOSED OR USED IN ANY MANNER WHICH WILL BE DETRIMENTAL TO THE HWH CORPORATION

FARBER

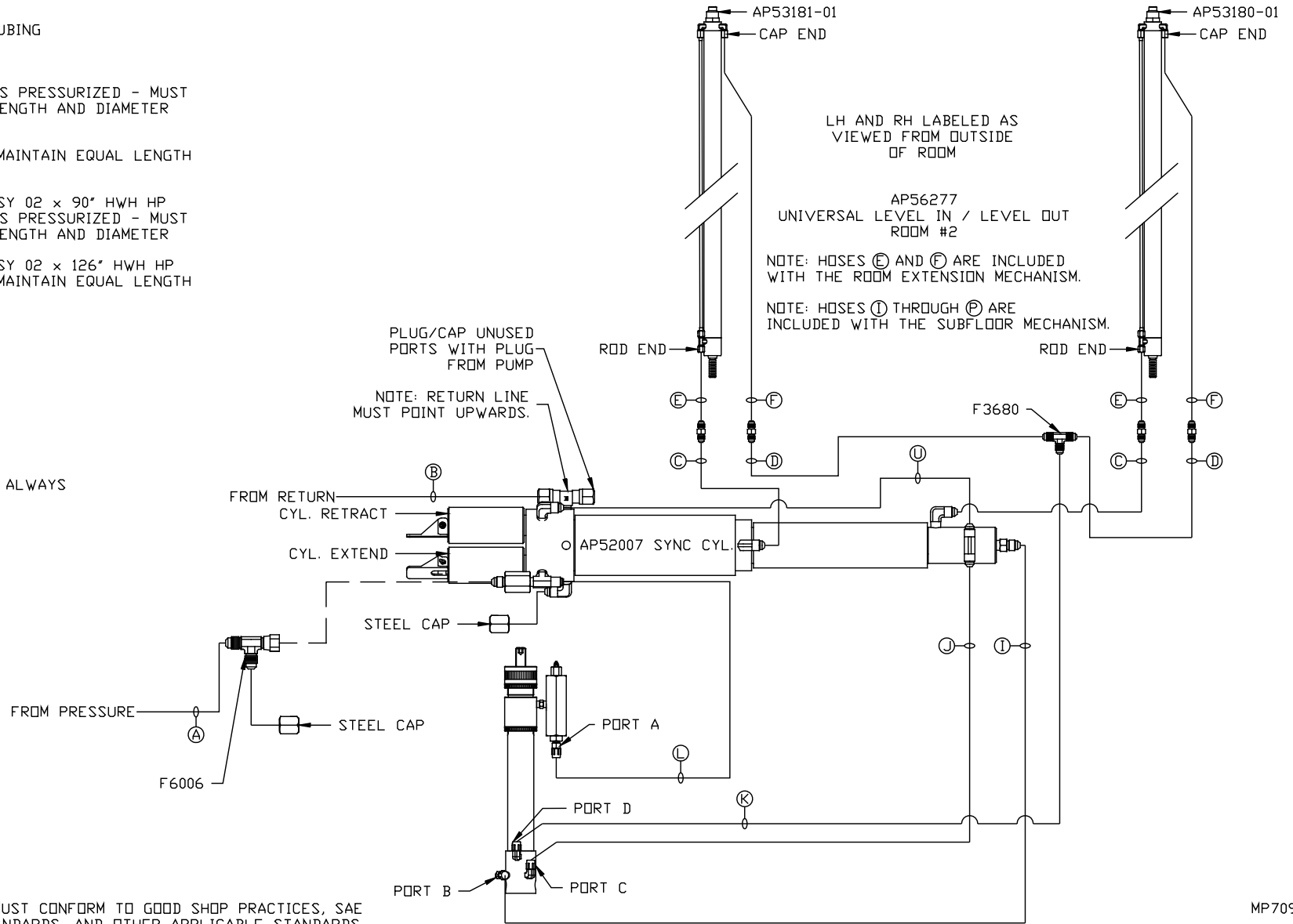
DRAWING NUMBER
 MP70987 A/C

- (A) HOSE ASSY 04
PRESSURE
- (B) .375" OD NYLON TUBING
RETURN
- (C) HOSE ASSY 03
ROD END - ALWAYS PRESSURIZED - MUST
MAINTAIN EQUAL LENGTH AND DIAMETER
- (D) HOSE ASSY 03
CAP END - MUST MAINTAIN EQUAL LENGTH
AND DIAMETER
- (E) AP24638 HOSE ASSY 02 x 90" HWH HP
ROD END - ALWAYS PRESSURIZED - MUST
MAINTAIN EQUAL LENGTH AND DIAMETER
- (F) AP24643 HOSE ASSY 02 x 126" HWH HP
CAP END - MUST MAINTAIN EQUAL LENGTH
AND DIAMETER
- (I) AP4218 HOSE ASSY 04 x 40"
CAP END (LIFT)
- (J) AP4062 HOSE ASSY 04 x 132"
CAP END (LIFT)
- (K) AP5350 HOSE ASSY 04 x 57"
CAP END (ROOM)
- (L) AP4073 HOSE ASSY 04 x 60"
ROD END (LIFT) - ALWAYS
PRESSURIZED
- (M) AP7177 HOSE ASSY 04 x 70"
CAP END (LIFT)
- (N) AP4075 HOSE ASSY 04 x 42"
ROD END - ALWAYS PRESSURIZED (LIFT)



NOTE: INSTALLATION MUST CONFORM TO GOOD SHOP PRACTICES, SAE STANDARDS, RVIA STANDARDS, AND OTHER APPLICABLE STANDARDS.

- Ⓐ HOSE ASSY 04
PRESSURE
- Ⓑ .375" OD NYLON TUBING
RETURN
- Ⓒ HOSE ASSY 03
ROD END - ALWAYS PRESSURIZED - MUST
MAINTAIN EQUAL LENGTH AND DIAMETER
- Ⓓ HOSE ASSY 03
CAP END - MUST MAINTAIN EQUAL LENGTH
AND DIAMETER
- Ⓔ AP24638 HOSE ASSY 02 x 90" HWH HP
ROD END - ALWAYS PRESSURIZED - MUST
MAINTAIN EQUAL LENGTH AND DIAMETER
- Ⓕ AP24643 HOSE ASSY 02 x 126" HWH HP
CAP END - MUST MAINTAIN EQUAL LENGTH
AND DIAMETER
- Ⓖ HOSE ASSY 04
CAP END (LIFT)
- Ⓙ HOSE ASSY 04
CAP END (LIFT)
- Ⓚ HOSE ASSY 04
CAP END (ROOM)
- Ⓛ HOSE ASSY 04
ROD END (LIFT) - ALWAYS
PRESSURIZED



NOTE: INSTALLATION MUST CONFORM TO GOOD SHOP PRACTICES, SAE STANDARDS, RVIA STANDARDS, AND OTHER APPLICABLE STANDARDS.

MP70987 C/C
13APR16