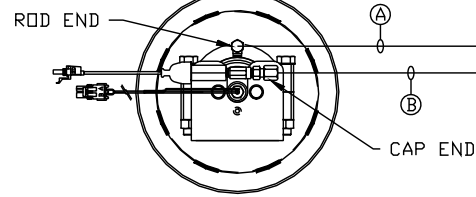
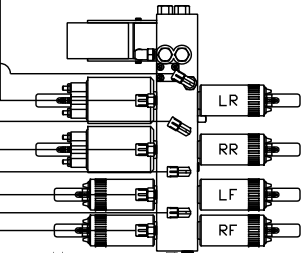


ORIENTATION
← FRONT

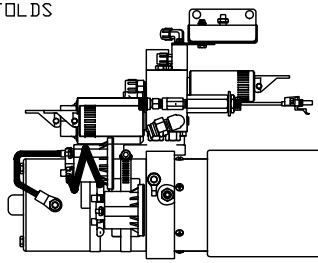
TOP VIEW
AP46030
RIGHT FRONT



TOP VIEW-MANIFOLD
(MIDM NOT SHOWN)

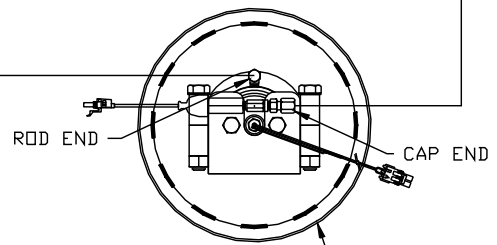


RETURN FROM
REMOTE MANIFOLDS
PRESSURE TO
REMOTE MANIFOLDS



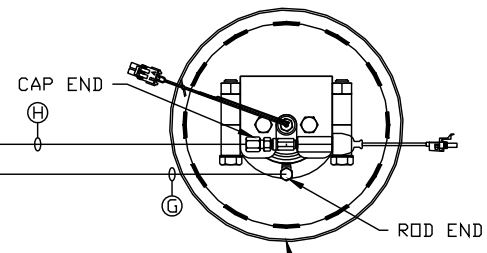
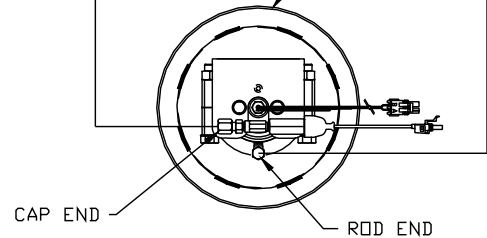
SIDE VIEW PUMP/MANIFOLD-AP55098

LOCATION AND ORIENTATION OF
PUMP/MANIFOLD ASSEMBLY WILL
DIFFER DEPENDING UPON O.E.M.



TOP VIEW
AP45129
RIGHT REAR

TOP VIEW
AP46030
LEFT FRONT



TOP VIEW
AP45129
LEFT REAR

- Ⓐ AP5965 HOSE ASSY 04 x 180" - RF ROD END
- Ⓑ AP19013 HOSE ASSY 05 x 180" - RF CAP END
- Ⓒ AP5352 HOSE ASSY 04 x 96" - LF ROD END
- Ⓓ AP8383 HOSE ASSY 05 x 96" - LF CAP END
- Ⓔ AP4063 HOSE ASSY 04 x 288" - RR ROD END
- Ⓕ AP54013 HOSE ASSY 05 x 288" - RR CAP END
- Ⓖ AP6115 HOSE ASSY 04 x 168" - LR ROD END
- Ⓗ AP23233 HOSE ASSY 05 x 168" - LR CAP END

NOTE: INSTALLATION MUST CONFORM TO GOOD SHOP PRACTICES, SAE STANDARDS, RVIA STANDARDS, AND OTHER APPLICABLE STANDARDS.

LEVELING SYSTEM: AP56625

NO.	DATE	REVISION
THE INFORMATION DISCLOSED ON THIS DRAWING IS CONFIDENTIAL AND MUST NOT BE DISCLOSED OR USED IN ANY MANNER WHICH WILL BE DETRIMENTAL TO THE HWH CORPORATION		

HWH 1-80 EXIT 267 SOUTH
RT 1 MOSCOW, IOWA 52760

SCALE 1:6 DATE 01JUN16 DRAWN BY .

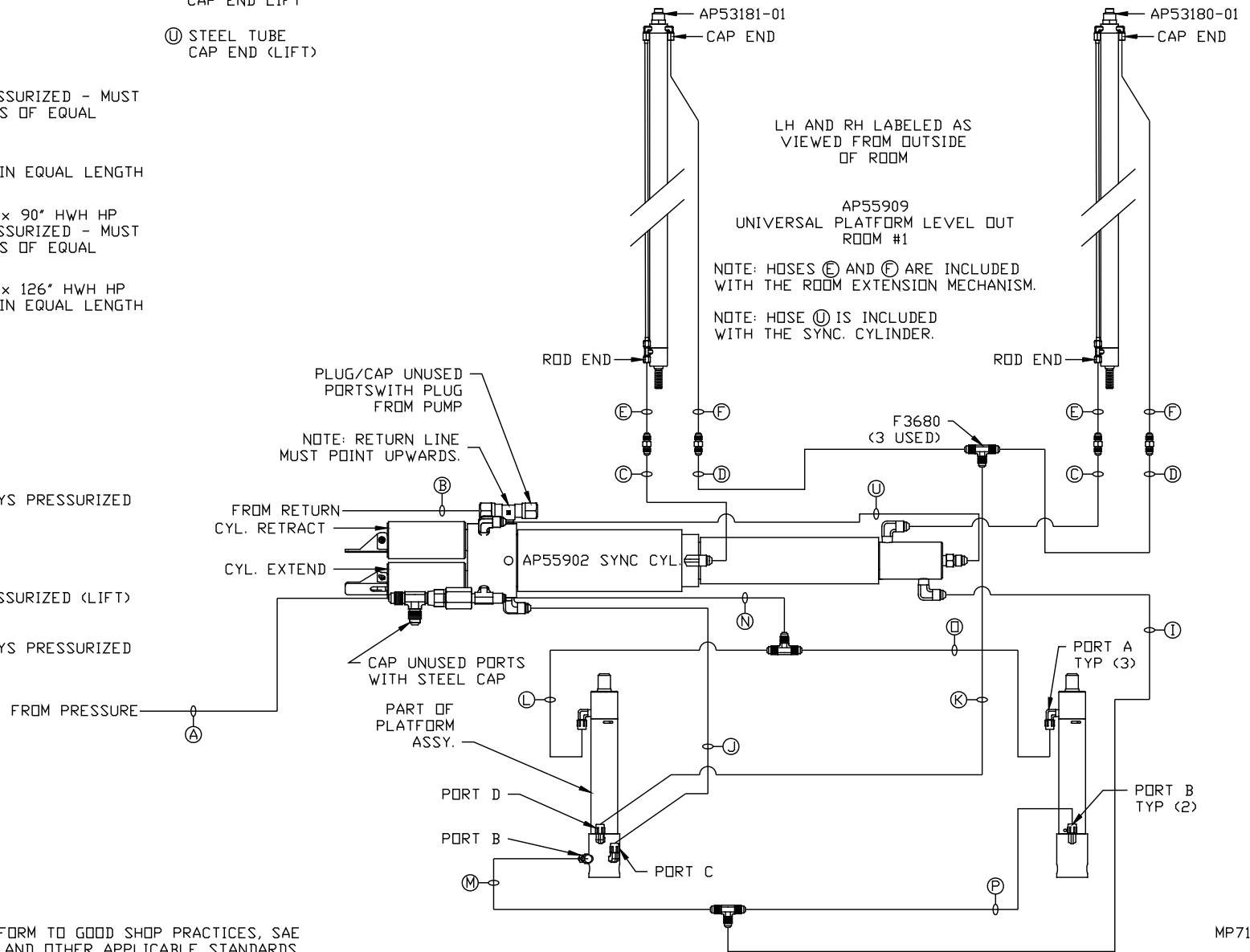
HYD CONN DIAGRAM

FARBER

DRAWING NUMBER
MP71002 A/C

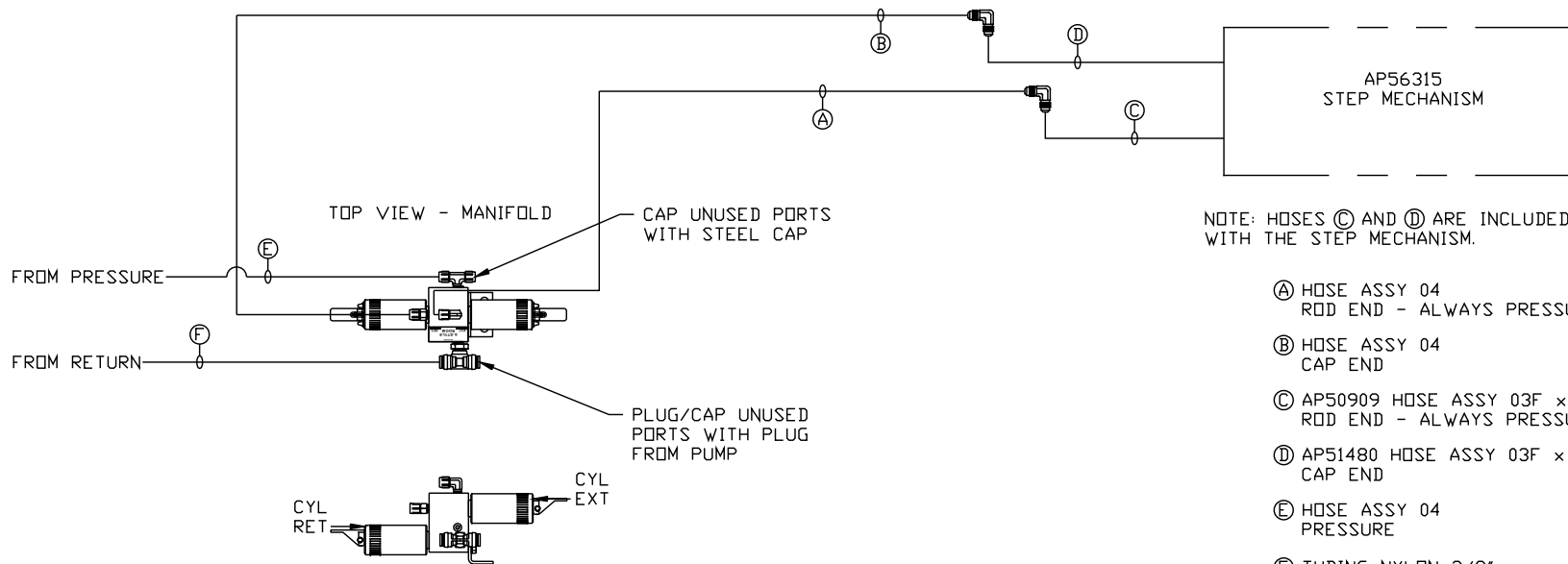
- (A) HOSE ASSY 04
PRESSURE
- (B) .375" OD NYLON TUBING
RETURN
- (C) HOSE ASSY 03
ROD END - ALWAYS PRESSURIZED - MUST
BE HIGH PRESSURE HOSES OF EQUAL
LENGTH AND DIAMETER
- (D) HOSE ASSY 04
CAP END - MUST MAINTAIN EQUAL LENGTH
AND DIAMETER
- (E) AP24638 HOSE ASSY 02 x 90" HWH HP
ROD END - ALWAYS PRESSURIZED - MUST
BE HIGH PRESSURE HOSES OF EQUAL
LENGTH AND DIAMETER
- (F) AP24643 HOSE ASSY 02 x 126" HWH HP
CAP END - MUST MAINTAIN EQUAL LENGTH
AND DIAMETER
- (I) HOSE ASSY 04
CAP END (LIFT)
- (J) HOSE ASSY 03
CAP END (ROOM)
- (K) HOSE ASSY 03
CAP END (ROOM)
- (L) HOSE ASSY 03
ROD END (LIFT) - ALWAYS PRESSURIZED
- (M) HOSE ASSY 03
CAP END (LIFT)
- (N) HOSE ASSY 04
ROD END - ALWAYS PRESSURIZED (LIFT)
- (O) HOSE ASSY 03
ROD END (LIFT) - ALWAYS PRESSURIZED

- (P) HOSE ASSY 03
CAP END LIFT
- (U) STEEL TUBE
CAP END (LIFT)



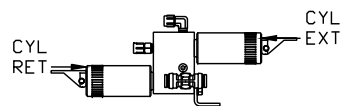
NOTE: INSTALLATION MUST CONFORM TO GOOD SHOP PRACTICES, SAE STANDARDS, RVIA STANDARDS, AND OTHER APPLICABLE STANDARDS.

MP71002 B/C
01JUN16



NOTE: HOSES C AND D ARE INCLUDED WITH THE STEP MECHANISM.

- A HOSE ASSY 04
ROD END - ALWAYS PRESSURIZED
- B HOSE ASSY 04
CAP END
- C AP50909 HOSE ASSY 03F x 72"
ROD END - ALWAYS PRESSURIZED
- D AP51480 HOSE ASSY 03F x 66"
CAP END
- E HOSE ASSY 04
PRESSURE
- F TUBING NYLON 3/8"
RETURN



SIDE VIEW MANIFOLD-AP53341
LOCATION AND ORIENTATION OF
PUMP/MANIFOLD ASSEMBLY WILL
DIFFER DEPENDING UPON O.E.M.

NOTE: INSTALLATION MUST CONFORM TO GOOD SHOP PRACTICES, SAE STANDARDS, RVIA STANDARDS, AND OTHER APPLICABLE STANDARDS.

MP71002 C/C
01JUN16