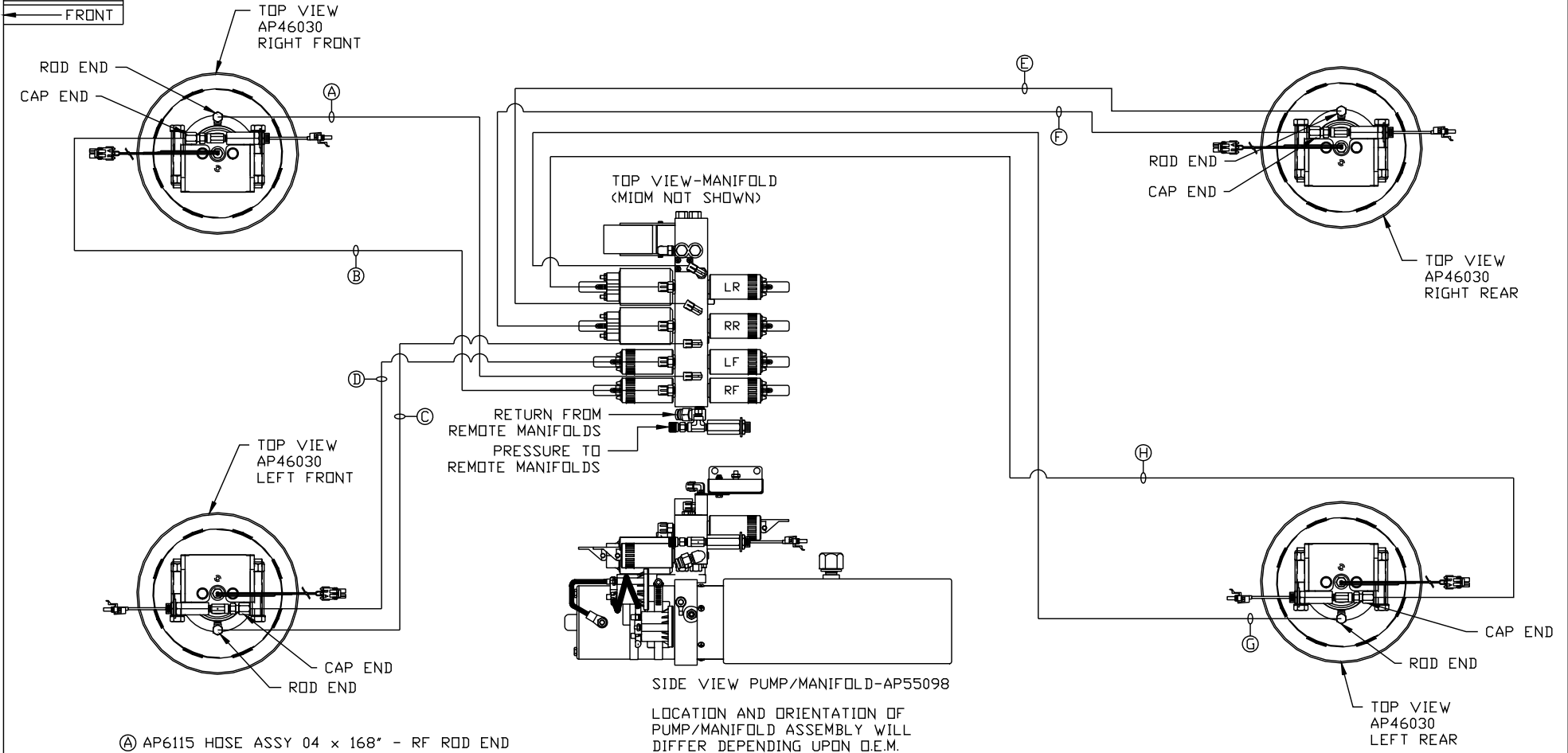


ORIENTATION

← FRONT



- Ⓐ AP6115 HOSE ASSY 04 x 168" - RF ROD END
- Ⓑ AP8382 HOSE ASSY 05 x 144" - RF CAP END
- Ⓒ AP5352 HOSE ASSY 04 x 96" - LF ROD END
- Ⓓ AP42057 HOSE ASSY 05 x 72" - LF CAP END
- Ⓔ AP5561 HOSE ASSY 04 x 336" - RR ROD END
- Ⓕ AP54014 HOSE ASSY 05 x 312" - RR CAP END
- Ⓖ AP6216 HOSE ASSY 04 x 264" - LR ROD END
- Ⓗ AP42092 HOSE ASSY 05 x 240" - LR CAP END

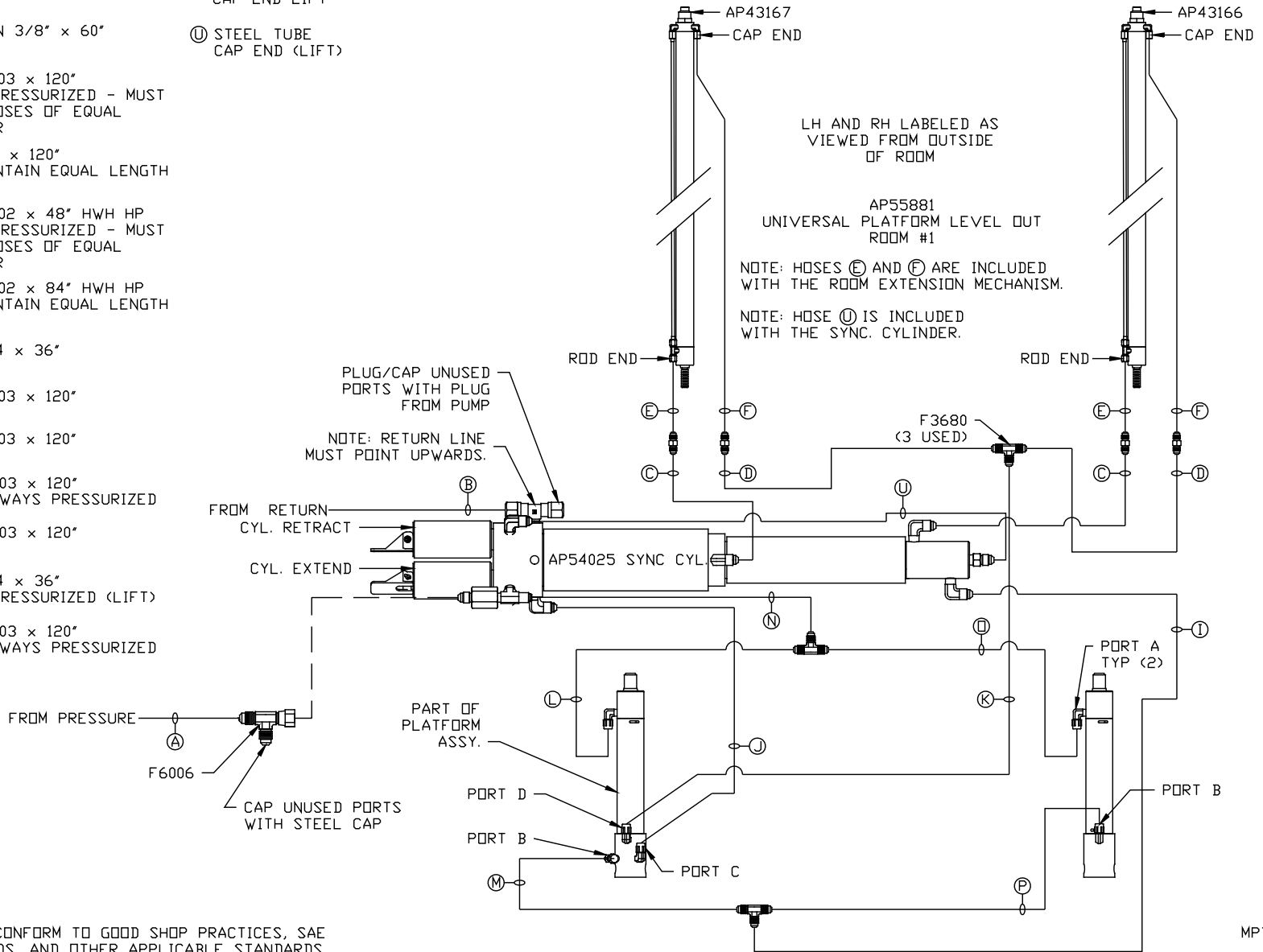
NOTE: INSTALLATION MUST CONFORM TO GOOD SHOP PRACTICES, SAE STANDARDS, RVIA STANDARDS, AND OTHER APPLICABLE STANDARDS.

LEVELING SYSTEM: AP56980

		HWH		I-80 EXIT 267 SOUTH	
				RT 1 MOSCOW, IOWA 52760	
		SCALE 1:6	DATE 25OCT16	DRAWN BY .	
		HYD CONN DIAGRAM			
NO.	DATE	REVISION			
		THE INFORMATION DISCLOSED ON THIS DRAWING IS CONFIDENTIAL AND MUST NOT BE DISCLOSED OR USED IN ANY MANNER WHICH WILL BE DETRIMENTAL TO THE HWH CORPORATION			
TRIVAN			DRAWING NUMBER MP71027 A/B		

- Ⓐ AP3314 HOSE ASSY 04 x 48" PRESSURE
- Ⓑ P53884 TUBING NYLON 3/8" x 60" RETURN
- Ⓒ AP49245 HOSE ASSY 03 x 120" ROD END - ALWAYS PRESSURIZED - MUST BE HIGH PRESSURE HOSES OF EQUAL LENGTH AND DIAMETER
- Ⓓ AP4161 HOSE ASSY 04 x 120" CAP END - MUST MAINTAIN EQUAL LENGTH AND DIAMETER
- Ⓔ AP24632 HOSE ASSY 02 x 48" HWH HP ROD END - ALWAYS PRESSURIZED - MUST BE HIGH PRESSURE HOSES OF EQUAL LENGTH AND DIAMETER
- Ⓕ AP24636 HOSE ASSY 02 x 84" HWH HP CAP END - MUST MAINTAIN EQUAL LENGTH AND DIAMETER
- Ⓖ AP4059 HOSE ASSY 04 x 36" CAP END (LIFT)
- Ⓙ AP49245 HOSE ASSY 03 x 120" CAP END (ROOM)
- Ⓚ AP49245 HOSE ASSY 03 x 120" CAP END (ROOM)
- Ⓛ AP49245 HOSE ASSY 03 x 120" ROD END (LIFT) - ALWAYS PRESSURIZED
- Ⓜ AP49245 HOSE ASSY 03 x 120" CAP END (LIFT)
- Ⓝ AP4059 HOSE ASSY 04 x 36" ROD END - ALWAYS PRESSURIZED (LIFT)
- Ⓟ AP49245 HOSE ASSY 03 x 120" ROD END (LIFT) - ALWAYS PRESSURIZED

- Ⓠ AP49245 HOSE ASSY 03 x 120" CAP END LIFT
- Ⓡ AP56983 HOSE KIT 1 ROOM
- Ⓢ STEEL TUBE CAP END (LIFT)



NOTE: INSTALLATION MUST CONFORM TO GOOD SHOP PRACTICES, SAE STANDARDS, RVIA STANDARDS, AND OTHER APPLICABLE STANDARDS.

MP71027 B/B  
25OCT16