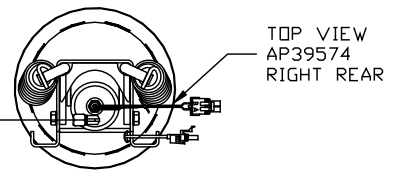
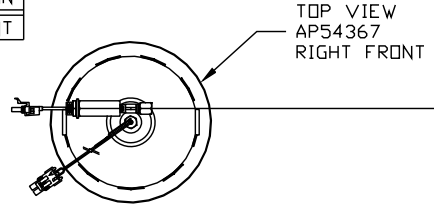
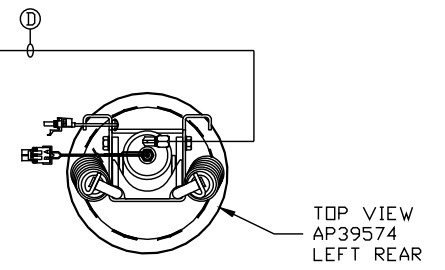
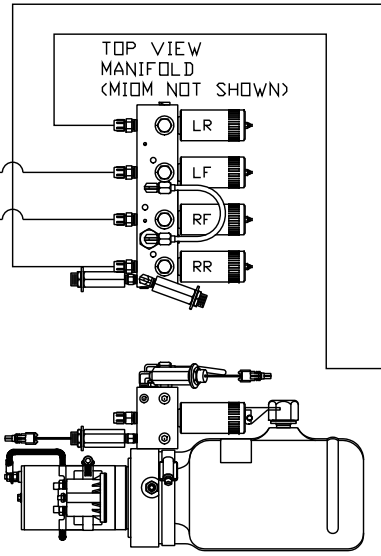
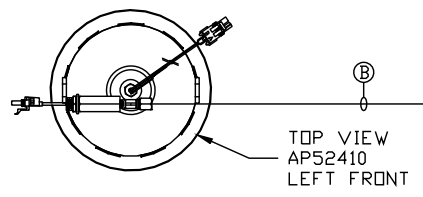


ORIENTATION  
← FRONT



- Ⓐ AP6115 HOSE ASSY 04 x 168"
- Ⓑ AP4061 HOSE ASSY 04 x 216"
- Ⓒ AP4061 HOSE ASSY 04 x 216"
- Ⓓ AP6115 HOSE ASSY 04 x 168"

CROSS TIE REQUIRED  
FOR FRONT AND REAR JACKS.



LOCATION AND ORIENTATION OF  
PUMP/MANIFOLD ASSEMBLY WILL  
DIFFER DEPENDING UPON O.E.M.

NOTE: INSTALLATION MUST CONFORM TO GOOD SHOP PRACTICES, SAE STANDARDS, RVIA STANDARDS, AND OTHER APPLICABLE STANDARDS.

LEVELING SYSTEM: AP57512

NO.	DATE	REVISION

THE INFORMATION DISCLOSED ON THIS DRAWING IS CONFIDENTIAL AND MUST NOT BE DISCLOSED OR USED IN ANY MANNER WHICH WILL BE DETRIMENTAL TO THE HWH CORPORATION

HWH			I-80 EXIT 267 SOUTH RT 1 MOSCOW, IOWA 52760		
SCALE 1:6	DATE 21FEB17	DRAWN BY .			
HYD CONN DIAGRAM					
GENERIC				DRAWING NUMBER MP71087	