

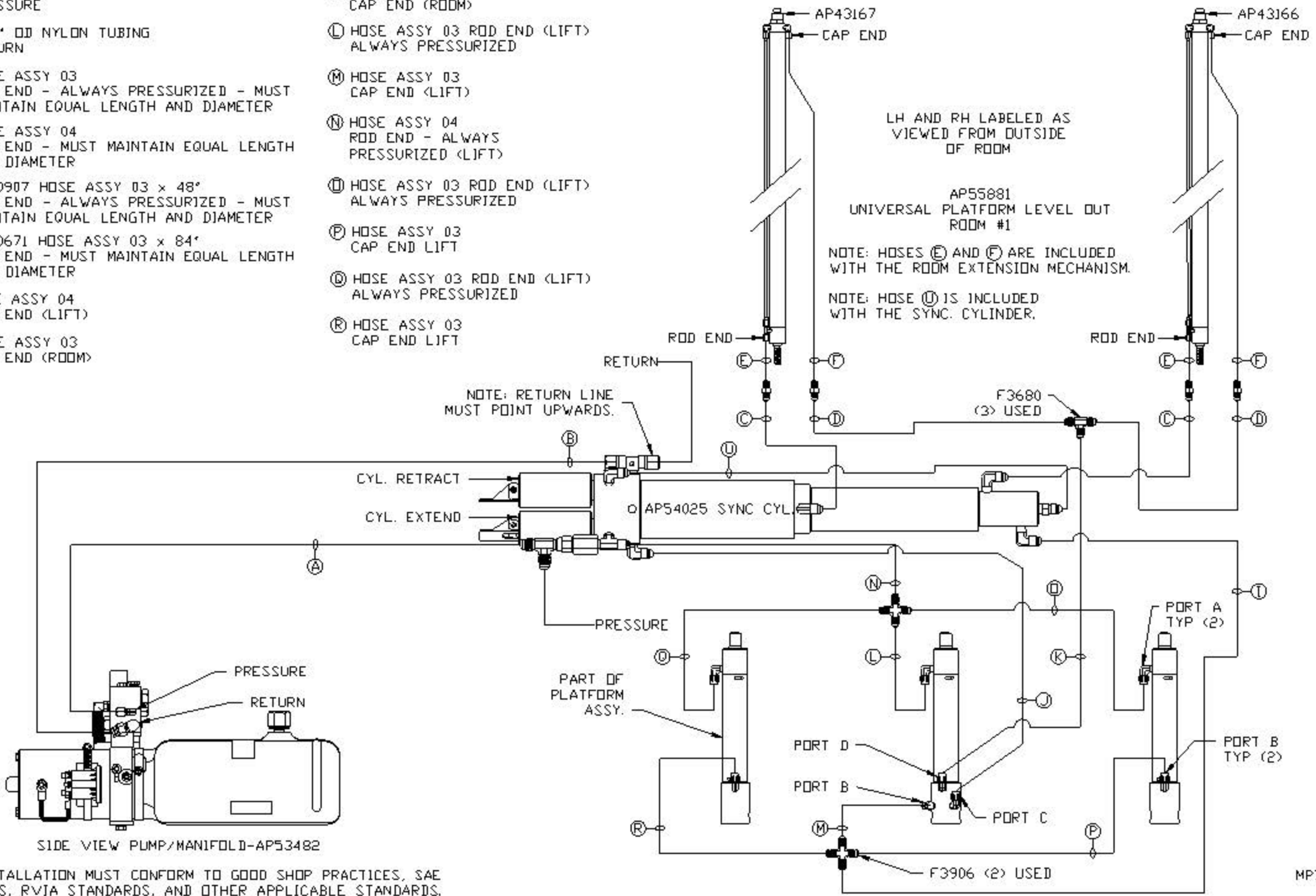
THIS PAGE INTENTIONALLY LEFT BLANK

NOTE: INSTALLATION MUST CONFORM TO GOOD SHOP PRACTICES, SAE STANDARDS, RVIA STANDARDS, AND OTHER APPLICABLE STANDARDS.

			HWH I-80 EXIT 267 SOUTH RT 1 MOSCOW, IOWA 52760		
			SCALE 1:6	DATE 16MAY19	DRAWN BY .
			HYD CONN DIAGRAM		
NO.	DATE	REVISION	PK VAN BODIES		
THE INFORMATION DISCLOSED ON THIS DRAWING IS CONFIDENTIAL AND MUST NOT BE DISCLOSED OR USED IN ANY MANNER WHICH WILL BE DETRIMENTAL TO THE HWH CORPORATION			DRAWING NUMBER MP71222 A/D		

- (A) HOSE ASSY 04 PRESSURE
- (B) .375" OD NYLON TUBING RETURN
- (C) HOSE ASSY 03 ROD END - ALWAYS PRESSURIZED - MUST MAINTAIN EQUAL LENGTH AND DIAMETER
- (D) HOSE ASSY 04 CAP END - MUST MAINTAIN EQUAL LENGTH AND DIAMETER
- (E) AP50907 HOSE ASSY 03 x 48" ROD END - ALWAYS PRESSURIZED - MUST MAINTAIN EQUAL LENGTH AND DIAMETER
- (F) AP50671 HOSE ASSY 03 x 84" CAP END - MUST MAINTAIN EQUAL LENGTH AND DIAMETER
- (I) HOSE ASSY 04 CAP END (LIFT)
- (J) HOSE ASSY 03 CAP END (ROOM)

- (K) HOSE ASSY 03 CAP END (ROOM)
- (L) HOSE ASSY 03 ROD END (LIFT) ALWAYS PRESSURIZED
- (M) HOSE ASSY 03 CAP END (LIFT)
- (N) HOSE ASSY 04 ROD END - ALWAYS PRESSURIZED (LIFT)
- (O) HOSE ASSY 03 ROD END (LIFT) ALWAYS PRESSURIZED
- (P) HOSE ASSY 03 CAP END LIFT
- (Q) HOSE ASSY 03 ROD END (LIFT) ALWAYS PRESSURIZED
- (R) HOSE ASSY 03 CAP END LIFT



SIDE VIEW PUMP/MANIFOLD-AP53482

NOTE: INSTALLATION MUST CONFORM TO GOOD SHOP PRACTICES, SAE STANDARDS, RVIA STANDARDS, AND OTHER APPLICABLE STANDARDS.

(A) HOSE ASSY 04
PRESSURE

(B) .375" OD NYLON TUBING
RETURN

(C) HOSE ASSY 03
ROD END - ALWAYS PRESSURIZED - MUST
MAINTAIN EQUAL LENGTH AND DIAMETER

(D) HOSE ASSY 04
CAP END - MUST MAINTAIN EQUAL LENGTH
AND DIAMETER

(E) AP50907 HOSE ASSY 03 x 48"
ROD END - ALWAYS PRESSURIZED - MUST
MAINTAIN EQUAL LENGTH AND DIAMETER

(F) AP50671 HOSE ASSY 03 x 84"
CAP END - MUST MAINTAIN EQUAL LENGTH
AND DIAMETER

(I) HOSE ASSY 04
CAP END (LIFT)

(J) HOSE ASSY 03
CAP END (ROOM)

(K) HOSE ASSY 03
CAP END (ROOM)

(L) HOSE ASSY 03 ROD END (LIFT)
ALWAYS PRESSURIZED

(M) HOSE ASSY 03
CAP END (LIFT)

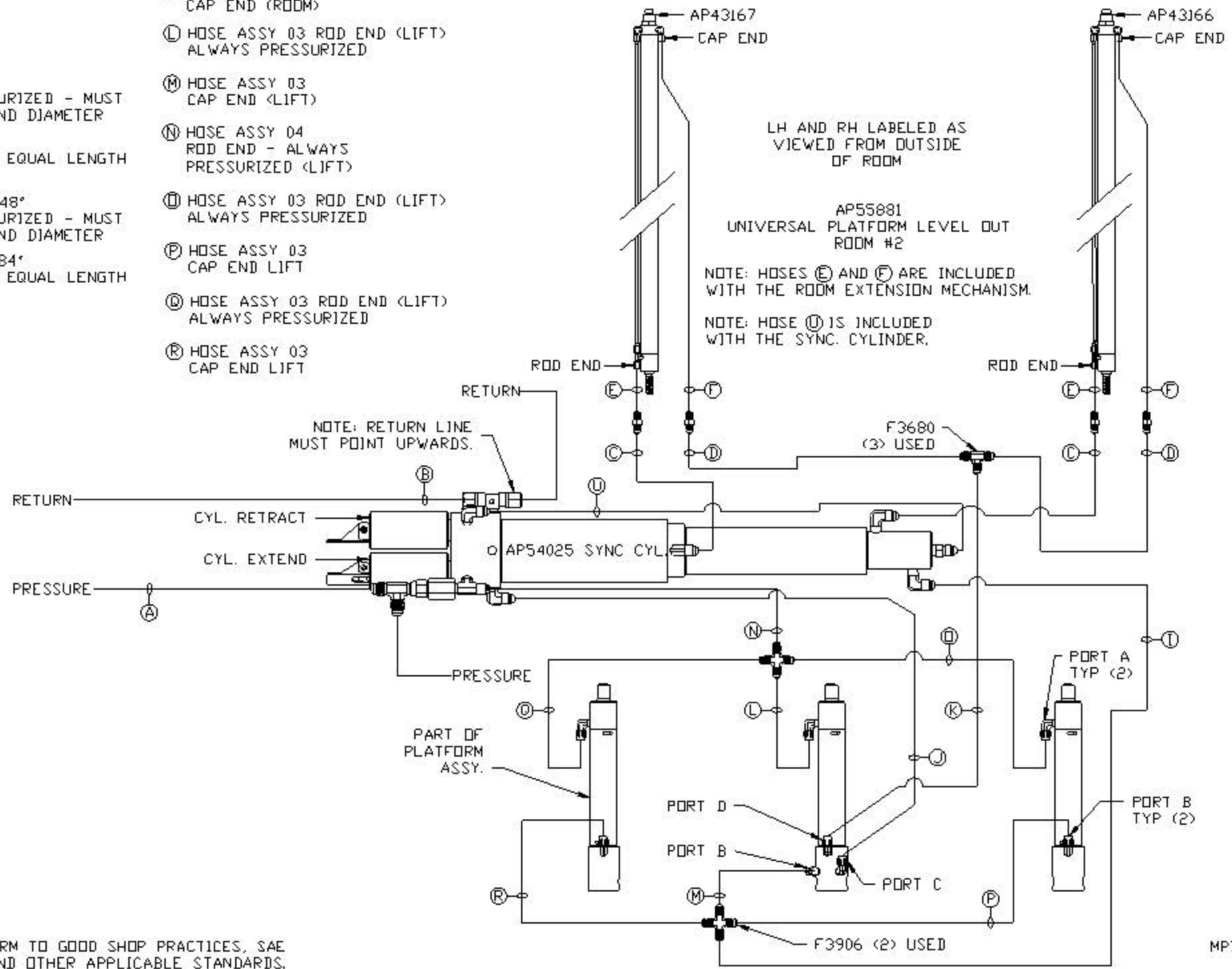
(N) HOSE ASSY 04
ROD END - ALWAYS
PRESSURIZED (LIFT)

(O) HOSE ASSY 03 ROD END (LIFT)
ALWAYS PRESSURIZED

(P) HOSE ASSY 03
CAP END LIFT

(Q) HOSE ASSY 03 ROD END (LIFT)
ALWAYS PRESSURIZED

(R) HOSE ASSY 03
CAP END LIFT



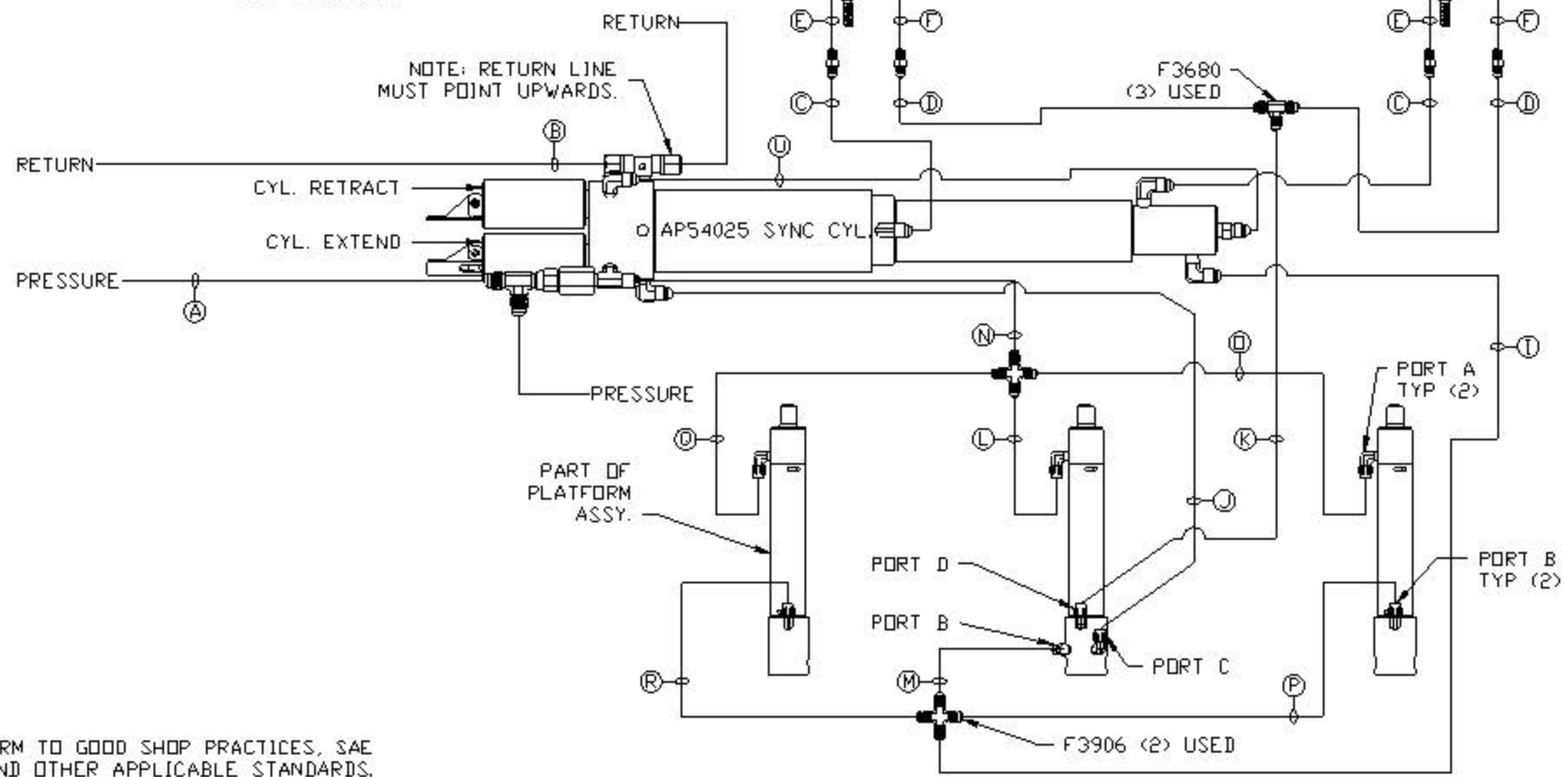
LH AND RH LABELED AS
VIEWED FROM OUTSIDE
OF ROOM

AP55881
UNIVERSAL PLATFORM LEVEL OUT
ROOM #2

NOTE: HOSES (E) AND (F) ARE INCLUDED
WITH THE ROOM EXTENSION MECHANISM.

NOTE: HOSE (U) IS INCLUDED
WITH THE SYNC. CYLINDER.

NOTE: RETURN LINE
MUST POINT UPWARDS.

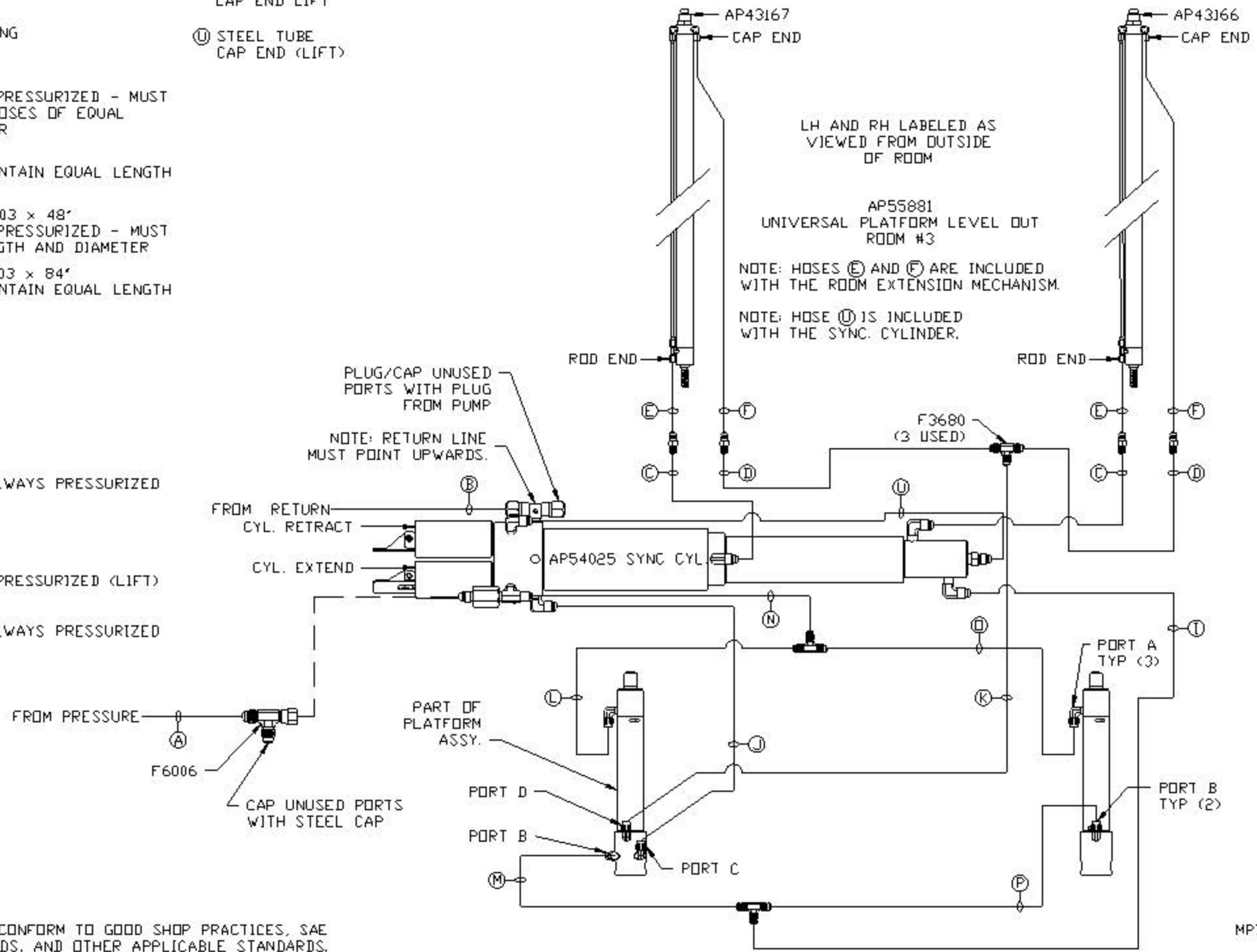


NOTE: INSTALLATION MUST CONFORM TO GOOD SHOP PRACTICES, SAE
STANDARDS, RVIA STANDARDS, AND OTHER APPLICABLE STANDARDS.

MP71222 C/D
16MAY19

- Ⓐ HOSE ASSY 04
PRESSURE
- Ⓑ .375" OD NYLON TUBING
RETURN
- Ⓒ HOSE ASSY 03
ROD END - ALWAYS PRESSURIZED - MUST
BE HIGH PRESSURE HOSES OF EQUAL
LENGTH AND DIAMETER
- Ⓓ HOSE ASSY 04
CAP END - MUST MAINTAIN EQUAL LENGTH
AND DIAMETER
- Ⓔ AP50907 HOSE ASSY 03 x 48"
ROD END - ALWAYS PRESSURIZED - MUST
MAINTAIN EQUAL LENGTH AND DIAMETER
- Ⓕ AP50671 HOSE ASSY 03 x 84"
CAP END - MUST MAINTAIN EQUAL LENGTH
AND DIAMETER
- Ⓖ HOSE ASSY 04
CAP END (LIFT)
- Ⓗ HOSE ASSY 03
CAP END (ROOM)
- Ⓚ HOSE ASSY 03
CAP END (ROOM)
- Ⓛ HOSE ASSY 03
ROD END (LIFT) - ALWAYS PRESSURIZED
- Ⓜ HOSE ASSY 03
CAP END (LIFT)
- Ⓝ HOSE ASSY 04
ROD END - ALWAYS PRESSURIZED (LIFT)
- Ⓟ HOSE ASSY 03
ROD END (LIFT) - ALWAYS PRESSURIZED

- Ⓠ HOSE ASSY 03
CAP END LIFT
- Ⓡ STEEL TUBE
CAP END (LIFT)



NOTE: INSTALLATION MUST CONFORM TO GOOD SHOP PRACTICES, SAE STANDARDS, RVIA STANDARDS, AND OTHER APPLICABLE STANDARDS.