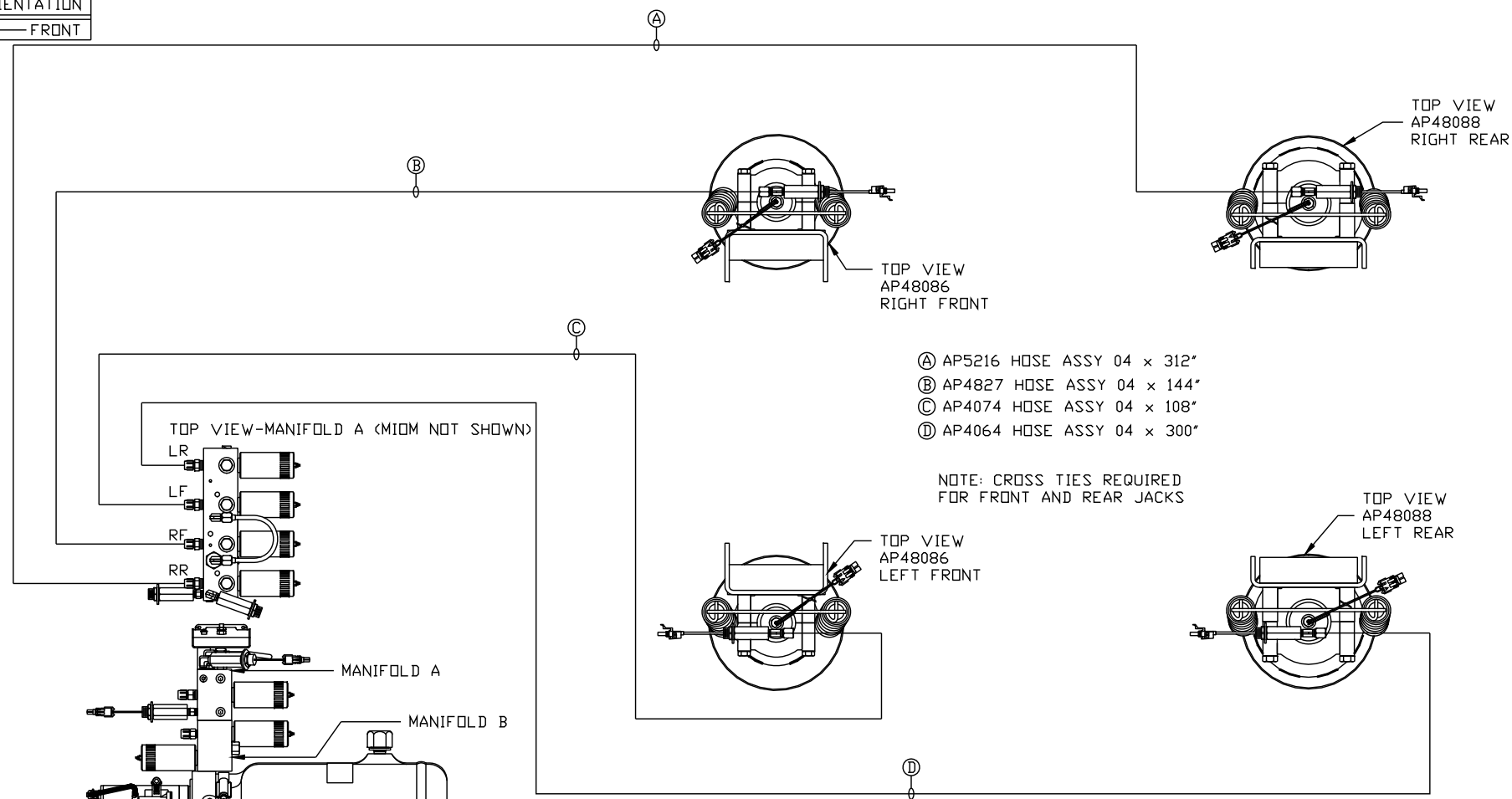
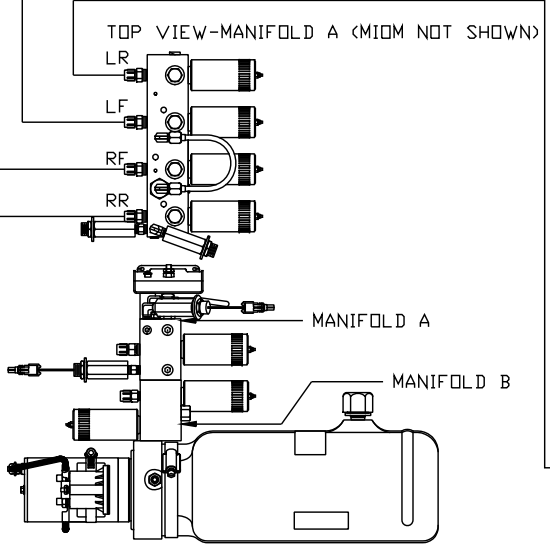


ORIENTATION  
← FRONT



- Ⓐ AP5216 HOSE ASSY 04 x 312"
- Ⓑ AP4827 HOSE ASSY 04 x 144"
- Ⓒ AP4074 HOSE ASSY 04 x 108"
- Ⓓ AP4064 HOSE ASSY 04 x 300"

NOTE: CROSS TIES REQUIRED FOR FRONT AND REAR JACKS



SIDE VIEW PUMP/MANIFOLD-AP58582

LOCATION AND ORIENTATION OF PUMP/MANIFOLD ASSEMBLY WILL DIFFER DEPENDING UPON O.E.M.

NOTE: INSTALLATION MUST CONFORM TO GOOD SHOP PRACTICES, SAE STANDARDS, RVIA STANDARDS, AND OTHER APPLICABLE STANDARDS.

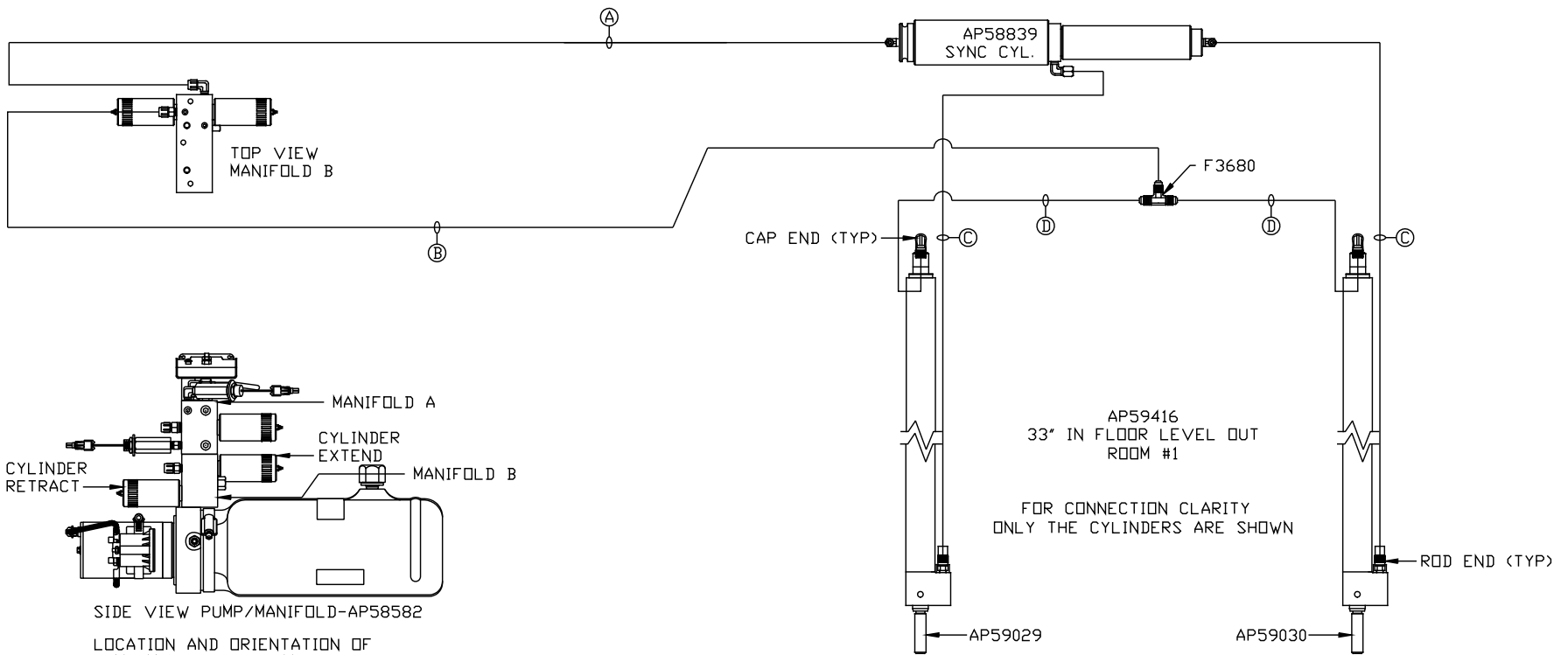
SYNC KIT: AP58807	NO.	DATE	REVISION
PUMP KIT: AP58590	THE INFORMATION DISCLOSED ON THIS DRAWING IS CONFIDENTIAL AND MUST NOT BE DISCLOSED OR USED IN ANY MANNER WHICH WILL BE DETRIMENTAL TO THE HWH CORPORATION		
JACK KIT: AP58588			

<b>HWH</b>		I-80 EXIT 267 SOUTH RT 1 MOSCOW, IOWA 52760	
SCALE 1:6	DATE 28FEB22	DRAWN BY .	
<b>HYD CONN DIAGRAM</b>			
<b>TIFFIN</b>		DRAWING NUMBER MP71399 A/B	

ORIENTATION

← FRONT

- Ⓐ AP4159 HOSE ASSY 04 x 72"  
ROD END - ALWAYS PRESSURIZED
- Ⓑ AP5352 HOSE ASSY 04 x 96"  
CAP END
- Ⓒ AP49517 HOSE ASSY 03 x 180"  
ROD END - ALWAYS PRESSURIZED  
HOSES MUST MAINTAIN EQUAL  
LENGTH AND DIAMETER
- Ⓓ AP10913 HOSE ASSY 04 x 162"  
CAP END - HOSES MUST MAINTAIN  
EQUAL LENGTH AND DIAMETER



NOTE: INSTALLATION MUST CONFORM TO GOOD SHOP PRACTICES, SAE STANDARDS, RVIA STANDARDS, AND OTHER APPLICABLE STANDARDS.

MP71399 B/B  
28FEB22