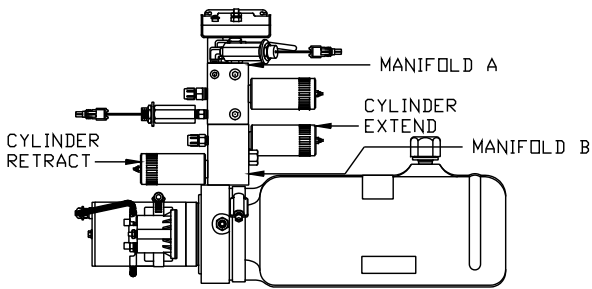
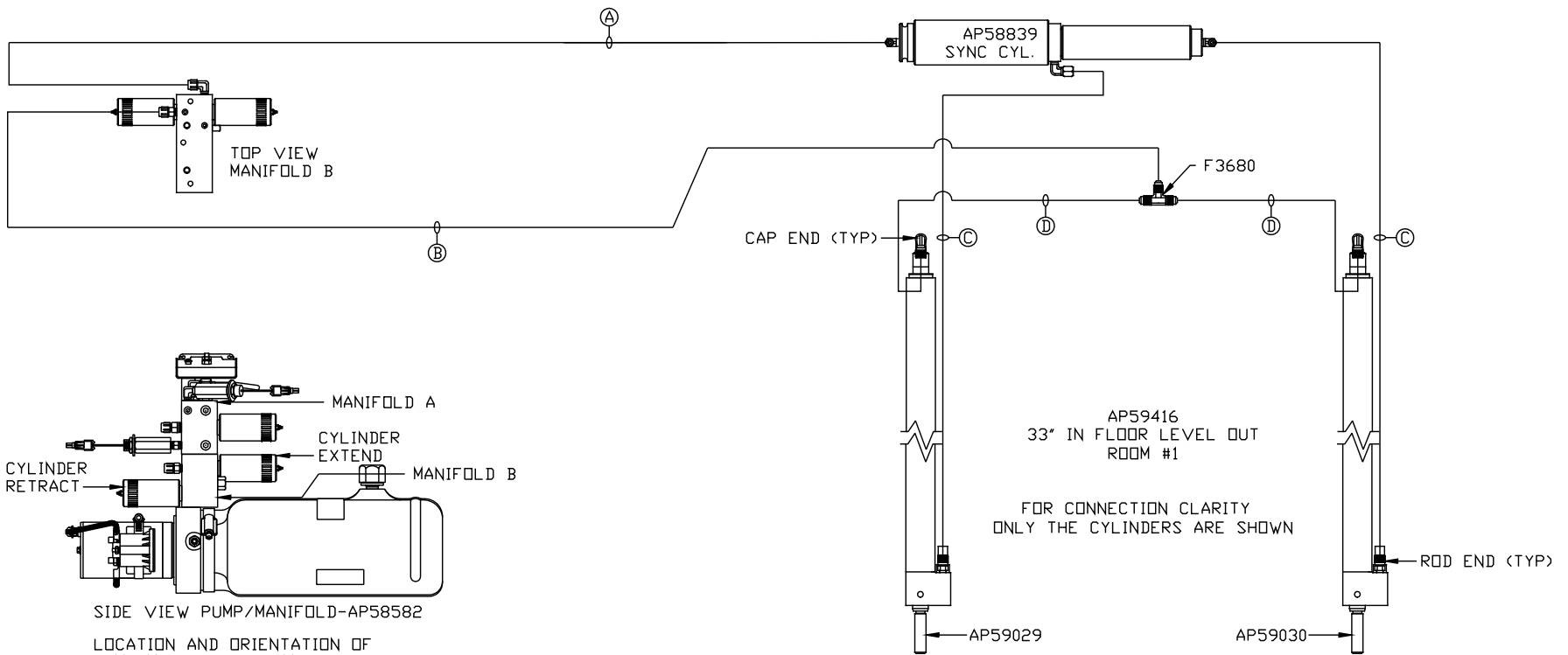


ORIENTATION

← FRONT

- Ⓐ AP4159 HOSE ASSY 04 × 72"
ROD END - ALWAYS PRESSURIZED
- Ⓑ AP5352 HOSE ASSY 04 × 96"
CAP END
- Ⓒ AP49517 HOSE ASSY 03 × 180"
ROD END - ALWAYS PRESSURIZED
HOSES MUST MAINTAIN EQUAL
LENGTH AND DIAMETER
- Ⓓ AP10913 HOSE ASSY 04 × 162"
CAP END - HOSES MUST MAINTAIN
EQUAL LENGTH AND DIAMETER



SIDE VIEW PUMP/MANIFOLD-AP58582

LOCATION AND ORIENTATION OF
PUMP/MANIFOLD ASSEMBLY WILL
DIFFER DEPENDING UPON O.E.M.

NOTE: INSTALLATION MUST CONFORM TO GOOD SHOP PRACTICES, SAE
STANDARDS, RVIA STANDARDS, AND OTHER APPLICABLE STANDARDS.

MP71400 B/B
28FEB22