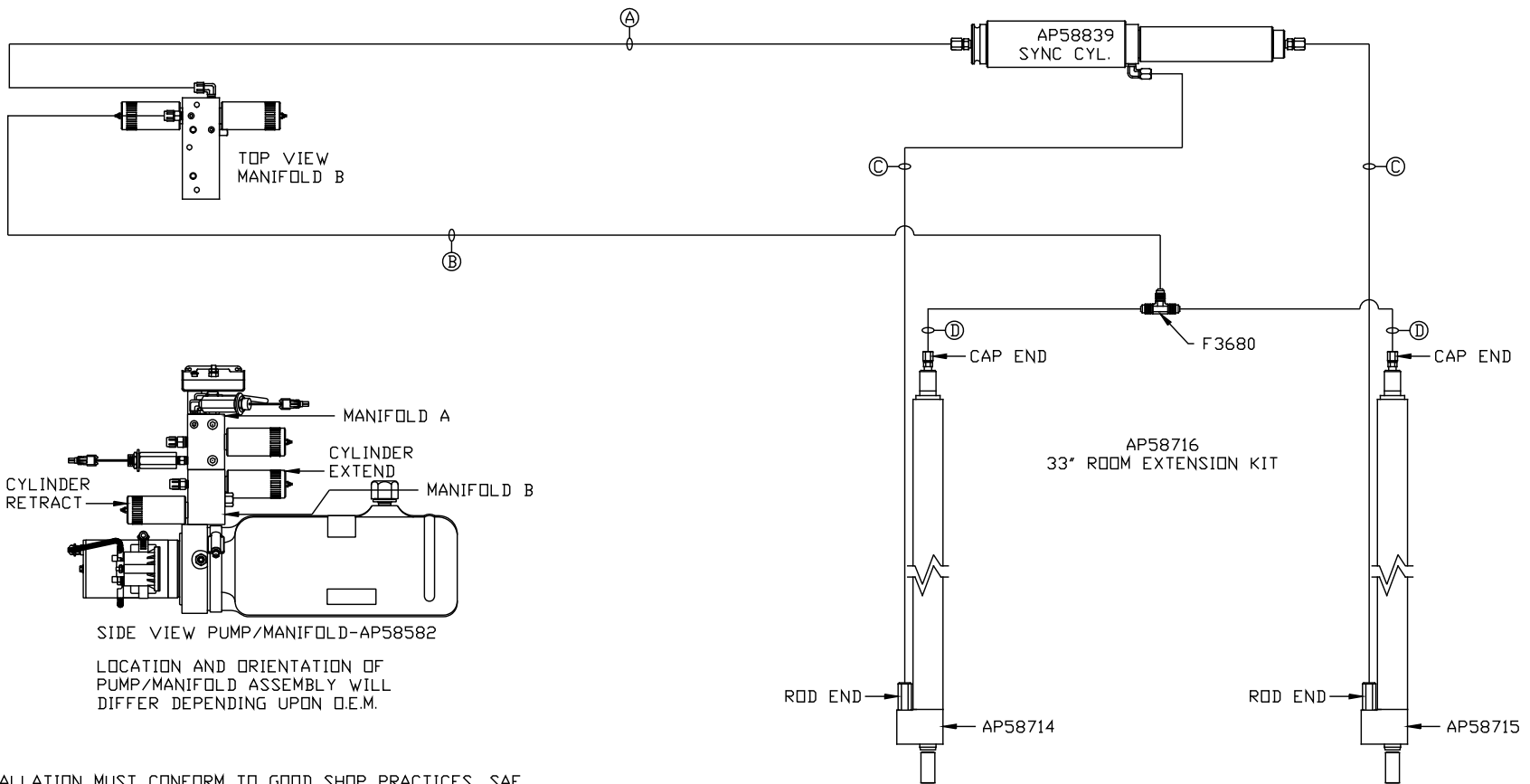




ORIENTATION

← FRONT

- Ⓐ AP4827 HOSE ASSY 04 x 144"  
ROD END - ALWAYS PRESSURIZED
- Ⓑ AP4065 HOSE ASSY 04 x 156"  
CAP END
- Ⓒ AP50847 HOSE ASSY 03 x 204"  
ROD END - ALWAYS PRESSURIZED  
HOSES MUST MAINTAIN EQUAL  
LENGTH AND DIAMETER
- Ⓓ AP4310 HOSE ASSY 04 x 204"  
CAP END - HOSES MUST MAINTAIN  
EQUAL LENGTH AND DIAMETER



NOTE: INSTALLATION MUST CONFORM TO GOOD SHOP PRACTICES, SAE STANDARDS, RVIA STANDARDS, AND OTHER APPLICABLE STANDARDS.

MP71401 B/B  
28FEB22