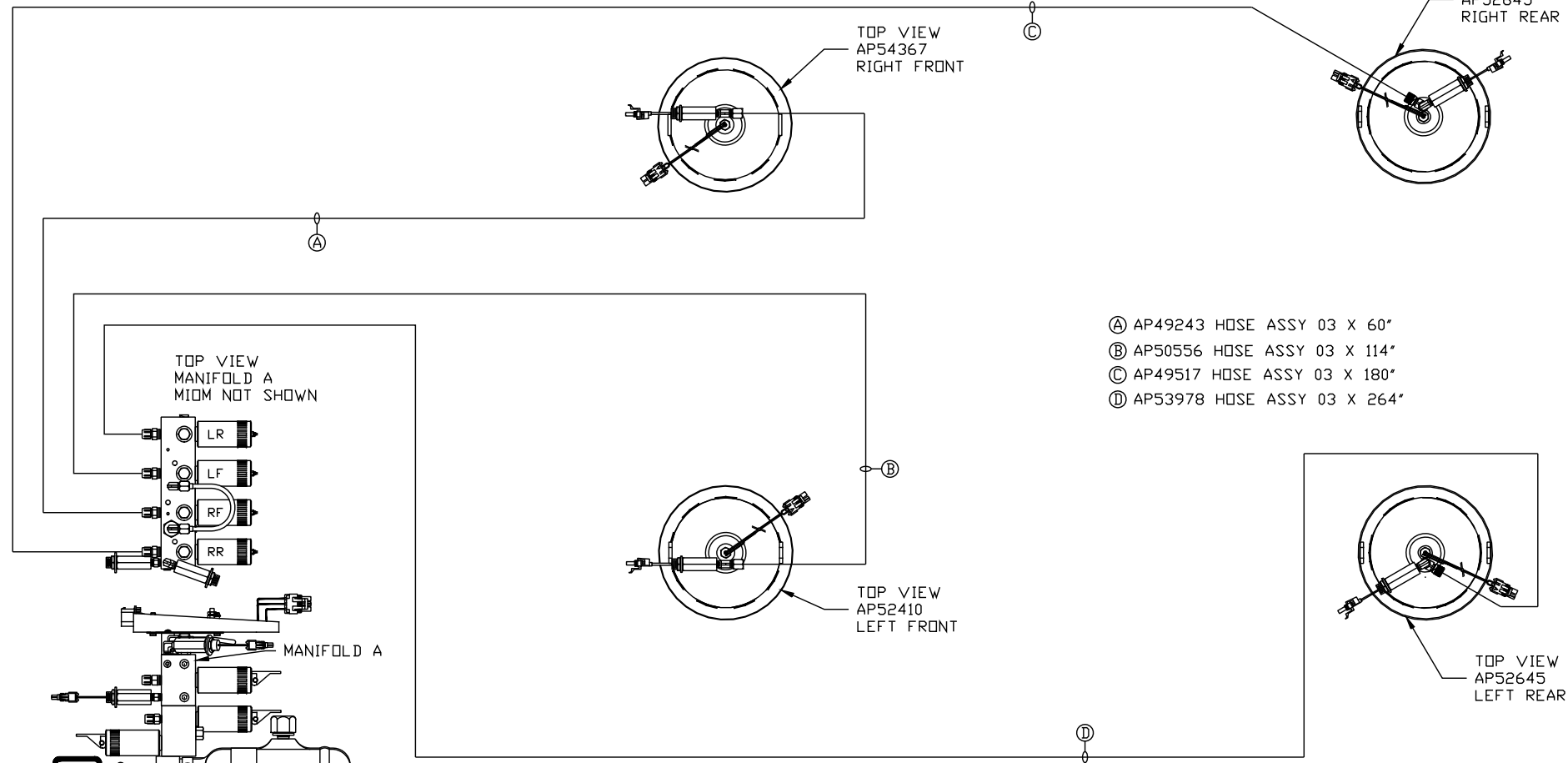


ORIENTATION
← FRONT



SIDE VIEW PUMP/MANIFOLD-AP59077

LOCATION AND ORIENTATION OF PUMP/MANIFOLD ASSEMBLY WILL DIFFER DEPENDING UPON O.E.M.

NOTE: INSTALLATION MUST CONFORM TO GOOD SHOP PRACTICES, SAE STANDARDS, RVIA STANDARDS, AND OTHER APPLICABLE STANDARDS.

LEVELING SYSTEM: AP63749

NO.	DATE	REVISION
THE INFORMATION DISCLOSED ON THIS DRAWING IS CONFIDENTIAL AND MUST NOT BE DISCLOSED OR USED IN ANY MANNER WHICH WILL BE DETRIMENTAL TO THE HWH CORPORATION		

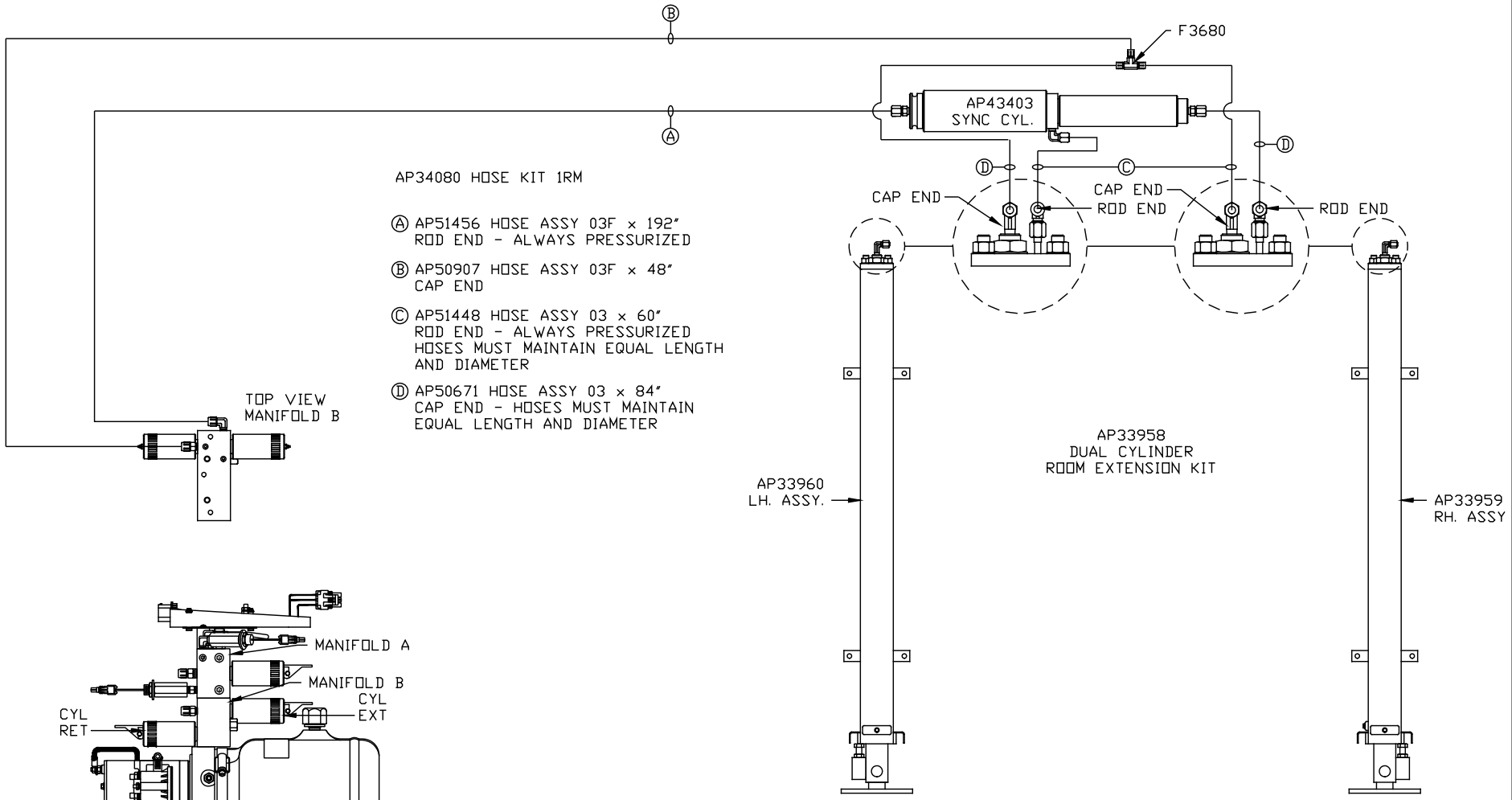
HWH I-80 EXIT 267 SOUTH
RT 1 MOSCOW, IOWA 52760

SCALE 1:6 DATE 20JUL22 DRAWN BY .

HYD CONN DIAGRAM

COACH HOUSE

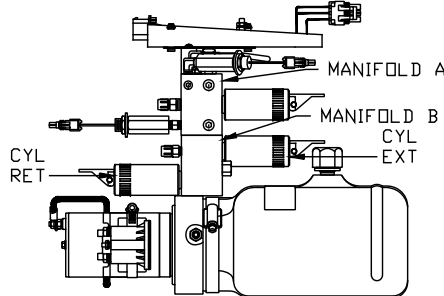
DRAWING NUMBER
MP71437 A/B



AP34080 HOSE KIT 1RM

- Ⓐ AP51456 HOSE ASSY 03F x 192"
ROD END - ALWAYS PRESSURIZED
- Ⓑ AP50907 HOSE ASSY 03F x 48"
CAP END
- Ⓒ AP51448 HOSE ASSY 03 x 60"
ROD END - ALWAYS PRESSURIZED
HOSES MUST MAINTAIN EQUAL LENGTH
AND DIAMETER
- Ⓓ AP50671 HOSE ASSY 03 x 84"
CAP END - HOSES MUST MAINTAIN
EQUAL LENGTH AND DIAMETER

TOP VIEW
MANIFOLD B



SIDE VIEW PUMP/MANIFOLD-AP59077
LOCATION AND ORIENTATION OF
PUMP/MANIFOLD ASSEMBLY WILL
DIFFER DEPENDING UPON O.E.M.

NOTE: INSTALLATION MUST CONFORM TO GOOD SHOP PRACTICES, SAE STANDARDS, RVIA STANDARDS, AND OTHER APPLICABLE STANDARDS.

MP71437 B/B
20JUL22