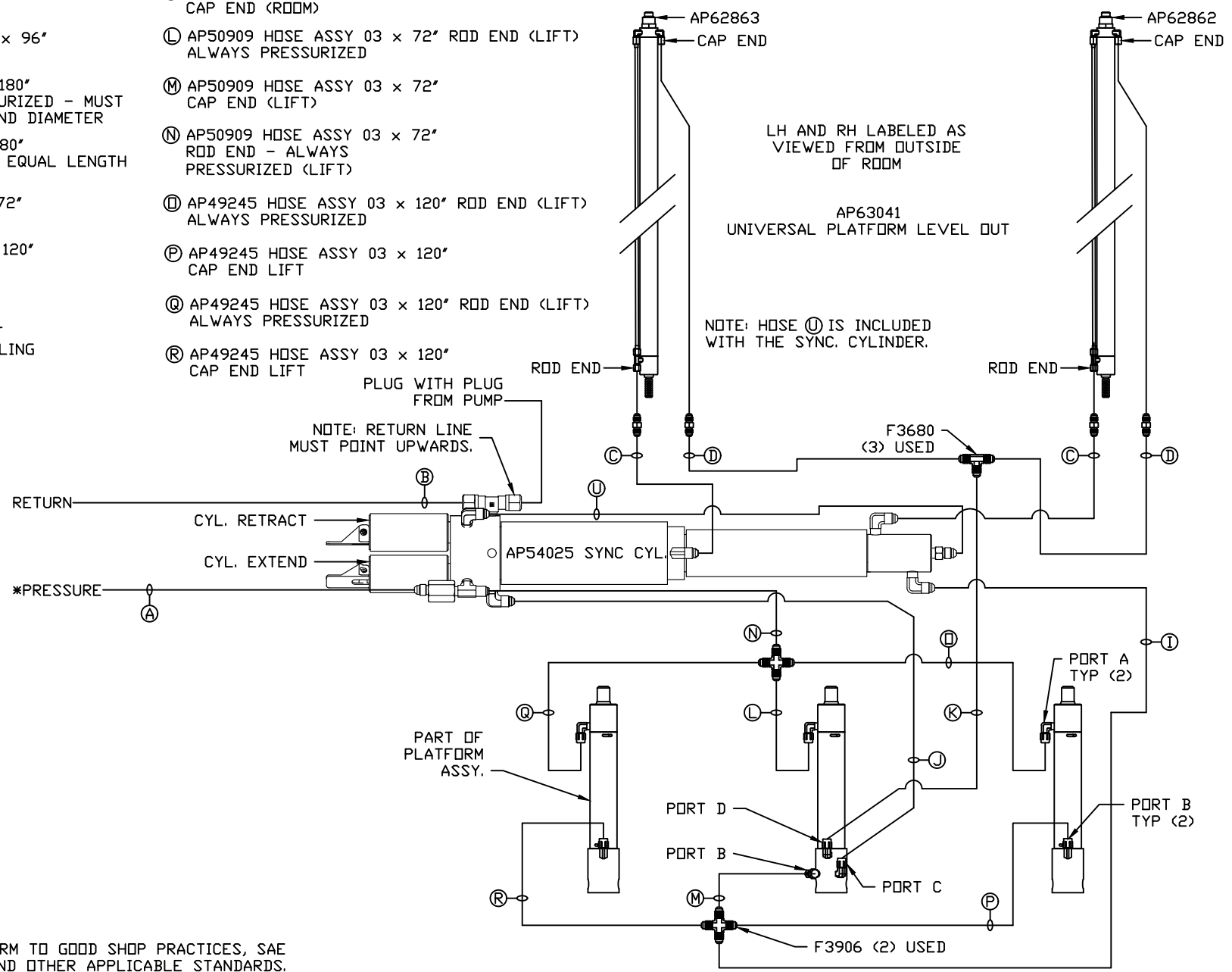


- Ⓐ AP4159 HOSE ASSY 04 x 72" PRESSURE
- Ⓑ P5254 NYLON TUBING 3/8 x 96" RETURN
- Ⓒ AP49517 HOSE ASSY 03 x 180" ROD END - ALWAYS PRESSURIZED - MUST MAINTAIN EQUAL LENGTH AND DIAMETER
- Ⓓ AP5965 HOSE ASSY 04 x 180" CAP END - MUST MAINTAIN EQUAL LENGTH AND DIAMETER
- Ⓚ AP50909 HOSE ASSY 03 x 72" CAP END (LIFT)
- Ⓛ AP50909 HOSE ASSY 03 x 72" ROD END (LIFT) ALWAYS PRESSURIZED
- Ⓜ AP50909 HOSE ASSY 03 x 72" CAP END (LIFT)
- Ⓝ AP50909 HOSE ASSY 03 x 72" ROD END - ALWAYS PRESSURIZED (LIFT)
- Ⓟ AP49245 HOSE ASSY 03 x 120" ROD END (LIFT) ALWAYS PRESSURIZED
- Ⓠ AP49245 HOSE ASSY 03 x 120" CAP END LIFT
- Ⓡ AP49245 HOSE ASSY 03 x 120" ROD END (LIFT) ALWAYS PRESSURIZED
- Ⓢ AP49245 HOSE ASSY 03 x 120" CAP END LIFT

- Ⓚ AP50909 HOSE ASSY 03 x 72" CAP END (ROOM)
- Ⓛ AP50909 HOSE ASSY 03 x 72" ROD END (LIFT) ALWAYS PRESSURIZED
- Ⓜ AP50909 HOSE ASSY 03 x 72" CAP END (LIFT)
- Ⓝ AP50909 HOSE ASSY 03 x 72" ROD END - ALWAYS PRESSURIZED (LIFT)
- Ⓟ AP49245 HOSE ASSY 03 x 120" ROD END (LIFT) ALWAYS PRESSURIZED
- Ⓠ AP49245 HOSE ASSY 03 x 120" CAP END LIFT
- Ⓡ AP49245 HOSE ASSY 03 x 120" ROD END (LIFT) ALWAYS PRESSURIZED
- Ⓢ AP49245 HOSE ASSY 03 x 120" CAP END LIFT

AP64512 HOSE KIT 1RM/UPLO

\*NOTE: ISOLATED PRESSURE IF AVAILABLE, SEE LEVELING SYSTEM DIAGRAM



NOTE: INSTALLATION MUST CONFORM TO GOOD SHOP PRACTICES, SAE STANDARDS, RVIA STANDARDS, AND OTHER APPLICABLE STANDARDS.