

NOTE: INSTALLATION MUST CONFORM TO GOOD SHOP PRACTICES, SAE STANDARDS, RVIA STANDARDS, AND OTHER APPLICABLE STANDARDS.

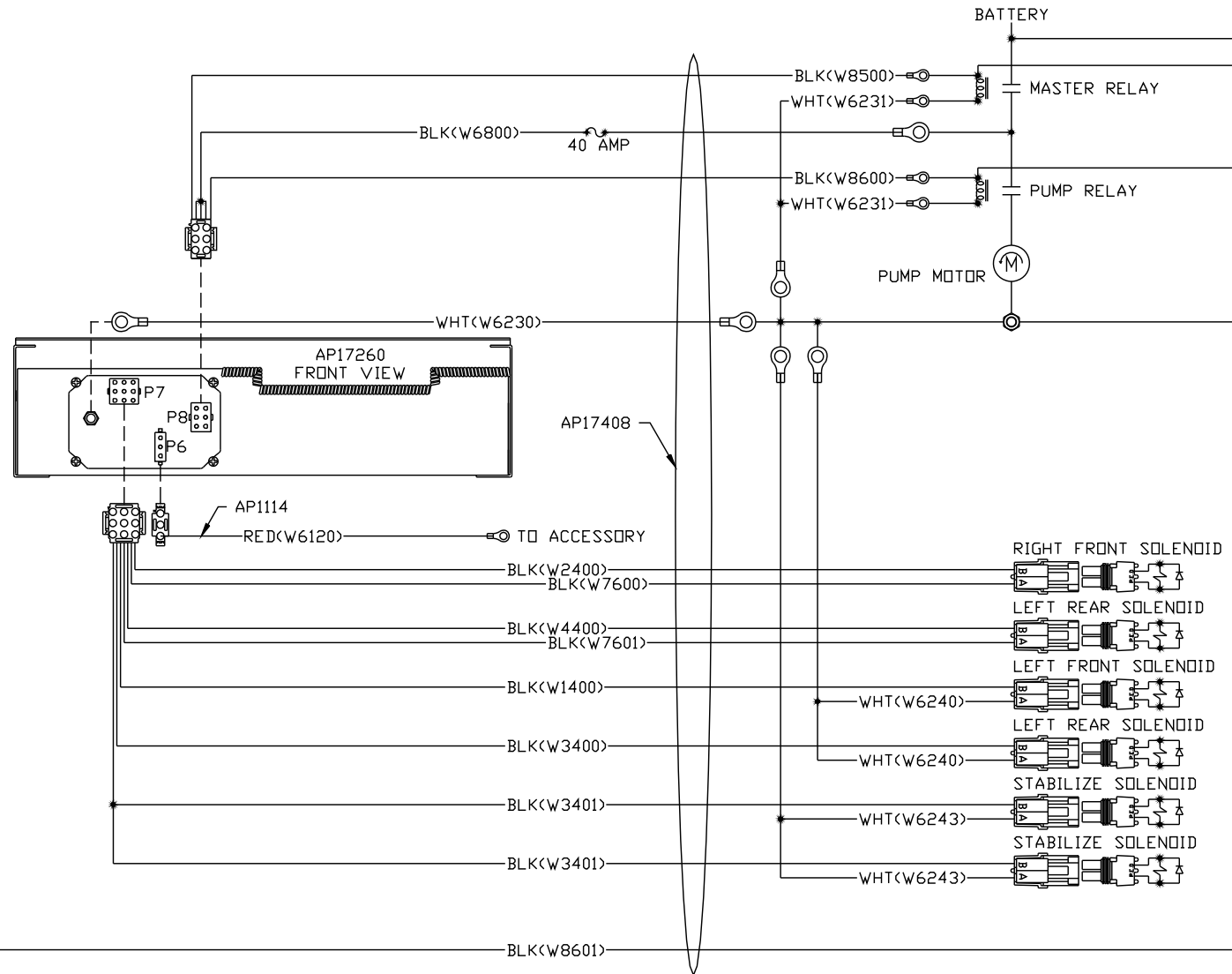
			HWH I-80 EXIT 267 SOUTH RT 1 MOSCOW, IOWA 52760		
2	15MAY08	REDRAWN TO 1:3 SCALE	SCALE 1:3	DATE 10MAR98	DRAWN BY .
1	12MAY99	UPDATED TO NEW STRDS	SYSTEM SCHEMATIC ELEC		
NO.	DATE	REVISION			
THE INFORMATION DISCLOSED ON THIS DRAWING IS CONFIDENTIAL AND MUST NOT BE DISCLOSED OR USED IN ANY MANNER WHICH WILL BE DETRIMENTAL TO THE HWH CORPORATION			DRAWING NUMBER MP88162 A/C		

- P6
 1. N/C
 2. N/C
 3. RED<W6120> ACCESSORY

- P8
 1. RED<W6100> BATTERY
 2. RED<W6100> BATTERY
 3. RED<W6100> BATTERY
 4. BLK<W8500> MASTER RELAY
 5. N/C
 6. BLK<W8600> PUMP RELAY

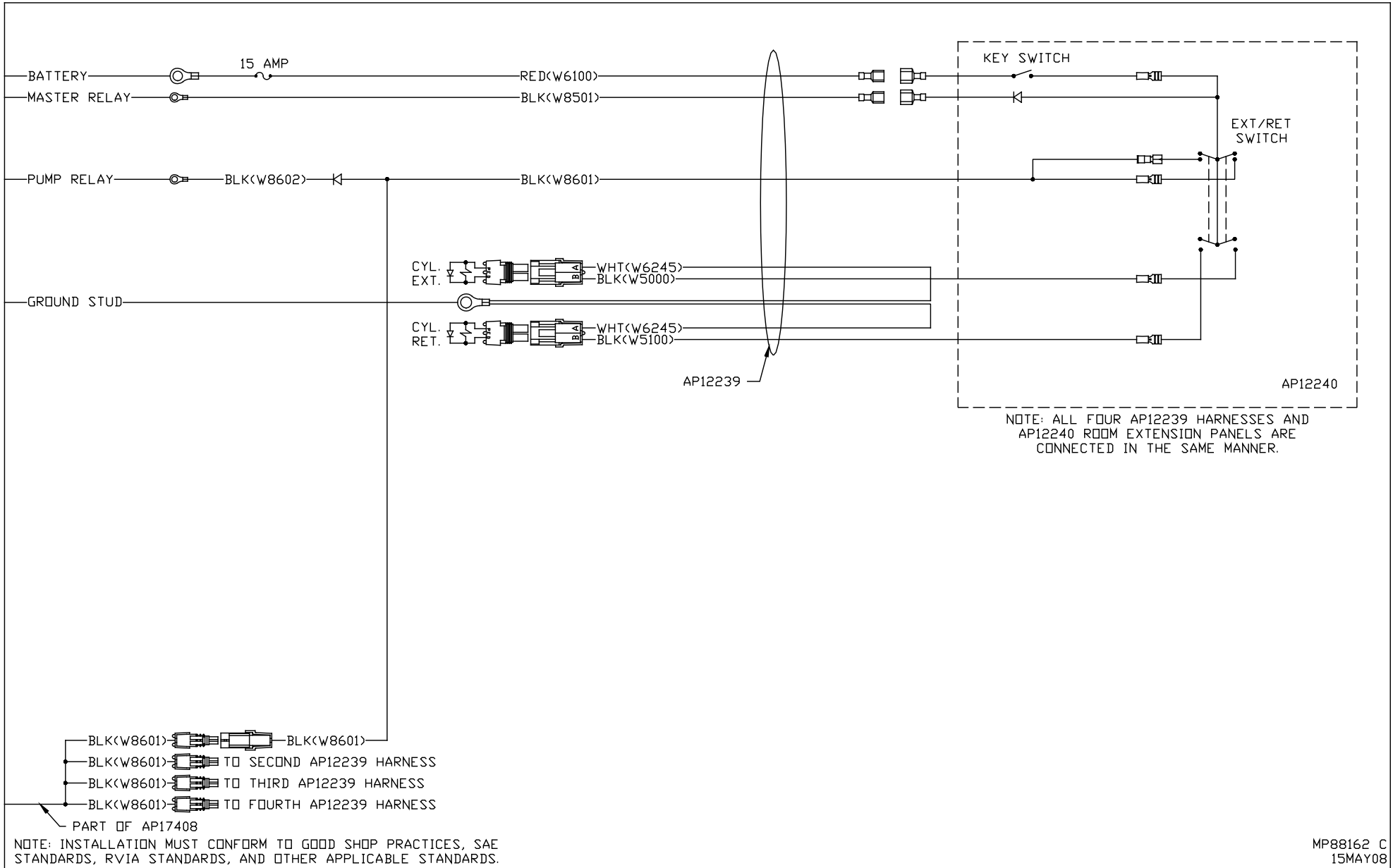
- P7
 1. BLK<W7601> CRX 2
 2. BLK<W7600> CRX 1
 3. N/C
 4. BLK<W4400> LR SOLENOID
 5. BLK<W3400> RR SOLENOID
 6. BLK<W1400> LF SOLENOID
 7. N/C
 8. BLK<W2400> RF SOLENOID
 9. BLK<W3401> STABILIZE SOLENOID

NOTE: WIRE NUMBERS ON THIS SHEET ARE REFERENCED TO HARNESS PLUGS.



NOTE: INSTALLATION MUST CONFORM TO GOOD SHOP PRACTICES, SAE STANDARDS, RVIA STANDARDS, AND OTHER APPLICABLE STANDARDS.

MP88162 B
 15MAY08



NOTE: INSTALLATION MUST CONFORM TO GOOD SHOP PRACTICES, SAE STANDARDS, RVIA STANDARDS, AND OTHER APPLICABLE STANDARDS.

MP88162 C
15MAY08