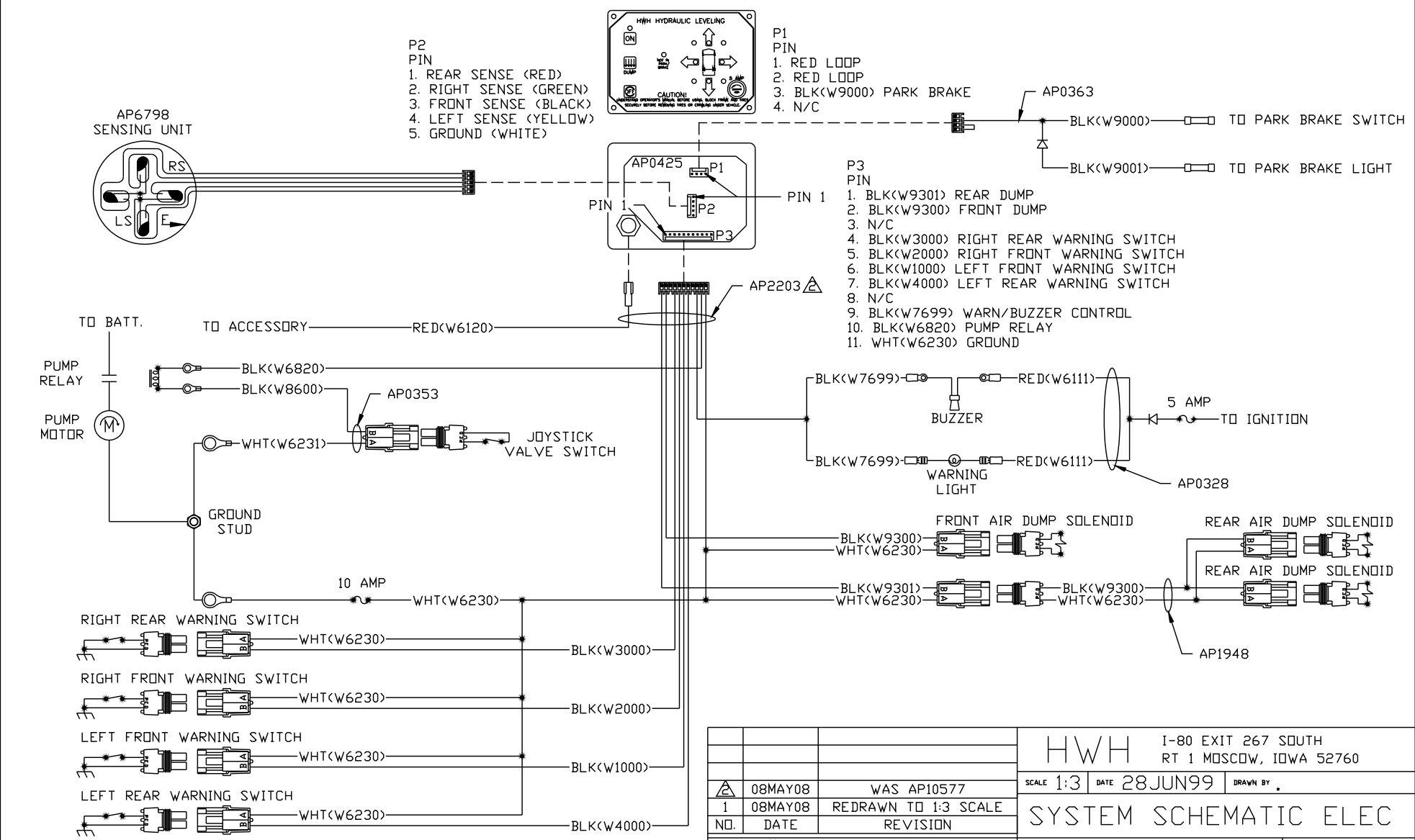


- P2
PIN
1. REAR SENSE (RED)
2. RIGHT SENSE (GREEN)
3. FRONT SENSE (BLACK)
4. LEFT SENSE (YELLOW)
5. GROUND (WHITE)

- P1
PIN
1. RED LOOP
2. RED LOOP
3. BLK(W9000) PARK BRAKE
4. N/C

- P3
PIN
1. BLK(W9301) REAR DUMP
2. BLK(W9300) FRONT DUMP
3. N/C
4. BLK(W3000) RIGHT REAR WARNING SWITCH
5. BLK(W2000) RIGHT FRONT WARNING SWITCH
6. BLK(W1000) LEFT FRONT WARNING SWITCH
7. BLK(W4000) LEFT REAR WARNING SWITCH
8. N/C
9. BLK(W7699) WARN/BUZZER CONTROL
10. BLK(W6820) PUMP RELAY
11. WHT(W6230) GROUND



NOTE: INSTALLATION MUST CONFORM TO GOOD SHOP PRACTICES, SAE STANDARDS, RVIA STANDARDS, AND OTHER APPLICABLE STANDARDS.

		HWH I-80 EXIT 267 SOUTH RT 1 MOSCOW, IOWA 52760	
		SCALE 1:3	DATE 28JUN99
		DRAWN BY .	
		SYSTEM SCHEMATIC ELEC	
		DRAWING NUMBER MP885130	
NO.	DATE	REVISION	
1	08MAY08	REDRAWN TO 1:3 SCALE	
	08MAY08	WAS AP10577	
THE INFORMATION DISCLOSED ON THIS DRAWING IS CONFIDENTIAL AND MUST NOT BE DISCLOSED OR USED IN ANY MANNER WHICH WILL BE DETRIMENTAL TO THE HWH CORPORATION			