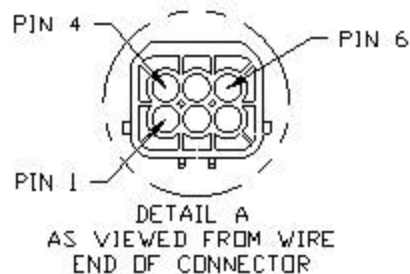
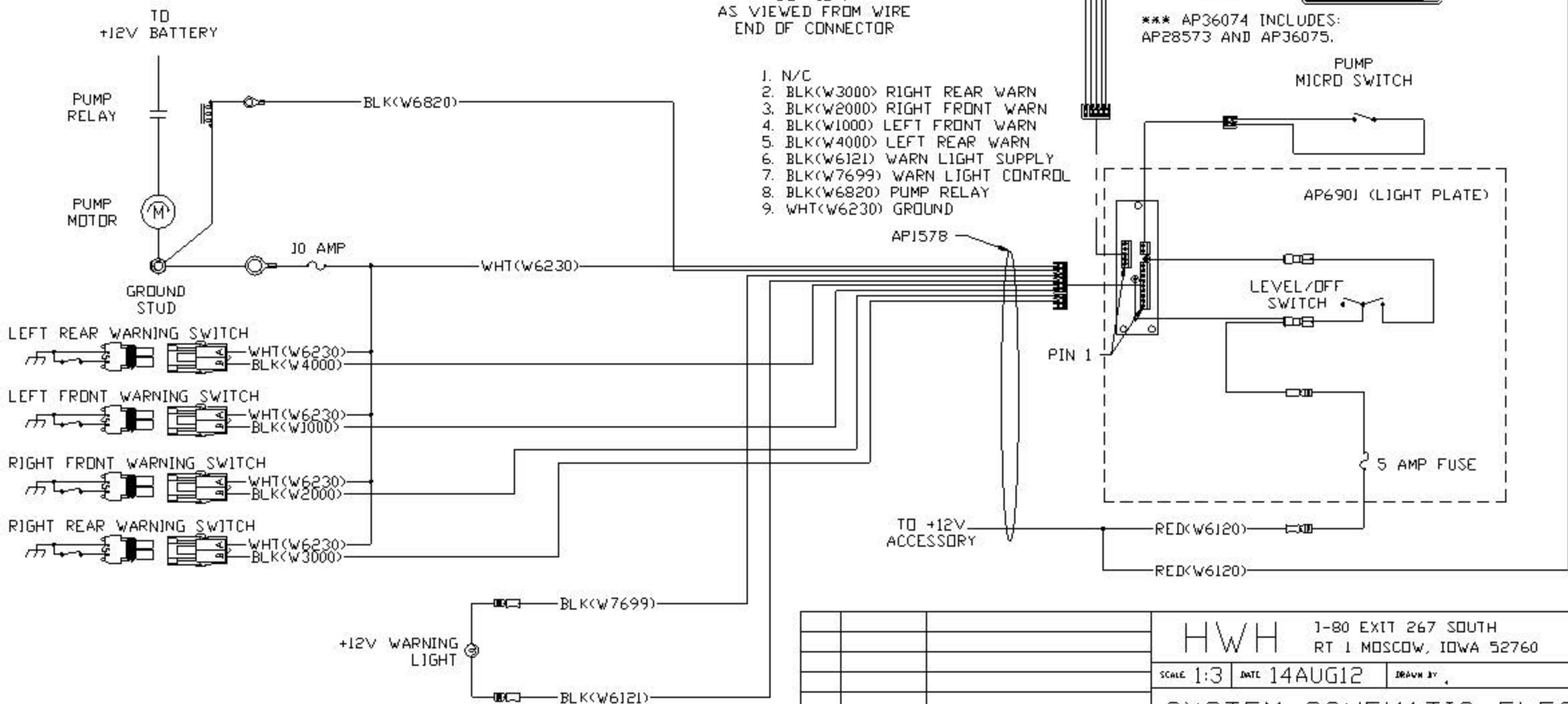


- PIN
1. RIGHT REAR SENSE (ORANGE)
 2. GROUND (WHITE)
 3. ACCESSORY (RED)
 4. LEFT REAR SENSE (YELLOW)
 5. LEFT FRONT SENSE (BLACK)
 6. RIGHT FRONT SENSE (GREEN)



1. N/C
2. BLK(W3000) RIGHT REAR WARN
3. BLK(W2000) RIGHT FRONT WARN
4. BLK(W1000) LEFT FRONT WARN
5. BLK(W4000) LEFT REAR WARN
6. BLK(W6121) WARN LIGHT SUPPLY
7. BLK(W7699) WARN LIGHT CONTROL
8. BLK(W6820) PUMP RELAY
9. WHT(W6230) GROUND



*** AP36074 INCLUDES:
AP28573 AND AP36075.

HWH 1-80 EXIT 267 SOUTH
RT 1 MOSCOW, IOWA 52760

SCALE 1:3 DATE 14AUG12 DRAWN BY

SYSTEM SCHEMATIC ELEC

NO.	DATE	REVISION

THE INFORMATION DISCLOSED ON THIS DRAWING IS CONFIDENTIAL AND MUST NOT BE DISCLOSED OR USED IN ANY MANNER WHICH WILL BE DETRIMENTAL TO THE HWH CORPORATION

DRAWING NUMBER
MP908120

NOTE: INSTALLATION MUST CONFORM TO GOOD SHOP PRACTICES, SAE STANDARDS, RVIA STANDARDS, AND OTHER APPLICABLE STANDARDS.