

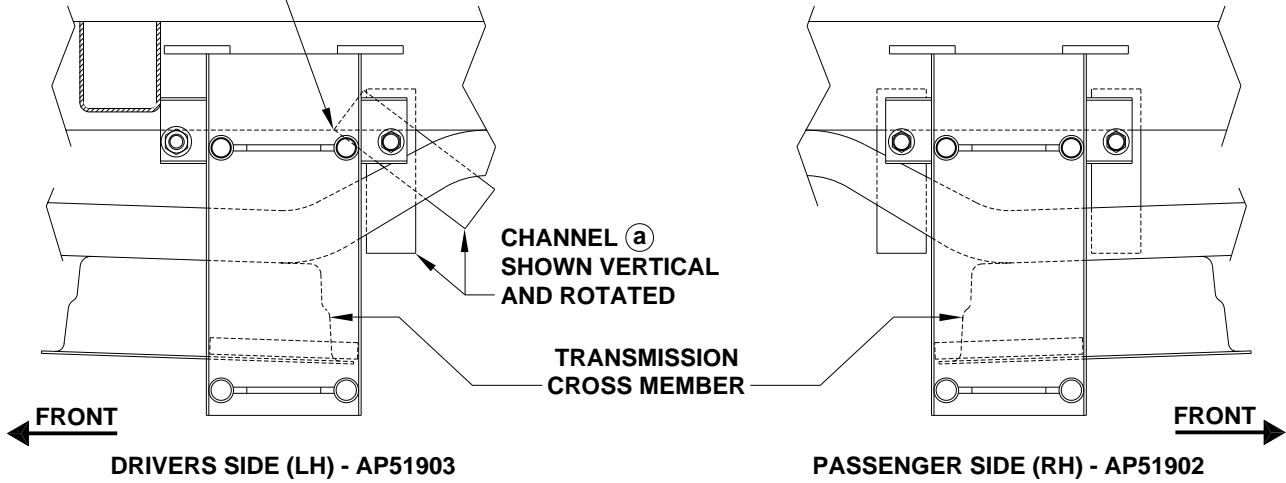
FRONT JACKS MOUNTING - SPRINTER CHASSIS

INSTRUCTION SHEET

AP51904 KIT

CHANNEL (a) MAY NEED TO BE ROTATED, DO NOT ALLOW CORNER TO DROP BELOW FRAME RAIL

MOUNTING BRACKETS SHOULD BE AS FAR FORWARD AS POSSIBLE AND STRAIGHT ACROSS FROM EACH OTHER. BRACKETS ARE RIGHT AND LEFT HAND SPECIFIC. THE SUPPORT BAR ON THE BACK OF EACH BRACKET SHOULD REST ON AND RUN PARALLEL TO THE LIP OF AND THE TRANSMISSION CROSS MEMBER.



(a) CHANNEL FORMED



(b) WASHER 3/4" OD
1/4" THICK



(c) BOLT 3/8" x 4"



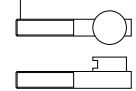
(d) NUT 3/8" WHIZ



(e) NUT 7/16" WHIZ



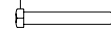
(f) 7/16" CLAMP THREADED**



(g) BRACKET GROOVE



(h) BOLT 7/16" x 2.25"

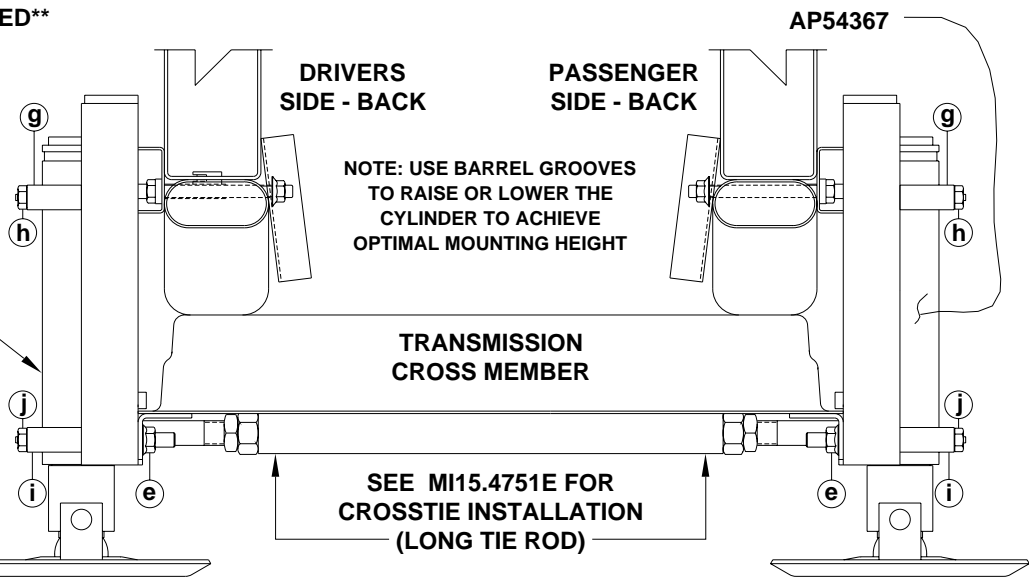
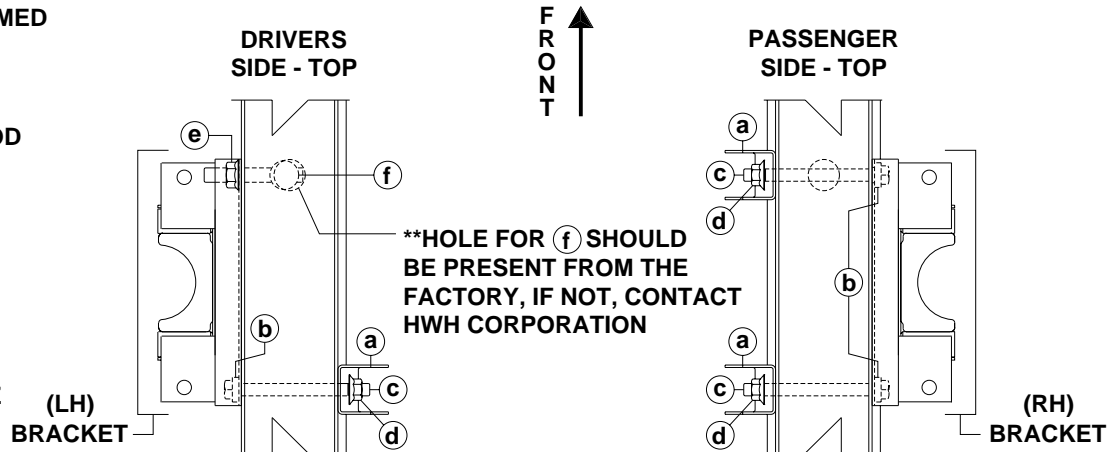
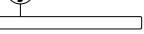


AP52410

(i) BRACKET BARREL



(j) BOLT 7/16" x 4.5"



* BRACKETS ARE DIAMETER SPECIFIC. THE SMALLER DIAMETER MUST BE USED IN A GROOVE. THE LARGER DIAMETER MUST BE USED AROUND THE BARREL.

M15.4751C
14MAR17