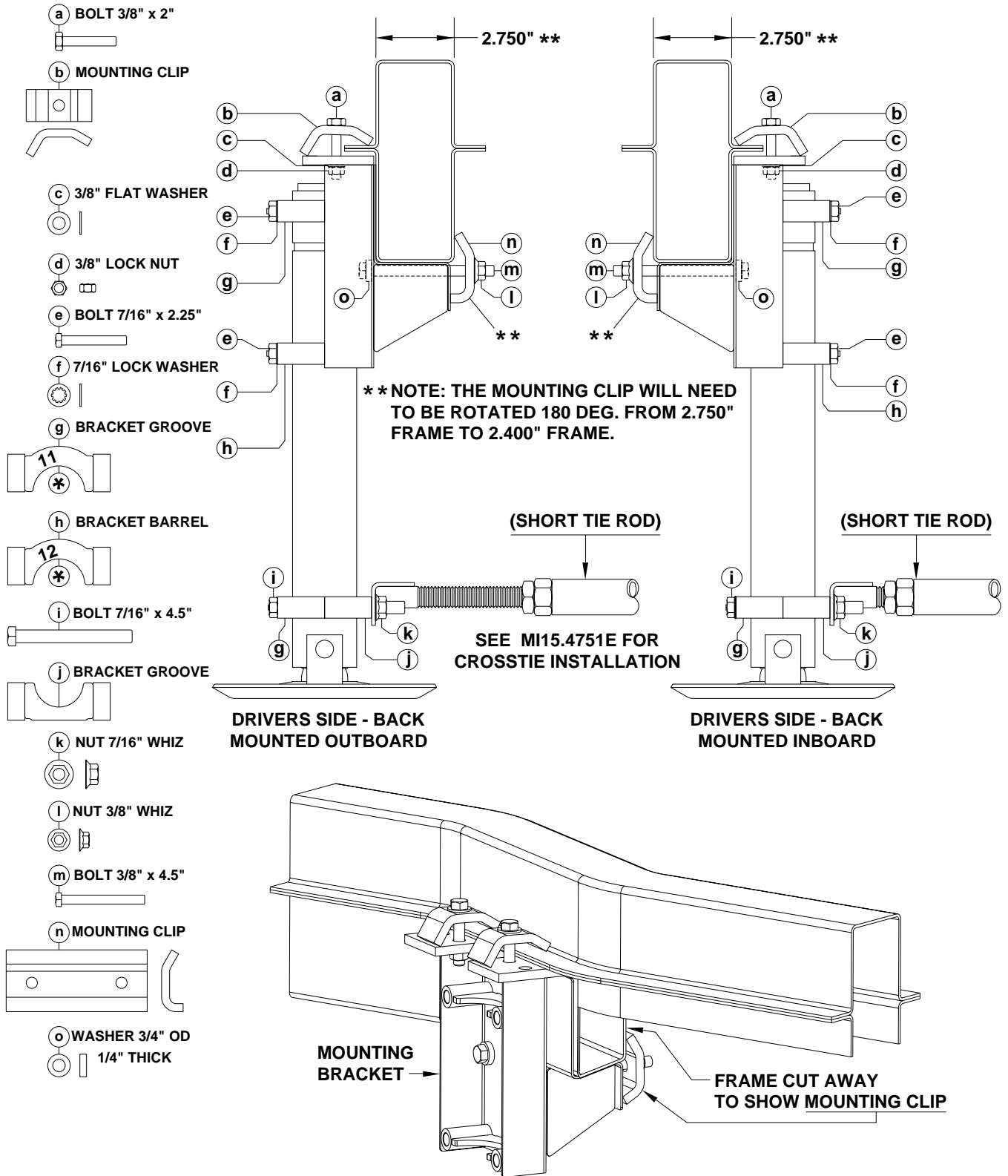


REAR JACKS MOUNTING - SPRINTER CHASSIS

INSTRUCTION SHEET

AP52759 KIT



BRACKETS MUST BE MOUNTED BOTH OUTBOARD OR BOTH INBOARD OF THE FRAME. BRACKETS CAN BE LOCATED JUST BEFORE, WITHIN THE SPACE OF (AS SEEN ABOVE) OR JUST AFTER THE FRAME BEND.

*** BRACKETS ARE DIAMETER SPECIFIC. THE SMALLER DIAMETER MUST BE USED IN A GROOVE. THE LARGER DIAMETER MUST BE USED AROUND THE BARREL.**

**MI15.4751D
14DEC17**