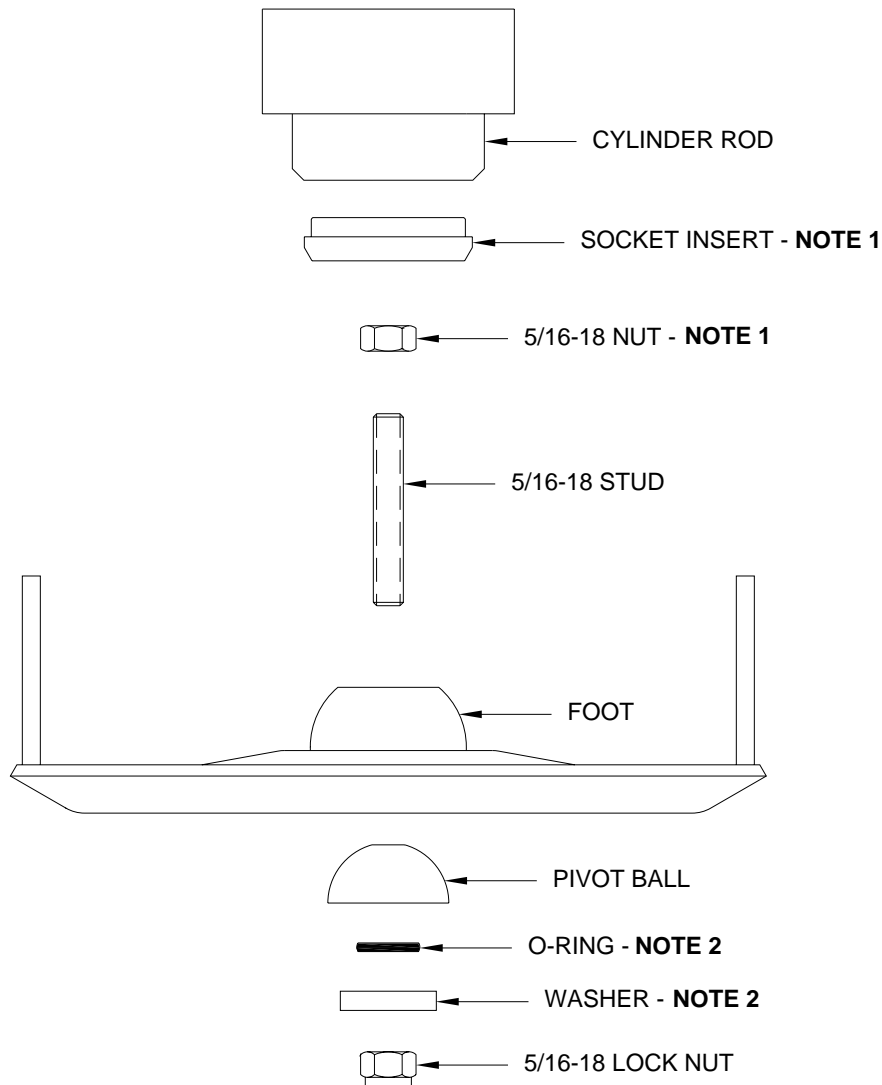

INSTRUCTION SHEET

BOLT-ON FOOT AND STUD REPLACEMENT

3,000# - 9,000# JACKS



NOTE 1: SOCKET INSERT AND 5/16-18 NUT ARE ONLY USED WITH POWER-EXTEND / SPRING-RETRACT (SINGLE-ACTING) JACKS WITH A 2" DIAMETER CYLINDER ROD. (SOME EARLY JACKS MAY NOT NEED THE INSERT OR NUT.)

NOTE 2: O-RING AND WASHER ARE ONLY USED WITH POWER-EXTEND / POWER-RETRACT (DOUBLE-ACTING) JACKS.

AN IMPACT WRENCH WORKS BEST TO REMOVE THE NUT(S) AND STUD. IF AN IMPACT WRENCH IS NOT AVAILABLE, EXTEND THE CYLINDER SEVERAL INCHES AND USE A STRAP WRENCH TO KEEP THE CYLINDER ROD FROM TWISTING. **IMPORTANT: DO NOT SCRATCH OR NICK THE ROD. THIS WOULD CAUSE THE CYLINDER TO LEAK.**

1. INSTALL THE 5/16-18 STUD (AND NUT IF REQUIRED) INTO THE CYLINDER ROD WITH LOCTITE. APPROXIMATELY 1 INCH OF THE STUD SHOULD STICK PAST THE END OF THE CYLINDER ROD OR SOCKET INSERT IF USED. WITH THE FOOT INSTALLED, AT LEAST ONE FULL THREAD OF THE STUD SHOULD EXTEND BEYOND THE END OF THE LOCK NUT. THE END OF THE STUD CAN NOT EXTEND BEYOND THE BOTTOM OF THE FOOT.

2. INSTALL THE SOCKET INSERT (IF NEEDED), FOOT, PIVOT BALL, ETC. AS SHOWN.

3. TIGHTEN THE LOCKNUT UNTIL THE FOOT IS SNUG BUT STILL ABLE TO PIVOT. THE FOOT SHOULD NOT BE LOOSE.