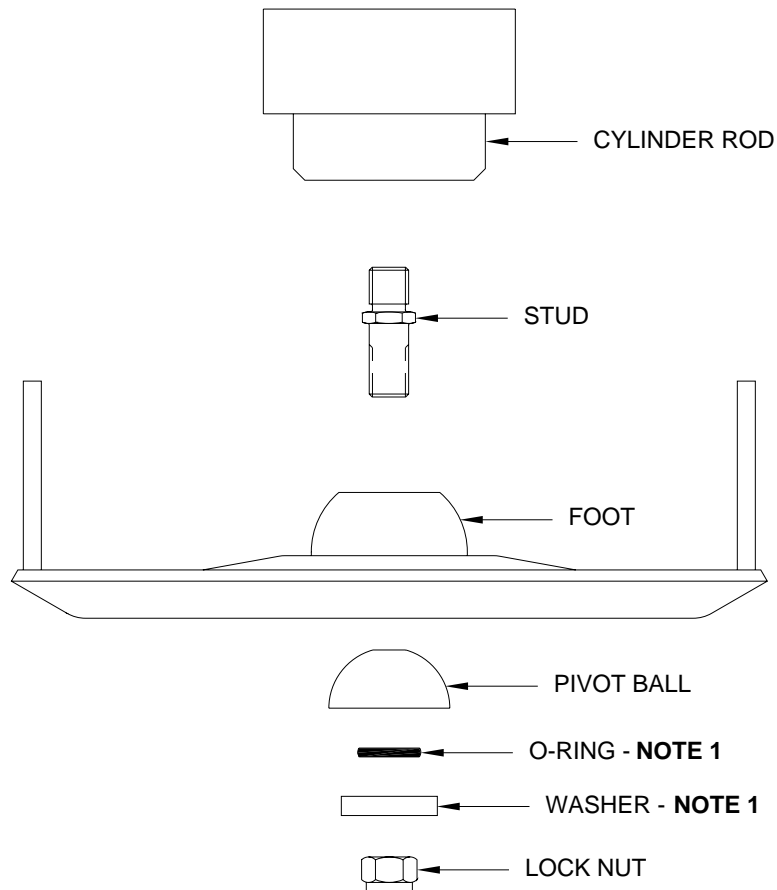

INSTRUCTION SHEET
BOLT-ON FOOT AND STUD REPLACEMENT
10,000# - 24,000# JACKS



NOTE 1: O-RING AND WASHER ARE ONLY USED WITH POWER-EXTEND / POWER-RETRACT (DOUBLE-ACTING) JACKS.

AN IMPACT WRENCH WORKS BEST TO REMOVE THE NUT(S) AND STUD. IF AN IMPACT WRENCH IS NOT AVAILABLE, EXTEND THE CYLINDER SEVERAL INCHES AND USE A STRAP WRENCH TO KEEP THE CYLINDER ROD FROM TWISTING. **IMPORTANT: DO NOT SCRATCH OR NICK THE ROD. THIS WOULD CAUSE THE CYLINDER TO LEAK.**

1. INSTALL THE STUD INTO THE CYLINDER ROD WITH LOCTITE. THE SHORTER END OF THE STUD GOES INTO THE ROD.
2. INSTALL THE FOOT, PIVOT BALL, ETC. AS SHOWN.
3. TIGHTEN THE LOCKNUT UNTIL THE FOOT IS SNUG BUT STILL ABLE TO PIVOT. THE FOOT SHOULD NOT BE LOOSE.