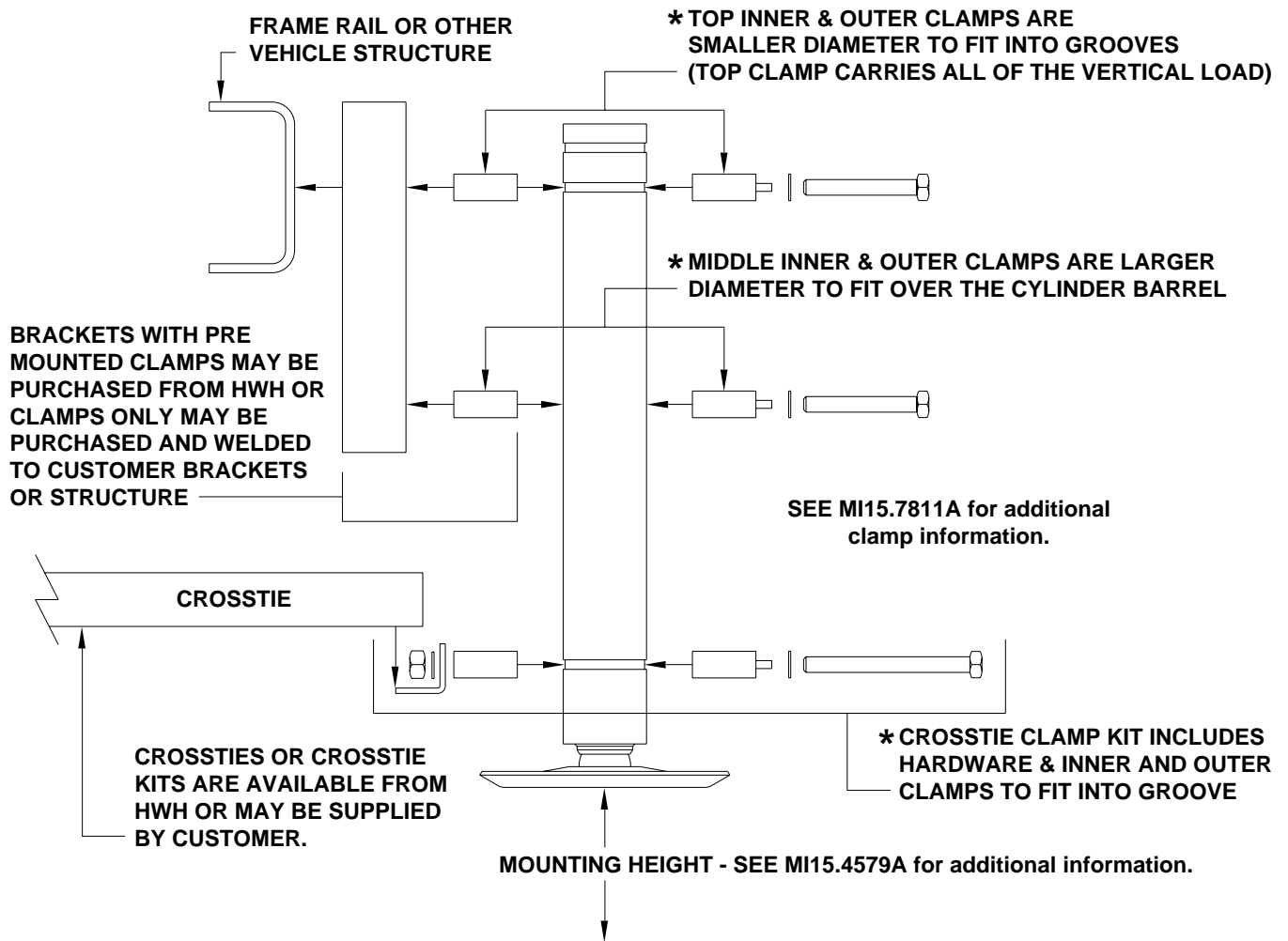


COMMON MOUNTING CONFIGURATIONS OF CLAMP STYLE POWER-EXTEND/SPRING-RETRACT JACKS

Following are some common mounting configurations for clamp style spring retract jacks. These are offered as concepts not as specific designs or instructions. Specific brackets and jacks will vary with capacity, stroke and design variations. Consult chassis or vehicle manufacturer for information on welding or bolting to vehicle. Brackets and vehicle connections must withstand vertical loads as well as horizontal loads.

BASIC UPPER BRACKET & CROSSTIE MOUNTING - common for motorized & towable vehicles



* The clamps are designed to allow slight clearance when fully tightened. This eliminates the possibility of any "squeeze" on the cylinder that could affect the operation of the jack. Check the jack grooves and the clamps for any debris that could cause a "squeeze" when the clamps are tightened. The jack can be slightly loose in the clamps fully tightened.