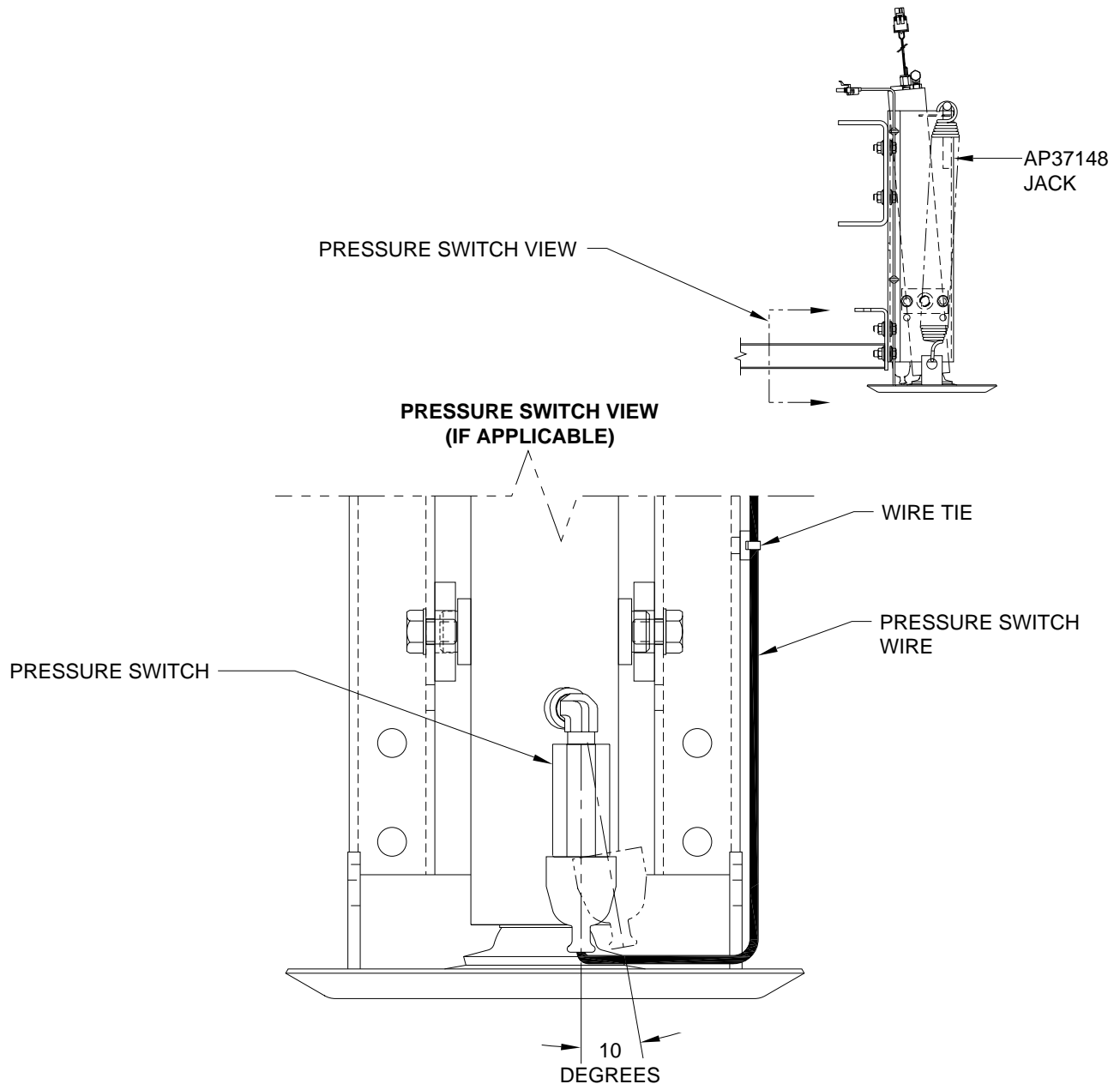

PRESSURE SWITCH INSTALLATION FOR AP37148 JACK ASSEMBLY

NOTE: INSTALL PRESSURE SWITCH ON JACK CYLINDER BEFORE MOUNTING CYLINDER ON JACK WRAPPER.



MOUNT PRESSURE SWITCH STRAIGHT VERTICAL AS SHOWN. THE PRESSURE SWITCH CAN BE ROTATED RIGHT 10 DEGREES BUT IT MUST NOT BE ROTATED LEFT OF VERTICAL. ATTACH THE PRESSURE SWITCH WIRE TO THE JACK PIVOT BRACKET AND SECURE WITH WIRE TIES AND ANCHORS. USE 1/4" DIAMETER HOLES IN PIVOT BRACKET TO MOUNT ANCHORS. MAKE SURE JACK CAN PIVOT FREELY WITHOUT DAMAGING THE PRESSURE SWITCH OR PINCHING THE PRESSURE SWITCH WIRE.

CAUTION: Follow CAUTIONS in Operator's and Installation Manuals concerning working under vehicles.

**MI15.99
31AUG07**