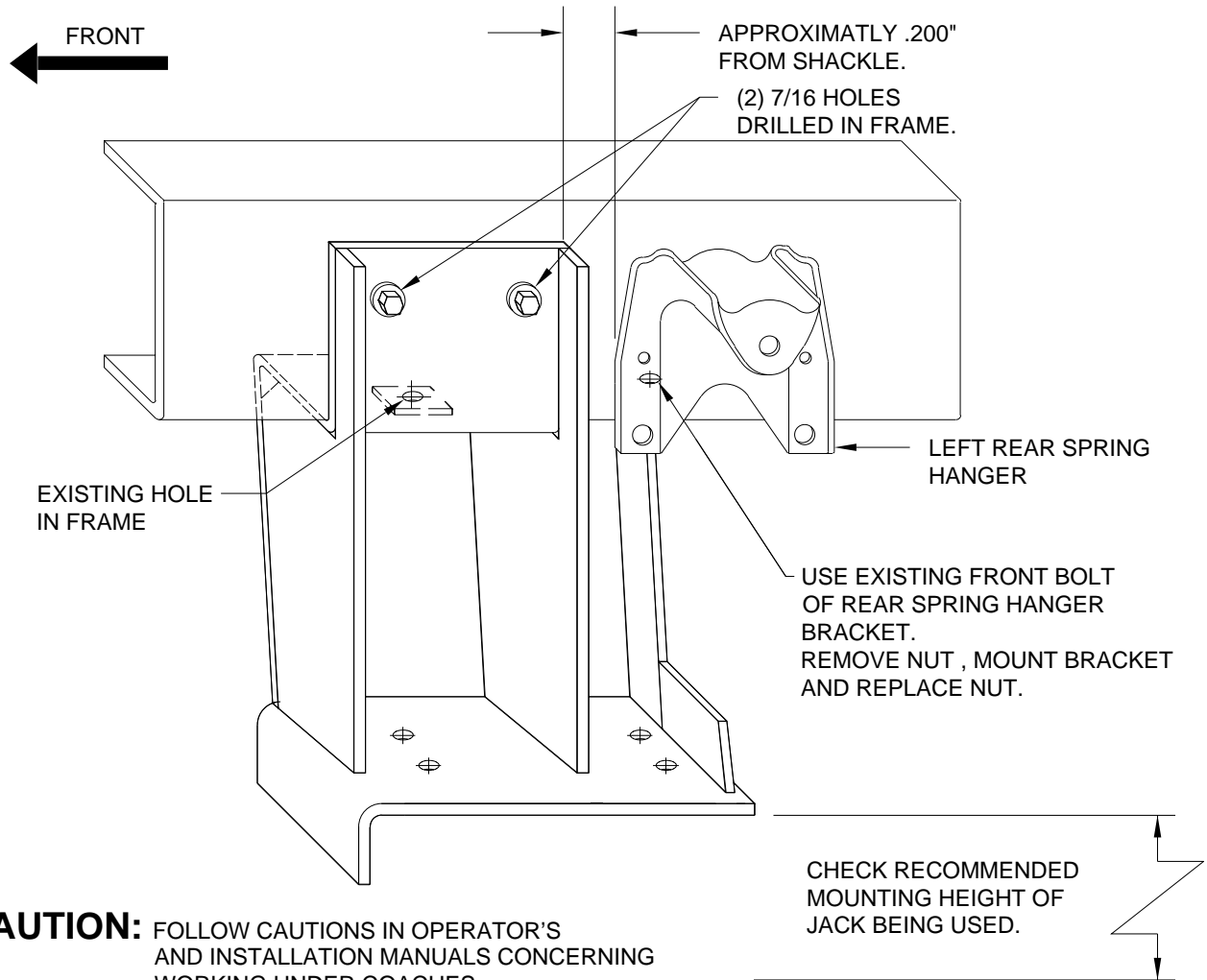


MOUNTING DIAGRAM

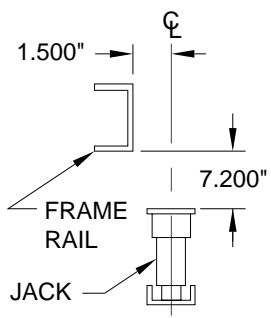
CHEVY P30 FRONT ENGINE : REAR BOLT ON BRACKET SPRING UNDER SPRING HANGER

**BEGINNING IN 1993 ON CHASSIS WITH
14,500#, 14,800#, AND 16,000# GVWR**

NOTE : EXHAUST PIPE CANNOT COME OUT BEHIND REAR AXLE. FOR USE OF THIS BRACKET HAVE COACH OWNER TAKE COACH TO A PROFESSIONAL MUFFLER SHOP.



CHECK RECOMMENDED MOUNTING HEIGHT OF JACK BEING USED.



- | |
|--|
| <p>AP0506 BRACKET KIT CHEVY REAR
 (1) AP0507 BRACKET LR
 (1) AP0508 BRACKET RR
 (1) AP0509 HARDWARE KIT</p> |
|--|