

# Mounting Bracket Kit: Kick-Down Jacks

**Application:** For mounting Kick-Down Jacks on the REAR OF FORD F53 chassis, 1997 and older, with 16" TIRES and a stock single axle or MOR/ryde "Add On" tag axle. Rear bracket.

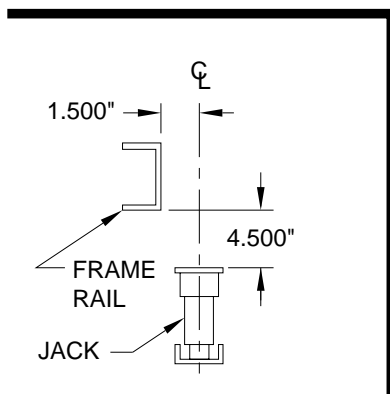
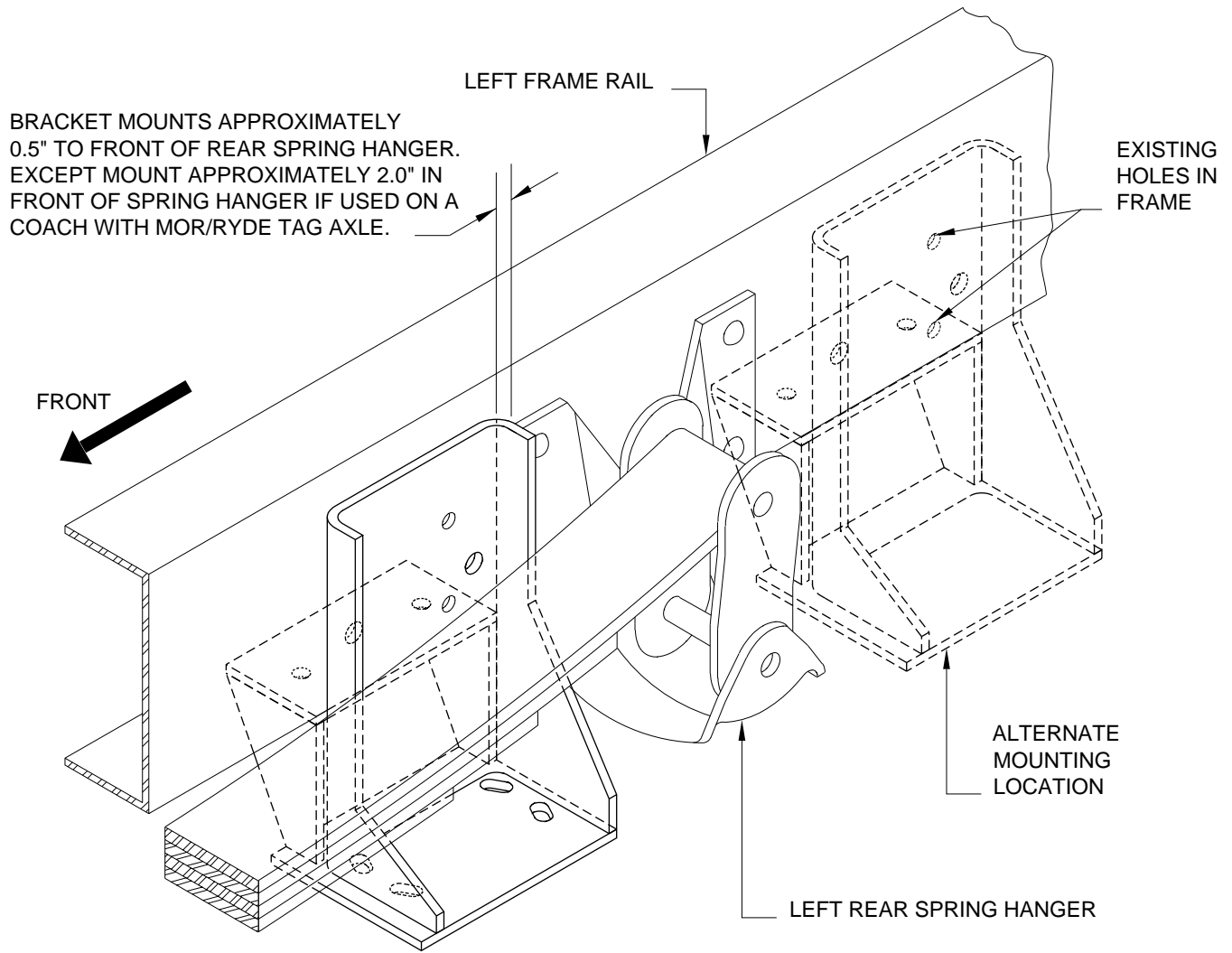
**Mfr. #:** AP6957 Bracket Kit Ford Rear

**Includes:** 1 - AP6830 Bracket Right Rear

1 - AP6829 Bracket Left Rear

1 - AP7089 Hardware Kit

**M.S.R.P.:** See Item Price Listing



CHECK RECOMMENDED MOUNTING HEIGHT OF JACK BEING USED.

**NOTE:** IF JACK IS TOO CLOSE TO TAIL PIPE, HAVE COACH OWNER TAKE COACH TO A PROFESSIONAL MUFFLER SHOP.

**CAUTION:** Follow CAUTIONS in Operator's and Installation Manuals concerning working under vehicles.

MI25.1175  
16FEB01