

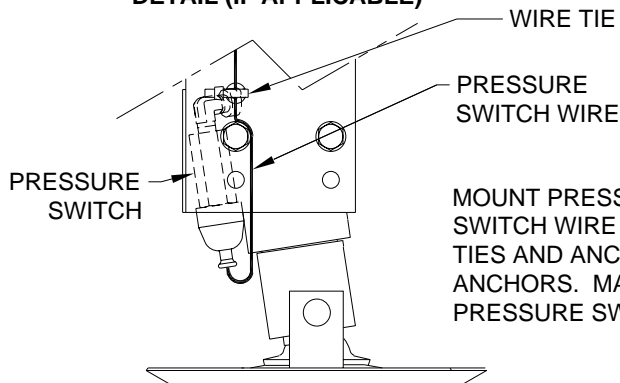
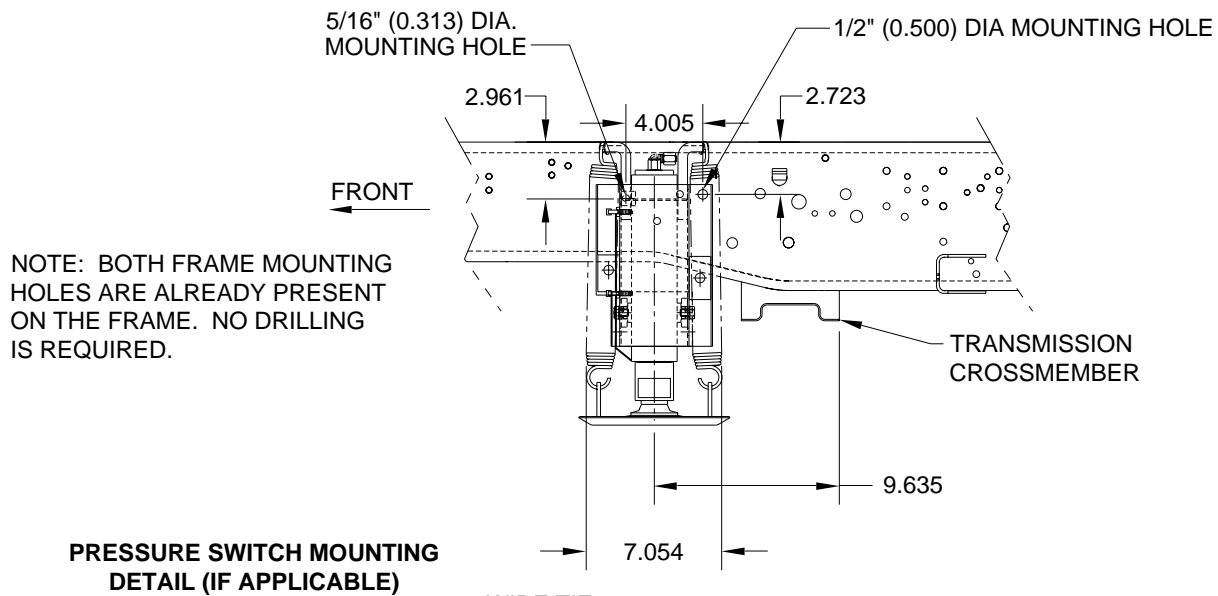
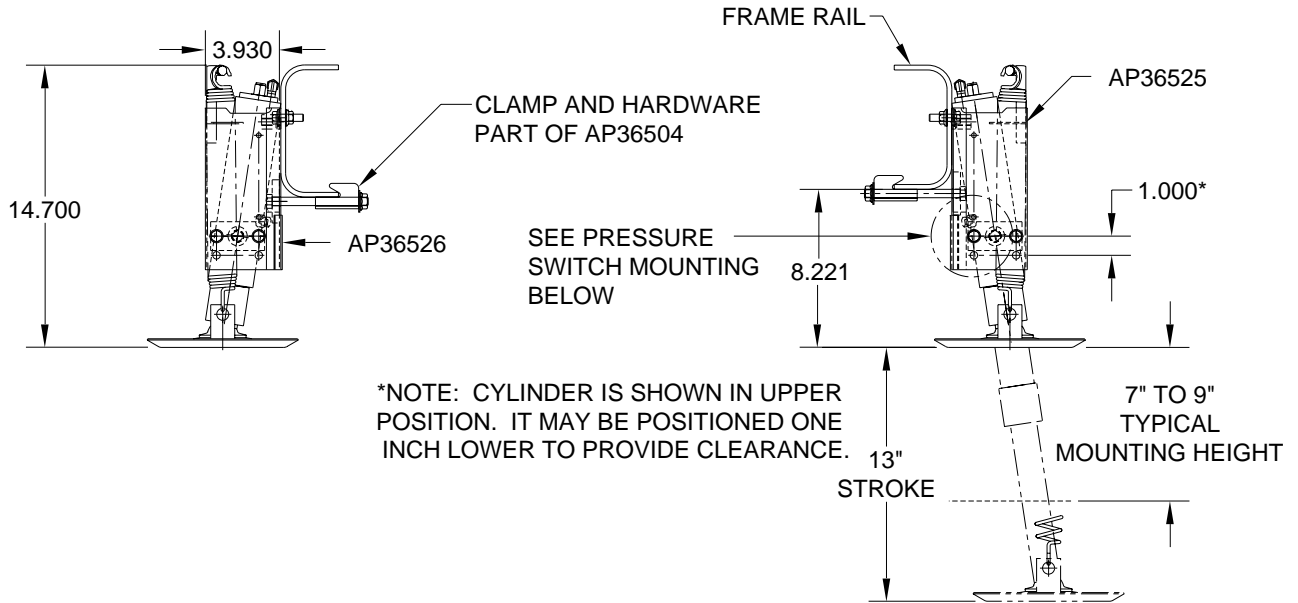
4000# Jack Kit: Straight-Acting Jacks

Application: For front of Ford E350/E450 Chassis.

Mfr. #: AP36364 4000# Jack Kit

Includes: 1 - AP36525 4000# x 13" Stroke Jack Right Hand
 1 - AP36526 4000# x 13" Stroke Jack Left Hand
 1 - AP36504 Hardware/Clamp Kit

M.S.R.P.: See Item Price Listing



MOUNT PRESSURE SWITCH DOWNWARD AS SHOWN. ATTACH PRESSURE SWITCH WIRE TO THE JACK PIVOT BRACKET AND SECURE WITH WIRE TIES AND ANCHORS. USE 1/4" DIA HOLES IN PIVOT BRACKET TO MOUNT ANCHORS. MAKE SURE JACK CAN PIVOT FREELY WITHOUT DAMAGING THE PRESSURE SWITCH OR PINCHING THE PRESSURE SWITCH WIRE.

NOTE: ALL DIMENSIONS ARE APPROXIMATE

CAUTION: Follow CAUTIONS in Operator's and Installation Manuals concerning working under vehicles.

**MI25.1199
02FEB07**