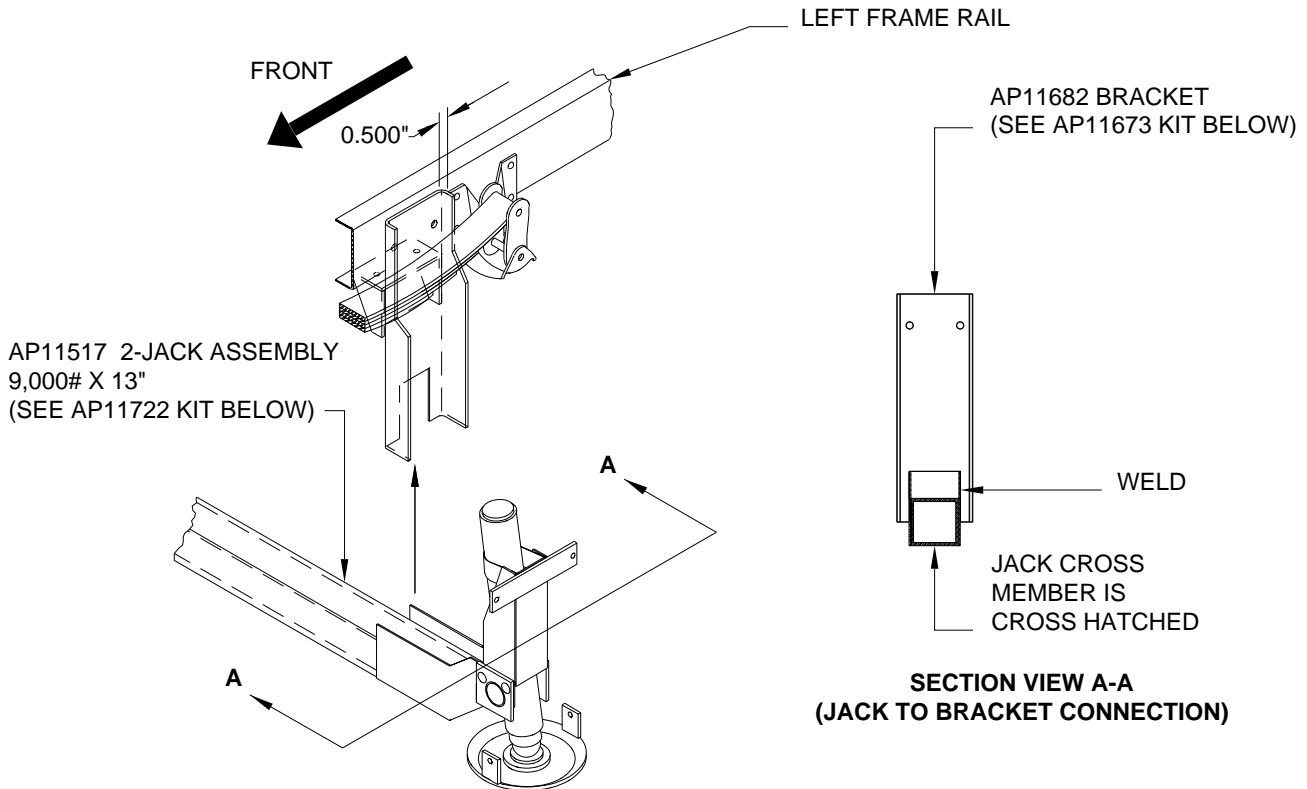
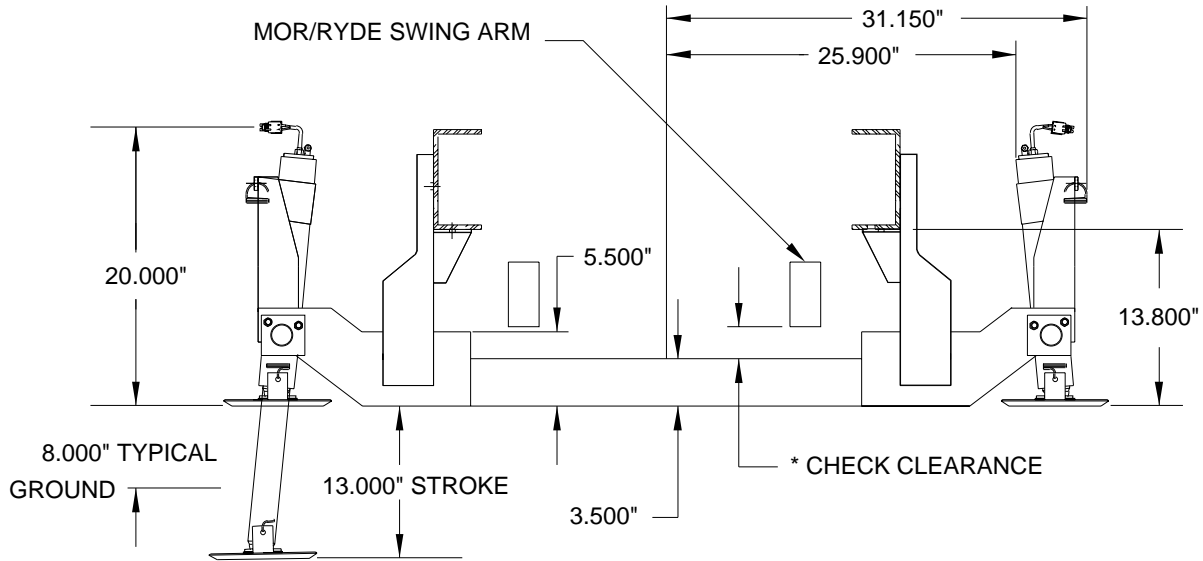


Adapter Kit and 9,000# Jack Kit: Straight-Acting Jacks

Application: For mounting Straight-Acting Jacks on REAR OF FORD F53 chassis, 1997 and older with 16" TIRES and stock single axle or MOR/ryde "Add On" tag axle 1995 to 1997.

Mfr. #: AP11673 Adapter Kit F53
Includes: 2 - AP11682 Bracket
 1 - AP7089 Hardware Kit
M.S.R.P.: See Item Price Listing

Mfr. #: AP11722 Jack Kit
Includes: 1 - AP11517 2-Jack Assembly
M.S.R.P.: See Item Price Listing



THE ABOVE DRAWING SHOWS JACKS MOUNTED OUTBOARD ON THE REAR SPRING HANGERS ON A FORD F53.

NOTE: EXHAUST PIPE CANNOT COME OUT BEHIND REAR AXLE. FOR USE OF THIS BRACKET, HAVE COACH OWNER TAKE COACH TO A PROFESSIONAL MUFFLER SHOP.

* CLEARANCE BETWEEN TAG AXLE SWING ARM AND CROSS TIE SHOULD BE CHECKED WITH TAG AXLE AT FULL EXTENSION.

CAUTION: Follow CAUTIONS in Operator's and Installation Manuals concerning working under vehicles.

MI25.4255
16FEB01