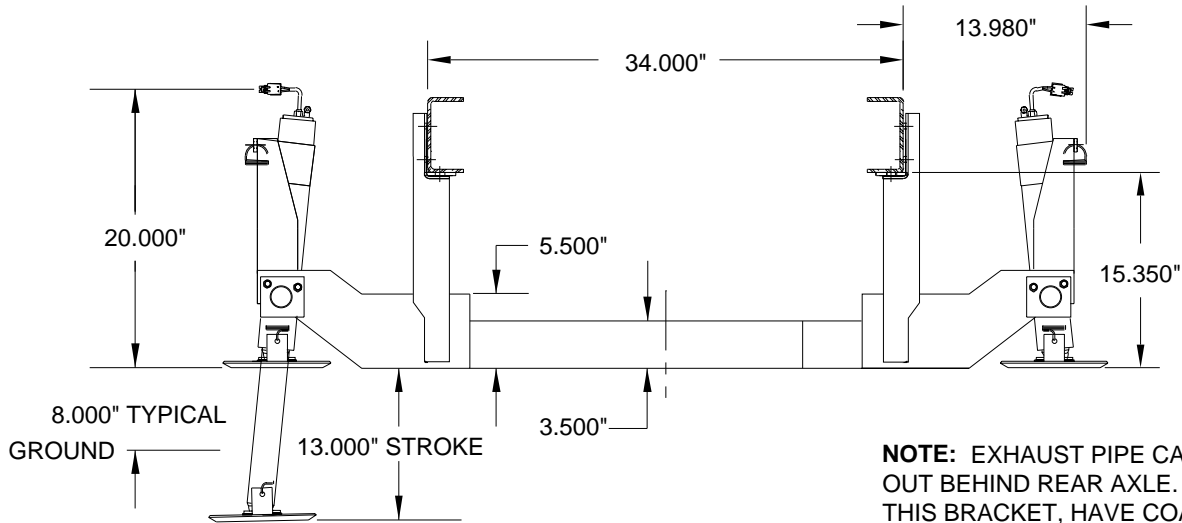


Adapter Kit and 9,000# Jack Kit: Straight-Acting Jacks

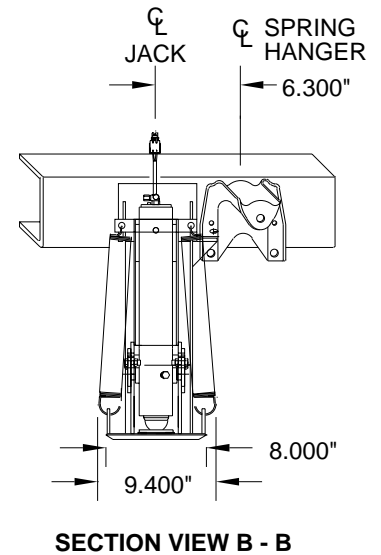
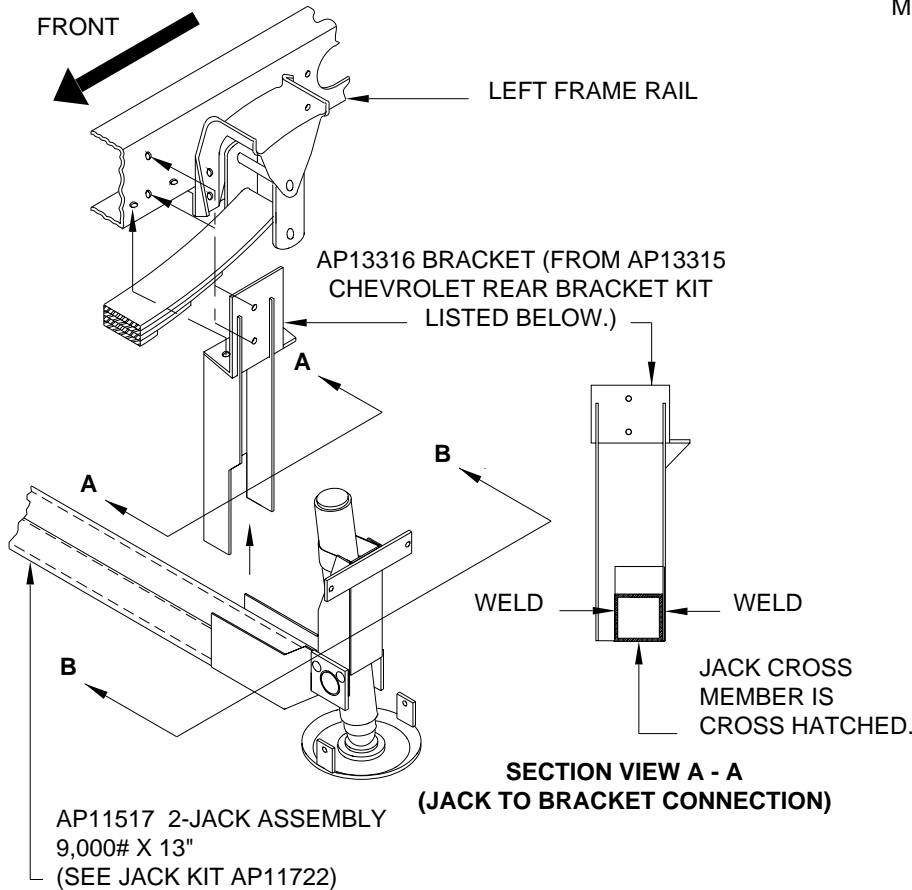
Application: For mounting Straight-Acting Jacks on the REAR OF CHEVY P30 chassis, 1993 or newer with a GVWR OF 14,500#, 14,800# or 16,000# and a stock single axle suspension.

Mfr. #: AP13315 Adapter Kit P30
Includes: 1 - AP13316 Bracket Left Rear
 1 - AP13317 Bracket Right Rear
 1 - AP0922 Hardware Kit
M.S.R.P.: See Item Price Listing

Mfr. #: AP11722 Jack Kit
Includes: 1 - AP11517 2-Jack Assembly
M.S.R.P.: See Item Price Listing



NOTE: EXHAUST PIPE CANNOT COME OUT BEHIND REAR AXLE. FOR USE OF THIS BRACKET, HAVE COACH OWNER TAKE COACH TO A PROFESSIONAL MUFFLER SHOP.



ABOVE DRAWING SHOWS JACKS MOUNTED OUTBOARD OF THE REAR SPRING HANGERS ON A CHEVROLET P30. THE JACK ASSEMBLY TIES UNDER THE FUEL TANK TO MOUNT THE LIFTING CYLINDERS OUTBOARD OF THE SPRING HANGERS.

CAUTION: Follow CAUTIONS in Operator's and Installation Manuals concerning working under vehicles.

MI25.4261
11JAN01