

Cross Tie Kit: Straight-Acting Jacks

Application: For mounting Straight-Acting Jacks.

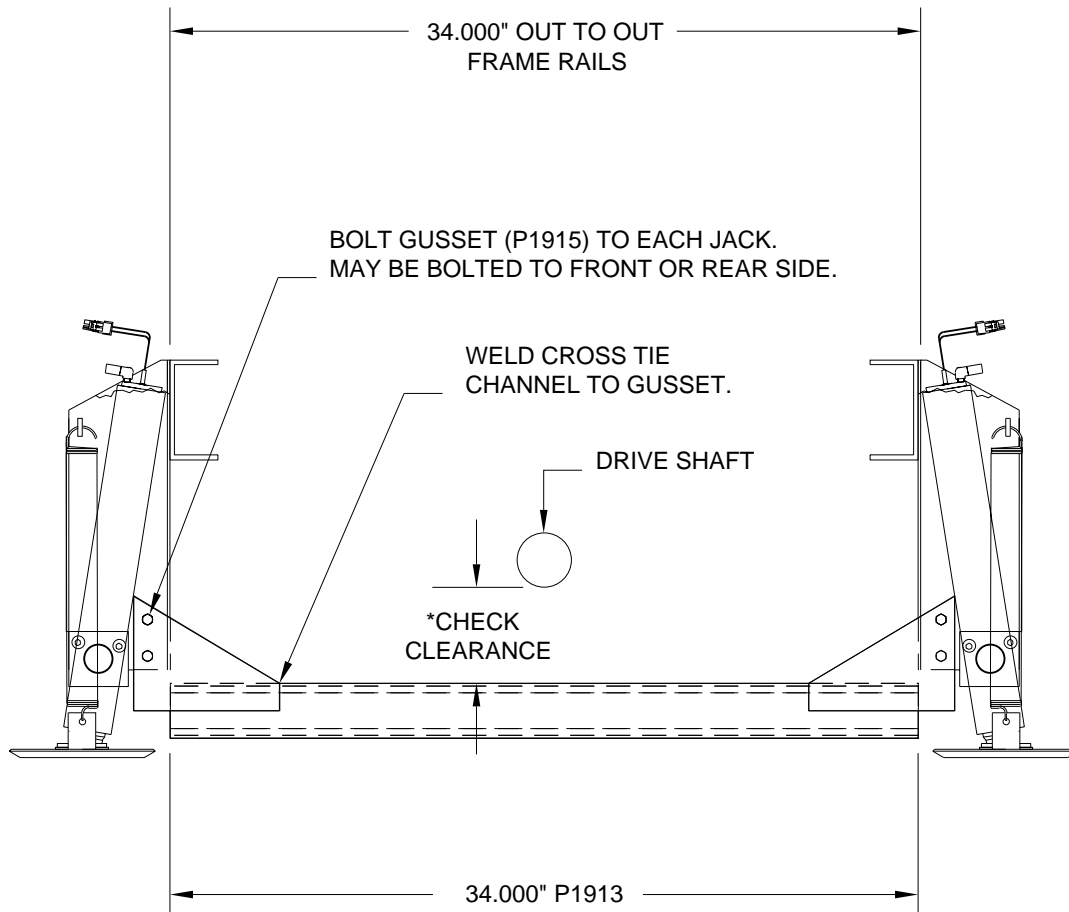
Mfr. #: AP2143 Cross Tie Kit 34"

Includes: 1 - P1913 Channel 34"

2 - P1915 Gusset

1 - AP2042 Hardware Kit

M.S.R.P.: See Item Price Listing



* CLEARANCE BETWEEN DRIVE SHAFT
AND REAR CROSS TIE ON PUSHER
COACHES MUST BE CHECKED WHEN
AXLE IS MAXIMUM DISTANCE
FROM FRAME.

CAUTION: Follow CAUTIONS in Operator's and Installation Manuals concerning working under vehicles.

MI25.4330
10NOV00