

# INSTRUCTION SHEET - BLEEDING PROCEDURE FOR REMOTE MANIFOLDS AND / OR SYNC CYLINDERS WITH VALVING

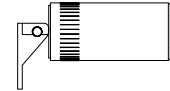
**IMPORTANT: THESE INSTRUCTIONS MUST BE FOLLOWED BEFORE EXTENDING OR RETRACTING ANY ROOM EXTENSION, LEVELING JACK OR ANY OTHER PIECE OF EQUIPMENT CONNECTED TO THE PRIMARY HYDRAULIC PUMP / MANIFOLD ASSEMBLY.**

**NOTE: Remote manifold and / or sync cylinder pressure and return lines may be connected or routed to fittings in different locations on the manifolds or sync cylinders for different assemblies. Refer to specific hydraulic connection diagrams for current hose routing and connection information.**

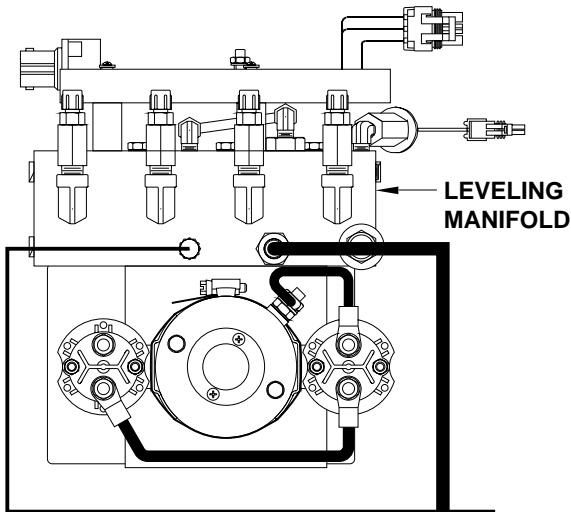
VALVE CLOSED



VALVE OPENED



PRIMARY HYDRAULIC PUMP/MANIFOLD ASSEMBLY



## REMOTE MANIFOLD / SYNC CYLINDER BLEEDING PROCEDURE

1. Make sure the pump reservoir is full.
2. Open both the cylinder EXTEND and cylinder RETRACT valves for all functions on the remote manifold or sync cylinder that is furthest from the pump in the hydraulic circuit.

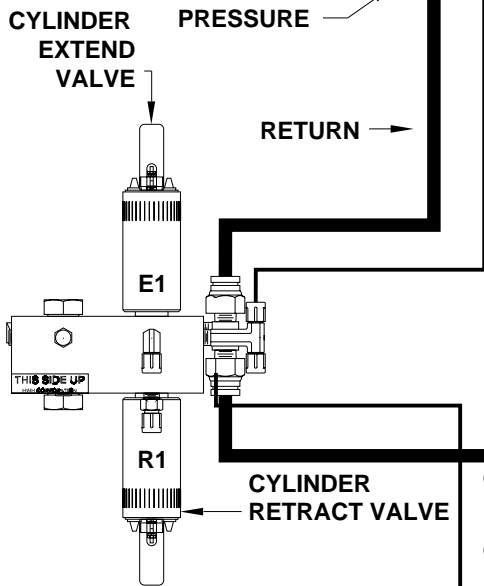
Note: Furthest component from the pump will only have one pressure line and one return line connected.

3. Use a control that will operate any function connected to a remote manifold or sync cylinder. DO NOT operate any room or jack that is not connected to the remote manifold or sync cylinder.
4. If operating a room, push and hold the room control switch to "EXTEND". If operating jacks, push and hold the manual UP arrow. The pump should run. Continue to keep the pump running for 30 to 60 seconds.

**IMPORTANT: MAKE SURE THE FLUID LEVEL IN THE RESERVOIR DOES NOT GET TOO LOW.**

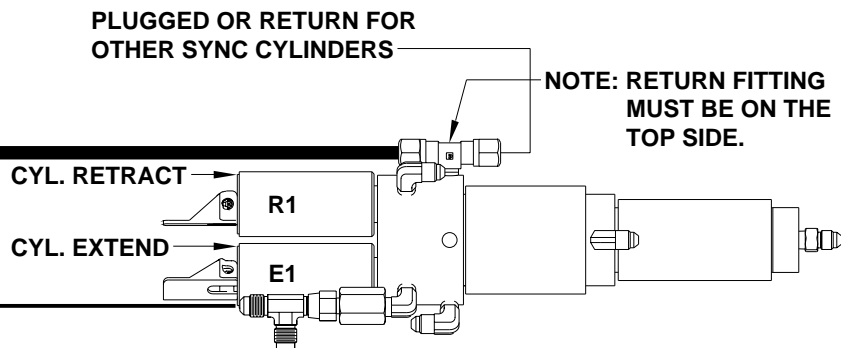
5. Close all of the valves and fill the pump reservoir as necessary.

**NOTE: Movement of the mechanism may occur while bleeding remote manifold or sync cylinder.**



PLUGGED OR RETURN FOR OTHER SYNC CYLINDERS

**NOTE: RETURN FITTING MUST BE ON THE TOP SIDE.**



REMOTE MANIFOLD ASSEMBLY (REMOTE MANIFOLD MAY HAVE MULTIPLE FUNCTIONS)

STEEL CAP OR PRESSURE FOR OTHER SYNC CYLINDERS (TEE FITTING MAY NOT BE USED)