

FINAL CHECK OUT

HWH LEVER-CONTROLLED LEVELING SYSTEM WITH FOUR LEVERS

MANUFACTURER _____ TYPE _____ DATE _____

VEHICLE ID# _____ INSPECTOR _____

CAUTION: DO NOT OPERATE THIS SYSTEM UNLESS FULLY INSTRUCTED ON SYSTEM SAFETY PROCEDURES.

1. MOUNTING BRACKET HEIGHT:

A. MAKE SURE JACKS ARE FULLY RETRACTED.

B. PULL JACK BY HAND TO THE VERTICAL POSITION AND CHECK DIMENSION A. (SEE FIGURE 1) DIMENSION "A" SHOULD BE 3 TO 5 INCHES FOR DRY NEW VEHICLES AND 2 TO 4 INCHES FOR WET VEHICLES WITH OVER 10,000 MILES.

[COMMENTS]

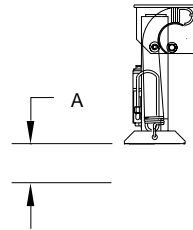


FIGURE 1

2. STORED POSITION STOP:

SPACE MUST BE ALLOWED FOR THE JACK TO FULLY EXTEND IN THE STORED (HORIZONTAL) POSITION (SEE FIGURE 2) ALSO BE SURE TIRES, SPRINGS, STEERING LINKAGE, ECT., DO NOT INTERFERE IF THE JACK IS FULLY EXTENDED IN THE STORE/TRAVEL POSITION.

[COMMENTS]

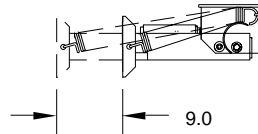


FIGURE 2

3. HOSE AND ELECTRICAL WIRING:

CHECK HOSES AND WIRING FOR KINKING OR RUBBING ON SHARP OBJECTS WHEN JACKS ARE OPERATED. ALSO CHECK THE ROUTING OF HOSES AND WIRING TO INSURE THEY WILL NOT BE EXPOSED TO TEMPERATURES GREATER THAN 200 DEG. F.

[COMMENTS]

NOTE: CHECK OIL LEVEL IN RESERVOIR BEFORE PROCEEDING. OIL SHOULD BE WITHIN ONE INCH OF THE TOP OF THE RESERVOIR. JACKS MUST BE FULLY RETRACTED TO CHECK THE HYDRAULIC OIL LEVEL.

4. POWER CONNECTION:

TURN THE IGNITION SWITCH TO THE OFF POSITION. TURN SWITCH ON THE LEVELING SYSTEM PANEL TO ON. MOVE LEVERS TO EXTEND POSITION. NO LIGHTS SHOULD BE ON NOR SHOULD THE PUMP RUN UNDER THESE CONDITIONS.

[COMMENTS]

OK REWORK

☐
☐
☐
☐
☐
☐
☐
☐

	OK	REWORK
5. PLUMBING AND WIRING CHECK: TURN IGNITION SWITCH TO THE ACC. POSITION. A. TURN SWITCH ON LEVELING SYSTEM TO ON. (AT THIS TIME 1 OR 2 YELLOW LIGHTS WILL COME ON IF THE VEHICLE IS OUT OF LEVEL. IF VEHICLE IS LEVEL NO LIGHTS WILL BE ON) B: MOVE RIGHT REAR LEVER TO EXTEND POSITION UNTIL VEHICLE RISES ABOUT TWO INCHES. RIGHT REAR RED LIGHT AND MASTER WARNING LIGHT (ON DASH) SHOULD NOW BE ON. RETRACT THE RIGHT REAR JACK AND REPEAT THIS CHECK WITH THE OTHER THREE JACKS. NOTE: BE SURE THE LIGHT WHICH COMES ON CORRESPONDS TO THE LEVER BEING OPERATED. [COMMENTS]	<input type="checkbox"/>	<input type="checkbox"/>
6. MOUNTING BRACKET CHECK: CHECK ALL MOUNTING BRACKETS AND WELDS FOR PHYSICAL DAMAGE. [COMMENTS]	<input type="checkbox"/>	<input type="checkbox"/>
7. VERTICAL ADJUSTMENT OF JACKS: MOVE EACH LEVER TO EXTEND THE JACK VERTICAL BUT NOT TOUCHING THE GROUND. CHECK AND SEE IF THE JACKS ARE PERPENDICULAR TO THE FLOOR OF THE VEHICLE. IF TILTED THEY NEED ADJUSTMENT. [COMMENTS]	<input type="checkbox"/>	<input type="checkbox"/>
8. SENSING UNIT: IF A YELLOW LIGHT IS ON, EXTEND CORRESPONDING JACK UNTIL THE LIGHT IS OUT, WHEN ALL YELLOW LIGHTS ARE OUT CHECK WITH A LEVEL TO SEE IF THE VEHICLE IS LEVEL. [COMMENTS]	<input type="checkbox"/>	<input type="checkbox"/>
9. JACK RETRACTION: POSITION ALL LEVERS IN THE RETRACT POSITION. CHECK TO SEE THAT EACH JACK IS FULLY RETRACTED AND IN THE STORED POSITION. [COMMENTS]	<input type="checkbox"/>	<input type="checkbox"/>
10. HYDRAULIC OIL LEVEL: CHECK RESERVOIR OIL LEVEL. OIL SHOULD BE WITHIN ONE INCH OF THE TOP OF THE TANK. IF OIL IS LOW DO NOT CONTINUE UNTIL THE TANK HAS BEEN FILLED. POWER UNIT COULD BE DAMAGED. JACKS MUST BE FULLY RETRACTED TO CHECK THE HYDRAULIC OIL LEVEL. [COMMENTS]	<input type="checkbox"/>	<input type="checkbox"/>