

# HWH® Travel Clamps

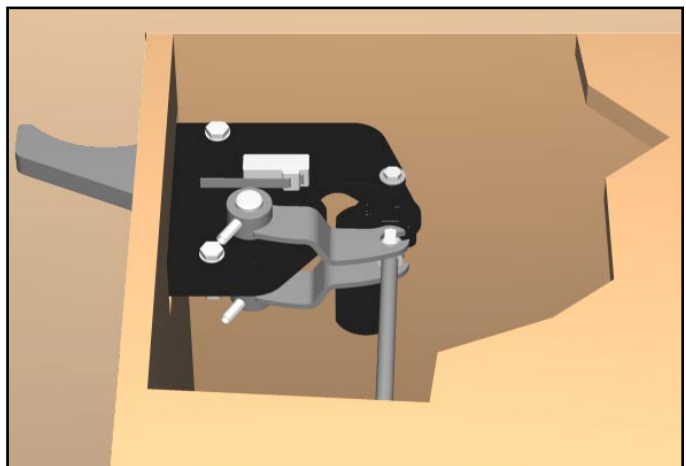
## Automatic Room Retention System

### HWH® Travel Clamps Features and Benefits

- Proven patented design and customer acceptance.
- Compact. Easily integrated into any room.
- Adaptable to any size room.
- Ideal for use with under-floor and in-floor slide-out mechanisms.
- Keeps retracted room secure at top corners.
- Clean, smooth exterior finish when Travel Clamps are retracted.
- Eliminates manual room retention devices.
- Weather resistant housing.
- Optional “one-button operation” of Travel Clamps and room extension system.
- HWH® rugged construction. Long life actuator and gearing.



The Travel Clamps are located inside the room, at both top corners.



Room in Travel Clamps extended.



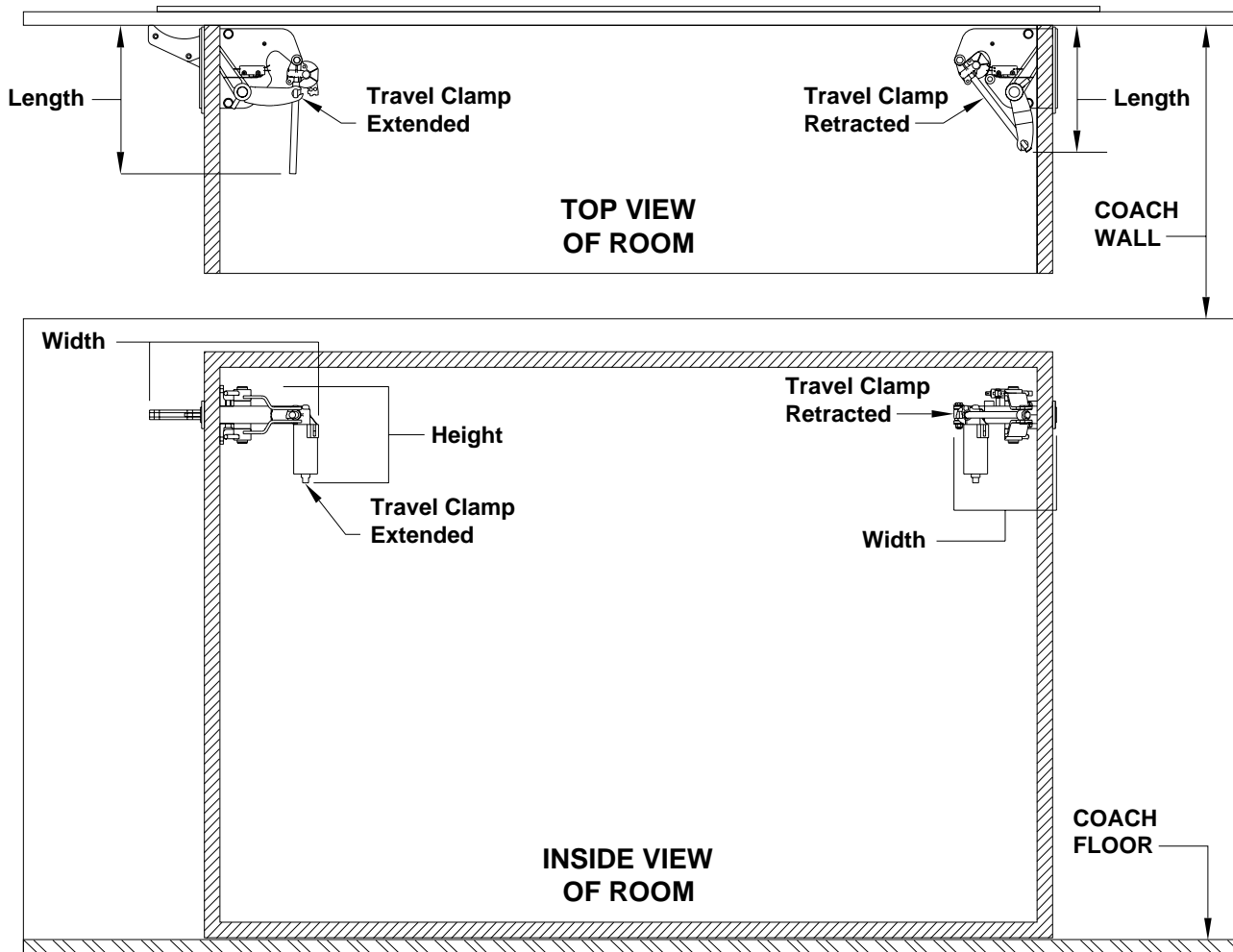
Web Video  
[www.hwh.com/ml29810.wmv](http://www.hwh.com/ml29810.wmv)

(On I-80, Exit 267 South) | 2096 Moscow Road | Moscow, Iowa 52760 | Phone: (800)321-3494 or (563)724-3396 | Fax: (563)724-3408  
Web: [www.HWH.com](http://www.HWH.com)

**STRONG, RELIABLE, HYDRAULIC POWER**

# Specifications & Features

## HWH® Travel Clamps (Patented)



### Specifications...

#### WEIGHTS (lbs.)

Each "Travel Clamp" Assembly (2) Approx. - 6

**Gross Weight** Approx. - 12

#### DIMENSIONS (in.)

Clamp Height (Extended & Retracted) 7.00

Clamp Width (Extended) 11.50

Clamp Length (Extended) 10.56

Clamp Width (Retracted) 7.81

Clamp Length (Retracted) 9.06

**LOAD PER CLAMP (lbs.)** 400

#### PRIMARY APPLICATIONS

Wall Mounted

Above Floor