

HWH® Lightweight Hydraulic 3,000 lb. Telescoping Pivoting Jack (Weighs only 14 pounds.)

*HWH Straight-Acting/Pivoting, (Power-Extend/Power-Retract) 3,000 lb. Telescoping Jacks
Straight-Acting jacks offer 4-Point BI-AXIS® leveling, great stability and a large pivoting footpad.*

3,000 lb. Jack shown in the fully retracted position. ▶



- Weighs only 14 pounds
- Measures 14.75" top-to-bottom
- Jack has a 13 inch stroke
- Easy bolt-on mounting
- Pivoting foot is bolted to rod

HWH® 3,000 lb. Jacks
Include the following features...

- Jack weighs only 14 pounds with a lifting capacity of 3,000 pounds. Enables vehicles with lower weight ratings to enjoy the benefits of a hydraulic leveling system with minimal added weight.
- Jacks can be used with any of the HWH® Control Systems.
- Jacks securely mount to the chassis without a need to weld onto the frame and will reduce the time required for installation.
- State-of-the-art corrosion protected hydraulic cylinders are designed for long life.
- Larger foot pads allow for maximum stability and resist sinking into soft ground.
- Jacks are retracted mechanically by means of double springs. This ensures the jacks can be raised in the loss of hydraulic or electrical power. Springs also keep jacks from drifting down during travel. (Springs keep jacks retracted.)
- Pivoting jack action allows coach sides to be lifted with minimal sliding of the jack foot (minimizes side-loading to the RV structure and jack leg). The outward angle braces the RV for maximum stability.

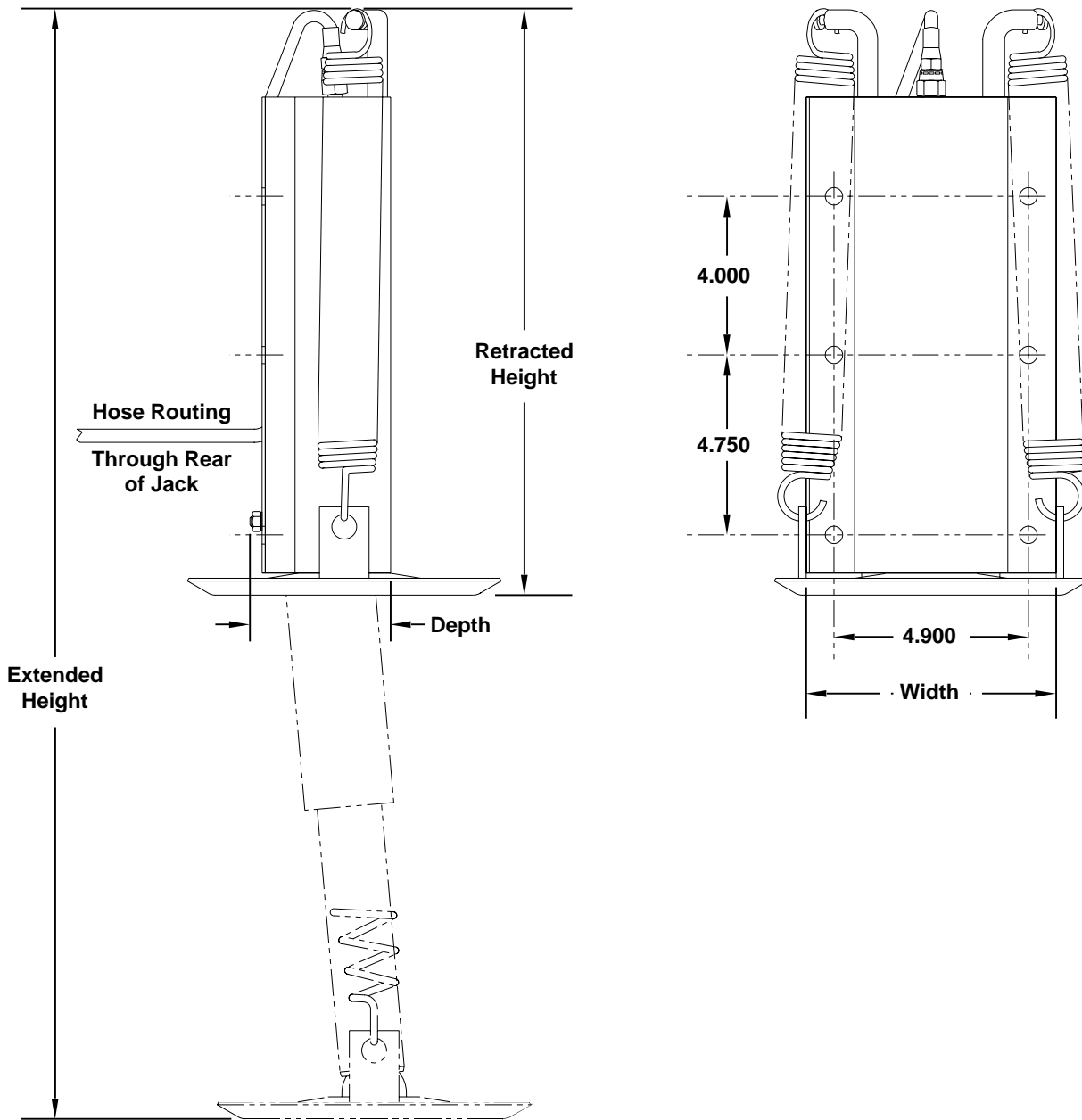


Taking you to the next level.

(On I-80, Exit 267 South)
2096 Moscow Road | Moscow, Iowa 52760
Phone: (800)321-3494 or (563)724-3396 | Fax: (563)724-3408
Web: www.HWH.com

Specifications & Features

HWH® 3000 lb. Pivoting Jack



Specifications...

WEIGHT (lbs.)	14.00
DIMENSIONS (in.)	
Width	6.30
Depth	3.55
Extended Height	28.00
Retracted Height	14.79
Stroke	13.00
LOAD * (lbs.)	3000 (Per Jack)
PIVOT ANGLE (Degrees)	5.00