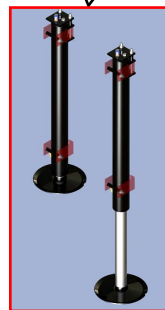
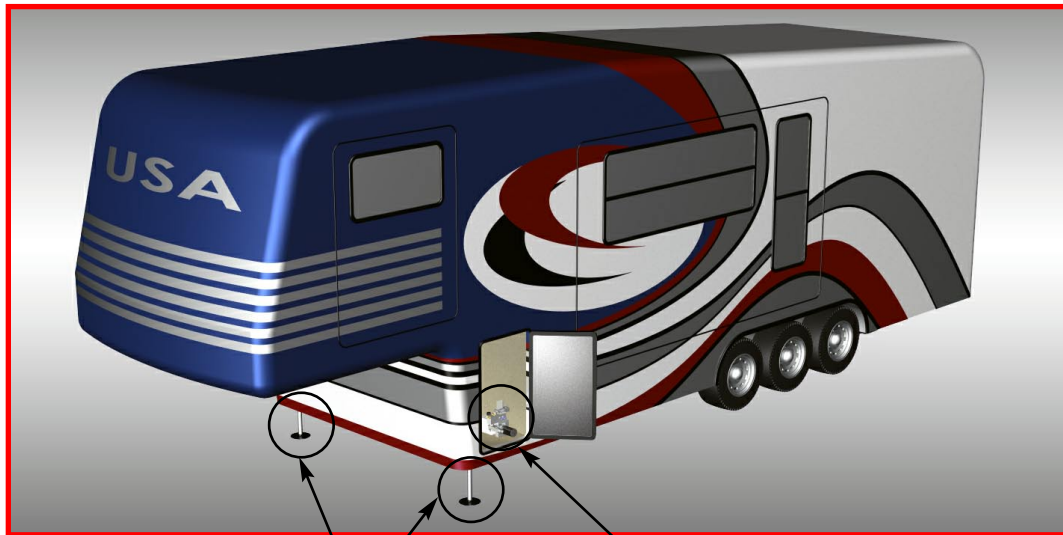


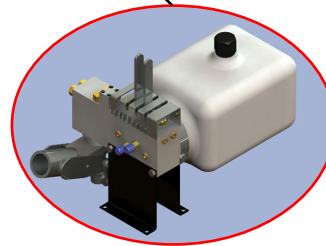
HWH[®] Straight-Acting (Power-Extend/Power-Retract) Hydraulic Landing Gear *Designed to replace mechanical landing gear*

AP43037 Landing Gear Package

**Featuring Hand Pump with Hydraulic Switches
&
Straight-Acting (Power-Extend/Power-Retract) Landing Gear**



**Straight-Acting
(Power-Extend/Power-Retract)
Hydraulic Landing Gear
with a lifting capacity of
7,000 lb. per jack**



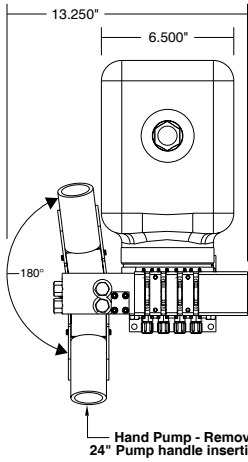
**Hand pump with
hydraulic switches
(no electric power is required)**



(On I-80, Exit 267 South) | 2096 Moscow Road | Moscow, Iowa 52760
Phone: (800)321-3494 or (563)724-3396 | Fax: (563)724-3408 | Web: www.HWH.com
Made in the USA

STRONG, RELIABLE, HYDRAULIC POWER

Specifications & Features
The HWH®: Swivel Hand Pump with Hydraulic Switch Control



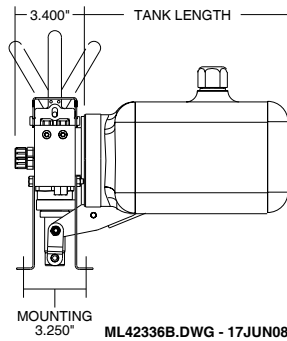
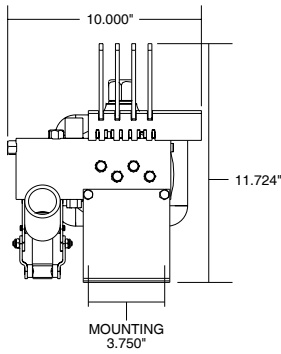
Up to four hydraulic switch controls will operate up to four one way jacks, four two way jacks or four room extensions or a combination there of.

Specifications...

WEIGHT (lbs.)	
Each Assembly	14

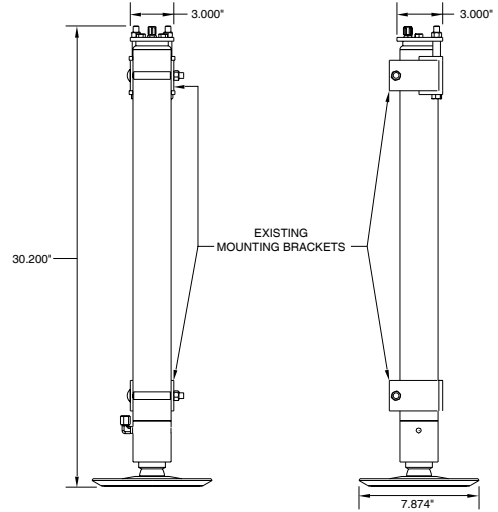
TANK LENGTH - OIL DELIVERY (Cubic inches)	
10.0" Tank	165 cu in
13.5" Tank	250 cu in
19.0" Tank	360 cu in

Hand Pump - Removable
 24" Pump handle insertion point



ML42336B.DWG - 17JUN08

Specifications & Features
HWH®: Straight-Acting (Power-Extend/Power-Retract) Jack
7,000 lb. Lift Capacity each Jack with a 21" Stroke



Specifications...

WEIGHTS (lbs.)	
Each Jack Assembly	36

DIMENSIONS (in.)	
Jack Width	2.500
Retracted Jack Height	30.200
Jack Stroke	21.000

LOAD PER JACK (lbs.)	7,000
-----------------------------	-------

PRIMARY APPLICATIONS	
Towables	

ML43043B
 ML43044B
 ML43045B
 ML43046B
 ML43047B

ML42935B.DWG - 12JUN12