

HWH[®] SpaceMaker[®]

Dual-Cylinder "Universal" Room Extension

Straight-Out Durable Light Weight (with HWH[®] Synchronizing cylinder)

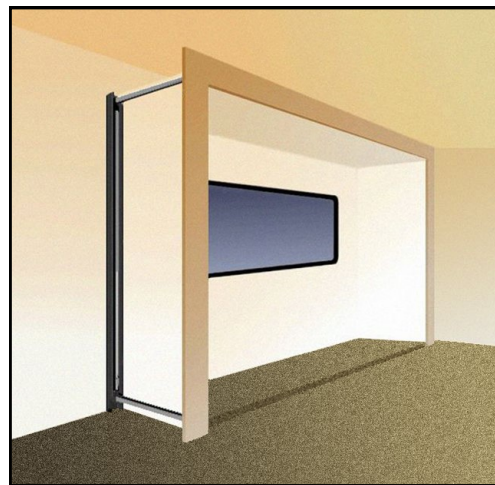
HWH[®] Dual Cylinder "Universal" Room Extension* is designed to simplify installation. New exclusive HWH[®] Inter-Locking Chains* are used to extend and retract the room and provides the coach with a clean exterior finish.

Features and Benefits

- Above-floor mounting eliminates the loss of valuable under-floor space.
- A durable light-weight room extension system for rooms up to 1,000 pounds.
- The room floor is suspended which eliminates the possibility of damage to the coach floor coverings.
- The Dual Cylinder "Universal" slide utilizes a four-point attachment, which draws all four corners in for a positive seal whether the room is extended or retracted.
- The HWH Synchronizing Cylinder allows for smooth, even extension and retraction of the room.
- No exposed hardware when the room is extended. The exteriors of the room and the coach have a clean, finished appearance.
- Ideal for use on closets, vanities and galleys.
- The mechanism is easily operated with the use of momentary switch.



Exterior of room and coach.



Interior view of room.



2096 Moscow Road, Moscow, IA 52760

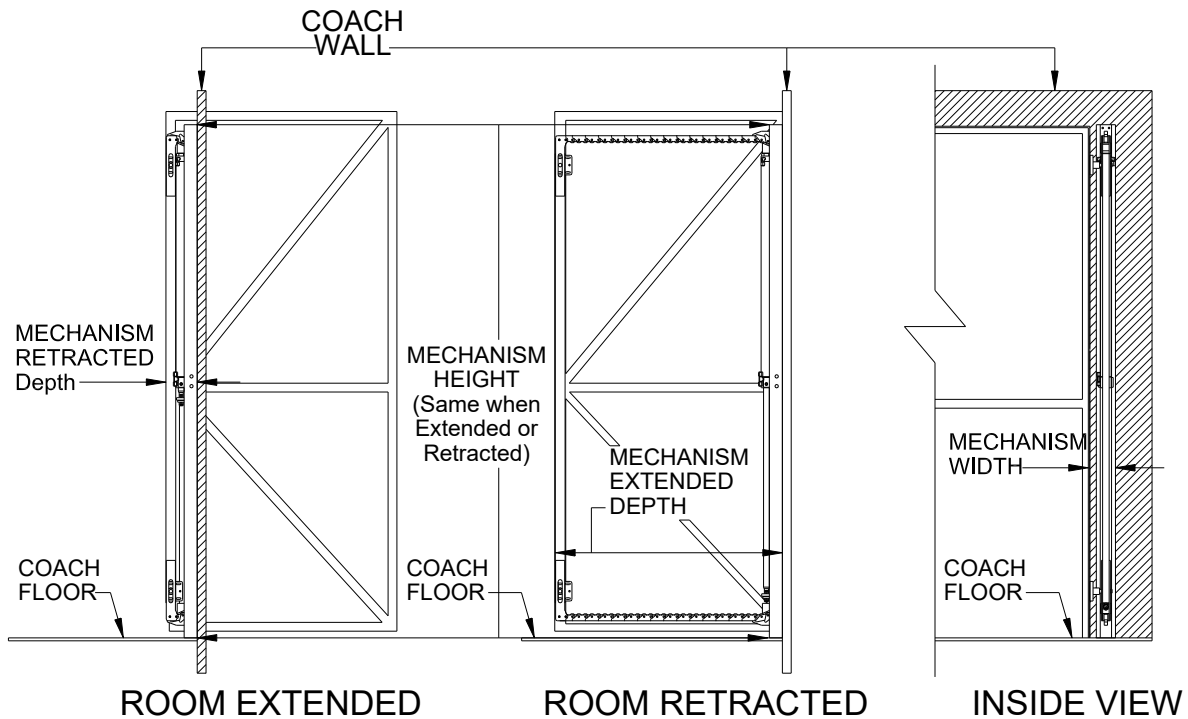
Ph: 800-321-3494 | Fax: 563-724-3408

www.HWH.com

STRONG, RELIABLE, HYDRAULIC POWER

Specifications & Features

The HWH® SpaceMaker®: Dual Cylinder “Universal” Room Extension Straight-Out Durable Light Weight (with HWH Synchronizing Cylinder)



Specifications...

WEIGHTS (LBS.):	
EACH “UNIVERSAL” ASSEMBLY (2)	23 TO 40 LBS
PUMP*	15.00
GROSS WEIGHT W/SYNCHRONIZING CYLINDER	110.00

DEMENSIONS:

HEIGHT	79.500	74.000	70.000
WIDTH	3.750	3.750	3.750
EXTENDED DEPTH	31.750	30.250	25.750
RETRACTED DEPTH	3.750	3.750	3.750
MAX EXTENSION OF ROOM	28	26.50	22

LOAD PER MECHANISM** (LBS)	500.00
TOTAL LOAD** (LBS)	1,000.00

PRIMARY APPLICATIONS
Mechanism - Wall Mounted

*If coach is equipped with an HWH® Leveling System, pump can be shared.

**Load includes all occupants, cargo and permanent fixtures resting on room.