



HWH[®] AP53803

Class C Leveling System

Ford E350/E450 Cutaway Chassis (1998 and newer) (Class C)

Will not fit 2007 & newer Winnebago Aspect & Itasca Cambria Ford E450/E350 Cutaway Chassis (Class C)

Joystick Manual Control with Straight-Acting Jacks



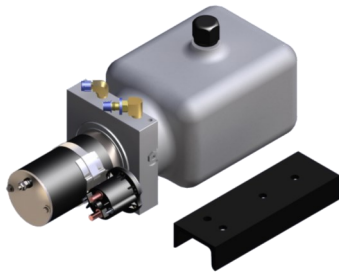
AP36364 Front Jack Kit

Two Straight-Acting (Power-Extend/Spring-Retract) Jacks with a lifting capacity of 4,000 lbs. per jack Standard Profile



AP53806 Rear Jack Kit (Clamp-On)

Two Straight-Acting (Power-Extend/Spring-Retract) Jacks with a lifting capacity of 6,000 lbs. per jack on the rear



AP37171 Power Unit Kit

225 Series, 12 Volt DC Motor and Pump
125 amp - 3,000 psi relief Pressure / Return Parts for joystick controlled system.



AP52993 Rear Cross Tie Kit



AP37511 Control/Hose Kit

225 Series, Joystick-Controlled Hydraulic Leveling System with BI-AXIS[®] Control, Integrated Indicator Light Panel, Leveleze[®] Light Package, Harness & Hydraulic Hoses



www.HWH.com



2096 Moscow Road, Moscow, IA 52760 Ph: 800-321-3494 | Fax: 563-724-3408



Installation Info

STRONG, RELIABLE, HYDRAULIC POWER

ML51120_AP53803.PUB 12OCT15