



INSTALLATION INSTRUCTIONS

SPRINTER CHASSIS 5 Cylinder Diesel

FEATURING:

Pump Bracket Installation

Front Jack Installation

Rear Jack Installation

Crosstie Installation

HWH CORPORATION

(On I-80, Exit 267 South)

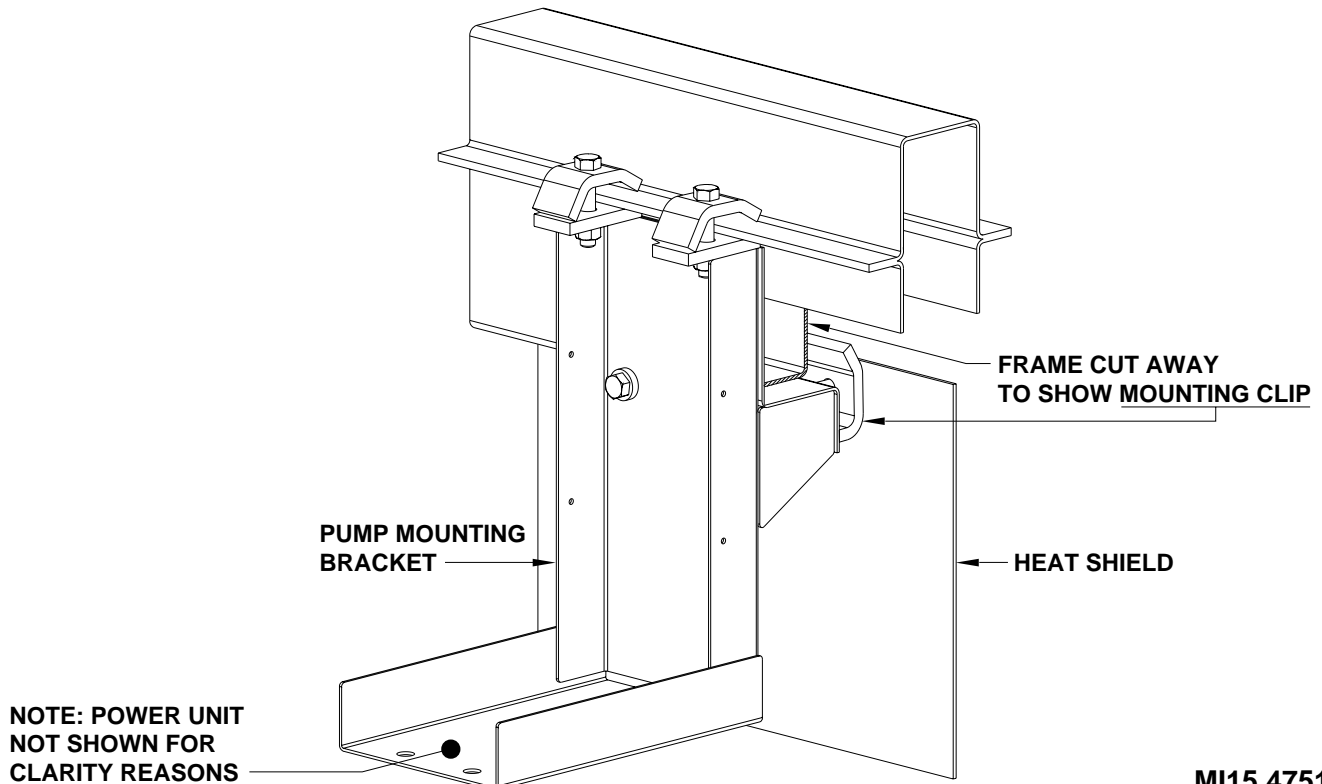
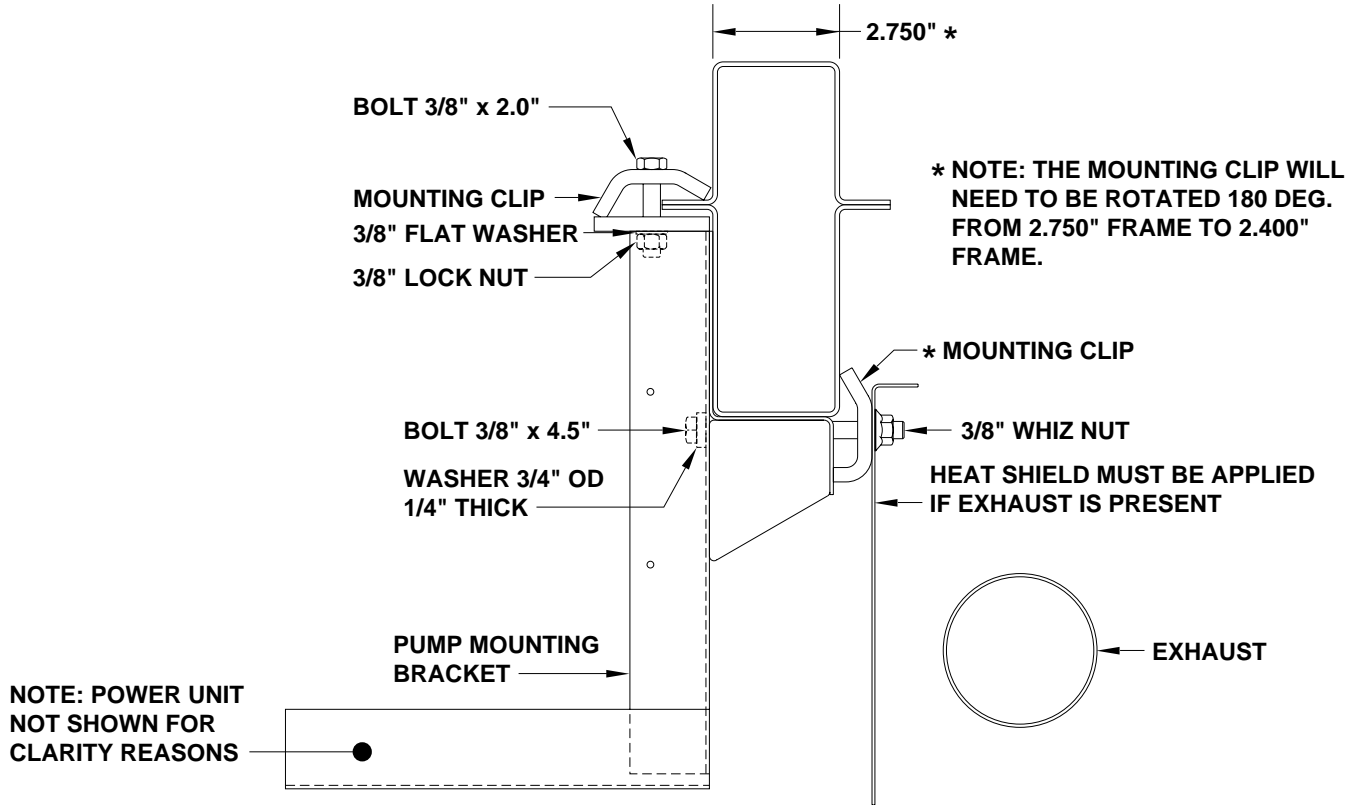
2096 Moscow Road | Moscow, Iowa 52760

Ph: 800/321-3494 (or) 563/724-3396 | Fax: 563/724-3408

www.hwh.com

PUMP MOUNTING - SPRINTER CHASSIS INSTRUCTION SHEET

AP53008 POWER UNIT AND MOUNTING BRACKET KIT INCLUDES:
POWER UNIT, AP52940 PUMP MOUNTING BRACKET AND INDICATED HARDWARE ITEMS



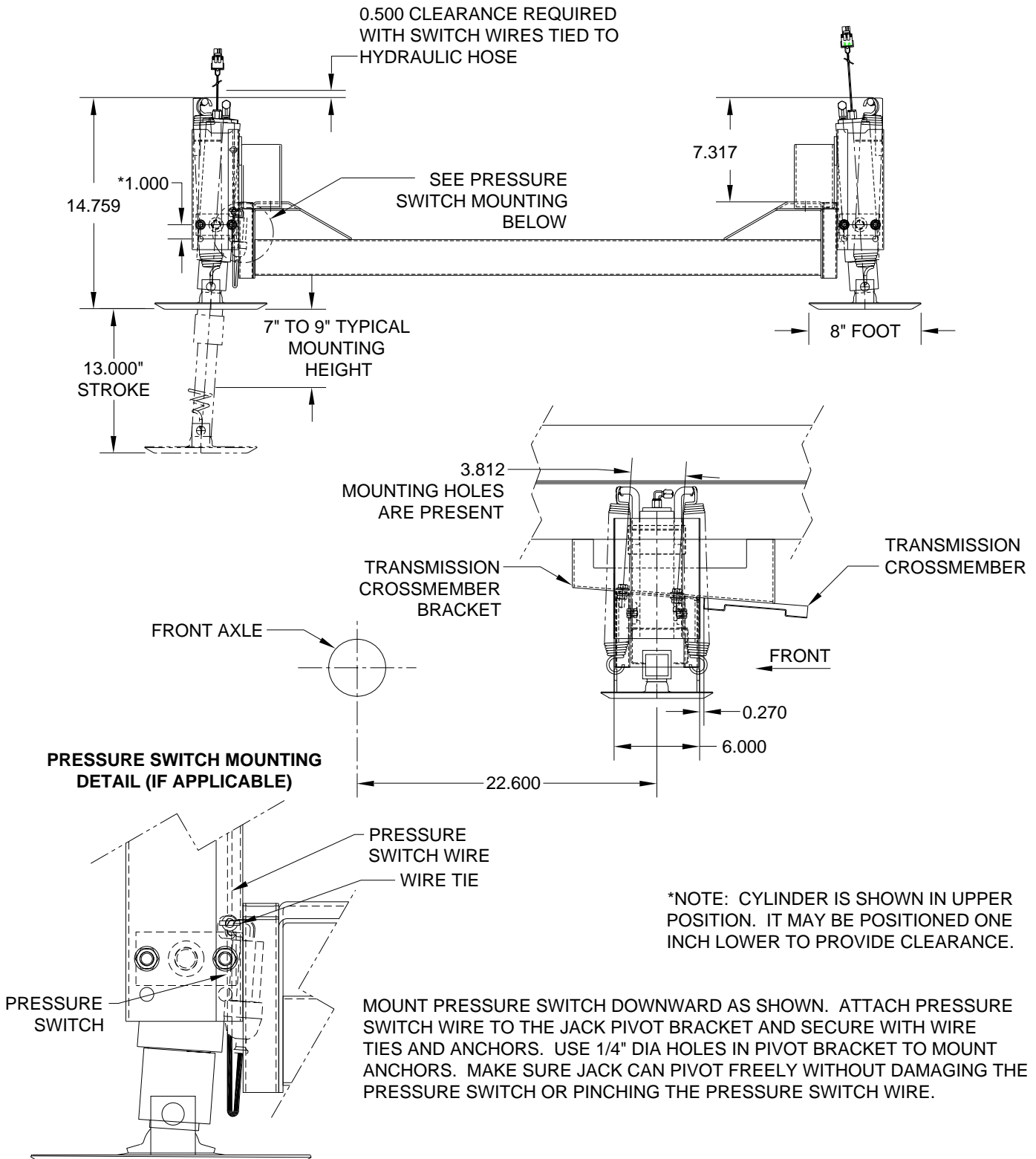
4000# Jack Kit: Straight-Acting Jacks

Application: For front of 2007 and earlier Dodge Sprinter 2500 and 3500 chassis with the 5 cylinder diesel engine.

Mfr. #: AP37523 4000# Jack Kit

Includes: 1 - AP37064 4000# x 13" Stroke 2 Jack Assy.
1 - AP37526 Hardware Kit

M.S.R.P.: See Item Price Listing



NOTE: ALL DIMENSIONS ARE APPROXIMATE

CAUTION: Follow CAUTIONS in Operator's and Installation Manuals concerning working under vehicles.

**MI25.1077
20AUG07**

6000# Jack Kit: Straight-Acting Jacks

Application: For rear of 2007 and earlier Dodge Sprinter 3500 chassis with the 5 cylinder diesel engine.

Mfr. #: AP37524 6000# Jack Kit

Mfr. #: AP37525 Crosstie Kit

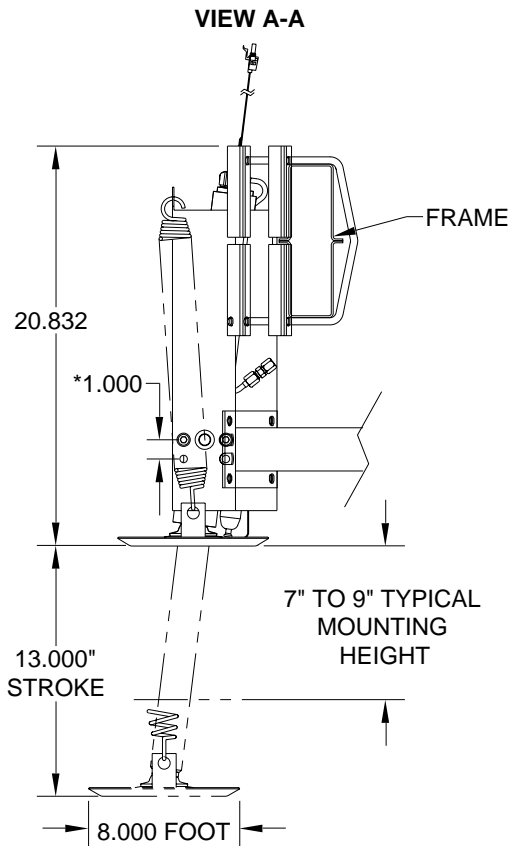
Includes: 1 - AP37065 6000# x 13" Stroke Left Jack Assy.
 1 - AP37066 6000# x 13" Stroke Right Jack Assy.
 1 - AP37059 U-Bolt Hardware Kit
 1 - AP37179 Hardware Kit

Includes: 1 - AP37029 Crosstie
 1 - AP37179 Hardware Kit

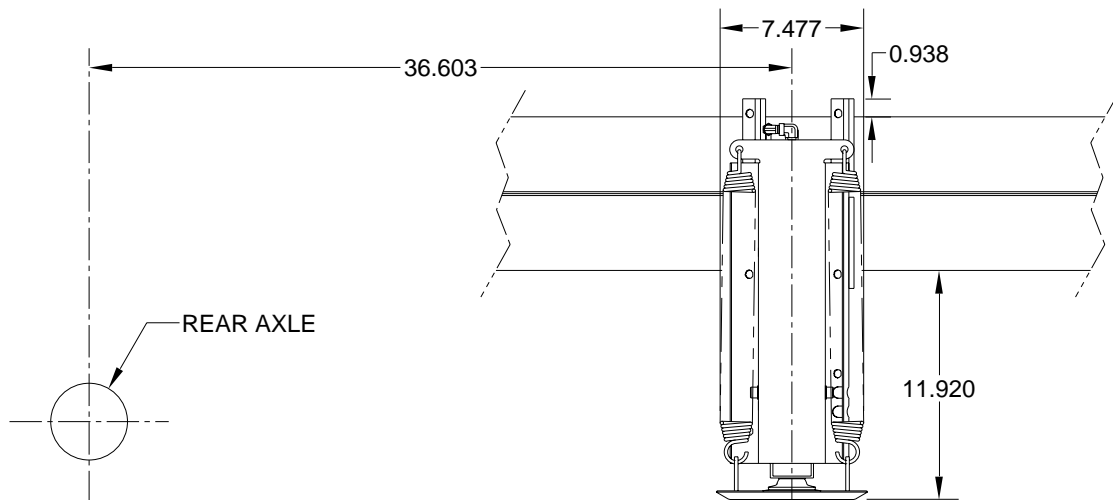
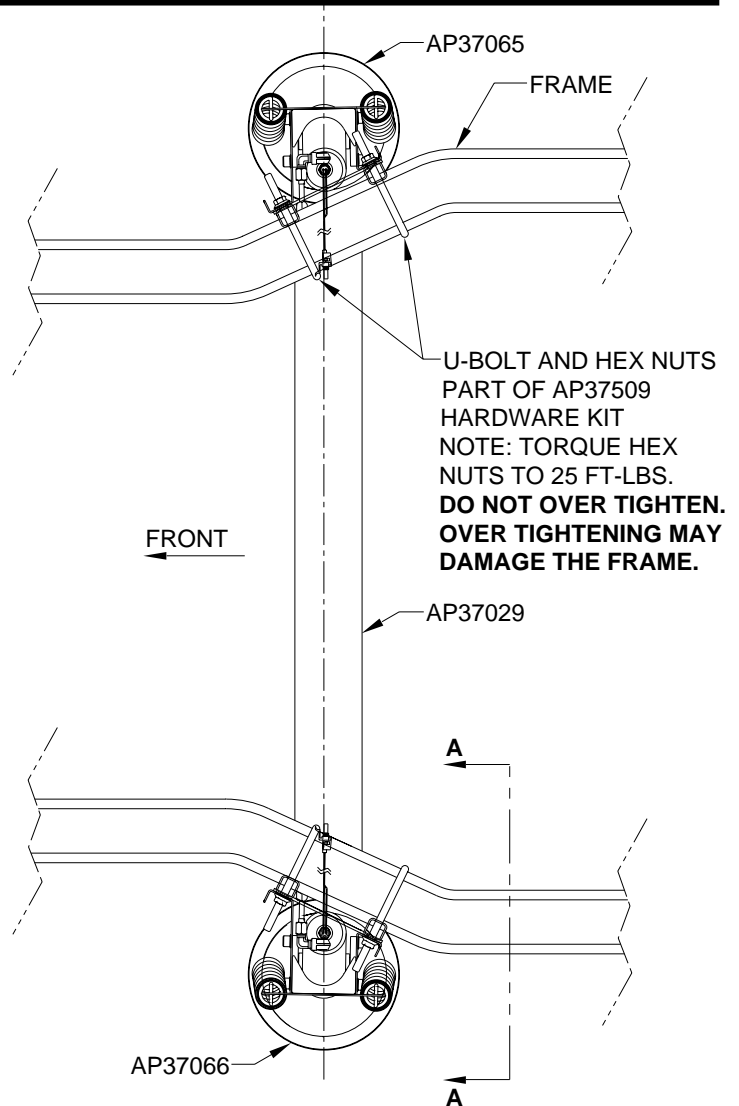
M.S.R.P.: See Item Price Listing

M.S.R.P.: See Item Price Listing

NOTE: SEE MI15.2008 SHEET FOR PRESSURE SWITCH MOUNTING INFORMATION (IF APPLICABLE).



*NOTE: CYLINDER IS SHOWN IN UPPER POSITION. IT MAY BE POSITIONED ONE INCH LOWER TO PROVIDE CLEARANCE.



NOTE: ALL DIMENSIONS ARE APPROXIMATE

CAUTION: Follow CAUTIONS in Operator's and Installation Manuals concerning working under vehicles.

MI25.1078
16AUG07