

FINAL CHECK OUT

**HWH 510 SERIES, COMPUTER-CONTROLLED LEVELING SYSTEM:
TOUCH PANEL CONTROLS WITH AIR DUMP**

MANUFACTURER _____ TYPE _____ DATE _____

VEHICLE ID# _____ INSPECTOR _____

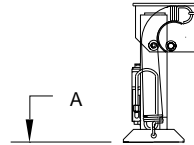
CAUTION: DO NOT OPERATE THIS SYSTEM UNLESS FULLY INSTRUCTED ON SYSTEM SAFETY PROCEDURES.

1. MOUNTING BRACKET HEIGHT:

A. MAKE SURE JACKS ARE FULLY RETRACTED.

B. PULL JACK BY HAND TO THE VERTICAL POSITION AND CHECK DIMENSION A. (SEE FIGURE 1) DIMENSION "A" SHOULD BE 3 TO 5 INCHES FOR DRY NEW VEHICLES AND 2 TO 4 INCHES FOR WET VEHICLES WITH OVER 10,000 MILES.

[COMMENTS]



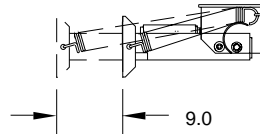
↑
FIGURE 1

OK	REWORK
<input type="checkbox"/>	<input type="checkbox"/>
<input type="checkbox"/>	<input type="checkbox"/>
<input type="checkbox"/>	<input type="checkbox"/>
<input type="checkbox"/>	<input type="checkbox"/>
<input type="checkbox"/>	<input type="checkbox"/>

2. STORED POSITION STOP:

SPACE MUST BE ALLOWED FOR THE JACK TO FULLY EXTEND IN THE STORED (HORIZONTAL) POSITION (SEE FIGURE 2) ALSO BE SURE TIRES, SPRINGS, STEERING LINKAGE, ECT., DO NOT INTERFERE IF THE JACK IS FULLY EXTENDED IN THE STORE/TRAVEL POSITION.

[COMMENTS]



← 9.0 →
FIGURE 2

3. HOSE AND ELECTRICAL WIRING:

CHECK HOSES AND WIRING FOR KINKING OR RUBBING ON SHARP OBJECTS WHEN JACKS ARE OPERATED. ALSO CHECK THE ROUTING OF HOSES AND WIRING TO INSURE THEY WILL NOT BE HEATED TO OVER 200 DEG. F.

[COMMENTS]

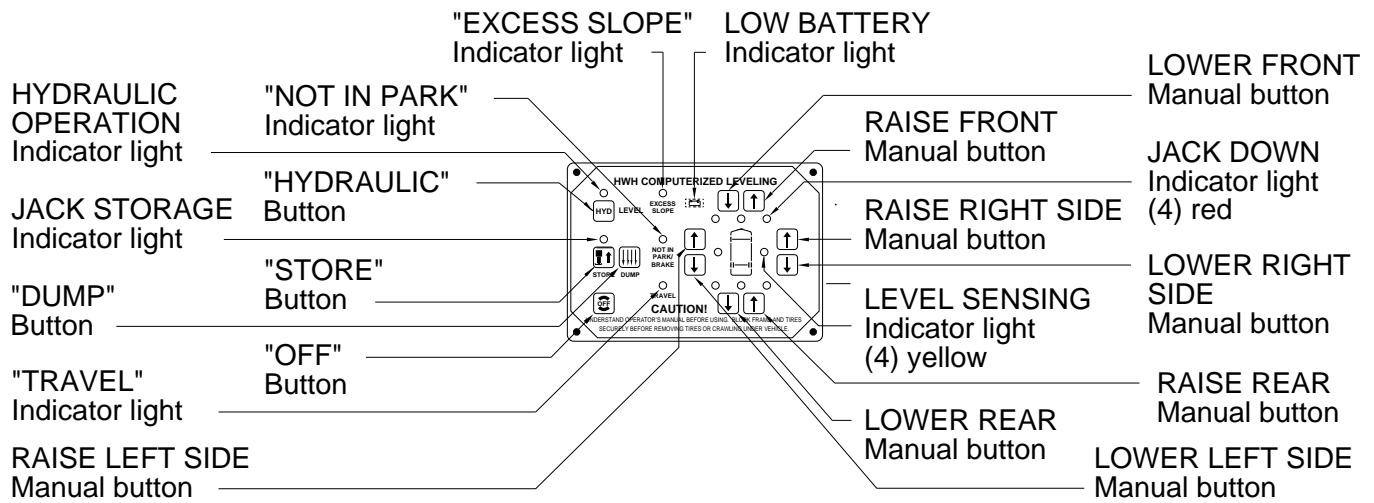
NOTE: CHECK OIL LEVEL IN RESERVOIR BEFORE PROCEEDING. OIL SHOULD BE WITHIN ONE INCH OF THE TOP OF THE RESERVOIR. JACKS MUST BE FULLY RETRACTED TO CHECK THE HYDRAULIC OIL LEVEL.

4. POWER CONNECTION:

TURN IGNITION SWITCH TO "OFF". PRESS THE "I" BUTTON. (HYDRAULIC START) NO LIGHTS ON THE PANEL SHOULD BE LIT.

[COMMENTS]

<input type="checkbox"/>	<input type="checkbox"/>
--------------------------	--------------------------



5. HYDRAULIC START "HYD" BUTTON:

PLACE TRANSMISSION IN THE RECOMMENDED POSITION FOR PARKING THE VEHICLE, AND SET THE PARKING BRAKE. TURN THE IGNITION SWITCH TO "ACC" OR "ON". PRESS THE "HYD" BUTTON ONE TIME. THE "HYDRAULIC OPERATION" INDICATOR LIGHT SHOULD COME ON AND GLOW STEADY.

[COMMENTS]

OK REWORK

6. "NOT IN PARK/BRAKE" CHECK:

WITH THE "HYDRAULIC OPERATION" INDICATOR LIGHT ON, RELEASE THE PARKING BRAKE AND CONFIRM THAT THE "NOT IN PARK/BRAKE" INDICATOR LIGHT COMES ON. RESET THE PARKING BRAKE. THE "NOT IN PARK/BRAKE" LIGHT SHOULD GO OUT.

[COMMENTS]

7. VERTICAL OPERATION:

PRESS THE "HYD" BUTTON A SECOND TIME. THE "HYDRAULIC OPERATION" INDICATOR LIGHT SHOULD START TO FLASH. THE PUMP SHOULD COME ON AND ALL FOUR JACKS SHOULD SWING VERTICAL. THE FOUR "JACKS DOWN" LIGHTS AS WELL AS THE MASTER "JACKS DOWN" LIGHT ON THE DASH SHOULD COME ON. THE PUMP SHOULD STOP WITH IN 3-5 SECONDS AFTER ALL THE WARNING LIGHTS ARE ON. THE "HYDRAULIC OPERATION" INDICATOR LIGHT SHOULD NOW GLOW STEADY. CHECK IF ALL JACKS ARE PERPENDICULAR TO THE FLOOR OF THE VEHICLE. IF TILTED THEY NEED ADJUSTMENT.

[COMMENTS]

8. JACK OPERATION:

USE "RAISE" AND "LOWER" BUTTONS ON THE RIGHT SIDE OF THE PANEL TO CHECK JACK OPERATION. THE JACKS OPERATE IN PAIRS, FRONT JACKS, REAR JACKS, RIGHT SIDE JACKS OR LEFT SIDE JACKS. PUSH "RAISE RIGHT SIDE" MANUAL BUTTON. CONTINUE TO PUSH THE BUTTON UNTIL THE TWO RIGHT SIDE JACKS EXTEND AND RAISE THE COACH APPROXIMATELY THREE INCHES. ONLY THE TWO RIGHT SIDE JACKS SHOULD EXTEND, NOTHING ELSE SHOULD HAPPEN. PUSH THE "LOWER RIGHT SIDE" MANUAL BUTTON. THIS SHOULD RETRACT THE TWO RIGHT SIDE JACKS. PUSH THIS BUTTON UNTIL BOTH JACKS ARE RETRACTED (5 OR 10 SECONDS). THE JACKS SHOULD STILL BE VERTICAL. NOW REPEAT THE TEST WITH THE OTHER THREE SETS OF "RAISE" AND "LOWER" BUTTONS. REMEMBER THE JACKS OPERATE IN PAIRS CHECK THAT ONLY THE CORRESPONDING JACKS EXTEND OR RETRACT WHEN BUTTON IS PUSHED.

[COMMENTS]

OK REWORK

9. AIR DUMP OPERATION:

WITH THE SYSTEM ON AND THE JACKS IN THE VERTICAL POSITION, PUSH THE "DUMP" BUTTON. WHILE PUSHING THE "DUMP" BUTTON, THE DUMP SOLENOIDS WILL OPEN AND RELEASE AIR FROM THE AIR BAGS. WHEN THE BUTTON IS RELEASED, THE DUMP SOLENOID WILL CLOSE.

NOTE: THE MANUAL "DUMP" BUTTON WILL OPERATE WITH THE SYSTEM OFF AND THE IGNITION SWITCH IN THE "ACC" OR "ON", OR IF THE SYSTEM IS ON, THE JACKS MUST BE VERTICAL.

[COMMENTS]

10. STORE OPERATION:

PUSH THE "OFF" BUTTON. PUSH THE "HYD" ON BUTTON ONE TIME THEN PUSH THE "STORE" BUTTON. ALL FOUR JACKS SHOULD SWING TOWARD HORIZONTAL. THE FOUR RED "JACKS DOWN" LIGHTS AND THE MASTER "JACKS DOWN" LIGHT ON THE DASH SHOULD GO OUT. THE ENGINE MAY HAVE TO RUN TO FILL THE AIR BAGS TO CHECK THIS OPERATION. THE "TRAVEL PERMISSIBLE" LIGHT SHOULD BE ON WHEN ALL "JACKS DOWN" LIGHTS ARE OUT.

[COMMENTS]

11. HYDRAULIC OIL LEVEL:

CHECK RESERVOIR OIL LEVEL. OIL SHOULD BE WITHIN ONE INCH OF THE TOP OF THE TANK. IF OIL IS LOW DO NOT CONTINUE UNTIL THE TANK HAS BEEN FILLED. POWER UNIT COULD BE DAMAGED. THE JACKS MUST BE FULLY RETRACTED TO CHECK HYDRAULIC OIL LEVEL.

[COMMENTS]

12. AUTO LEVELING-1ST STAGE:

THE ENGINE MUST BE OFF TO LEVEL THE VEHICLE. TURN THE IGNITION SWITCH TO "ON" OR "ACC". POSITION THE VEHICLE SO ONE OR MORE YELLOW LEVELING LIGHTS ARE ON. PUSH THE "I" BUTTON ONCE TO TURN THE SYSTEM ON. PUSH THE "I" BUTTON A SECOND TIME TO MOVE THE JACKS TO THE VERTICAL POSITION. ALL OF THE RED WARNING LIGHTS SHOULD BE ON. THESE OPERATIONS WERE CHECKED IN STEPS 4 THROUGH 7 AND SHOULD BE OK.

[COMMENTS]

OK REWORK

13. AUTO LEVELLING -2ND STAGE:

PUSH THE "HYD" BUTTON AGAIN (3RD) TIME.

A. THE "HYDRAULIC OPERATION" INDICATOR LIGHT WILL START TO BLINK.

B. THE AIR WILL DUMP FROM THE SUSPENSION FOR APPROXIMATELY 30 SECONDS BEFORE LEVELING STARTS.

C. TWO OR THREE JACKS AT A TIME WILL EXTEND CORRESPONDING TO ANY YELLOW LIGHT WHICH IS LIT. THE PUMP WILL CYCLE ON AND OFF AS REQUIRED. THERE IS A SHORT DELAY BETWEEN OPERATION OF THE JACKS. THIS SHOULD CONTINUE UNTIL ALL YELLOW LIGHTS ARE OUT OR UNTIL ONE JACK HAS REACHED FULL STROKE.

D. THE PUMP WILL COME BACK ON AND RUN UNDER LOW PRESSURE. DURING THIS TIME ANY JACKS NOT ALREADY TOUCHING THE GROUND WILL BE EXTENDED TO STABILIZE THE VEHICLE. NOTE: THE JACKS SHOULD LIFT THE VEHICLE AT LEAST 1/2 INCH, BUT SHOULD NOT LIFT THE VEHICLE MORE THAN 1 INCH.

E. THE "HYDRAULIC OPERATION" LIGHT WILL GO OUT. THE PANEL WILL TURN OFF.

[COMMENTS]

14. SENSING UNIT:

AFTER AUTO LEVELING-2ND STAGE, ALL YELLOW LEVELING LIGHTS SHOULD BE OUT. CHECK WITH A LEVEL TO SEE THAT THE VEHICLE IS LEVEL. IF IT IS, THE SENSING UNIT IS PROPERLY ADJUSTED.

[COMMENTS]

15. AUTOMATIC RETRACT (STORE):

START THE VEHICLE ENGINE AND ALLOW THE AIR BAGS TO REINFLATE. PUSH THE "HYD" BUTTON. THE "HYDRAULIC OPERATION" INDICATOR LIGHT WILL GLOW STEADY. PUSH THE "STORE" BUTTON ONE TIME.

A. THE "JACK STORAGE" INDICATOR LIGHT WILL START TO FLASH.

B. AS EACH JACK CLEARS THE GROUND, IT SHOULD SWING HORIZONTAL AND CONTINUE TO RETRACT.

C. THE RED WARNING LIGHTS SHOULD BE OUT.

D. THE GREEN "TRAVEL PERMISSIBLE" INDICATOR LIGHT SHOULD COME ON WHEN THE RED WARNING LIGHTS ARE OUT.

E. THE SYSTEM WILL AUTOMATICALLY SHUT DOWN SIX MINUTES AFTER ALL THE JACKS ARE RETRACTED. ALL LIGHTS ON THE TOUCH PANEL SHOULD NOW BE OUT EXCEPT THE "TRAVEL" LIGHT. CHECK THAT ALL JACKS ARE IN THE HORIZONTAL POSITION AND FULLY RETRACTED.

[COMMENTS]