

FINAL CHECK OUT

**HWH LEVER-CONTROLLED LEVELING SYSTEM WITH FOUR LEVERS
INCLUDES OPTIONAL AIR DUMP**

MANUFACTURER _____ TYPE _____ DATE _____

VEHICLE ID# _____ INSPECTOR _____

CAUTION: DO NOT OPERATE THIS SYSTEM UNLESS FULLY INSTRUCTED ON SYSTEM SAFETY PROCEDURES.

1. MOUNTING BRACKET HEIGHT:

A. MAKE SURE JACKS ARE FULLY RETRACTED.

B. PULL JACK BY HAND TO THE VERTICAL POSITION AND CHECK DIMENSION A. (SEE FIGURE 1) DIMENSION "A" SHOULD BE 3 TO 5 INCHES FOR DRY NEW VEHICLES AND 2 TO 4 INCHES FOR WET VEHICLES WITH OVER 10,000 MILES.

[COMMENTS]

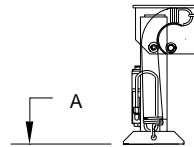


FIGURE 1

OK	REWORK
<input type="checkbox"/>	<input type="checkbox"/>
<input type="checkbox"/>	<input type="checkbox"/>
<input type="checkbox"/>	<input type="checkbox"/>
<input type="checkbox"/>	<input type="checkbox"/>
<input type="checkbox"/>	<input type="checkbox"/>

2. STORED POSITION STOP:

SPACE MUST BE ALLOWED FOR THE JACK TO FULLY EXTEND IN THE STORED (HORIZONTAL) POSITION (SEE FIGURE 2) ALSO BE SURE TIRES, SPRINGS, STEERING LINKAGE, ETC., DO NOT INTERFERE IF THE JACK IS FULLY EXTENDED IN THE STORE/TRAVEL POSITION.

[COMMENTS]

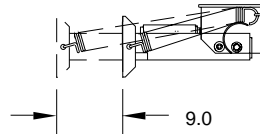


FIGURE 2

3. HOSE AND ELECTRICAL WIRING:

CHECK HOSES AND WIRING FOR KINKING OR RUBBING ON SHARP OBJECTS WHEN JACKS ARE OPERATED. ALSO CHECK THE ROUTING OF HOSES AND WIRING TO INSURE THEY WILL NOT BE EXPOSED TO TEMPERATURES OVER 180 DEG F.

[COMMENTS]

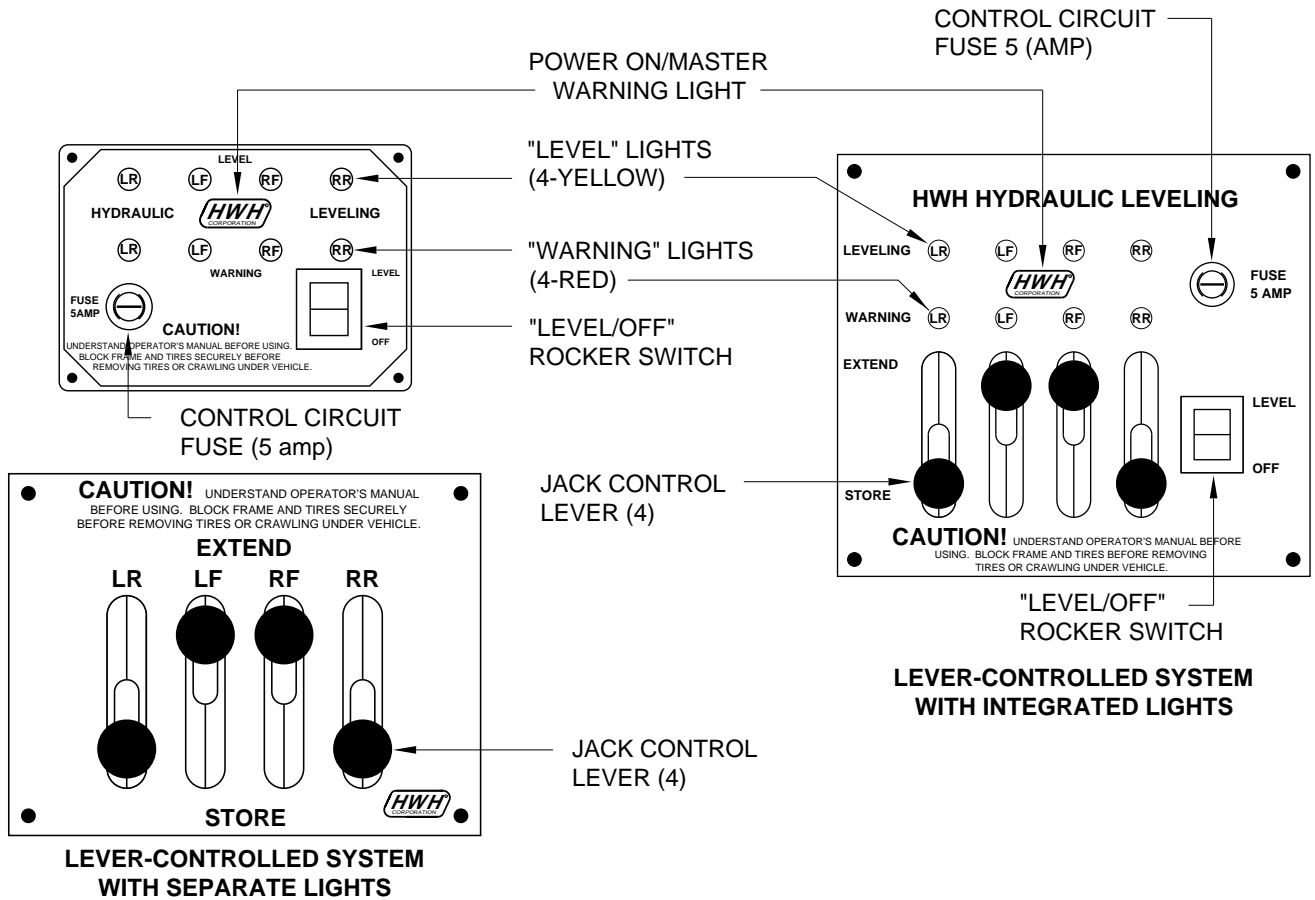
NOTE: CHECK OIL LEVEL IN RESERVOIR BEFORE PROCEEDING. OIL SHOULD BE WITHIN ONE INCH OF THE TOP OF THE RESERVOIR. JACKS MUST BE FULLY RETRACTED TO CHECK THE HYDRAULIC OIL LEVEL.

4. POWER CONNECTION:

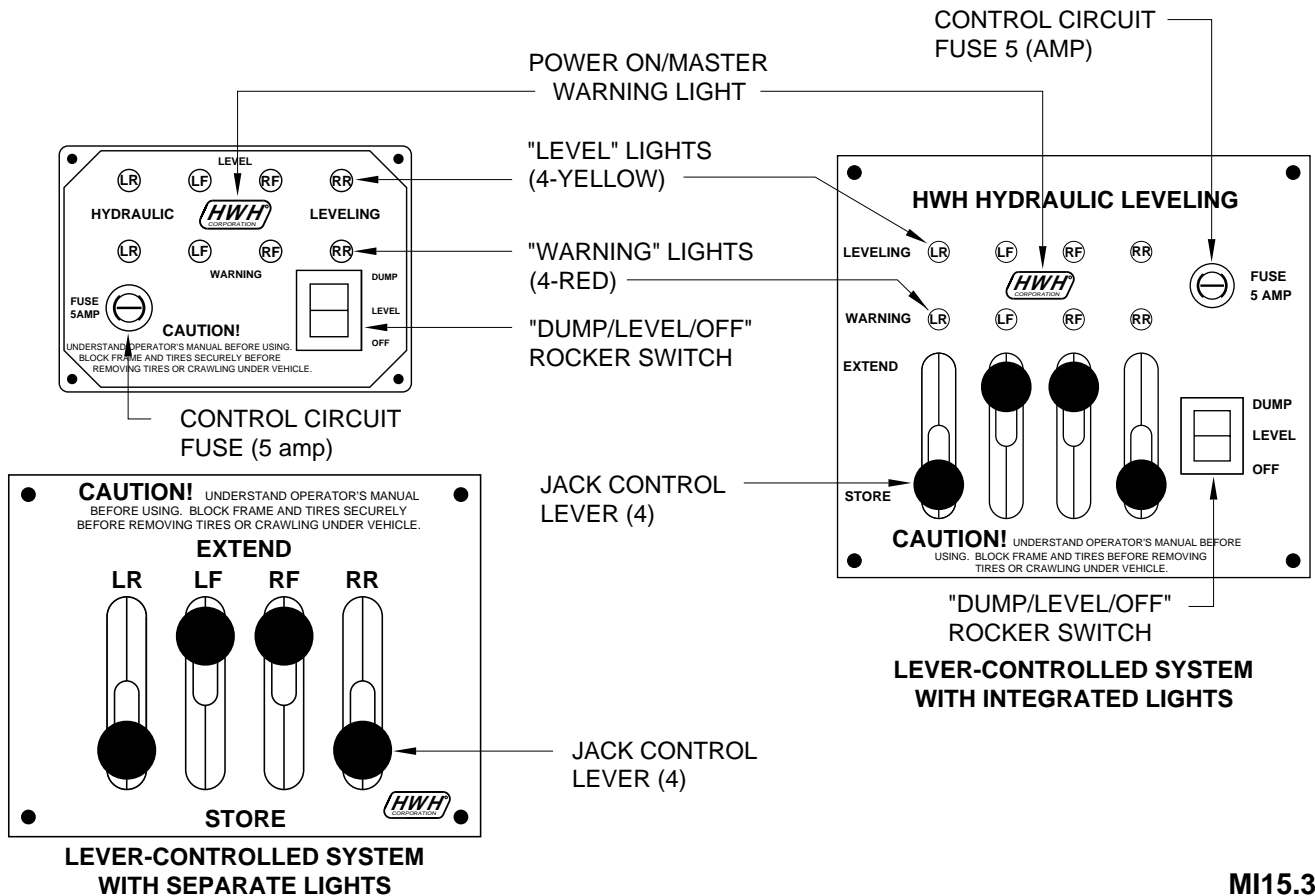
TURN THE IGNITION SWITCH TO THE OFF POSITION. TURN THE SWITCH ON LEVELING SYSTEM PANEL TO ON. MOVE LEVERS TO EXTEND POSITION. NO LIGHTS SHOULD BE ON, NOR SHOULD THE PUMP RUN UNDER THESE CONDITIONS.

[COMMENTS]

CONTROL IDENTIFICATION



WITH OPTIONAL AIR DUMP



OK REWORK

5. PLUMBING AND WIRING CHECK:

TURN IGNITION SWITCH TO THE "ACC" POSITION.

A. PUSH THE ROCKER SWITCH TO "LEVEL". THE POWER ON/WARNING LIGHT ("HWH") WILL COME ON. ONE OR TWO YELLOW LEVELING INDICATOR LIGHTS CAN COME ON. (NEVER THREE) IF THE VEHICLE IS LEVEL NO YELLOW LIGHTS WILL COME ON.

NOTE: THE "HWH" LIGHT IS ALSO A MASTER "JACKS DOWN" WARNING LIGHT WHEN THE ROCKER SWITCH IS OFF. THE FOUR INDIVIDUAL RED WARNING LIGHTS ONLY COME ON IF THE ROCKER SWITCH IS ON.

B: MOVE THE RIGHT REAR LEVER TO EXTEND POSITION UNTIL THE JACK RAISES THE VEHICLE ABOUT 2 INCHES. RIGHT REAR RED WARNING LIGHT AND MASTER WARNING LIGHT ON THE DASH SHOULD NOW BE ON. RETRACT THE RIGHT REAR JACK AND REPEAT THIS CHECK WITH THE OTHER THREE JACKS.

NOTE: BE SURE THE LIGHT WHICH COMES ON CORRESPONDS WITH THE LEVER BEING OPERATED. BE SURE THE LEVER BEING PUSHED TO CORRESPONDS TO THE JACK THAT IS EXTENDED.

[COMMENTS]

6. MOUNTING BRACKET CHECK:

CHECK ALL MOUNTING BRACKETS AND WELDS FOR PHYSICAL DAMAGE.

[COMMENTS]

7. VERTICAL ADJUSTMENT OF JACKS:

MOVE EACH LEVER TO EXTEND UNTIL ALL JACKS ARE VERTICAL, BUT NOT TOUCHING THE GROUND. CHECK AND SEE IF ALL THE JACKS ARE PERPENDICULAR TO THE FLOOR OF THE VEHICLE. IF TILTED THEY NEED ADJUSTMENT.

[COMMENTS]

8. SENSING UNIT:

IF A YELLOW LIGHT IS ON, EXTEND THE CORRESPONDING JACK UNTIL THE LIGHT IS OUT. WHEN ALL YELLOW LIGHTS ARE OUT CHECK WITH A HAND LEVEL TO SEE IF THE VEHICLE IS LEVEL.

[COMMENTS]

9. JACK RETRACTION:

POSITION ALL LEVERS IN THE RETRACT POSITION. CHECK TO SEE THAT EACH JACK IS FULLY RETRACTED AND IN THE STORED POSITION.

[COMMENTS]

OK

REWORK

10. HYDRAULIC OIL LEVEL:

CHECK RESERVOIR OIL LEVEL. OIL SHOULD BE WITHIN ONE INCH OF THE TOP OF THE TANK. IF OIL IS LOW DO NOT CONTINUE UNTIL THE TANK HAS BEEN FILLED. POWER UNIT COULD BE DAMAGED. THE JACKS MUST BE FULLY RETRACTED TO CHECK HYDRAULIC OIL LEVEL.

[COMMENTS]

11. AIR DUMP SYSTEM (OPTIONAL):

VEHICLE MUST BE OFF. TURN IGNITION SWITCH TO "ACC" OR "ON". PUSH THE ROCKER SWITCH TO THE MOMENTARY "DUMP" POSITION. AIR SHOULD DUMP FROM AIR BAGS WHILE THE ROCKER SWITCH IS HELD TO THE "DUMP" POSITION. WHEN THE SWITCH IS RELEASED THE AIR SHOULD STOP DUMPING.

NOTE: VEHICLE ENGINE MUST BE RUNNING TO REINFLATE BAGS.

[COMMENTS]